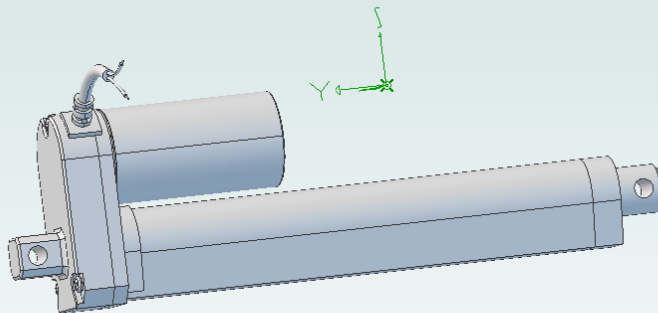




**MOTION TECHNOLOGIES
PTY LTD**

LINEAR ELECTRIC ACTUATOR LEA3



DC motor up to 1000N

COMPACT

RELIABLE

QUIET

EFFICIENT

Actuator LEA3



Features

- ◆ LEA3 features a compact design which is suitable for various applications that require limited installation space, such as window opener and adjustable car driver seat. A quiet version, LEA3Q, is available for applications that require compact size and quiet operation.
- ◆ Main applications : Industrial, homecare, furniture
- ◆ Input voltage : 24V DC / 12V DC
- ◆ Max. load : 1200N (push/pull)
- ◆ Max. current : 3.5 A @ 12V DC
- ◆ Max. speed : 44 mm/sec @ no load
- ◆ Stroke : 50~300 mm (other strokes are available)
- ◆ Duty cycle : 25% or 1 min continuous operation in 4 min.
- ◆ IP protection level : IP65
- ◆ Color : Aluminum grey
- ◆ Certified : EN 55014-1
EN55014-2
- ◆ Noise level : $\leq 70\text{dB}$ (Normal version) / $\leq 55\text{dB}$ (Quiet version)
- ◆ Preset limit switches

* Optional Potentiometer feedback available.

Accessories:



Tube Clamp

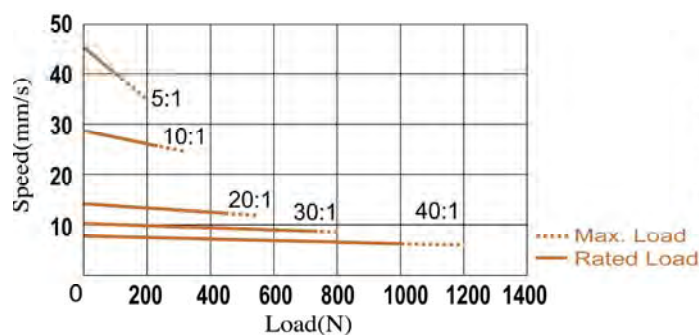


Rear Clevis Mounting Bracket (2 type)

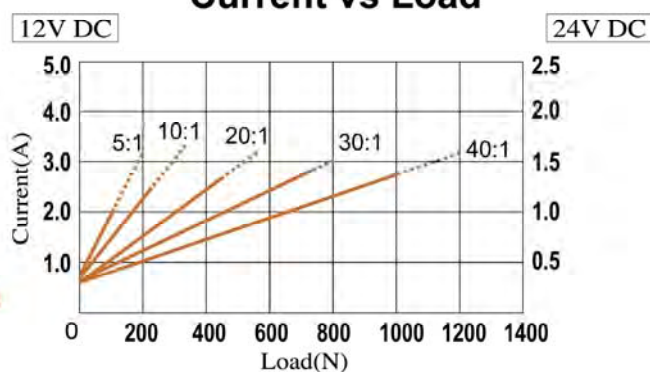
Performance Data

◆ LEA3

Speed vs Load



Current vs Load



Model No.	Push/Pull Max. (N)	Speed (mm/s)		Current (A)			
		No load	Full load	No load		Full load	
				12V	24V	12V	24V
LEA3-XX-05-XXX	150	43.9	40.0	0.8	0.4	2.0	1.0
LEA3-XX-10-XXX	250	27.6	26.0	0.8	0.4	2.4	1.2
LEA3-XX-20-XXX	500	14.6	13.5	0.8	0.4	2.6	1.3
LEA3-XX-30-XXX	800	9.5	9.1	0.8	0.4	2.9	1.5
LEA3-XX-40-XXX	1000	7.0	6.5	0.8	0.4	2.8	1.4

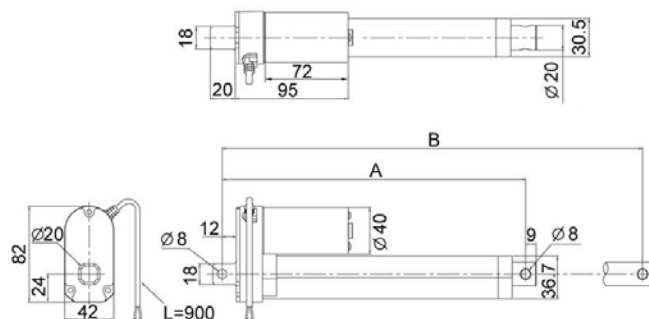
Dimensions

Standard Type

Stroke	50	100	150	200	250	300
A	158	209	260	311	362	413
B	208	309	410	511	612	713
A	199	250	301	352	403	454
B	249	350	451	552	653	754

Unit : mm

A:Retracted Length
B:Extended Length
Stroke=B-A

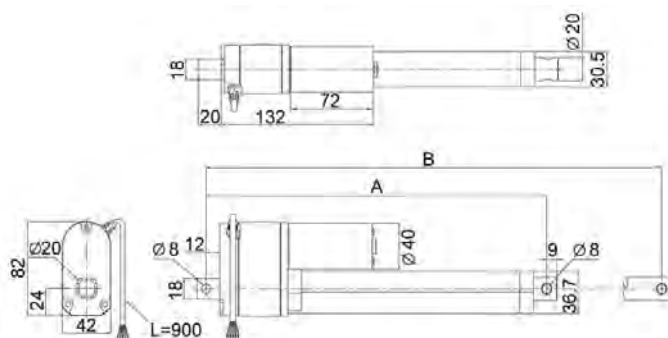


POT Type

Stroke	50	100	150	200	250	300
A	195	246	297	348	399	450
B	245	346	447	548	649	750
A	236	287	338	389	440	491
B	286	387	488	589	690	791

Unit : mm

A:Retracted Length
B:Extended Length
Stroke=B-A

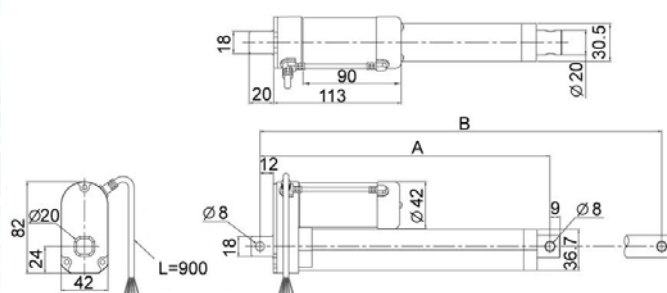


Hall Sensor Type

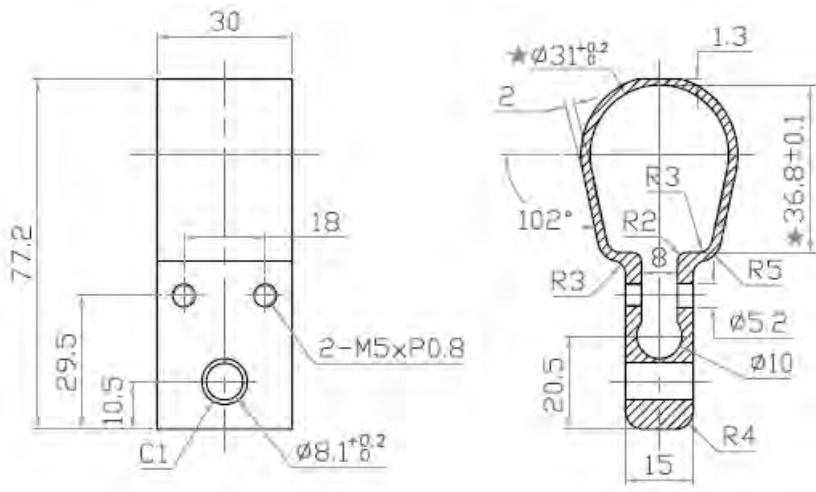
Stroke	50	100	150	200	250	300
A	158	209	260	311	362	413
B	208	309	410	511	612	713
A	199	250	301	352	403	454
B	249	350	451	552	653	754

Unit : mm

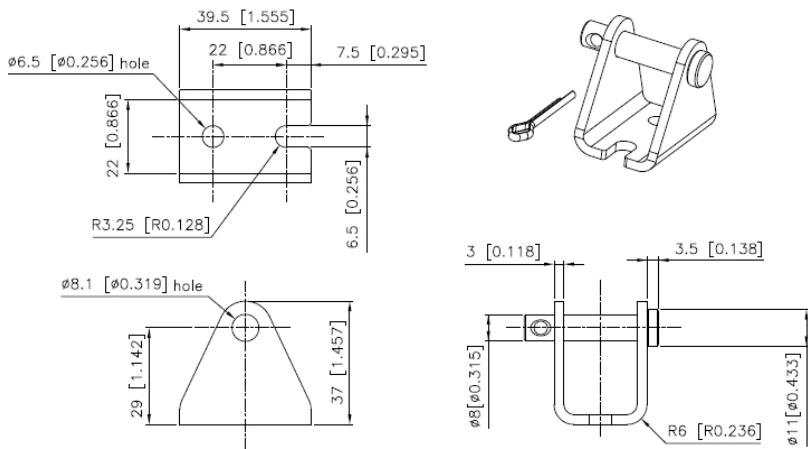
A:Retracted Length
B:Extended Length
Stroke=B-A



Tube Clamp, P/N LEA3CLAMP



Rear Clevis Bracket Short, P/N LEA3FOOT1



Rear Clevis Bracket Long, P/N LEA3FOOT2

Drawing available on request



Ordering Key: LEA3 -

	<div></div>	<div></div>	<div></div>	<div></div>	<div></div>	<div></div>
Input Voltage						
12: 12V DC						
24: 24V DC						
Gear Ratio						
05: 5:1						
10: 10:1						
20: 20:1						
30: 30:1						
40: 40:1						
Screw Thread						
A = Acme						
Stroke						
050: 50mm						
100: 100mm						
150: 150mm						
200: 200mm						
250: 250mm						
300: 300mm						
Option						
IP65: Sealed IP65 standard						
Mounting brackets: Order separately						
H: Integral hall sensors						
POT: Potentiometer kit included						
Custom Code						
If required						

5`gc`5 j Uj UW`Y

'IJ2' SERIES INDUSTRIAL ACTUATOR

STANDARD FEATURES

- * Size 6 phase AC or 12/24V DC motors
- * Economical
- * Up to 540kg dynamic capacity
- * Self aligning rod end
- * Weather resistant TENV motors, approx IP54
- * Acetal acme screw nut
- * Individually adjustable top and bottom limit switches
- * Strokes to 610mm
- * Quiet operation
- * 1200kg static capacity
- * In-built capacitor for AC motors
- * Corrosion resistant powder coated
- * Self-locking acme screw
- * Precision ball thrust bearings
- * 20:1 Gear ratio
- * Fully repairable

OPTIONAL FEATURES

- * Bellows boot rod protection
- * Double safety nut on screw shaft
- * Bronze acme screw nut
- * Travelling nut design
- * Tube mounting hardware (2 styles)
- * Optional screw thread leads
- * Screw jack baseplate mount
- * Silicone sealed motors
- * Keyed anti-rotating rod

APPLICATIONS

Agricultural Equipment:

Silage shutes, conveyors, transmission shifter, tractor accessory lifts, belt tensioner, spray boom operator, automatic gate opener

Industrial Equipment:

Belt speed and tension controls, flue and draft controls, table lifts, hatch covers, ventilator controls, valve actuators, window operators, clamping, damper controls, variable pump controllers, fluid coupling controllers

Medical Equipment:

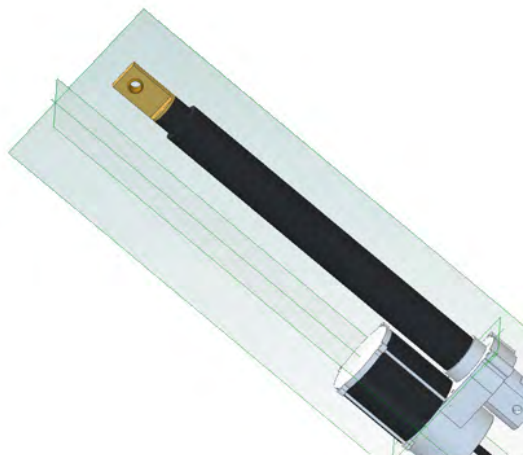
Hospital beds, dental chairs, examination tables, invalid lifts, patient hand lifters

Materials Handling Equipment:

Container tippers, dump shute doors, elevators, barrel lift, conveyor gate diverter

Office Equipment:

Computer terminal desks, chairs, drafting tables



Other Motion Tech Products



Precision in the Extreme



Distributors for Australia & New Zealand

MOTION TECHNOLOGIES PTY LTD

24/22-30 Northumberland Road
Caringbah NSW 2229 Australia

Phone: (02) 9524 4782

Fax: (02) 9525 3878

sales@motiontech.com.au

www.motiontech.com.au

© 20/03/19