

HARDWARE AND FASTENERS

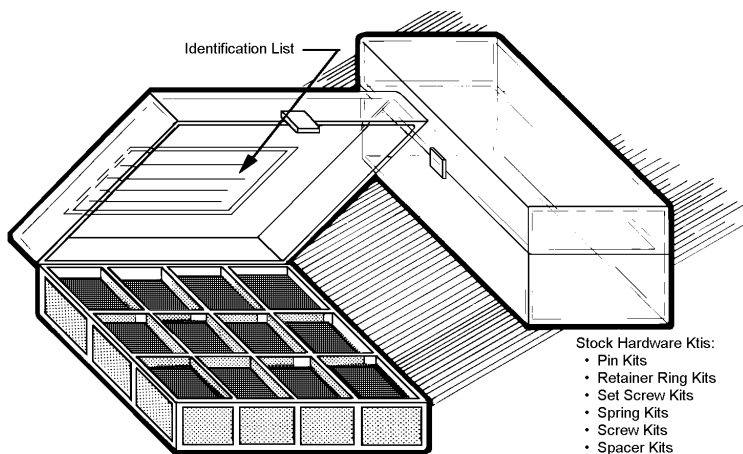
Table of Contents

HARDWARE KIT	
Plastic	F 2
PARTS BOXES	
Natural Wood	F 3
Plastic	F 3
SCREW HEAD TECHNICAL DATA	F 4
MACHINE SCREWS	
Stainless Steel, Flat, Round and Fillister Head	F 5 - F 7
Stainless Steel, Flat, Round Fillister Head Kit	F 2
Stainless Steel, Binding, Socket Head, and Button	F 7
Long-Lok® and Nyloc® Flat, Round and Fillister Head	F 8 - F 9
Long-Lok® and Nyloc® Binding and Socket Head	F 8 - 9
Nylon, Flat, Round and Fillister Head	F 10 - F 11
Nylon, Pan and Socket Cap	F 10 - F 11
INTEGRAL SEAL SCREWS	
Slotted Pan Head	F 12 - F 13
SET SCREWS	
Slotted and Hex Head, Stainless Steel and Nylon	F 14
Set Screw Kits - Slotted and Hex Head, Stainless Steel and Nylon	F 2
Ball Button	F 15
Brass Soft Tip, Hex Socket	F 16
Silver Solder Tip, Slotted Head and Hex Socket	F 17
Set Screw Kits - Silver Solder Tip, Slotted Head and Hex Socket	F 17
Soft Tip, Slotted Head and Hex Socket	F 18 - F 20
Set Screw Kits	F 19
SHOULDER SCREWS	
Stainless Steel, Slotted Head	F 21 - F 22
Stainless Steel, Hex Socket Head	F 23 - F 24
PRECISION CAPTIVE SCREWS	
Slotted, Hex Socket and Knurled Head, Stainless Steel	F 25
PRECISION JIG BUTTONS	
Stainless Steel	F 26
THUMB SCREWS	
Plastic Head, Knurled	F 27 - F 28
Stainless Steel, Knurled	F 29 - F 31
Stainless Steel, Knurled, Socket Head	F 32 - F 33
THUMB NUTS	
Stainless Steel, Knurled	F 34 - F 35
THREADED STUDS	
Stainless Steel, Double Ended	F 36 - F 37
HEX NUTS	
Stainless Steel and Molded Nylon	F 38
Hex Nut Kits	F 38
WASHERS	
Nylon and Stainless Steel	F 39 - F 40
LOCK WASHERS	
Stainless Steel, External and Internal Tooth	F 41
Lock Washer Kits	F 41
THRUST WASHERS AND DISKS	
Stainless Steel, Plastic, Bronze and Tool Steel	F 42
SWIVEL WASHERS	
Stainless Steel, Male and Female	F 43
Belleville Washers	F 44
Curved Washers	F 44
THREAD INSERTS	
Stainless Steel, Free Running and Locking	F 45
Thread Insert Kits	F 45
THREAD INSERT TAPS	
Bottoming and Plug	F 46
THREAD INSERT TOOLS	
Production Tool and Prototype	F 46
TANG BREAK-OFF TOOL	F 47
PINS	
Tapper, Stainless Steel	F 48
Grooved, Stainless Steel	F 49
Roller or Spring Pins, Stainless Steel	F 49
Spiral Pins, Stainless Steel	F 50
Assorted Pins Kit	F 50
Clevis Pins, Stainless Steel	F 51
Cotter Pins, Stainless Steel	F 51
Cotter Pins Kit	F 51
DOWEL PINS	
Soft Pins, Stainless Steel	F 52
Dowel Pin Kit	F 52
Hardened Pins, Stainless Steel	F 53
TAPER AND DOWEL PIN REAMERS	
Spiral and Straight, High Speed Steel	F 54
HEX WRENCH	
Steel Alloy	F 55
Hex Wrench Kit	F 55
MISCELLANEOUS ITEMS	
Grease, Oil, Inspection Mirrors, Screw Drivers, Plastic Hammers, Scale, Hex Wrenches, Tweezers, Loupes, Cable Cutters	
Adhesives, Liquid Pin, Solvent, Lubricants	F 56 - F 57
RETAINER RINGS	
External Lug Design, Stainless Steel, Copper Plated	F 58
Assorted Retainer Rings Kit	F 58
External Snap On Design	F 59
External Power Grip Design	F 59
External Bowed Snap On Design	F 60
External, Carbon Steel and Stainless Steel	F 60
Internal and External, High Carbon Spring Steel	F 61 - F 63
Retainer Ring Pliers	F 58 - F 59
Bearings, Internal Push In Design	F 64
Internal Lug Design	F 64
BEARING PRE-LOAD SPRINGS	F 65
SPACERS	
Inner and Outer Race Shim	F 66
Shaft Spacers	F 67 - F 68
Assorted Inner Race Shaft Spacers Kit	F 68
BEARING SPACERS	F 69
Bearing Spacers Kit	F 69
BALLS	
Hardened Steel, Plastic, Brass and Titanium	F 70
SPRINGS	
Compression	F 71
Compression Springs Kit	F 71
Experimental	F 72
Extension	F 72
Torsion	F 73
Anti-backlash	F 73
Anti-backlash Torsion	F 74
Spring Posts	F 74
CHASSIS HANDLES	
Tap and stud styles	F 75

HARDWARE KITS

MATERIAL

PLASTIC



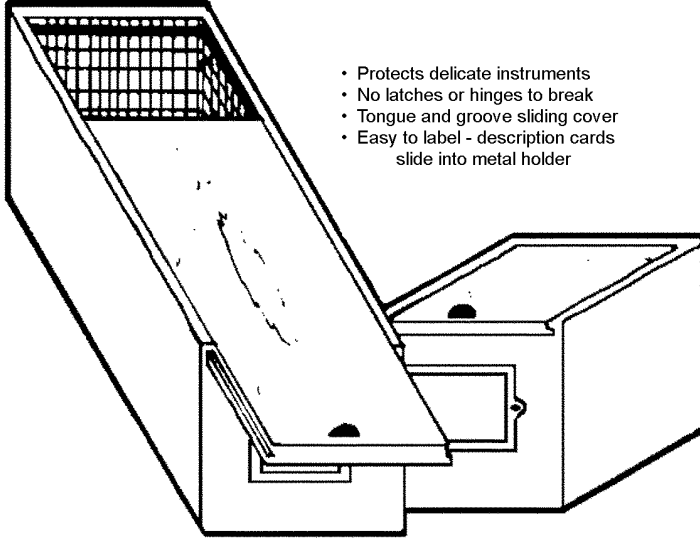
STOCK NUMBER	DESCRIPTION OF KIT CONTENTS	NO. OF PARTS
KIT-CP1	Cotter Pins - Stainless Steel - 3/8" to 2" Long	280
KIT-CP3	Taper Pins - Stainless Steel - #9/0 to #2/0 To 1-1/4" Long	240
KIT-CP5	Pins - Taper, Roll & Dowel - Stainless Steel - .047 To .125 Diameter	530
KIT-D11	Dowel Pins - 303 Stainless Steel - 1/32" To 1/4" Diameter	135
KIT-D23	Dowel Pins - Hardened Stainless Steel - 1/16" To 3/8" Diameter	135
KIT-Q2	Retainer Rings - St. St. - Int. & Ext. - 1/8", 3/16" & 1/4" Shafts	450
KIT-SCA	Set Screws - Stainless Steel - Cup Point & Soft Tip #0-80 To 1/4"	256
KIT-SC2	Set Screws - Stainless Steel, Cup Point - Socket Hd. #2 To 1/4"	180
KIT-SC8-A	Set Screws - Stainless Steel, Soft Tip - Socket Hd. #2 To 10	90
KIT-SC8-B	Set Screws - Stainless Steel, Soft Tip - Socket Hd. #10 To 1/2"	60
KIT-SPR9	Compression Springs - Stain. St. - .057 To .240 Dia. To 2" Long	141
KIT-SPR10	Extension Springs - Stain. St. - 1/6" To 1/2" Dia. To 2" Long	134
KIT-SS1	Shaft Spacers - Stain.St., Inner Race - 1/8", 3/16" & 1/4" Shaft	330
KIT-SS3	Bearing Spacers - Stain.St., Outer Race - 1/8", 3/16" & 1/4" Shaft	330
KIT-ST	Belleville Spring Washers - Stainless st. 3/32" To 1/2" I.D.	160
KIT-Z2	Lockwashers - Stain. St. - Internal & External Tooth - #2 To 3/8"	480
KIT-Z5	Hex Nuts, Washers, Lock Washers - Stainless St. - #0-80 To #10-32	1800
KIT-Z6N	Flat Head Nylon Screws, Nuts & Washers #4 To 1/4"	480
KIT-Z8S	Fillister Head Screws - Stainless Steel #0-80 To #10-32	360
KIT-Z9N	Socket Head Nylon Screws, Nuts & Washers #4 To 1/4"	480
KIT-Z9S	Socket Head Cap Screws - Stainless Steel - #0-80 To #10-32	216
KIT-Z11N	Pan Head Nylon Screws, Nuts & Washers #4 To 1/4"	480
SC5-B	Set Screws - Silver Tip, Stainless Steel, Slotted Hd. #6-32 To 1/4-20	60
SC5-C	Set Screws - Silver Tip, Stainless Steel, Slotted Hd. #10 To 3/8-16	60
SC6-A	Set Screws - Silver Tip, Stainless Steel, Hex Hd. - #4-40 To #8-32	60
SC6-B	Set Screws - Silver Tip, Stainless Steel, Hex Hd. - #8-32 To 1/4-20	60
SC6-C	Set Screws - Silver Tip, Stain. Steel, Slotted Hd. - 1/4-20 To 3/8-16	60
TR-35	Hex Key Set With Plastic Case .050 To 5/32	8

Available From Stock:
 Replacement Parts
 Special Kits

PARTS BOX

MATERIAL

**SELECTED HARDWOOD - NATURAL VARNISH SEALER WITH SOFT FLOCK-LINING
THIS PRODUCT IS DISCONTINUED**



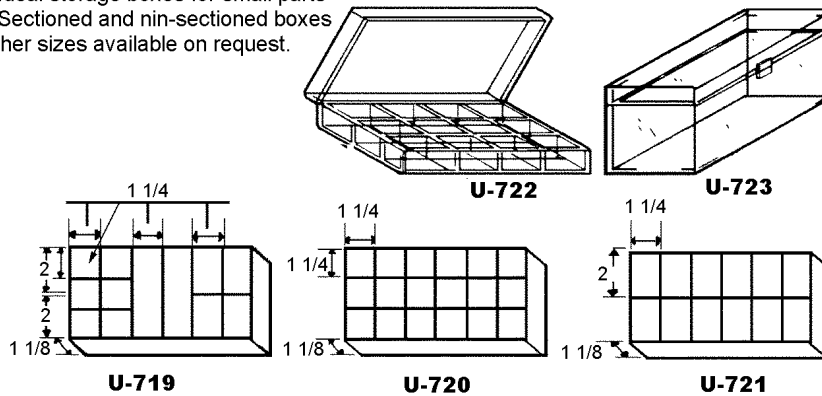
- Protects delicate instruments
- No latches or hinges to break
- Tongue and groove sliding cover
- Easy to label - description cards slide into metal holder

STOCK NO.	OUTSIDE DIMENSIONS HEIGHT x WIDTH x LENGTH	INSIDE DIMENSIONS HEIGHT x WIDTH x LENGTH
X-1	3 1/4 x 4 x 4	2 1/2 x 3 x 3
X-2	4 3/8 x 4 x 6	3 5/8 x 3 x 5
X-3	4 3/8 x 5 x 8	3 5/8 x 4 x 7
X-4	4 x 5 x 11 1/2	3 1/4 x 4 x 10 1/2
X-5	5 1/8 x 6 x 8	4 3/8 x 5 x 7
X-6	5 7/8 x 6 x 9 1/2	5 1/8 x 5 x 8 1/2
X-7	5 7/8 x 6 x 11 1/2	5 1/8 x 5 x 10 1/2
X-8	7 x 7 x 11 1/2	6 1/4 x 6 x 10 1/2

MATERIAL

PLASTIC

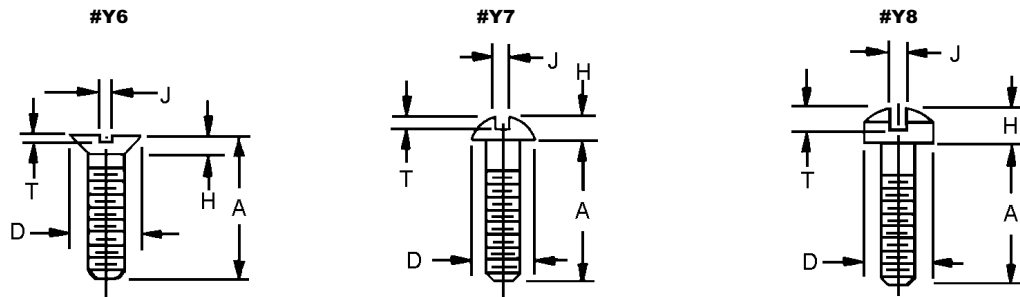
- Ideal storage boxes for small parts
 - Sectioned and nin-sectioned boxes
- Other sizes available on request.



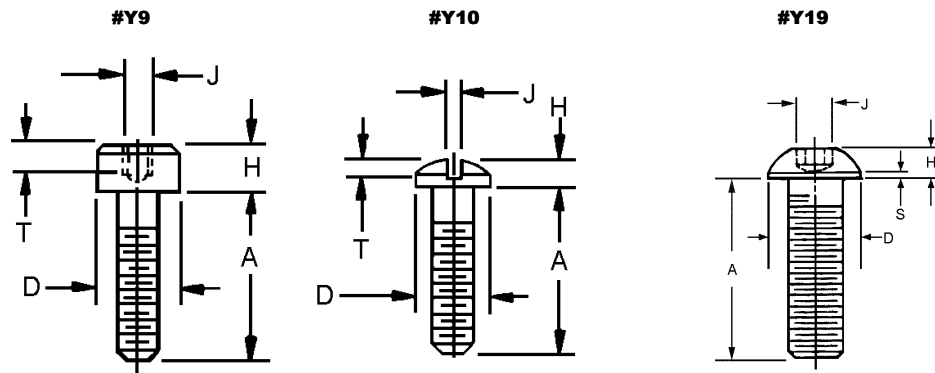
STOCK NO.	OUTSIDE DIMENSIONS HEIGHT x WIDTH x LENGTH	NO. OF COMPARTMENTS	MATERIAL
U-719	1 3/8 x 4 1/2 x 8 1/4	12	Clear Styrene
U-720		18	
U-721		12	
U-722	4 x 5 1/2 x 10	1	Tan Polypropylene
U-723	1 1/16 x 4 1/2 x 8 3/8	1	

SCREW HEAD

Technical Data



S SCREW SIZE	#Y6-FLAT HEAD 82°				#Y7-ROUND HEAD				#Y8- FILLISTER HEAD			
	D MAX	H MAX	J MAX	T MAX	D	H	J	T	D MAX	H MAX	J MAX	T MAX
#000	.064	.016	.011	.009	.062	.031	.012	.018	.059	.035	.012	.017
#00	.092	.028	.017	.014	.089	.045	.017	.026	.082	.047	.017	.022
#0	.119	.035	.023	.015	.113	.053	.023	.039	.096	.055	.023	.025
#2	.172	.051	.031	.023	.162	.069	.031	.048	.140	.083	.031	.037
#4	.225	.067	.039	.030	.211	.086	.039	.058	.183	.107	.039	.048
#6	.279	.083	.048	.038	.260	.103	.048	.068	.226	.132	.048	.060
#8	.332	.100	.054	.045	.309	.120	.054	.077	.270	.156	.054	.071
#10	.385	.116	.060	.053	.359	.137	.060	.087	.313	.180	.060	.083
1/4	.507	.153	.075	.070	.472	.175	.075	.109	.414	.237	.075	.109



SCREW SIZE	# Y9-CAP SOCKET HEAD				#Y10-BINDING HEAD				#Y19-BUTTON HEAD			
	D MAX	H MAX	J MAX	T MIN	D MAX	H MAX	J MAX	T MAX	D MAX	H MAX	S MAX	J MAX
#000	-	-	-	-	.073	.021	.012	.013	-	-	-	-
#00	-	-	-	-	.098	.028	.017	.018	-	-	-	-
#0	.096	.060	.050	.025	.126	.032	.023	.018	.144	.032	.010	.035
#2	.140	.086	5/64	.038	.181	.050	.031	.030	.164	.046	.010	.050
#4	.183	.112	3/32	.051	.235	.068	.039	.042	.213	.059	.015	1/6
#6	.226	.138	7/64	.064	.290	.087	.048	.053	.262	.073	.015	5/64
#8	.270	.164	9/64	.077	.344	.105	.054	.065	.312	.087	.015	3/32
#10	.312	.190	5/32	.090	.390	.123	.060	.077	.361	.101	.020	1/8
1/4	.375	.250	3/16	.120	.525	.165	.075	.105	.437	.132	.031	5/32

MACHINE SCREWS

THREAD	STYLE	MATERIAL
#000-120	BINDING, FLAT, ROUND AND FILLISTER	STAINLESS STEEL TYPE 18-8

HEAD STYLE				CLASS 2A THREAD	A LENGTH
BINDING STOCK NO.	FLAT STOCK NO.	ROUND STOCK NO.	FILLISTER STOCK NO.		
Y10-S000-A2	Y6-S000-A2	Y7-S000-A2	Y8-S000-A2	#000-120	1/8
Y10-S000-A3	Y6-S000-A3	Y7-S000-A3	Y8-S000-A3		3/16
Y10-S000-A4	Y6-S000-A4	Y7-S000-A4	Y8-S000-A4		1/4
Y10-S000-A5	Y6-S000-A5	Y7-S000-A5	Y8-S000-A5		5/16

THREAD	STYLE	MATERIAL
#00-96	BINDING, FLAT, ROUND AND FILLISTER	STAINLESS STEEL TYPE 18-8

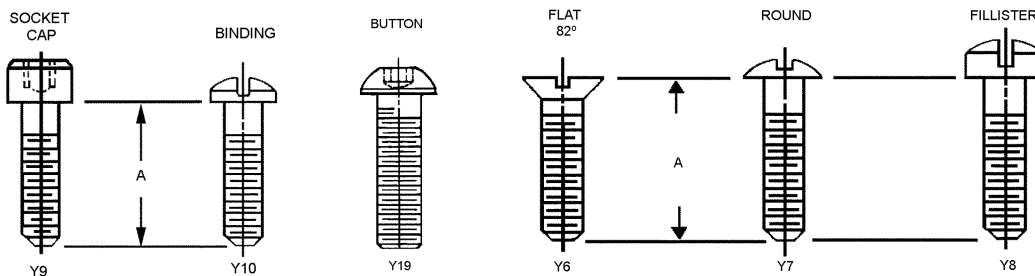
HEAD STYLE				CLASS 2A THREAD	A LENGTH
BINDING STOCK NO.	FLAT STOCK NO.	ROUND STOCK NO.	FILLISTER STOCK NO.		
Y10-S00-A2	Y6-S00-A2	Y7-S00-A2	Y8-S00-A2	#00-96	1/8
Y10-S00-A3	Y6-S00-A3	Y7-S00-A3	Y8-S00-A3		3/16
Y10-S00-A4	Y6-S00-A4	Y7-S00-A4	Y8-S00-A4		1/4
Y10-S00-A5	Y6-S00-A5	Y7-S00-A5	Y8-S00-A5		5/16
Y10-S00-A6	Y6-S00-A6	Y7-S00-A6	Y8-S00-A6		3/8

THREAD	STYLE	MATERIAL
#0-80	SOCKET CAP, BINDING, BUTTON, FLAT, ROUND AND FILLISTER	STAINLESS STEEL TYPE 18-8

HEAD STYLE						CLASS 2A THREAD	A LENGTH
SOCKET CAP STOCK NO.	BINDING STOCK NO.	BUTTON STOCK NO.	FLAT STOCK NO.	ROUND STOCK NO.	FILLISTER STOCK NO.		
Y9-S0-A2	Y10S0-A2	Y19-S0-A2	Y6-S0-A2	Y7-S0-A2	Y8-S0-A2	#0-80	1/8
Y9-S0-A3	Y10S0-A3	Y19-S0-A3	Y6-S0-A3	Y7-S0-A3	Y8-S0-A3		3/16
Y9-S0-A4	Y10S0-A4	Y19-S0-A4	Y6-S0-A4	Y7-S0-A4	Y8-S0-A4		1/4
Y9-S0-A5	Y10S0-A5	Y19-S0-A5	Y6-S0-A5	Y7-S0-A5	Y8-S0-A5		5/16
Y9-S0-A6	Y10S0-A6	Y19-S0-A6	Y6-S0-A6	Y7-S0-A6	Y8-S0-A6		3/8
Y9-S0-A8	Y10S0-A8	Y19-S0-A8	Y6-S0-A8	Y7-S0-A8	Y8-S0-A8		1/2

THREAD	STYLE	MATERIAL
#2-56	SOCKET CAP, BINDING, BUTTON, FLAT, ROUND AND FILLISTER	STAINLESS STEEL TYPE 18-8

HEAD STYLE						CLASS 2A THREAD	A LENGTH
SOCKET CAP STOCK NO.	BINDING STOCK NO.	BUTTON STOCK NO.	FLAT STOCK NO.	ROUND STOCK NO.	FILLISTER STOCK NO.		
Y9-S2-A3	Y10-S2-A3	Y19-S2-A3	Y6-S2-A3	Y7-S2-A3	Y8-S2-A3	#2-56	3/16
Y9-S2-A4	Y10-S2-A4	Y19-S2-A4	Y6-S2-A4	Y7-S2-A4	Y8-S2-A4		1/4
Y9-S2-A5	Y10-S2-A5	Y19-S2-A5	Y6-S2-A5	Y7-S2-A5	Y8-S2-A5		5/16
Y9-S2-A6	Y10-S2-A6	Y19-S2-A6	Y6-S2-A6	Y7-S2-A6	Y8-S2-A6		3/8
Y9-S2-A8	Y10-S2-A8	Y19-S2-A8	Y6-S2-A8	Y7-S2-A8	Y8-S2-A8		1/2



MACHINE SCREWS

THREAD	STYLE	MATERIAL
#4-40	SOCKET CAP, BINDING, BUTTON, FLAT, ROUND AND FILLISTER	STAINLESS STEEL TYPE 18-8

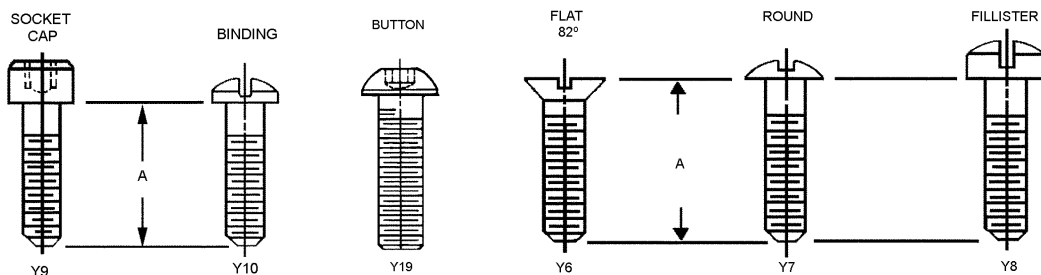
HEAD STYLE						CLASS 2A THREAD	A LENGTH
SOCKET CAP STOCK NO.	BINDING STOCK NO.	BUTTON STOCK NO.	FLAT STOCK NO.	ROUND STOCK NO.	FILLISTER STOCK NO.		
Y9-S4-A3	Y10-S4-A3	Y19-S4-A3	Y6-S4-A3	Y7-S4-A3	Y8-S4-A3	#4-40 UNC	3/16
Y9-S4-A4	Y10-S4-A4	Y19-S4-A4	Y6-S4-A4	Y7-S4-A4	Y8-S4-A4		1/4
Y9-S4-A5	Y10-S4-A5	Y19-S4-A5	Y6-S4-A5	Y7-S4-A5	Y8-S4-A5		5/16
Y9-S4-A6	Y10-S4-A6	Y19-S4-A6	Y6-S4-A6	Y7-S4-A6	Y8-S4-A6		3/8
Y9-S4-A8	Y10-S4-A8	Y19-S4-A8	Y6-S4-A8	Y7-S4-A8	Y8-S4-A8		1/2
Y9-S4-A10	Y10-S4-A10	Y19-S4-A10	Y6-S4-A10	Y7-S4-A10	Y8-S4-A10		5/8

THREAD	STYLE	MATERIAL
#6-32	SOCKET CAP, BINDING, BUTTON, FLAT, ROUND AND FILLISTER	STAINLESS STEEL TYPE 18-8

HEAD STYLE						CLASS 2A THREAD	A LENGTH
SOCKET CAP STOCK NO.	BINDING STOCK NO.	BUTTON STOCK NO.	FLAT STOCK NO.	ROUND STOCK NO.	FILLISTER STOCK NO.		
Y9-S6-A4	Y10-S6-A4	Y19-S6-A4	Y6-S6-A4	Y7-S6-A4	Y8-S6-A4	#6-32 UNC	1/4
Y9-S6-A5	Y10-S6-A5	Y19-S6-A5	Y6-S6-A5	Y7-S6-A5	Y8-S6-A5		5/16
Y9-S6-A6	Y10-S6-A6	Y19-S6-A6	Y6-S6-A6	Y7-S6-A6	Y8-S6-A6		3/8
Y9-S6-A8	Y10-S6-A8	Y19-S6-A8	Y6-S6-A8	Y7-S6-A8	Y8-S6-A8		1/2
Y9-S6-A10	Y10-S6-A10	Y19-S6-A10	Y6-S6-A10	Y7-S6-A10	Y8-S6-A10		5/8
Y9-S6-A12	Y10-S6-A12	Y19-S6-A12	Y6-S6-A12	Y7-S6-A12	Y8-S6-A12		3/4

THREAD	STYLE	MATERIAL
#8-32	SOCKET CAP, BINDING, BUTTON, FLAT, ROUND AND FILLISTER	STAINLESS STEEL TYPE 18-8

HEAD STYLE						CLASS 2A THREAD	A LENGTH
SOCKET CAP STOCK NO.	BINDING STOCK NO.	BUTTON STOCK NO.	FLAT STOCK NO.	ROUND STOCK NO.	FILLISTER STOCK NO.		
Y9-S8-A4	Y10-S8-A4	Y19-S8-A4	Y6-S8-A4	Y7-S8-A4	Y8-S8-A4	#8-32 UNC	1/4
Y9-S8-A5	Y10-S8-A5	Y19-S8-A5	Y6-S8-A5	Y7-S8-A5	Y8-S8-A5		5/16
Y9-S8-A6	Y10-S8-A6	Y19-S8-A6	Y6-S8-A6	Y7-S8-A6	Y8-S8-A6		3/8
Y9-S8-A8	Y10-S8-A8	Y19-S8-A8	Y6-S8-A8	Y7-S8-A8	Y8-S8-A8		1/2
Y9-S8-A10	Y10-S8-A10	Y19-S8-A10	Y6-S8-A10	Y7-S8-A10	Y8-S8-A10		5/8
Y9-S8-A12	Y10-S8-A12	Y19-S8-A12	Y6-S8-A12	Y7-S8-A12	Y8-S8-A12		3/4
Y9-S8-A16	Y10-S8-A16	Y19-S8-A16	Y6-S8-A16	Y7-S8-A16	Y8-S8-A16		1



MACHINE SCREWS

THREAD	STYLE	MATERIAL
#10-24	SOCKET CAP, BINDING, BUTTON, FLAT, ROUND AND FILLISTER	STAINLESS STEEL TYPE 18-8

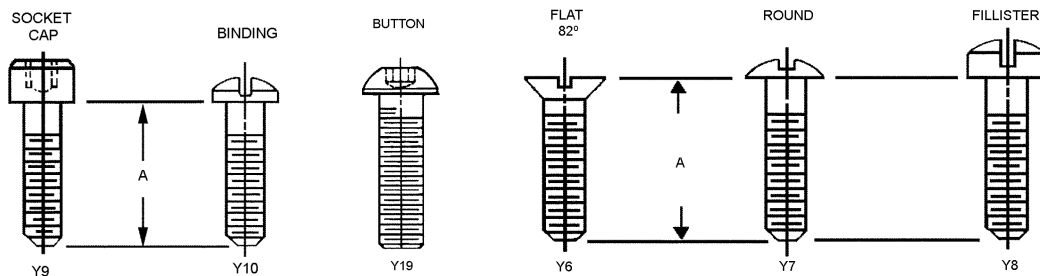
HEAD STYLE						CLASS 2A THREAD	A LENGTH
SOCKET CAP STOCK NO.	BINDING STOCK NO.	BUTTON STOCK NO.	FLAT STOCK NO.	ROUND STOCK NO.	FILLISTER STOCK NO.		
Y9-S10-A4	Y10-S10-A4	Y19-S10-A4	Y6-S10-A4	Y7-S10-A4	Y8-S10-A4	#10-24 UNC	1/4
Y9-S10-A5	Y10-S10-A5	Y19-S10-A5	Y6-S10-A5	Y7-S10-A5	Y8-S10-A5		5/16
Y9-S10-A6	Y10-S10-A6	Y19-S10-A6	Y6-S10-A6	Y7-S10-A6	Y8-S10-A6		3/8
Y9-S10-A8	Y10-S10-A8	Y19-S10-A8	Y6-S10-A8	Y7-S10-A8	Y8-S10-A8		1/2
Y9-S10-A10	Y10-S10-A10	Y19-S10-A10	Y6-S10-A10	Y7-S10-A10	Y8-S10-A10		5/8
Y9-S10-A12	Y10-S10-A12	Y19-S10-A12	Y6-S10-A12	Y7-S10-A12	Y8-S10-A12		3/4
Y9-S10-A16	Y10-S10-A16	Y19-S10-A16	Y6-S10-A16	Y7-S10-A16	Y8-S10-A16		1

THREAD	STYLE	MATERIAL
#10-32	SOCKET CAP, BINDING, BUTTON, FLAT, ROUND AND FILLISTER	STAINLESS STEEL TYPE 18-8

HEAD STYLE						CLASS 2A THREAD	A LENGTH
SOCKET CAP STOCK NO.	BINDING STOCK NO.	BUTTON STOCK NO.	FLAT STOCK NO.	ROUND STOCK NO.	FILLISTER STOCK NO.		
Y9-S11-A4	Y10-S11-A4	Y19-S11-A4	Y6-S11-A4	Y7-S11-A4	Y8-S11-A4	#10-32 UNC	1/4
Y9-S11-A5	Y10-S11-A5	Y19-S11-A5	Y6-S11-A5	Y7-S11-A5	Y8-S11-A5		5/16
Y9-S11-A6	Y10-S11-A6	Y19-S11-A6	Y6-S11-A6	Y7-S11-A6	Y8-S11-A6		3/8
Y9-S11-A8	Y10-S11-A8	Y19-S11-A8	Y6-S11-A8	Y7-S11-A8	Y8-S11-A8		1/2
Y9-S11-A10	Y10-S11-A10	Y19-S11-A10	Y6-S11-A10	Y7-S11-A10	Y8-S11-A10		5/8
Y9-S11-A12	Y10-S11-A12	Y19-S11-A12	Y6-S11-A12	Y7-S11-A12	Y8-S11-A12		3/4
Y9-S11-A16	Y10-S11-A16	Y19-S11-A16	Y6-S11-A16	Y7-S11-A16	Y8-S11-A16		1

THREAD	STYLE	MATERIAL
1/4-20	SOCKET CAP, BINDING, BUTTON, FLAT, ROUND AND FILLISTER	STAINLESS STEEL TYPE 18-8

HEAD STYLE						CLASS 2A THREAD	A LENGTH
SOCKET CAP STOCK NO.	BINDING STOCK NO.	BUTTON STOCK NO.	FLAT STOCK NO.	ROUND STOCK NO.	FILLISTER STOCK NO.		
-	Y10-S12-A4	-	-	Y7-S12-A4	-	1/4-20 UNC	1/4
-	Y10-S12-A5	-	-	Y7-S12-A5	-		5/16
Y9-S12-A6	Y10-S12-A6	Y19-S12-A6	Y6-S12-A6	Y7-S12-A6	Y8-S12-A6		3/8
Y9-S12-A8	Y10-S12-A8	Y19-S12-A8	Y6-S12-A8	Y7-S12-A8	Y8-S12-A8		1/2
Y9-S12-A10	Y10-S12-A10	Y19-S12-A10	Y6-S12-A10	Y7-S12-A10	Y8-S12-A10		5/8
Y9-S12-A12	Y10-S12-A12	Y19-S12-A12	Y6-S12-A12	Y7-S12-A12	Y8-S12-A12		3/4
Y9-S12-A16	Y10-S12-A16	Y19-S12-A16	Y6-S12-A16	Y7-S12-A16	Y8-S12-A16		1



LONG-LOK® AND NYLOC® MACHINE SCREWS

THREAD	STYLE	MATERIAL
#0-80	SELF LOCKING - VIBRATION PROOF FLAT, ROUND, FILLISTER, BINDING AND SOCKET CAP	STAINLESS STEEL TYPE 18-8 WITH NYLON INSERT

LONG-LOCK®				NYLOC®	CLASS A THREAD	A LENGTH
FLAT STYLE STOCK NO.	ROUND STYLE STOCK NO.	FILLISTER STYLE STOCK NO.	BINDING STYLE STOCK NO.	SOCKET CAP STYLE STOCK NO.		
Y6-S0-A2-L	Y7-S0-A2-L	Y8-S0-A2-L	Y10-S0-A2-L	Y9-S0-A2-N	#0-80	1/8
Y6-S0-A3-L	Y7-S0-A3-L	Y8-S0-A3-L	Y10-S0-A3-L	Y9-S0-A3-N		3/16
Y6-S0-A4-L	Y7-S0-A4-L	Y8-S0-A4-L	Y10-S0-A4-L	Y9-S0-A4-N		1/4
Y6-S0-A5-L	Y7-S0-A5-L	Y8-S0-A5-L	Y10-S0-A5-L	Y9-S0-A5-N		5/16
Y6-S0-A6-L	Y7-S0-A6-L	Y8-S0-A6-L	Y10-S0-A6-L	Y9-S0-A6-N		3/8
Y6-S0-A8-L	Y7-S0-A8-L	Y8-S0-A8-L	Y10-S0-A8-L	Y9-S0-A8-N		1/2

THREAD	STYLE	MATERIAL
#2-56	SELF LOCKING - VIBRATION PROOF FLAT, ROUND, FILLISTER, BINDING AND SOCKET CAP	STAINLESS STEEL TYPE 18-8 WITH NYLON INSERT

LONG-LOCK®				NYLOC®	CLASS A THREAD	A LENGTH
FLAT STYLE STOCK NO.	ROUND STYLE STOCK NO.	FILLISTER STYLE STOCK NO.	BINDING STYLE STOCK NO.	SOCKET CAP STYLE STOCK NO.		
Y6-S2-A3-L	Y7-S2-A3-L	Y8-S2-A3-L	Y10-S2-A3-L	Y9-S2-A3-N	#2-56	3/16
Y6-S2-A4-L	Y7-S2-A4-L	Y8-S2-A4-L	Y10-S2-A4-L	Y9-S2-A4-N		1/4
Y6-S2-A5-L	Y7-S2-A5-L	Y8-S2-A5-L	Y10-S2-A5-L	Y9-S2-A5-N		5/16
Y6-S2-A6-L	Y7-S2-A6-L	Y8-S2-A6-L	Y10-S2-A6-L	Y9-S2-A6-N		3/8
Y6-S2-A8-L	Y7-S2-A8-L	Y8-S2-A8-L	Y10-S2-A8-L	Y9-S2-A8-N		1/2

THREAD	STYLE	MATERIAL
#4-40	SELF LOCKING - VIBRATION PROOF FLAT, ROUND, FILLISTER, BINDING AND SOCKET CAP	STAINLESS STEEL TYPE 18-8 WITH NYLON INSERT

LONG-LOCK®				NYLOC®	CLASS A THREAD	A LENGTH
FLAT STYLE STOCK NO.	ROUND STYLE STOCK NO.	FILLISTER STYLE STOCK NO.	BINDING STYLE STOCK NO.	SOCKET CAP STYLE STOCK NO.		
Y6-S4-A3-L	Y7-S4-A3-L	Y8-S4-A3-L	Y10-S4-A3-L	Y9-S4-A3-N	#4-40	3/16
Y6-S4-A4-L	Y7-S4-A4-L	Y8-S4-A4-L	Y10-S4-A4-L	Y9-S4-A4-N		1/4
Y6-S4-A5-L	Y7-S4-A5-L	Y8-S4-A5-L	Y10-S4-A5-L	Y9-S4-A5-N		5/16
Y6-S4-A6-L	Y7-S4-A6-L	Y8-S4-A6-L	Y10-S4-A6-L	Y9-S4-A6-N		3/8
Y6-S4-A8-L	Y7-S4-A8-L	Y8-S4-A8-L	Y10-S4-A8-L	Y9-S4-A8-N		1/2
Y6-S4-A10-L	Y7-S4-A10-L	Y8-S4-A10-L	Y10-S4-A10-L	Y9-S4-A10-N		5/8

THREAD	STYLE	MATERIAL
#6-32	CLASS A SELF LOCKING - VIBRATION PROOF BINDING AND SOCKET CAP	STAINLESS STEEL TYPE 18-8 WITH NYLON INSERT

LONG-LOCK®	NYLOC®		THREAD	LENGTH
BINDING STYLE STOCK NO.	SOCKET CAP STYLE STOCK NO.	BINDING STYLE STOCK NO.		
Y10-S6-A4-L	Y9-S6-A4-N	Y10-S6-A4-N	#6-32	1/4
Y10-S6-A5-L	Y9-S6-A5-N	Y10-S6-A5-N		5/16
Y10-S6-A6-L	Y9-S6-A6-N	Y10-S6-A6-N		3/8
Y10-S6-A8-L	Y9-S6-A8-N	Y10-S6-A8-N		1/2
Y10-S6-A10-L	Y9-S6-A10-N	Y10-S6-A10-N		5/8
Y10-S6-A12-L	Y9-S6-A12-N	Y10-S6-A12-N		3/4

See drawings on page F4

LONG-LOK® AND NYLOC® MACHINE SCREWS

THREAD	STYLE	MATERIAL
#8-32	SELF LOCKING - VIBRATION PROOF FLAT, ROUND, FILLISTER, BINDING AND SOCKET CAP	STAINLESS STEEL TYPE 18-8 WITH NYLON INSERT

LONG-LOCK®				NYLOC®	CLASS A THREAD	A LENGTH
FLAT STYLE STOCK NO.	ROUND STYLE STOCK NO.	FILLISTER STYLE STOCK NO.	BINDING STYLE STOCK NO.	SOCKET CAP STYLE STOCK NO.		
Y6-S8-A4-L	Y7-S8-A4-L	Y8-S8-A4-L	Y10-S8-A4-L	Y9-S8-A4-N	#8-32	1/4
Y6-S8-A5-L	Y7-S8-A5-L	Y8-S8-A5-L	Y10-S8-A5-L	Y9-S8-A5-N		5/16
Y6-S8-A6-L	Y7-S8-A6-L	Y8-S8-A6-L	Y10-S8-A6-L	Y9-S8-A6-N		3/8
Y6-S8-A8-L	Y7-S8-A8-L	Y8-S8-A8-L	Y10-S8-A8-L	Y9-S8-A8-N		1/2
Y6-S8-A10-L	Y7-S8-A10-L	Y8-S8-A10-L	Y10-S8-A10-L	Y9-S8-A10-N		5/8
Y6-S8-A12-L	Y7-S8-A12-L	Y8-S8-A12-L	Y10-S8-A12-L	Y9-S8-A12-N		3/4
Y6-S8-A16-L	Y7-S8-A16-L	Y8-S8-A16-L	Y10-S8-A16-L	Y9-S8-A16-N		1

THREAD	STYLE	MATERIAL
#10-24	SELF LOCKING - VIBRATION PROOF FLAT, ROUND, FILLISTER, BINDING AND SOCKET CAP	STAINLESS STEEL TYPE 18-8 WITH NYLON INSERT

LONG-LOCK®				NYLOC®	CLASS A THREAD	A LENGTH
FLAT STYLE STOCK NO.	ROUND STYLE STOCK NO.	FILLISTER STYLE STOCK NO.	BINDING STYLE STOCK NO.	SOCKET CAP STYLE STOCK NO.		
Y6-S10-A4-L	Y7-S10-A4-L	Y8-S10-A4-L	Y10-S10-A4-L	Y9-S10-A4-N	#10-24	1/4
Y6-S10-A5-L	Y7-S10-A5-L	Y8-S10-A5-L	Y10-S10-A5-L	Y9-S10-A5-N		5/16
Y6-S10-A6-L	Y7-S10-A6-L	Y8-S10-A6-L	Y10-S10-A6-L	Y9-S10-A6-N		3/8
Y6-S10-A8-L	Y7-S10-A8-L	Y8-S10-A8-L	Y10-S10-A8-L	Y9-S10-A8-N		1/2
Y6-S10-A10-L	Y7-S10-A10-L	Y8-S10-A10-L	Y10-S10-A10-L	Y9-S10-A10-N		5/8
Y6-S10-A12-L	Y7-S10-A12-L	Y8-S10-A12-L	Y10-S10-A12-L	Y9-S10-A12-N		3/4
Y6-S10-A16-L	Y7-S10-A16-L	Y8-S10-A16-L	Y10-S10-A16-L	Y9-S10-A16-N		1

THREAD	STYLE	MATERIAL
#10-32	SELF LOCKING - VIBRATION PROOF FLAT, ROUND, FILLISTER, BINDING AND SOCKET CAP	STAINLESS STEEL TYPE 18-8 WITH NYLON INSERT

LONG-LOCK®				NYLOC®	CLASS A THREAD	A LENGTH
FLAT STYLE STOCK NO.	ROUND STYLE STOCK NO.	FILLISTER STYLE STOCK NO.	BINDING STYLE STOCK NO.	SOCKET CAP STYLE STOCK NO.		
Y6-S11-A4-L	Y7-S11-A4-L	Y8-S11-A4-L	Y10-S11-A4-L	Y9-S11-A4-N	#10-32	1/4
Y6-S11-A5-L	Y7-S11-A5-L	Y8-S11-A5-L	Y10-S11-A5-L	Y9-S11-A5-N		5/16
Y6-S11-A6-L	Y7-S11-A6-L	Y8-S11-A6-L	Y10-S11-A6-L	Y9-S11-A6-N		3/8
Y6-S11-A8-L	Y7-S11-A8-L	Y6-S11-A8-L	Y10-S11-A8-L	Y9-S11-A8-N		1/2
Y6-S11-A10-L	Y7-S11-A10-L	Y8-S11-A10-L	Y10-S11-A10-L	Y9-S11-A10-N		5/8
Y6-S11-A12-L	Y7-S11-A12-L	Y8-S11-A12-L	Y10-S11-A12-L	Y9-S11-A12-N		3/4
Y6-S11-A16-L	Y7-S11-A16-L	Y8-S11-A16-L	Y10-S11-A16-L	Y9-S11-A16-N		1

THREAD	STYLE	MATERIAL
#1/4-20	SELF LOCKING - VIBRATION PROOF FLAT, ROUND, FILLISTER, BINDING AND SOCKET CAP	STAINLESS STEEL TYPE 18-8 WITH NYLON INSERT

LONG-LOCK®				NYLOC®	CLASS A THREAD	A LENGTH
FLAT STYLE STOCK NO.	ROUND STYLE STOCK NO.	FILLISTER STYLE STOCK NO.	BINDING STYLE STOCK NO.	SOCKET CAP STYLE STOCK NO.		
Y6-S12-A6-L	Y7-S12-A6-L	Y8-S12-A6-L	Y10-S12-A6-L	Y9-S12-A6-N	1/4-20	3/8
Y6-S12-A8-L	Y7-S12-A8-L	Y8-S12-A8-L	Y10-S12-A8-L	Y9-S12-A8-N		1/2
Y6-S12-A10-L	Y7-S12-A10-L	Y8-S12-A10-L	Y10-S12-A10-L	Y9-S12-A10-N		5/8
Y6-S12-A12-L	Y7-S12-A12-L	Y8-S12-A12-L	Y10-S12-A12-L	Y9-S12-A12-N		3/4
Y6-S12-A16-L	Y7-S12-A16-L	Y8-S12-A16-L	Y10-S12-A16-L	Y9-S12-A16-N		1

See drawings on page F4



NYLON MACHINE SCREWS

THREAD	STYLE	MATERIAL
#2-56	FLAT, ROUND, FILLISTER AND PAN	MOLDED NYLON, WHITE

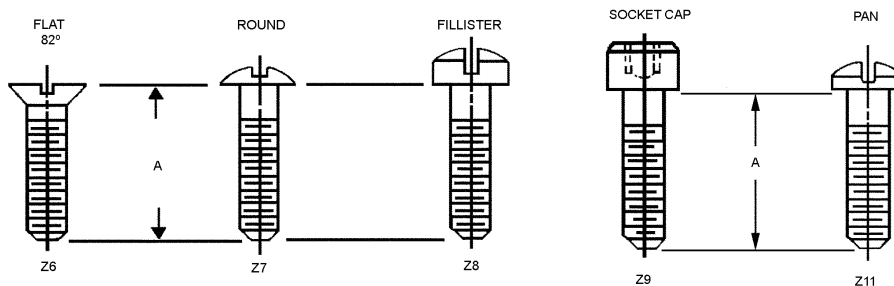
FLAT 82°	ROUND	FILLISTER	PAN	THREAD	A LENGTH
STOCK NO.	STOCK NO.	STOCK NO.	STOCK NO.		
Z6-N2-A2	Z7-N2-A2	Z8-N2-A2	Z11-N2-A2	#2-56	1/8
Z6-N2-A3	Z7-N2-A3	Z8-N2-A3	Z11-N2-A3		3/16
Z6-N2-A4	Z7-N2-A4	Z8-N2-A4	Z11-N2-A4		1/4
Z6-N2-A5	Z7-N2-A5	Z8-N2-A5	Z11-N2-A5		5/16
Z6-N2-A6	Z7-N2-A6	Z8-N2-A6	Z11-N2-A6		3/8
Z6-N2-A8	Z7-N2-A8	Z8-N2-A8	Z11-N2-A8		1/2
Z6-N2-A10	Z7-N2-A10	Z8-N2-A10	Z11-N2-A10		5/8
Z6-N2-A12	Z7-N2-A12	Z8-N2-A12	Z11-N2-A12		3/4

THREAD	STYLE	MATERIAL
#4-40	FLAT, ROUND, FILLISTER, PAN AND SOCKET CAP	MOLDED NYLON, WHITE

FLAT 82°	ROUND	FILLISTER	PAN	SOCKET CAP	THREAD	A LENGTH
STOCK NO.	STOCK NO.	STOCK NO.	STOCK NO.	STOCK NO.		
Z6-N4-A3	Z7-N4-A3	Z8-N4-A3	Z11-N4-A3	Z9-N4-A3	#4-40	3/16
Z6-N4-A4	Z7-N4-A4	Z8-N4-A4	Z11-N4-A4	Z9-N4-A4		1/4
Z6-N4-A5	Z7-N4-A5	Z8-N4-A5	Z11-N4-A5	Z9-N4-A5		5/16
Z6-N4-A6	Z7-N4-A6	Z8-N4-A6	Z11-N4-A6	Z9-N4-A6		3/8
Z6-N4-A8	Z7-N4-A8	Z8-N4-A8	Z11-N4-A8	Z9-N4-A8		1/2
Z6-N4-A10	Z7-N4-A10	Z8-N4-A10	Z11-N4-A10	Z9-N4-A10		5/8
Z6-N4-A12	Z7-N4-A12	Z8-N4-A12	Z11-N4-A12	Z9-N4-A12		3/4

THREAD	STYLE	MATERIAL
#6-32	FLAT, ROUND, FILLISTER, PAN AND SOCKET CAP	MOLDED NYLON, WHITE

FLAT 82°	ROUND	FILLISTER	PAN	SOCKET CAP	THREAD	A LENGTH
STOCK NO.	STOCK NO.	STOCK NO.	STOCK NO.	STOCK NO.		
Z6-N6-A4	Z7-N6-A4	Z8-N6-A4	Z11-N6-A4	Z9-N6-A4	#6-32	1/4
Z6-N6-A5	Z7-N6-A5	Z8-N6-A5	Z11-N6-A5	Z9-N6-A5		5/16
Z6-N6-A6	Z7-N6-A6	Z8-N6-A6	Z11-N6-A6	Z9-N6-A6		3/8
Z6-N6-A8	Z7-N6-A8	Z8-N6-A8	Z11-N6-A8	Z9-N6-A8		1/2
-	Z7-N6-A10	Z8-N6-A10	Z11-N6-A10	Z9-N6-A10		5/8
-	Z7-N6-A12	Z8-N6-A12	Z11-N6-A12	Z9-N6-A12		3/4



NYLON MACHINE SCREWS

THREAD	STYLE	MATERIAL
#8-32	FLAT, ROUND, FILLISTER, PAN AND SOCKET CAP	MOLDED NYLON, WHITE

FLAT 82°	ROUND	FILLISTER	PAN	SOCKET CAP	THREAD	A LENGTH
STOCK NO.	STOCK NO.	STOCK NO.	STOCK NO.	STOCK NO.		
Z6-N8-A4	Z7-N8-A4	Z8-N8-A4	Z11-N8-A4	Z9-N8-A4	#8-32	1/4
Z6-N8-A5	Z7-N8-A5	Z8-N8-A5	Z11-N8-A5	Z9-N8-A5		5/16
Z6-N8-A6	Z7-N8-A6	Z8-N8-A6	Z11-N8-A6	Z9-N8-A6		3/8
Z6-N8-A8	Z7-N8-A8	Z8-N8-A8	Z11-N8-A8	Z9-N8-A8		1/2
Z6-N8-A10	Z7-N8-A10	Z8-N8-A10	Z11-N8-A10	Z9-N8-A10		5/8
Z6-N8-A12	Z7-N8-A12	Z8-N8-A12	Z11-N8-A12	Z9-N8-A12		3/4
Z6-N8-A16	Z7-N8-A16	Z8-N8-A16	Z11-N8-A16	Z9-N8-A16		1

THREAD	STYLE	MATERIAL
#10-24	FLAT, ROUND, FILLISTER, PAN AND SOCKET CAP	MOLDED NYLON, WHITE

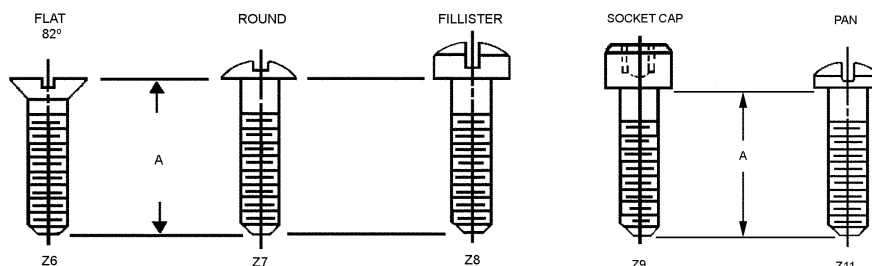
FLAT 82°	ROUND	FILLISTER	PAN	SOCKET CAP	THREAD	A LENGTH
STOCK NO.	STOCK NO.	STOCK NO.	STOCK NO.	STOCK NO.		
Z6-N10-A4	Z7-N10-A4	Z8-N10-A4	Z11-N10-A4	Z9-N10-A4	#10-24	1/4
Z6-N10-A6	Z7-N10-A6	Z8-N10-A6	Z11-N10-A6	Z9-N10-A6		3/8
Z6-N10-A8	Z7-N10-A8	Z8-N10-A8	Z11-N10-A8	Z9-N10-A8		1/2
Z6-N10-A12	Z7-N10-A12	Z8-N10-A12	Z11-N10-A12	Z9-N10-A12		3/4
Z6-N10-A16	Z7-N10-A16	Z8-N10-A16	Z11-N10-A16	Z9-N10-A16		1

THREAD	STYLE	MATERIAL
#10-32	FLAT, ROUND, FILLISTER, PAN AND SOCKET CAP	MOLDED NYLON, WHITE

FLAT 82°	ROUND	FILLISTER	PAN	SOCKET CAP	THREAD	A LENGTH
STOCK NO.	STOCK NO.	STOCK NO.	STOCK NO.	STOCK NO.		
Z6-N11-A4	Z7-N11-A4	Z8-N11-A4	Z11-N11-A4	Z9-N11-A4	#10-32	1/4
Z6-N11-A6	Z7-N11-A6	Z8-N11-A6	Z11-N11-A6	Z9-N11-A6		3/8
Z6-N11-A8	Z7-N11-A8	Z8-N11-A8	Z11-N11-A8	Z9-N11-A8		1/2
Z6-N11-A12	Z7-N11-A12	Z8-N11-A12	Z11-N11-A12	Z9-N11-A12		3/4
Z6-N11-A16	Z7-N11-A16	Z8-N11-A16	Z11-N11-A16	Z9-N11-A16		1

THREAD	STYLE	MATERIAL
1/4-20	FLAT, ROUND, FILLISTER, PAN AND SOCKET CAP	MOLDED NYLON, WHITE

FLAT 82°	ROUND	FILLISTER	PAN	SOCKET CAP	THREAD	A LENGTH
STOCK NO.	STOCK NO.	STOCK NO.	STOCK NO.	STOCK NO.		
Z6-N12-A4	Z7-N12-A4	Z8-N12-A4	Z11-N12-A4	Z9-N12-A4	1/4-20	1/4
Z6-N12-A6	Z7-N12-A6	Z8-N12-A6	Z11-N12-A6	Z9-N12-A6		3/8
Z6-N12-A8	Z7-N12-A8	Z8-N12-A8	Z11-N12-A8	Z9-N12-A8		1/2
Z6-N12-A12	Z7-N12-A12	Z8-N12-A12	Z11-N12-A12	Z9-N12-A12		3/4
Z6-N12-A16	Z7-N12-A16	Z8-N12-A16	Z11-N12-A16	Z9-N12-A16		1



INTEGRAL SEAL SCREWS

THREAD	STYLE	MATERIAL
#2-56	SLOTTED PAN HEAD	300 SERIES STAINLESS STEEL SCREW WITH SILICONE O RING

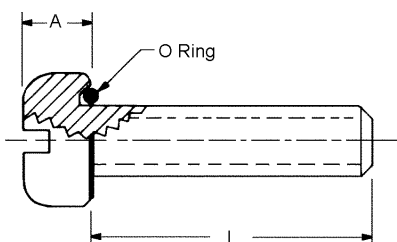
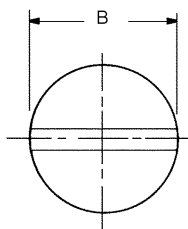
STOCK NO.	THREAD SIZE	LENGTH	A	B	CLEARANCE HOLE	
					MIN.	MAX.
Y18-S2-A4	#2-56	1/4	.055	.168	.091	.095
Y18-S2-A6		3/8				
Y18-S2-A8		1/2				
Y18-S2-A10		5/8				

THREAD	STYLE	MATERIAL
#4-40	SLOTTED PAN HEAD	300 SERIES STAINLESS STEEL SCREW WITH SILICONE O RING

STOCK NO.	THREAD SIZE	LENGTH	A	B	CLEARANCE HOLE	
					MIN.	MAX.
Y18-S4-A4	#4-40	1/4	.069	.220	.125	.129
Y18-S4-A8		1/2				
Y18-S4-A12		3/4				
Y18-S4-A16		1				

THREAD	STYLE	MATERIAL
#6-32	SLOTTED PAN HEAD	300 SERIES STAINLESS STEEL SCREW WITH SILICONE O RING

STOCK NO.	THREAD SIZE	LENGTH	A	B	CLEARANCE HOLE	
					MIN.	MAX.
Y18-S6-A4	#6-32	1/4	.083	.271	.147	.152
Y18-S6-A8		1/2				
Y18-S6-A12		3/4				
Y18-S6-A16		1				



- Reusable
- Clearance holes recommended for maximum sealing
- Maximum temperature range +500°F to -160°F
- Pressure range - up to 6000 psi

INTEGRAL SEAL SCREWS

THREAD	STYLE	MATERIAL
#8-32	SLOTTED PAN HEAD	300 SERIES STAINLESS STEEL SCREW WITH SILICONE O RING

STOCK NO.	THREAD SIZE	LENGTH	A	B	CLEARANCE HOLE	
					MIN.	MAX.
Y18-S8-A4	#8-32	1/4	.097	.323	.173	.179
Y18-S8-A8		1/2				
Y18-S8-A12		3/4				
Y18-S8-A16		1				

THREAD	STYLE	MATERIAL
#10-24	SLOTTED PAN HEAD	300 SERIES STAINLESS STEEL SCREW WITH SILICONE O RING

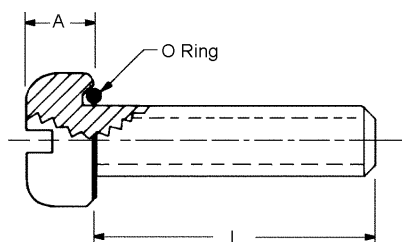
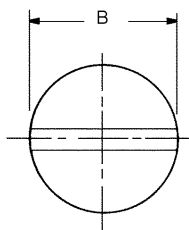
STOCK NO.	THREAD SIZE	LENGTH	A	B	CLEARANCE HOLE	
					MIN.	MAX.
Y18-S10-A6	#10-24	3/8	.113	.374	.199	.204
Y18-S10-A8		1/2				
Y18-S10-A12		3/4				
Y18-S10-A16		1				

THREAD	STYLE	MATERIAL
#10-32	SLOTTED PAN HEAD	300 SERIES STAINLESS STEEL SCREW WITH SILICONE O RING

STOCK NO.	THREAD SIZE	LENGTH	A	B	CLEARANCE HOLE	
					MIN.	MAX.
Y18-S11-A6	#10-32	3/8	.113	.374	.199	.204
Y18-S11-A8		1/2				
Y18-S11-A12		3/4				
Y18-S11-A16		1				

THREAD	STYLE	MATERIAL
1/4-20	SLOTTED PAN HEAD	300 SERIES STAINLESS STEEL SCREW WITH SILICONE O RING

STOCK NO.	THREAD SIZE	LENGTH	A	B	CLEARANCE HOLE	
					MIN.	MAX.
Y18-S12-A6	1/4-20	3/8	.148	.493	.265	.269
Y18-S12-A8		1/2				
Y18-S12-A12		3/4				
Y18-S12-A16		1				
Y18-S12-A20		1 1/4				



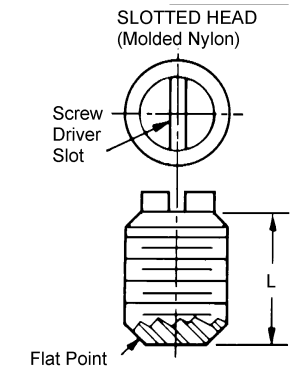
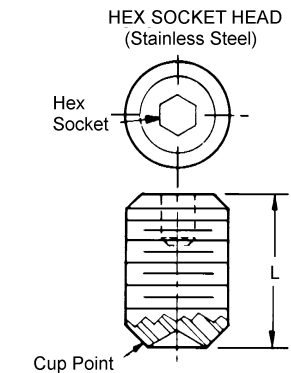
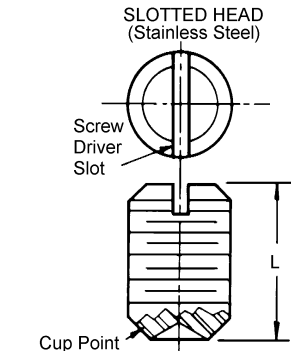
- Reusable
- Clearance holes recommended for maximum sealing
- Maximum temperature range +500°F to -160°F
- Pressure range - up to 6000 psi

F

SET SCREWS

THREAD	STYLE	MATERIAL
#0-80 TO 3/4-10	SLOTTED HEAD AND HEX SOCKET	STAINLESS STEEL 18-8 AND NYLON (SLOTTED HEAD ONLY)

SLOTTED HEAD		HEX SOCKET HEAD	SLOTTED HEAD		THREAD	L
STAINLESS STEEL	STAINLESS STEEL	STAINLESS STEEL	NYLON			
STOCK NO.	STOCK NO.	STOCK NO.	STOCK NO.			
SC1-18	SC2-18	-	-	#0-80	1/8	
SC1-19	SC2-19	-	-	#0-80	3/16	
SC1-50	SC2-50	-	-	#2-56	3/32	
SC1-1	SC2-1	-	-	#2-56	1/8	
SC1-24	SC2-24	SC11-24	-	#2-56	3/16	
-	SC2-25	SC11-25	-	#2-56	1/4	
-	SC2-59*	-	-	#2-64	1/16	
SC1-14	SC2-14	-	-	#2-64	1/8	
SC1-51	SC2-51	-	-	#4-40	3/32	
SC1-2	SC2-2	-	-	#4-40	1/8	
-	SC2-27	-	-	#4-40	3/16	
-	SC2-28	SC11-28	-	#4-40	1/4	
-	SC2-15	-	-	#5-40	3/16	
-	SC2-52	-	-	#6-32	3/32	
SC1-3	SC2-3	-	-	#6-32	1/8	
-	SC2-30	SC11-30	-	#6-32	1/4	
-	SC2-31	SC11-31	-	#6-32	3/8	
-	SC2-32	SC11-32	-	#6-32	1/2	
-	SC2-53	-	-	#8-32	1/8	
SC1-4	SC2-4	-	-	#8-32	3/16	
-	SC2-33	SC11-33	-	#8-32	1/4	
SC1-54	-	SC11-54	-	#8-32	5/16	
-	SC2-34	SC11-34	-	#8-32	3/8	
-	SC2-35	SC11-35	-	#8-32	1/2	
-	SC2-36	SC11-36	-	#8-32	5/8	
-	SC2-16	-	-	#10-24	3/16	
-	SC2-62	-	-	#10-24	1/4	
SC1-60	SC2-60	SC11-60	-	#10-24	5/16	
SC1-61	SC2-61	SC11-61	-	#10-24	3/8	
SC1-5	SC2-5	-	-	#10-32	3/16	
-	SC2-37	SC11-37	-	#10-32	1/4	
SC1-55	SC2-55	SC11-55	-	#10-32	3/8	
-	SC2-38	SC11-38	-	#10-32	1/2	
-	SC2-39	-	-	#10-32	3/4	
-	SC2-40	-	-	#10-32	1	
-	SC2-41	SC 11-41	-	1/4-20	1/4	
-	SC2-56	-	-	1/4-20	5/16	
SC1-6	SC2-6	SC11-6	-	1/4-20	3/8	
-	SC2-42	SC11-42	-	1/4-20	1/2	
-	SC2-43	-	-	1/4-20	3/4	
-	SC2-44	-	-	1/4-20	1	
-	SC2-45	-	-	1/4-20	1 1/4	
-	SC2-17	-	-	1/4-28	5/16	
-	SC2-64	-	-	1/4-28	3/8	
SC1-7	SC2-7	-	-	5/16-18	1/2	
-	SC2-65	-	-	5/16-18	3/4	
SC1-8	SC2-8	-	-	3/8-16	1/2	
-	SC2-57	-	-	3/8-16	3/8	
-	SC2-58	-	-	3/8-16	1/4	
-	SC2-66	-	-	3/8-16	1	
SC1-10	SC2-10	-	-	1/2-13	1/2	
SC1-12	SC2-12	-	-	5/8-11	3/4	
SC1-13	SC2-13	-	-	3/4-10	3/4	



See Index for Allen Socket Head Keys.

These parts are sold in packages of 10.

* Plated Steel

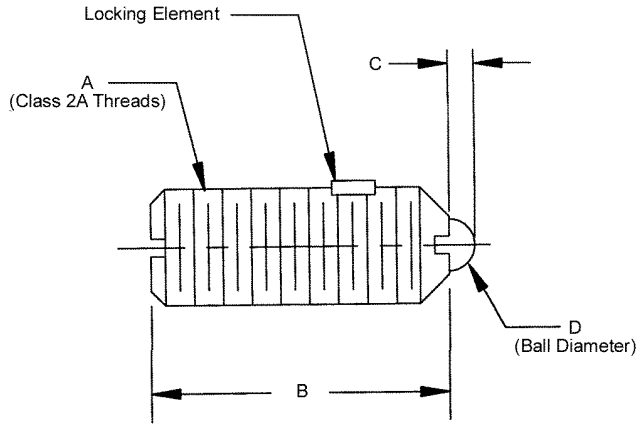
Also available

STOCK NO.	DESCRIPTION OF KIT
KIT-SC2	STAINLESS HEX HEAD SET SCREWS #2 TO 1/4"
KIT-SCA	SET SCREWS - STAINLESS STEEL - CUP POINT AND SOFT TIP #0-80 TO 1/4"



SET SCREWS

THREAD	STYLE	MATERIAL
#4-48 TO 1/4-20	BALL BUTTON	440 STAINLESS STEEL



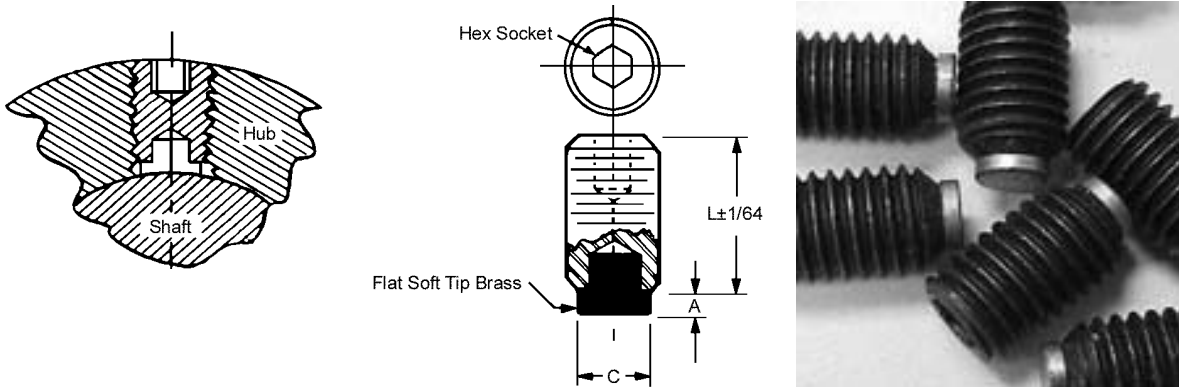
STOCK NO.	END FORCE (lbs.) INITIAL	FINAL	A	B	C	D
SC12-1	1/8	1/2	#4-48	.187	.020	.062
SC12-2	1/4	3/4	#5-40	.250	.020	.062
SC12-3	1/2	1	#6-40	.312	.023	.078
SC12-4	1/2	1 1/4	#8-36	.344	.025	.0937
SC12-5	1/2	1 1/2	#10-32	.513	.025	.0937
SC12-6	3	7	1/4-20	.531	.035	.125

Other materials available on request.

F

SET SCREWS

THREAD	STYLE	MATERIAL
#2-56 TO 3/8-16	BRASS SOFT TIP HEX SOCKET	STAINLESS STEEL AND HEAT TREATED ALLOY STEEL



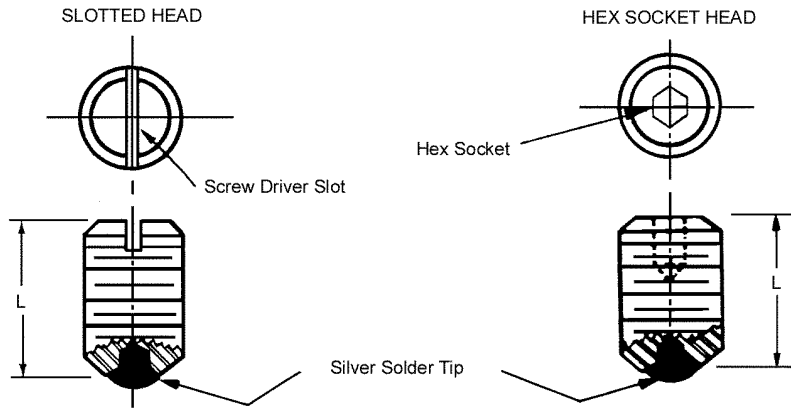
STOCK NO.	THREAD	L	C	A	MATERIAL
SC10-30	#2-56	1/8	1/32	1/32	303 STAINLESS STEEL
SC10-31	UNC-2A	1/4			
SC10-32	#4-40 UNC-2A	1/8	1/16	1/32	
SC10-33		1/4			
SC10-34		3/8			
SC10-35	#6-32 UNC-2A	1/8	1/16	1/32	
SC10-36		1/4			
SC10-37		3/8			
SC10-38	#8-32 UNC-2A	3/16	3/32	3/64	ALLOY STEEL BLACK OXIDE FINISH ROCKWELL C48-52
SC10-39		1/4			
SC10-40		3/8			
SC10-41	#10-24 / UNC-2A	1/4	1/8	3/64	
SC10-1	#10-32 UNF-2A	1/4	1/8	3/64	
SC10-2		3/8			
SC10-3		1/2			
SC10-4	1/4-20 UNC-2A	3/16	1/8	3/64	
SC10-5		1/4			
SC10-6		5/16			
SC10-7		3/8			
SC10-8		1/2			
SC10-10		3/4			
SC10-12	5/16-18 UNC-2A	1/4	3/16	3/64	
SC10-14		3/8			
SC10-15		1/2			
SC10-16		5/8			
SC10-21	3/8-16 UNC-2A	3/8	3/16	3/64	
SC10-22		1/2			
SC10-24		3/4			

- Non marring
- Self locking
- Also used as position adjustment screw
- Screws may be used over and over
- Conforms to shaft surface for positive grip

Length is exclusive of brass tip.

SET SCREWS

THREAD	STYLE	MATERIAL
#2-56 TO 3/4-10	SILVER SOLDER TIP SLOTTED HEAD AND HEX SOCKET	STAINLESS STEEL TYPE 18-8



SLOTTED HEAD STOCK NO.	HEX SOCKET HEAD STOCK NO.	SCREW SIZE	L LENGTH
-	SC6-1	#2-56	1/8
-	SC6-2	#4-40	1/8
-	SC6-28	#4-40	1/4
SC5-3	SC6-3	#6-32	1/8
SC5-30	SC6-30	#6-32	1/4
SC5-4	SC6-4	#8-32	3/16
SC5-34	SC6-34	#8-32	3/8
SC5-61	SC6-61	#10-24	3/8
SC5-5	SC6-5	#10-32	3/16
SC5-55	SC6-55	#10-32	3/8
SC5-41	SC6-41	1/4-20	1/4
SC5-6	SC6-6	1/4-20	3/8
-	SC6-64	1/4-28	3/8
SC5-7	SC6-7	5/16-18	1/2
-	SC6-65	5/16-18	3/4
SC5-8	SC6-8	3/8-16	1/2
-	SC6-66	3/8-16	1
SC5-10	SC6-10	1/2-13	1/2
SC5-12	SC6-12	5/8-11	3/4
SC5-13	SC6-13	3/4-10	3/4

- Also used as position adjustment screw
- Conforms to shaft surface for positive grip
- Non marring
- Self locking

Special sizes are available on request.

Length is exclusive of silver tip.

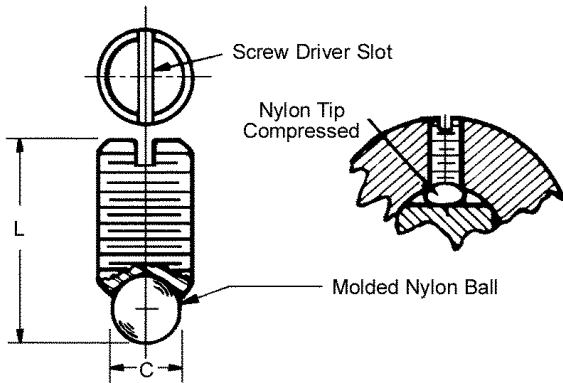
Also available

SLOTTED HEAD KIT ASSORTMENT (IN LUCITE BOX)		
STOCK NO.	SCREW RANGE	NO. OF PIECES
SC5-B	#6-32 TO 1/4-20	60
SC5-C	#10 TO 3/8-16	60

HEX SOCKET HEAD KIT ASSORTMENT (IN LUCITE BOX)		
STOCK NO.	SCREW RANGE	NO. OF PIECES
SC6-A	#4-40 TO #8-32	60
SC6-B	#8-32 TO 1/4-20	60
SC6-C	1/4-20 TO 3/8-16	60

SET SCREWS

THREAD	STYLE	MATERIAL
#2-56 TO 1/2-13	SOFT TIP SLOTTED HEAD	STAINLESS STEEL TYPE 18-8 WITH NYLON TIP

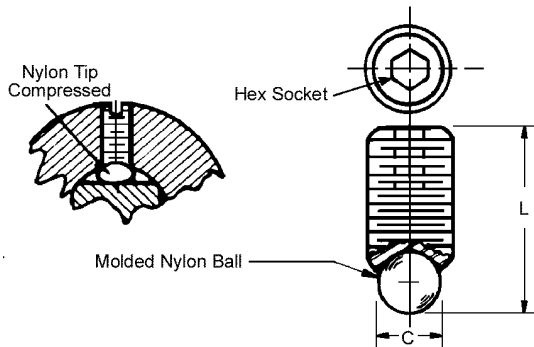


SLOTTED HEAD			
STOCK NO.	THREAD	L	C
SC3-1	#2-56	5/32	1/16
SC3-2	#4-40	11/64	1/16
SC3-3	#6-32	11/64	1/16
SC3-4	#8-32	17/64	3/32
SC3-5	#10-32	17/64	3/32
SC3-6	1/4-20	15/32	1/8
SC3-7	5/16-18	19/32	1/8
SC3-8	3/8-16	5/8	3/16
SC3-10	1/2-13	11/16	1/4

- Will not damage shafts
- Nylon compresses to make full face contact with surface



THREAD	STYLE	MATERIAL
#2-56 TO 1/2-13	SOFT TIP HEX SOCKET HEAD	STAINLESS STEEL TYPE 18-8 WITH NYLON TIP



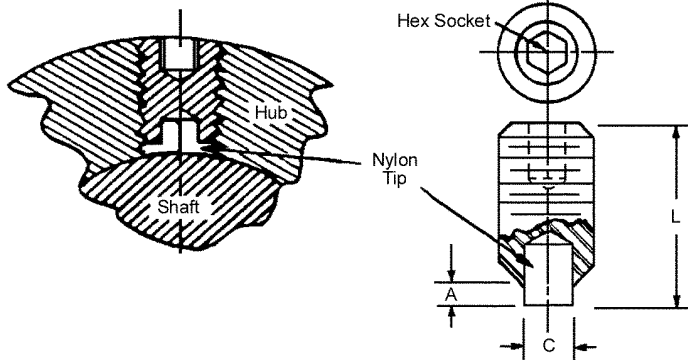
HEX SLOTTED HEAD			
STOCK NO.	THREAD	L	C
SC4-1	#2-56	5/32	1/16
SC4-2	#4-40	11/64	1/16
SC4-3	#6-32	11/64	1/16
SC4-4	#8-32	17/64	3/32
SC4-5	#10-32	17/64	3/32
SC4-6	1/4-20	15/32	1/8
SC4-7	5/16-18	19/32	1/8
SC4-8	3/8-16	5/8	3/16
SC4-10	1/2-13	11/16	1/4

- Will not damage shafts
- Nylon compresses to make full face contact with surface



SET SCREWS

THREAD	STYLE	MATERIAL
#2-56 TO 1/2-13	SOFT TIP HEX SOCKET HEAD	STAINLESS STEEL TYPE 18-8 WITH NYLON TIP



STOCK NO.	THREAD	L	C	A
SC8-1 SC8-2 SC8-31	#2-56	5/32 1/4 9/32	1/32	1/32
SC8-4 SC8-5 SC8-32	#3-48	1/4 5/32 9/32	1/32	1/32
SC8-6 SC8-33	#4-40	3/8 13/32	1/16	1/32
SC8-7 SC8-8	#5-40	5/32 3/8	1/16	1/32
SC8-17 SC8-9 SC8-29 SC8-10 SC8-34	#6-32	5/32 7/32 9/32 5/16 17/32	1/16	1/32
SC8-11 SC8-12 SC8-30 SC8-35	#8-32	15/64 3/8 27/64 43/64	3/32	3/64
SC8-19 SC8-20	#10-24	15/64 27/64	3/32	3/64
SC8-13 SC8-14 SC8-21 SC8-36	#10-32	15/64 5/16 27/64 43/64	3/32	3/64
SC8-15 SC8-22 SC8-16 SC8-37 SC8-38	1/4-20	5/16 7/16 1/2 13/16 1 1/16	1/8	1/16
SC8-23	1/4-28	7/16	1/8	1/16
SC8-24 SC8-39 SC8-40	5/16-18	19/32 27/32 1 3/32	3/16	3/32
SC8-25 SC8-41 SC8-42	3/8-16	19/32 27/32 1 3/32	3/16	3/32
SC8-26 SC8-43	1/2-13	3/4 1 1/8	1/4	1/8

- Self locking
- Extra holding power from full face control
- Will not mar or damage shaft
- Nylon "soft tip" conforms to shape of shaft

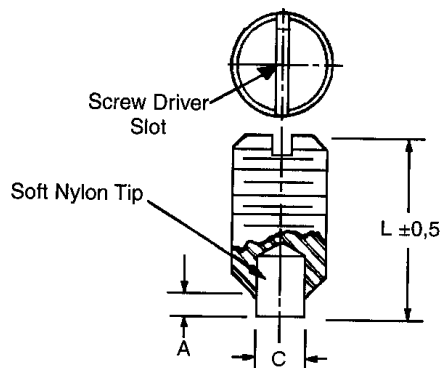
F

Also available

STOCK NO.	DESCRIPTION OF KIT	NO. OF PARTS
KITSC8-A	SOFT TIP SET SCREW KIT #2-56 TO #10	90 PIECES
KIT-SC8-B	SOFT TIP SET SCREW #10-24 TO 1/2-13	60 PIECES

SET SCREWS

THREAD	STYLE	MATERIAL
#2-56 TO 1/4-20	SOFT TIP SLOTTED HEAD	STAINLESS STEEL TYPE 18-8 WITH NYLON TIP



STOCK NO.	THREAD	L	C	A
SC7-1	#2-56	5/32	1/32	1/32
SC7-5 SC7-17	#4-40 #6-32	5/32	1/16	
SC7-11 SC7-19 SC7-13	#8-32 #10-24 #10-32	15/64	3/32	3/64
SC7-15	1/4-20	5/16	1/8	1/16

- Self locking
- Non marring
- Also used as position adjustment screw
- Screw may be used over and over
- Conforms to shaft surface for positive grip

SHOULDER SCREWS

THREAD	STYLE	MATERIAL
#4-40 UNC-2A	SLOTTED HEAD	303 STAINLESS STEEL AND 416 STAINLESS STEEL HARDENED RC 26-36

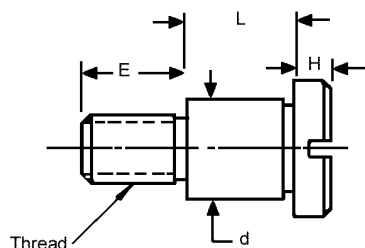
416 STAINLESS STEEL HARDENED RC 26-36 STOCK NO.	303 STAINLESS STEEL STOCK NO.	THREAD	d +.000 -.001	L +.002 -.000	D	H	E
PL-1 PL-2 PL-3 PL-4 PL-5	PL-1-3 PL-2-3 PL-3-3 PL-4-3 PL-5-3	#4-40 UNC-2A	.1245	.1255 .1880 .2505 .3130 .3755	1/4	1/8	5/32

THREAD	STYLE	MATERIAL
#8-32 UNC-2A	SLOTTED HEAD	303 STAINLESS STEEL AND 416 STAINLESS STEEL HARDENED RC 26-36

416 STAINLESS STEEL HARDENED RC 26-36 STOCK NO.	303 STAINLESS STEEL STOCK NO.	THREAD	d +.000 -.001	L +.002 -.000	D	H	E
PL-6 PL-7 PL-8 PL-9 PL-10 PL-11 PL-12 PL-13 PL-14 PL-15 PL-16	PL-6-3 PL-7-3 PL-8-3 PL-9-3 PL-10-3 PL-11-3 PL-12-3 PL-13-3 PL-14-3 PL-15-3 PL-16-3	#8-32 UNC-2A	.1870	.1255 .1880 .2505 .3130 .3755 .5005 .6255 .7505 1.0005 1.2605 1.5005	5/16	5/32	3/16

THREAD	STYLE	MATERIAL
#10-32 UNC-2A	SLOTTED HEAD	303 STAINLESS STEEL AND 416 STAINLESS STEEL HARDENED RC 26-36

416 STAINLESS STEEL HARDENED RC 26-36 STOCK NO.	303 STAINLESS STEEL STOCK NO.	THREAD	d +.000 -.001	L +.002 -.000	D	H	E
PL-17 PL-18 PL-19 PL-20 PL-21 PL-22 PL-23 PL-24 PL-25 PL-26 PL-27	PL-17-3 PL-18-3 PL-19-3 PL-20-3 PL-21-3 PL-22-3 PL-23-3 PL-24-3 PL-25-3 PL-26-3 PL-27-3	#10-32 UNF-2A	.2495	.1255 .1880 .2505 .3130 .3755 .5005 .6255 .7505 1.0005 1.2505 1.5005	3/8	3/16	1/4



F

SHOULDER SCREWS

THREAD	STYLE	MATERIAL
1/4-20 UNC-2A	SLOTTED HEAD	303 STAINLESS STEEL AND 416 STAINLESS STEEL HARDENED RC 26-36

416 STAINLESS STEEL HARDENED RC 26-36	303 STAINLESS STEEL	THREAD	d + .000 - .001	L + .002 - .000	D	H	E
STOCK NO.	STOCK NO.						
PL-28 PL-29 PL-30 PL-31 PL-32 PL-33	PL-28-3 PL-29-3 PL-30-3 PL-31-3 PL-32-3 PL-33-3	1/4-20 UNC-2A	.3120	.2505 .3130 .3755 .5005 .6255 .7505	1/2	7/32	7/16

THREAD	STYLE	MATERIAL
1/4-20 UNC-2A	SLOTTED HEAD	303 STAINLESS STEEL AND 416 STAINLESS STEEL HARDENED RC 26-36

416 STAINLESS STEEL HARDENED RC 26-36	303 STAINLESS STEEL	THREAD	d + .000 - .001	L + .002 - .000	D	H	E
STOCK NO.	STOCK NO.						
PL-34 PL-35 PL-36 PL-37	PL-34-3 PL-35-3 PL-36-3 PL-37-3	1/4-20 UNC-2A	.3745	.3130 .3755 .5005 .6255	1/2	7/32	7/16

THREAD	STYLE	MATERIAL
5/16-18 UNC-2A	SLOTTED HEAD	303 STAINLESS STEEL AND 416 STAINLESS STEEL HARDENED RC 26-36

416 STAINLESS STEEL HARDENED RC 26-36	303 STAINLESS STEEL	THREAD	d + .000 - .001	L + .002 - .000	D	H	E
STOCK NO.	STOCK NO.						
PL-38 PL-39 PL-40 PL-41	PL-38-3 PL-39-3 PL-40-3 PL-41-3	5/16-18 UNC-2A	.3745	.3130 .3755 .5005 .6255	9/16	1/4	1/2

THREAD	STYLE	MATERIAL
3/8-16 UNC-2A	SLOTTED HEAD	303 STAINLESS STEEL AND 416 STAINLESS STEEL HARDENED RC 26-36

416 STAINLESS STEEL HARDENED RC 26-36	303 STAINLESS STEEL	THREAD	d + .000 - .001	L + .002 - .000	D	H	E
STOCK NO.	STOCK NO.						
PL-42 PL-43 PL-44 PL-45	PL-42-3 PL-43-3 PL-44-3 PL-45-3	3/8-16 UNC-2A	.4995	.5005 .6255 .7505 1.0005	3/4	5/16	5/8

Drawing on previous page.

SHOULDER SCREWS

THREAD	STYLE	MATERIAL
#4-40 UNC-2A	HEX SOCKET HEAD	303 STAINLESS STEEL AND 416 STAINLESS STEEL HARDENED RC 26-36

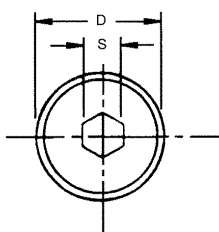
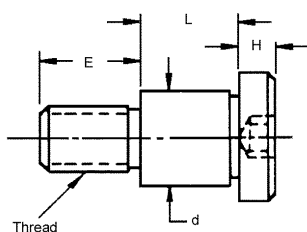
416 STAINLESS STEEL HARDENED RC 26-36	303 STAINLESS STEEL	THREAD	d + .000 - .001	L + .002 - .000	D	H	E	S
STOCK NO.	STOCK NO.							
PZ-1	PZ-1-3	#4-40 UNC-2A	.1245	.1255	1/4	1/8	5/32	5/64
PZ-2	PZ-2-3			.1880				
PZ-3	PZ-3-3			.2505				
PZ-4	PZ-4-3			.3130				
PZ-5	PZ-5-3			.3755				

THREAD	STYLE	MATERIAL
#8-32 UNC-2A	HEX SOCKET HEAD	303 STAINLESS STEEL AND 416 STAINLESS STEEL HARDENED RC 26-36

416 STAINLESS STEEL HARDENED RC 26-36	303 STAINLESS STEEL	THREAD	d + .000 - .001	L + .002 - .000	D	H	E	S
STOCK NO.	STOCK NO.							
PZ-6	PZ-6-3	#8-32 UNC-2A	.1870	.1255	5/16	5/32	3/16	3/32
PZ-7	PZ-7-3			.1880				
PZ-8	PZ-8-3			.2505				
PZ-9	PZ-9-3			.3130				
PZ-10	PZ-10-3			.3755				
PZ-11	PZ-11-3			.5005				
PZ-12	PZ-12-3			.6255				
PZ-13	PZ-13-3			.7505				
PZ-14	PZ-14-3			1.0005				
PZ-15	PZ-15-3			1.2505				
PZ-16	PZ-16-3			1.5005				

THREAD	STYLE	MATERIAL
#10-32 UNC-2A	HEX SOCKET HEAD	303 STAINLESS STEEL AND 416 STAINLESS STEEL HARDENED RC 26-36

416 STAINLESS STEEL HARDENED RC 26-36	303 STAINLESS STEEL	THREAD	d + .000 - .001	L + .002 - .000	D	H	E	S
STOCK NO.	STOCK NO.							
PZ-17	PZ-17-3	#10-32 UNF-2A	.2495	.1255	3/8	3/16	1/4	1/8
PZ-18	PZ-18-3			.1880				
PZ-19	PZ-19-3			.2505				
PZ-20	PZ-20-3			.3130				
PZ-21	PZ-21-3			.3755				
PZ-22	PZ-22-3			.5005				
PZ-23	PZ-23-3			.6255				
PZ-24	PZ-24-3			.7505				
PZ-25	PZ-25-3			1.0005				
PZ-26	PZ-26-3			1.2505				
PZ-27	PZ-27-3			1.5005				



SHOULDER SCREWS

THREAD	STYLE	MATERIAL
1/4-20 UNC-2A	HEX SOCKET HEAD	303 STAINLESS STEEL AND 416 STAINLESS STEEL HARDENED RC 26-36

416 STAINLESS STEEL HARDENED RC 26-36	303 STAINLESS STEEL	THREAD	d + .000 - .001	L + .002 - .000	D	H	E	S
STOCK NO.	STOCK NO.							
PZ-28 PZ-29 PZ-30 PZ-31 PZ-32 PZ-33	PZ-28-3 PZ-29-3 PZ-30-3 PZ-31-3 PZ-32-3 PZ-33-3	1/4-20 UNC-2A	.3120	.2505 .3130 .3755 .5005 .6255 .7505	1/2	7/32	7/16	5/32

THREAD	STYLE	MATERIAL
1/4-20 UNC-2A	HEX SOCKET HEAD	303 STAINLESS STEEL AND 416 STAINLESS STEEL HARDENED RC 26-36

416 STAINLESS STEEL HARDENED RC 26-36	303 STAINLESS STEEL	THREAD	d + .000 - .001	L + .002 - .000	D	H	E	S
STOCK NO.	STOCK NO.							
PZ-34 PZ-35 PZ-36 PZ-37	PZ-34-3 PZ-35-3 PZ-36-3 PZ-37-3	1/4-20 UNC-2A	.3745	.3130 .3755 .5005 .6255	1/2	7/32	7/16	5/32

THREAD	STYLE	MATERIAL
5/16-18 UNC-2A	HEX SOCKET HEAD	303 STAINLESS STEEL AND 416 STAINLESS STEEL HARDENED RC 26-36

416 STAINLESS STEEL HARDENED RC 26-36	303 STAINLESS STEEL	THREAD	d + .000 - .001	L + .002 - .000	D	H	E	S
STOCK NO.	STOCK NO.							
PZ-38 PZ-39 PZ-40 PZ-41	PZ-38-3 PZ-39-3 PZ-40-3 PZ-41-3	5/16-18 UNC-2A	.3745	.3130 .3755 .5005 .6255	9/16	1/4	1/2	3/16

THREAD	STYLE	MATERIAL
3/8-16 UNC-2A	HEX SOCKET HEAD	303 STAINLESS STEEL AND 416 STAINLESS STEEL HARDENED RC 26-36

416 STAINLESS STEEL HARDENED RC 26-36	303 STAINLESS STEEL	THREAD	d + .000 - .001	L + .002 - .000	D	H	E	S
STOCK NO.	STOCK NO.							
PZ-42 PZ-43 PZ-44 PZ-45	PZ-42-3 PZ-43-3 PZ-44-3 PZ-45-3	3/8-16 UNC-2A	.4995	.5005 .6255 .7505 1.0005	3/4	5/16	5/8	1/4

Drawing on previous page. See index for hex wrenches.

PRECISION CAPTIVE SCREWS

THREAD	STYLE	MATERIAL
#4-40 TO 10-32 UNC-2A	SLOTTED HEAD	303 STAINLESS STEEL

SLOTTED HEAD STOCK NO.	L	M	H	E	D	THREAD UN-2A
Z12-1	.281	.187	1/8	.072	1/4	#4-40
Z12-2	.343	.187	1/8	.072	1/4	#4-40
Z12-3	.312	.218	1/8	.086	9/32	#6-32
Z12-4	.375	.218	1/8	.086	9/32	#6-32
Z12-5	.437	.218	1/8	.086	9/32	#6-32
Z12-6	.406	.250	5/32	.114	5/16	#8-32
Z12-7	.468	.250	5/32	.114	5/16	#8-32
Z12-8	.531	.250	5/32	.114	5/16	#8-32
Z12-9	.531	.312	3/16	.136	3/8	#10-32
Z12-10	.593	.312	3/16	.136	3/8	#10-32

THREAD	STYLE	MATERIAL
#4-40 TO 10-32 UNC-2A	HEX SOCKET HEAD	303 STAINLESS STEEL

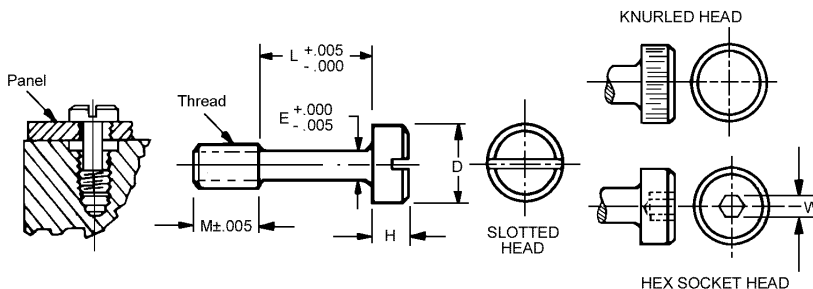
HEX SOCKET HEAD STOCK NO.	L	M	H	E	D	THREAD UN-2A	W
Z12-1-H	.281	.187	1/8	.072	1/4	#4-40	5/64
Z12-2-H	.343	.187	1/8	.072	1/4	#4-40	5/64
Z12-3-H	.312	.218	1/8	.086	9/32	#6-32	5/64
Z12-4-H	.375	.218	1/8	.086	9/32	#6-32	5/64
Z12-5-H	.437	.218	1/8	.086	9/32	#6-32	5/64
Z12-6-H	.406	.250	5/32	.114	5/16	#8-32	3/32
Z12-7-H	.468	.250	5/32	.114	5/16	#8-32	3/32
Z12-8-H	.531	.250	5/32	.114	5/16	#8-32	3/32
Z12-9-H	.531	.312	3/16	.136	3/8	#10-32	1/8
Z12-10-H	.593	.312	3/16	.136	3/8	#10-32	1/8

See index for hex wrenches.



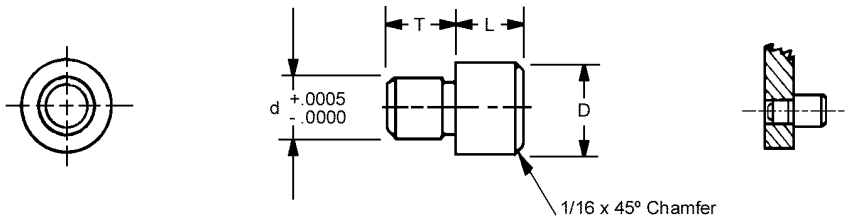
THREAD	STYLE	MATERIAL
#4-40 TO 10-32 UNC-2A	KNURLED HEAD	303 STAINLESS STEEL

KNURLED HEAD STOCK NO.	L	M	H	E	D	THREAD UN-2A
Z12-1-K	.281	.187	1/8	.072	1/4	#4-40
Z12-2-K	.343	.187	1/8	.072	1/4	#4-40
Z12-3-K	.312	.218	1/8	.086	9/32	#6-32
Z12-4-K	.375	.218	1/8	.086	9/32	#6-32
Z12-5-K	.437	.218	1/8	.086	9/32	#6-32
Z12-6-K	.406	.250	5/32	.114	5/16	#8-32
Z12-7-K	.468	.250	5/32	.114	5/16	#8-32
Z12-8-K	.531	.250	5/32	.114	5/16	#8-32
Z12-9-K	.531	.312	3/16	.136	3/8	#10-32
Z12-10-K	.593	.312	3/16	.136	3/8	#10-32



PRECISION JIG BUTTONS

MATERIAL
416 STAINLESS STEEL HARDENED ROCKWELL C28-32



STOCK NO.	L	T	D	d
PM-1	1/4	1/4	3/8	.1875
PM-2	3/8	1/4	3/8	.1875
PM-3	1/2	1/4	3/8	.1875
PM-4	1/4	5/16	1/2	.2500
PM-5	3/8	5/16	1/2	.2500
PM-6	1/2	5/16	1/2	.3125
PM-7	3/4	5/16	1/2	.3125
PM-8	1	5/16	1/2	.3125

THUMB SCREWS

THREAD	STYLE	MATERIAL
#4-40 UNC-2A	PLASTIC HEAD, KNURLED	303 STAINLESS STEEL WITH BLACK PLASTIC HEAD

STOCK NO.	THREAD	A	B	C	D	L
PQC-1	#4-40 UNC-2A	5/16	11/64	9/32	.112	1/4
PQC-2						5/16
PQC-3						3/8
PQC-4						1/2
PQC-5						5/8

THREAD	STYLE	MATERIAL
#6-32 UNC-2A	PLASTIC HEAD, KNURLED	303 STAINLESS STEEL WITH BLACK PLASTIC HEAD

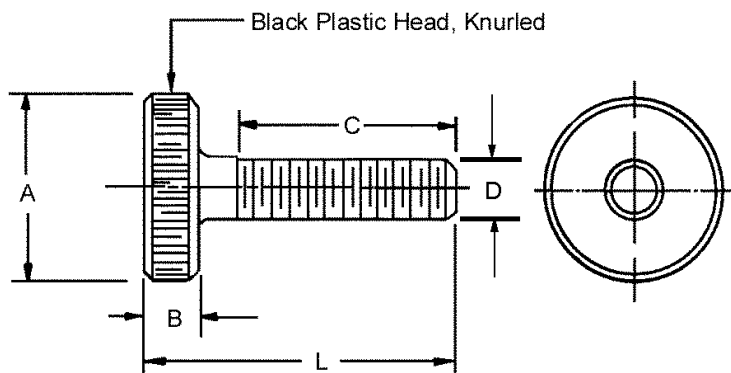
STOCK NO.	THREAD	A	B	C	D	L
PQC-6	#6-32 UNC-2A	3/8	3/16	21/64	.138	5/16
PQC-7						3/8
PQC-8						1/2
PQC-9						5/8
PQC-10						3/4

THREAD	STYLE	MATERIAL
#8-32 UNC-2A	PLASTIC HEAD, KNURLED	303 STAINLESS STEEL WITH BLACK PLASTIC HEAD

STOCK NO.	THREAD	A	B	C	D	L
PQC-11	#8-32 UNC-2A	1/2	7/32	3/8	.164	3/8
PQC-12						1/2
PQC-13						5/8
PQC-14						3/4
PQC-15						1

THREAD	STYLE	MATERIAL
#10-24 UNC-2A	PLASTIC HEAD, KNURLED	303 STAINLESS STEEL WITH BLACK PLASTIC HEAD

STOCK NO.	THREAD	A	B	C	D	L
PQC-16	#10-24 UNC-2A	5/8	1/4	27/64	.190	3/8
PQC-17						1/2
PQC-18						5/8
PQC-19						3/4
PQC-20						1



Other sizes, special lengths and non-stainless screws available on request.



THUMB SCREWS

THREAD	STYLE	MATERIAL
10-32 UNF-2A	PLASTIC HEAD, KNURLED	303 STAINLESS STEEL WITH BLACK PLASTIC HEAD

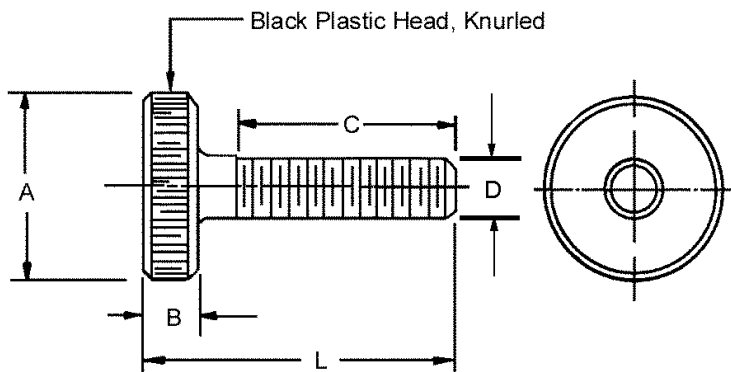
STOCK NO.	THREAD	A	B	C	D	L
PQC-21	#10-32 UNF-2A	5/8	1/4	27/64	.190	3/8
PQC-22						1/2
PQC-23						5/8
PQC-24						3/4
PQC-25						1

THREAD	STYLE	MATERIAL
1/4-20 UNC-2A	PLASTIC HEAD, KNURLED	303 STAINLESS STEEL WITH BLACK PLASTIC HEAD

STOCK NO.	THREAD	A	B	C	D	L
PQC-26	#1/4-20 UNC-2A	3/4	5/16	1/2	.250	3/8
PQC-27						1/2
PQC-28						5/8
PQC-29						3/4
PQC-30						1

THREAD	STYLE	MATERIAL
1/4-20 UNC-2A	PLASTIC HEAD, KNURLED	303 STAINLESS STEEL WITH BLACK PLASTIC HEAD

STOCK NO.	THREAD	A	B	C	D	L
PQC-31	#1/4-20 UNC-2A	1	5/16	1/2	.250	3/8
PQC-32						1/2
PQC-33						5/8
PQC-34						3/4
PQC-35						1



Other sizes, special lengths and non-stainless screws available on request.



THUMB SCREWS

THREAD	STYLE	MATERIAL
#4-40 UNC-2A	KNURLED	303 STAINLESS STEEL OR 416 STAINLESS STEEL HARDENED RC 26-32

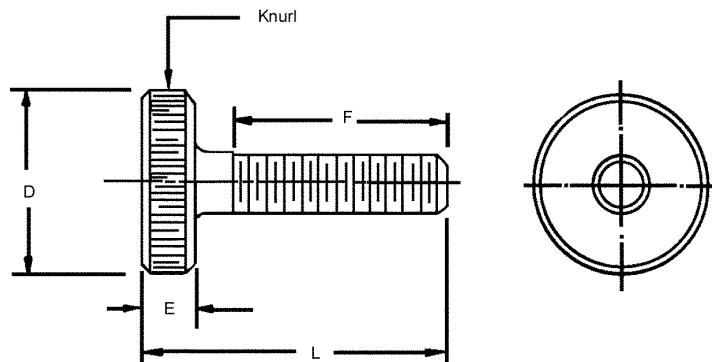
416 STAINLESS STEEL STOCK NO.	303 STAINLESS STEEL STOCK NO.	THREAD	D	L	F	E
PQ-1	PQ-1-3	#4-40 UNC-2A	1/4	1/2	5/16	1/8
PQ-2	PQ-2-3		1/4	1	7/16	1/2
PQ-3	PQ-3-3		1/4	1 1/4	5/8	1/2
PQ-4	-	#4-40 UNC-2A	3/8	1/2	5/16	1/8
-	PQ-4-3		3/8	1/2	5/16	1/8
PQ-5	PQ-5-3		3/8	5/8	7/16	1/8

THREAD	STYLE	MATERIAL
#6-32 UNC-2A	KNURLED	303 STAINLESS STEEL OR 416 STAINLESS STEEL HARDENED RC 26-32

416 STAINLESS STEEL STOCK NO.	303 STAINLESS STEEL STOCK NO.	THREAD	D	L	F	E
PQ-6	PQ-6-3	#6-32 UNC-2A	1/4	1	7/16	1/2
PQ-7	PQ-7-3		1/4	1 1/4	5/8	1/2
PQ-8	PQ-8-3		1/4	1 1/2	13/16	1/2
PQ-9	PQ-9-3	#6-32 UNC-2A	3/8	1/2	5/16	1/8
PQ-10	PQ-10-3		3/8	5/8	3/8	1/8

THREAD	STYLE	MATERIAL
#8-32 UNC-2A	KNURLED	303 STAINLESS STEEL OR 416 STAINLESS STEEL HARDENED RC 26-32

416 STAINLESS STEEL STOCK NO.	303 STAINLESS STEEL STOCK NO.	THREAD	D	L	F	E
PQ-11	PQ-11-3	#8-32 UNC-2A	1/4	1	7/16	1/2
PQ-12	PQ-12-3		1/4	1 1/4	5/8	1/2
PQ-13	PQ-13-3		1/4	1 1/2	13/16	1/2
PQ-14	PQ-14-3	#8-32 UNC-2A	3/8	1/2	5/16	1/8
PQ-15	PQ-15-3		3/8	5/8	3/8	1/8

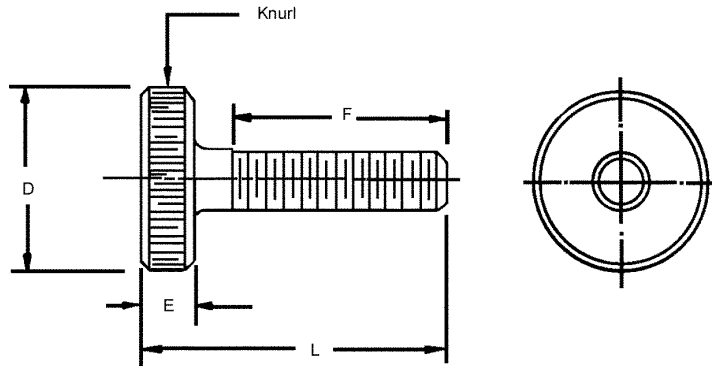


F

THUMB SCREWS

THREAD	STYLE	MATERIAL
#10-24 UNC-2A	KNURLED	303 STAINLESS STEEL OR 416 STAINLESS STEEL HARDENED RC 26-32

416 STAINLESS STEEL STOCK NO.	303 STAINLESS STEEL STOCK NO.	THREAD	D	L	F	E
PQ-16	PQ-16-3	#10-24 UNC-2A	3/8	11/16	7/16	3/16
PQ-17	PQ-17-3		3/8	15/16	5/8	3/16
PQ-18	PQ-18-3		3/8	1 3/16	13/16	3/16
PQ-19	PQ-19-3		3/8	1 7/16	1	3/16
PQ-20	PQ-20-3	#10-24 UNC-2A	1/2	15/16	5/8	3/16
PQ-21	PQ-21-3		1/2	1 3/16	13/16	3/16
PQ-22	PQ-22-3		1/2	1 7/16	1	3/16
PQ-23	PQ-23-3		1/2	1 11/16	1 1/4	3/16
PQ-24	PQ-24-3	#10-24 UNC-2A	3/4	15/16	5/8	3/16
PQ-25	PQ-25-3		3/4	1 3/16	13/16	3/16
PQ-26	PQ-26-3		3/4	1 7/16	1	3/16
PQ-27	PQ-27-3		3/4	1 11/16	1 1/4	3/16



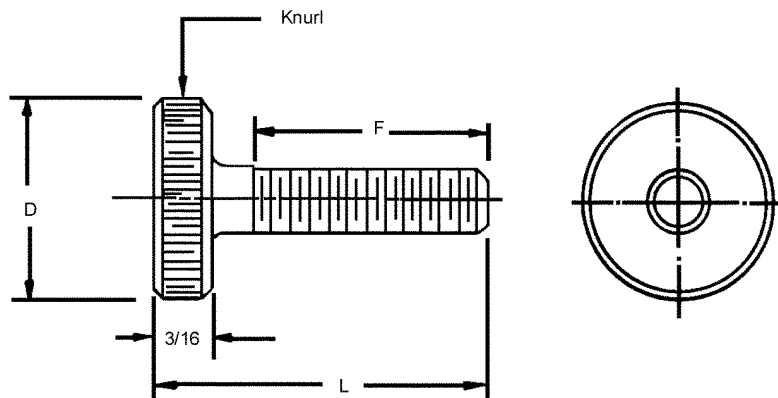
THUMB SCREWS

THREAD	STYLE	MATERIAL
#10-32 UNF-2A	KNURLED	303 STAINLESS STEEL OR 416 STAINLESS STEEL HARDENED RC 26-32

416 STAINLESS STEEL STOCK NO.	303 STAINLESS STEEL STOCK NO.	THREAD	D	L	F
PQ-28	PQ-28-3	#10-32 UNF-2A	3/8	11/16	7/16
PQ-29	PQ-29-3			15/16	5/8
PQ-30	PQ-30-3			1 3/16	13/16
PQ-31	PQ-31-3			1 7/16	1
PQ-32	PQ-32-3	#10-32 UNF-2A	1/2	15/16	5/8
PQ-33	PQ-33-3			1 3/16	13/16
PQ-34	PQ-34-3			1 7/16	1
PQ-35	PQ-35-3			1 11/16	1 1/4
PQ-36	PQ-36-3	#10-32 UNF-2A	3/4	15/16	5/8
PQ-37	PQ-37-3			1 3/16	13/16
PQ-38	PQ-38-3			1 7/16	1
PQ-39	PQ-39-3			1 11/16	1 1/4

THREAD	STYLE	MATERIAL
#1/4-20 UNC-2A	KNURLED	303 STAINLESS STEEL OR 416 STAINLESS STEEL HARDENED RC 26-32

416 STAINLESS STEEL STOCK NO.	303 STAINLESS STEEL STOCK NO.	THREAD	D	L	F
PQ-40	PQ-40-3	1/4-20 UNC-2A	3/4	15/16	5/8
PQ-41	PQ-41-3			1 3/16	13/16
PQ-42	PQ-42-3			1 7/16	1
PQ-43	PQ-43-3			1 11/16	1 1/4
PQ-44	PQ-44-3			2 3/16	1 5/8
PQ-45	PQ-45-3	1/4-20 UNC-2A	1	15/16	5/8
PQ-46	PQ-46-3			1 3/16	13/16
PQ-47	PQ-47-3			1 7/16	1
PQ-48	PQ-48-3			1 11/16	1 1/4
PQ-49	PQ-49-3			2 3/16	1 5/8



THUMB SCREWS

THREAD	STYLE	MATERIAL
#4-40 UNC-2A	KNURLED SOCKET HEAD	303 STAINLESS STEEL

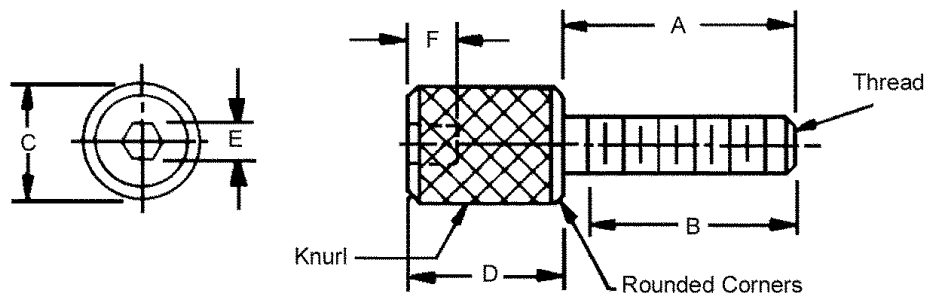
STOCK NO.	THREAD	A	C	D	B	E	F
PQH-1	#4-40	1/2	1/4	1/2	7/16	5/64	1/16
PQH-2	UNC-2A	3/4			5/8		
PQH-3	#4-40	1/2	5/16	1/2	7/16	3/32	5/64
PQH-4	UNC-2A	3/4			5/8		
PQH-5	#4-40	3/8	3/8	1/2	5/16	1/8	3/32
PQH-6	UNC-2A	1/2			7/16		

THREAD	STYLE	MATERIAL
#6-32 UNC-2A	KNURLED SOCKET HEAD	303 STAINLESS STEEL

STOCK NO.	THREAD	A	C	D	B	E	F
PQH-7	#6-32	1/2	1/4	1/2	7/16	5/64	1/16
PQH-8	UNC-2A	3/4			5/8		
PQH-9		1			13/16		
PQH-10	#6-32	1/2	5/16	1/2	7/16	3/32	5/64
PQH-11	UNC-2A	3/4			5/8		
PQH-12		1			13/16		
PQH-13	#6-32	3/8	3/8	1/2	5/16	1/8	3/32
PQH-14	UNC-2A	1/2			3/8		

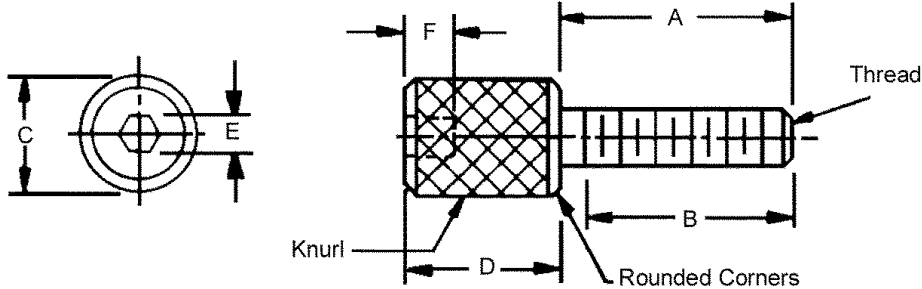
THREAD	STYLE	MATERIAL
#8-32 UNC-2A	KNURLED SOCKET HEAD	303 STAINLESS STEEL

STOCK NO.	THREAD	A	C	D	B	E	F
PQH-15	#8-32	1/2	1/4	1/2	7/16	5/64	1/16
PQH-16	UNC-2A	3/4			5/8		
PQH-17		1			13/16		
PQH-18	#8-32	1/2	5/16	1/2	7/16	3/32	5/64
PQH-19	UNC-2A	3/4			5/8		
PQH-20		1			13/16		
PQH-21	#8-32	3/8	3/8	1/2	5/16	1/8	3/32
PQH-22	UNC-2A	1/2			3/8		



THUMB SCREWS

THREAD	STYLE	MATERIAL
#10-24 UNC-2A #10-32 UNF-2A	KNURLED SOCKET HEAD	303 STAINLESS STEEL OR 416 STAINLESS STEEL HARDENED RC 26-32



STOCK NO.	THREAD	A	C	D	B	E	F
PQH-23	#10-24 UNC-2A	1/2	5/16	3/16	7/16	3/32	5/64
PQH-24		3/4			5/8		
PQH-25		1			13/16		
PQH-26		1 1/4			1		
PQH-27	#10-24 UNC-2A	1/2	3/8	1/2	7/16	1/8	3/32
PQH-28		3/4			5/8		
PQH-29		1			13/16		
PQH-30		1 1/4			1		
PQH-31	#10-32 UNF-2A	1/2	5/16	3/16	7/16	3/32	5/64
PQH-32		3/4			5/8		
PQH-33		1			13/16		
PQH-34		1 1/4			1		
PQH-35	#10-32 UNF-2A	1/2	3/8	1/2	7/16	1/8	3/32
PQH-36		3/4			5/8		
PQH-37		1			13/16		
PQH-38		1 1/4			1		

F

THUMB NUTS

THREAD	STYLE	MATERIAL
#4-40 UNC-2B	KNURLED	303 STAINLESS STEEL

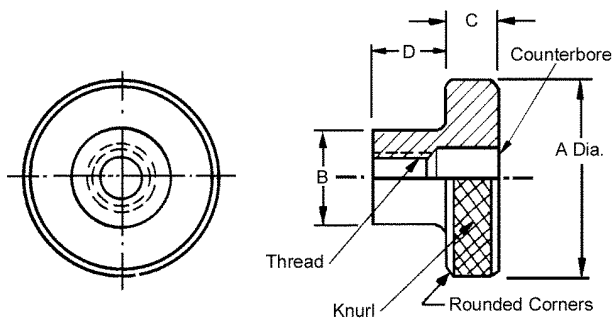
STOCK NO.	THREAD	A	B	C	D	COUNTERBORE			
						DIA.	DEEP		
PD1-1	#4-40 UNC-2B	1/2	1/4	1/8	1/4	1/8	1/8		
PD1-2		1/2			1/8	3/8			
PD1-3		3/4			1/4	1/8	1/4	1/8	1/8
PD1-4		3/4			1/2	1/8	1/8	3/8	

THREAD	STYLE	MATERIAL
#6-32 UNC-2B	KNURLED	303 STAINLESS STEEL

STOCK NO.	THREAD	A	B	C	D	COUNTERBORE			
						DIA.	DEEP		
PD1-5	#6-32 UNC-2B	1/2	1/4	1/8	1/4	#26	3/32		
PD1-6		1/2			1/2	#26	11/32		
PD1-7		3/4			1/4	1/8	1/4	#26	3/32
PD1-8		3/4			1/2	1/8	1/4	#26	11/32

THREAD	STYLE	MATERIAL
#8-32 UNC-2B	KNURLED	303 STAINLESS STEEL

STOCK NO.	THREAD	A	B	C	D	COUNTERBORE	
						DIA.	DEEP
PD1-9	#8-32 UNC-2B	1/2	5/16	1/8	1/4	-	-
PD1-10		1/2			1/2	#15	1/4
PD1-11		3/4			1/4	-	-
PD1-12		3/4			1/2	#15	1/4



THUMB NUTS

THREAD	STYLE	MATERIAL
#10-24 UNC-2B	KNURLED	303 STAINLESS STEEL

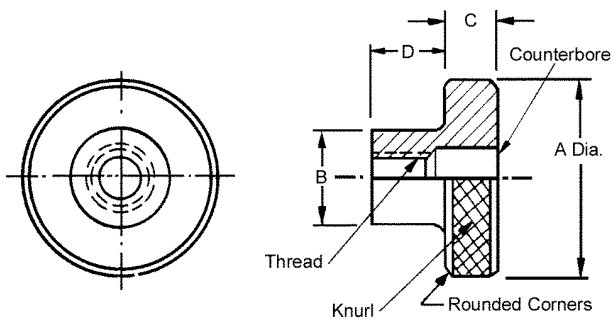
STOCK NO.	THREAD	A	B	C	D	COUNTERBORE	
						DIA.	DEEP
PD1-13	#10-24 UNC-2B	1/2	3/8	3/16	1/4	-	-
PD1-14		1/2			13/64	1/4	
PD1-15		1	1/4	-	-		
PD1-16		1	1/2	13/64	1/4		

THREAD	STYLE	MATERIAL
#10-32 UNF-2B	KNURLED	303 STAINLESS STEEL

STOCK NO.	THREAD	A	B	C	D	COUNTERBORE	
						DIA.	DEEP
PD1-17	#10-32 UNF-2B	1/2	3/8	3/16	1/4	-	-
PD1-18		1/2			13/64	1/4	
PD1-19		1	1/4	-	-		
PD1-20		1	1/2	13/64	1/4		

THREAD	STYLE	MATERIAL
#1/4-20 UNC-2B	KNURLED	303 STAINLESS STEEL

STOCK NO.	THREAD	A	B	C	D	COUNTERBORE	
						DIA.	DEEP
PD1-21	1/4-20 UNC-2B	3/4	1/2	1/4	1/4	-	-
PD1-22		3/4			17/64	1/4	
PD1-23		1	1/4	-	-		
PD1-24		1	1/2	17/64	1/4		
PD1-25		1	3/4	17/64	1/2		



F

THREADED STUDS

THREAD	STYLE	MATERIAL
#6-32	DOUBLE ENDED	303 STAINLESS STEEL

STOCK NO.	L	THREAD SIZE BOTH ENDS	D	d	B
PV-1	1	#6-32	7/32	1/2	.138 DIA.
PV-2	1 1/4			5/8	
PV-30	1 1/2			3/4	
PV-3	1 3/4			3/4	
PV-4	2			3/4	

THREAD	STYLE	MATERIAL
#8-32	DOUBLE ENDED	303 STAINLESS STEEL

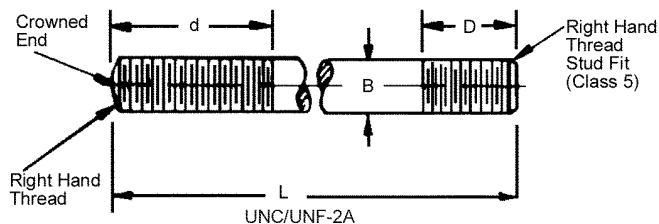
STOCK NO.	L	THREAD SIZE BOTH ENDS	D	d	B
PV-5	1	#8-32	7/32	1/2	.164 DIA.
PV-6	1 1/4			5/8	
PV-7	1 1/2			3/4	
PV-8	1 3/4			3/4	
PV-9	2			3/4	

THREAD	STYLE	MATERIAL
#10-24	DOUBLE ENDED	303 STAINLESS STEEL

STOCK NO.	L	THREAD SIZE BOTH ENDS	D	d	B
PV-10	1	#10-24	7/32	1/2	.190 DIA.
PV-11	1 1/4			5/8	
PV-12	1 1/2			3/4	
PV-13	1 3/4			3/4	
PV-31	2			3/4	

THREAD	STYLE	MATERIAL
#10-32	DOUBLE ENDED	303 STAINLESS STEEL

STOCK NO.	L	THREAD SIZE BOTH ENDS	D	d	B
PV-14	1	#10-32	7/32	1/2	.190 DIA.
PV-15	1 1/4			5/8	
PV-16	1 1/2			3/4	
PV-17	1 3/4			3/4	
PV-18	2			3/4	



THREADED STUDS

THREAD	STYLE	MATERIAL
1/4-20	DOUBLE ENDED	303 STAINLESS STEEL

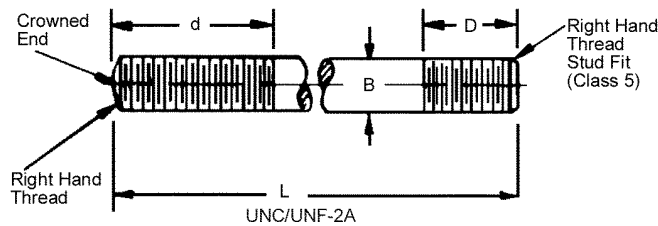
STOCK NO.	L	THREAD SIZE BOTH ENDS	D	d	B
PV-19	1 1/4	1/4-20	9/32	5/8	.250 DIA.
PV-20	1 1/2			5/8	
PV-21	1 3/4			3/4	
PV-22	2			3/4	
PV-23	2 1/2			3/4	
PV-24	1			1	

THREAD	STYLE	MATERIAL
5/16-18	DOUBLE ENDED	303 STAINLESS STEEL

STOCK NO.	L	THREAD SIZE BOTH ENDS	D	d	B
PV-25	1 1/2	5/16-18	11/32	5/8	.312 DIA.
PV-26	2			1	
PV-27	2 1/2			1 1/4	
PV-28	1			1 3/8	
PV-32	3 1/2			1 1/2	
PV-29	4			1 1/2	

THREAD	STYLE	MATERIAL
3/8-16	DOUBLE ENDED	303 STAINLESS STEEL

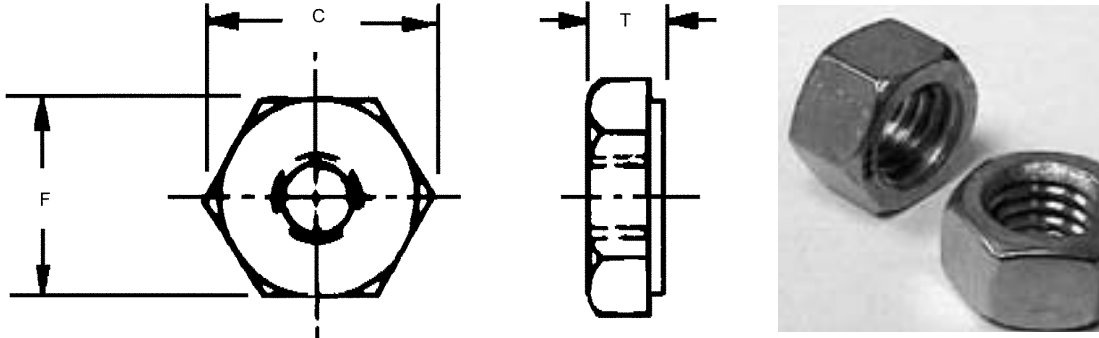
STOCK NO.	L	THREAD SIZE BOTH ENDS	D	d	B
PV-33	1 5/8	3/8-16	11/32	3/4	.375 DIA.
PV-34	2			1	
PV-35	2 1/2			1 1/4	
PV-36	1			1 3/8	
PV-37	3 1/2			1 1/2	
PV-38	4			1 1/2	



F

HEX NUTS

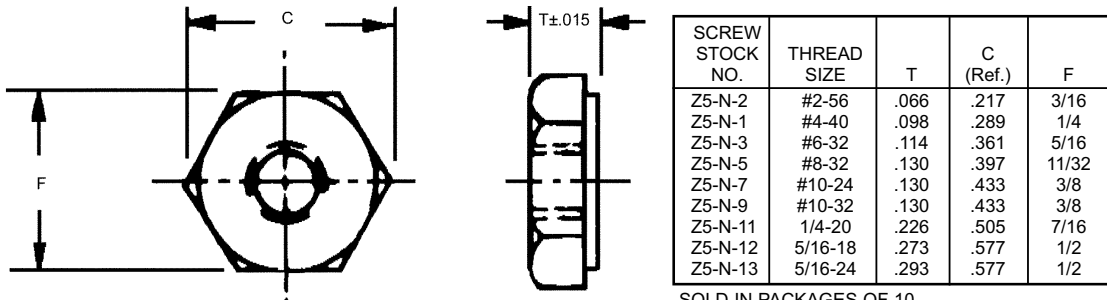
SCREW SIZE	MATERIAL
#000 TO 1/4-20	STAINLESS STEEL TYPE 18-8



SCREW STOCK NO.	SIZE UN-2B	T	C (Ref.)	F
Y5-000	#000-120	3/64	7/64	3/32
Y5-00	#00-96	3/64	7/64	3/32
Y5-0	#0-80	3/64	3/16	5/32
Y5-164	#1-64	3/64	3/16	5/32
Y5-1	#1-72	3/64	3/16	5/32
Y5-2	#2-56	1/16	7/32	3/16
Y5-4	#4-40	3/32	9/32	1/4
Y5-6	#6-32	7/64	23/64	5/16
Y5-8	#8-32	1/8	25/64	11/32
Y5-11	#10-24	1/8	7/16	3/8
Y5-10	#10-24	1/8	7/16	3/8
Y5-12	1/4-20	3/16	1/2	7/16

SCREW STOCK NO.	SIZE UN-2B	T	C (Ref.)	F
Y5-23	1/4-28	3/16	1/2	7/16
Y5-13	5/16-18	17/64	37/64	1/2
Y5-14	5/16-24	17/64	37/64	1/2
Y5-15	3/8-16	21/64	41/64	9/16
Y5-16	3/8-24	21/64	41/64	9/16
Y5-24	3/8-32	3/32	41/64	9/16
Y5-17	1/2-13	7/16	7/8	55/64
Y5-18	1/2-20	7/16	55/64	3/4
Y5-19	5/8-11	35/64	1 5/64	15/16
Y5-20	5/8-18	35/64	1 5/64	15/16
Y5-21	3/4-10	41/64	1 17/64	1 1/8
Y5-22	3/4-16	41/64	1 17/64	1 1/8

SCREW SIZE	MATERIAL
#2-56 TO 5/16-24	MOLDED NYLON - WHITE



SCREW STOCK NO.	THREAD SIZE	T	C (Ref.)	F
Z5-N-2	#2-56	.066	.217	3/16
Z5-N-1	#4-40	.098	.289	1/4
Z5-N-3	#6-32	.114	.361	5/16
Z5-N-5	#8-32	.130	.397	11/32
Z5-N-7	#10-24	.130	.433	3/8
Z5-N-9	#10-32	.130	.433	3/8
Z5-N-11	1/4-20	.226	.505	7/16
Z5-N-12	5/16-18	.273	.577	1/2
Z5-N-13	5/16-24	.293	.577	1/2

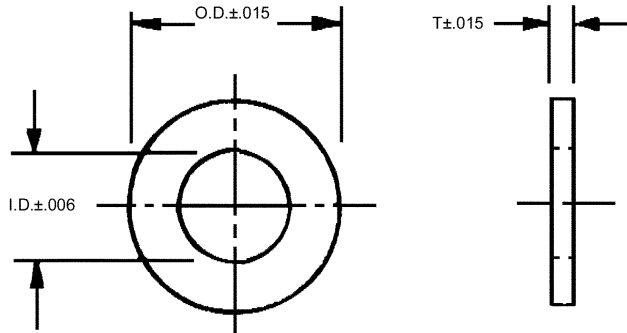
SOLD IN PACKAGES OF 10.

Also available

STOCK NO.	DESCRIPTION OF KIT	NO. OF PIECES
KIT-Z5	HEX NUTS, WASHERS, LOCK WASHERS, STAINLESS STEEL #0 TO #10	1800
KIT-Z11N	NYLON PAN HEAD SCREW KIT	480
KIT-Z9N	NYLON SOCKET HEAD SCREW KIT	480
KIT-Z6N	NYLON FLAT HEAD SCREW KIT	480
	ASSORTED SIZES WITH NUTS AND WASHERS #4 TO 1/4"	480

WASHERS

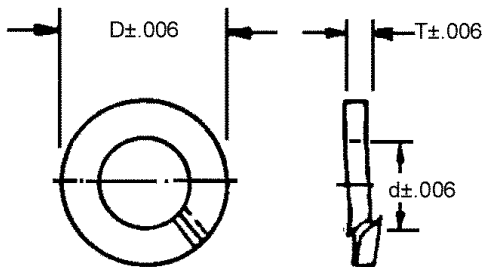
SCREW SIZE	MATERIAL	TYPE
#4 TO 1/4	MOLDED NYLON - WHITE	PLAIN



STOCK NO.	SCREW SIZE	OUTSIDE DIA.	I.D.	T
Z4-N-1	# 4	.281	.115	.047
Z4-N-3	# 6	.312	.140	.047
Z4-N-5	# 8	.375	.170	.062
Z4-N-7	# 10	.437	.200	.062
Z4-N-9	1/4	.562	.260	.062

SOLD IN PACKAGES OF 10.

SCREW SIZE	MATERIAL	TYPE
#000 TO 1/2	STAINLESS STEEL TYPE 18-8	SPLIT LOCK

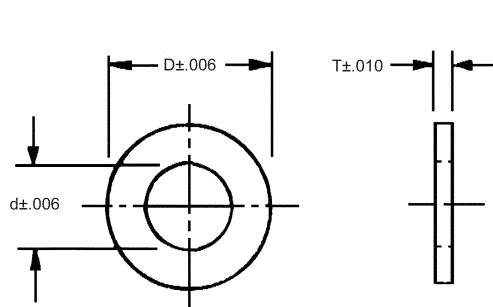


SOLD IN PACKAGES OF 10.

STOCK NO.	SCREW SIZE	D	d	T
Z3-000	#000	.093	.043	.020
Z3-00	#00	.093	.056	.020
Z3-0	#0	.130	.066	.020
Z3-1	#1	.150	.075	.020
Z3-2	#2	.166	.093	.020
Z3-4	#4	.203	.120	.025
Z3-6	#6	.244	.146	.031
Z3-8	#8	.287	.173	.040
Z3-10	#10	.327	.199	.047
Z3-12	1/4	.483	.261	.062
Z3-13	5/16	.580	.326	.078
Z3-14	3/8	.676	.390	.094
Z3-15	1/2	.875	.506	.125



SCREW SIZE	MATERIAL	TYPE
#000 TO 1/2	STAINLESS STEEL TYPE 18-8	PLAIN

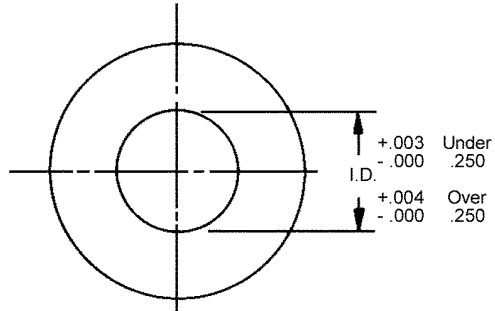
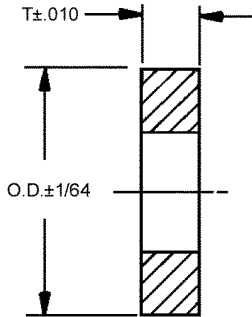


SOLD IN PACKAGES OF 10.

STOCK NO.	SCREW SIZE	D	d	T
Z4-000	#000	.090	.040	.012
Z4-00	#00	.108	.053	.015
Z4-0	#0	.156	.062	.020
Z4-1	#1	.187	.078	.020
Z4-2	#2	.187	.089	.031
Z4-4	#4	.312	.125	.031
Z4-6	#6	.375	.149	.031
Z4-8	#8	.375	.174	.031
Z4-10	#10	.438	.203	.063
Z4-12	1/4	.500	.265	.063
Z4-13	5/16	.562	.328	.063
Z4-14	3/8	.625	.390	.063
Z4-15	1/2	.750	.516	.093

WASHERS

SCREW SIZE	MATERIAL	TYPE
#4 TO 3/8	303 STAINLESS STEEL	PLAIN

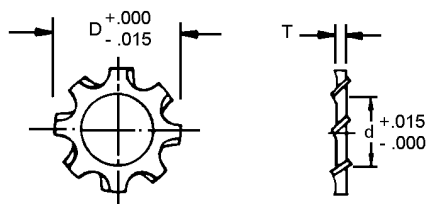


STOCK NO.	SCREW SIZE	I.D.	O.D.	T
PC5-1	#4	.116	1/4	1/16
PC5-2	#6	.144	5/16	1/16
PC5-3	#8	.169	3/8	1/16
PC5-4	#10	.196	7/16	5/64
PC5-5	1/4	.257	1/2	5/64
PC5-6	5/16	.323	5/8	3/32
PC5-7	3/8	.386	3/4	3/32

SOLD IN PACKAGES OF 10.

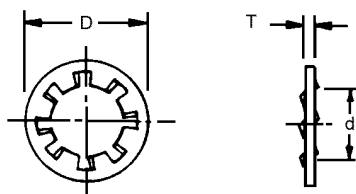
LOCK WASHERS

THREAD	STYLE	MATERIAL
#4 TO 1/2	EXTERNAL TOOTH	410 STAINLESS STEEL



STOCK NO.	THREAD	D	d	T
Z1-4	#4	.255	.120	.015
Z1-6	#6	.317	.146	.018
Z1-8	#8	.381	.173	.020
Z1-10	#10	.406	.200	.022
Z1-25	1/4	.506	.260	.025
Z1-31	5/16	.601	.326	.030
Z1-37	3/8	.695	.390	.035
Z1-50	1/2	.898	.530	.040

THREAD	STYLE	MATERIAL
#2 TO 1/2	INTERNAL TOOTH	410 STAINLESS STEEL



STOCK NO.	THREAD	D	d	T
Z2-2	#2	.185	.093	.013
Z2-4	#4	.265	.120	.015
Z2-6	#6	.288	.146	.018
Z2-8	#8	.336	.173	.020
Z2-10	#10	.381	.200	.022
Z2-25	1/4	.478	.260	.025
Z2-31	5/16	.607	.326	.030
Z2-37	3/8	.692	.390	.035
Z2-50	1/2	.883	.530	.090



Also available

STOCK NO.	DESCRIPTION OF KIT	PIECES
KIT-Z2	LOCK WASHER KIT, ASSORTED SIZES, STAINLESS STEEL, INTERNAL AND EXTERNAL TOOTH	480

THRUST WASHERS AND DISKS

SHAFT SIZE	TYPE	MATERIAL
1/8 TO 1 1/4	PLAIN HARDENED GROUND	410 STAINLESS STEEL RC 38-42 OR 1080 CARBON STEEL RC 61-63

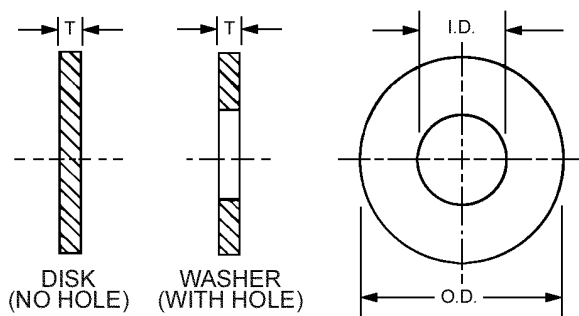
410 STAINLESS STEEL STOCK NO.	CARBON STEEL STOCK NO.	I.D. DIA. +.003 -.008	O.D. DIA. +.003 -.008	T	SHAFT SIZE
CD1-1-SS	CD1-1	1/8	7/16	.050	1/8
CD1-2-SS	CD1-2	3/16	1/2	.050	3/16
CD1-3-SS	CD1-3	1/4	9/16	.050 ±.002	1/4
CD1-4-SS	CD1-4	5/16	5/8	.050	5/16
CD1-5-SS	CD1-5	3/8	13/16	.062	3/8
CD1-6-SS	CD1-6	1/2	15/16	.062 ±.003	1/2
CD1-7-SS	CD1-7	5/8	1 1/8	.093	5/8
CD1-8-SS	CD1-8	3/4	1 1/4	.093	3/4
CD1-9-SS	CD1-9	1	1 5/8	.125 ±.005	1
CD1-10-SS	CD1-10	1 1/4	1 7/8	.125	1 1/4

SHAFT SIZE	TYPE	MATERIAL
3/16 TO 1 1/4	PLAIN PLASTIC THRUST	NYLON AND TEFLON

NYLON STOCK NO.	TEFLON® STOCK NO.	I.D. +.010 -.005	O.D. ±1/64	T ±.005	SHAFT SIZE
CD7-3	CD8-3	.188	3/4	.062	3/16
CD7-4	CD8-4	.250	5/8	.093	1/4
CD7-5	CD8-5	.500	13/16	.093	1/2
CD7-9	CD8-9	.562	1	.093	9/16
CD7-10	CD8-10	.625	1 1/16	.093	5/8
CD7-12	CD8-12	.750	1 1/8	.093	3/4
CD7-14	CD8-14	.875	2 1/8	.093	7/8
CD7-20	CD8-20	1.250	2 1/16	.093	1 1/4

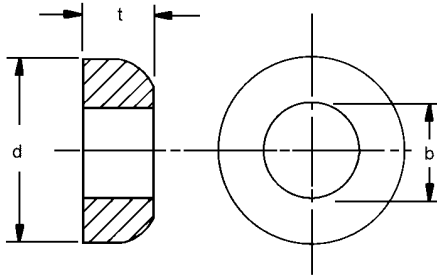
SHAFT SIZE	TYPE	MATERIAL
1/8 TO 1/2	PLAIN DISK AND WASHER	BRONZE (OIL-IMPREGNATED) OR TOOL STEEL

BRONZE OIL-IMPREGNATED		TOOL STEEL		WASHER I.D. +.004 -.000	O.D. BRONZE +0.000 -0.004	O.D. TOOL STEEL +0.008 -0.004	±.002 T	SHAFT SIZE
DISK	WASHER	DISK	WASHER					
CD2-1	CD3-1	CD4-1	CD5-1	.128	.372	.252	.062	1/8
CD2-2	CD3-2	CD4-2	CD5-2	.190	.497	.377	.062	3/16
CD2-3	CD3-3	CD4-3	CD5-3	.253	.622	.502	.062	1/4
CD2-4	CD3-4	CD4-4	CD5-4	.316	.747	.627	.093	5/16
CD2-5	CD3-5	CD4-5	CD5-5	.378	.872	.752	.125	3/8
CD2-6	CD3-6	CD4-6	CD5-6	.503	1.127	1.002	.187	1/2



SWIVEL WASHERS

SCREW SIZE	TYPE	MATERIAL
#4 TO 3/8	MALE	303 STAINLESS STEEL MACHINED

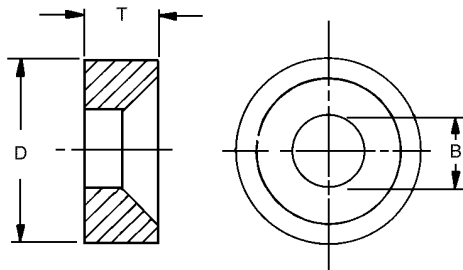


STOCK NO.	SCREW SIZE	d	b	t
PC6-1	#4	9/32	.116	1/8
PC6-2	#6	9/32	.144	1/8
PC6-3	#8	5/16	.169	1/8
PC6-4	#10	3/8	.196	5/32
PC6-5	1/4	7/16	.257	3/16
PC6-6	5/16	1/2	.323	3/16
PC6-7	3/8	5/8	.386	1/4

ASSEMBLED HEIGHT
13/64
13/64
13/64
15/64
17/64
21/64
25/64

TYPE	MATERIAL
FEMALE	303 STAINLESS STEEL MACHINED

F

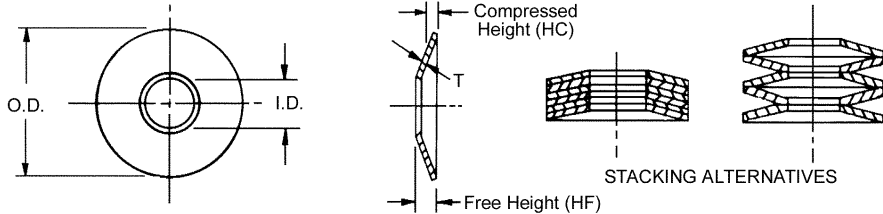


STOCK NO.	D	B	T
PC7-1	3/8	5/32	1/8
PC7-2	3/8	11/64	1/8
PC7-3	3/8	3/16	1/8
PC7-4	7/16	7/32	1/8
PC7-5	1/2	9/32	5/32
PC7-6	9/16	11/32	3/16
PC7-7	11/16	13/32	1/4

ASSEMBLED HEIGHT
13/64
13/64
13/64
15/64
17/64
21/64
25/64

WASHERS

STYLE	SHAFT SIZE	MATERIALS
BELLEVILLE	3/32 TO 3/4	302 STAINLESS STEEL *1095 CARBON STEEL

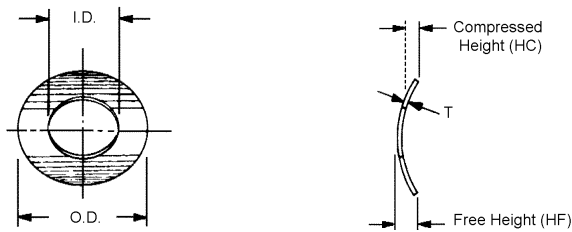


STOCK NO.	O.D. ±.010	I.D. +0.01 -.000	T ± 10%	HF (Ref.)	HC	FORCE TO COMPRESS TO HC ± 15%
ST-1	.187	.093	.010	.015	.012	15 LBS
ST-2	.250	.125	.013	.020	.017	26 LBS
ST-3	.312	.156	.016	.025	.021	41 LBS
ST-4	.375	.190	.020	.030	.025	60 LBS
ST-5	.500	.255	.025	.038	.031	95 LBS
ST-6	.625	.317	.032	.048	.040	145 LBS
ST-7	.750	.380	.040	.059	.049	235 LBS
ST-8	1.000	.505	.050	.075	.062	340 LBS
ST-9	1.250	.630	.062	.092	.077	475 LBS
ST-10*	1.500	.750	.072	.107	.089	660 LBS



Sold in packages of 10.

STYLE	SHAFT SIZE	MATERIALS
CURVED	3/32 TO 3/4	302 STAINLESS STEEL *1095 CARBON STEEL



STOCK NO.	SCREW OR ROD SIZE	HOLE SIZE	O.D. ± .010	I.D.† +.010 -.000	HF REF	T ± 10%	HC	FORCE TO COMPRESS TO HC ±15%
SU-1	#5	1/4	.245	.135	.034	.006	.020	2 LBS
SU-2	#6	9/32	.270	.148	.035	.007	.022	2 LBS
SU-3	#8	11/32	.322	.174	.042	.007	.025	3 LBS
SU-4	#10	3/8	.370	.200	.047	.009	.028	4 LBS
SU-5	#12	7/16	.423	.231	.053	.010	.032	5 LBS
SU-6	1/4	1/2	.490	.265	.063	.011	.034	7 LBS
SU-7*	9/32	9/16	.551	.296	.070	.012	.038	8 LBS
SU-8	5/16	5/8	.612	.327	.077	.013	.042	9 LBS
SU-9*	11/32	11/16	.672	.363	.081	.015	.047	11 LBS
SU-10	3/8	3/4	.735	.395	.086	.016	.050	12 LBS
SU-11*	7/16	7/8	.857	.462	.100	.018	.057	15 LBS
SU-12	1/2	1	.980	.525	.110	.021	.063	20 LBS

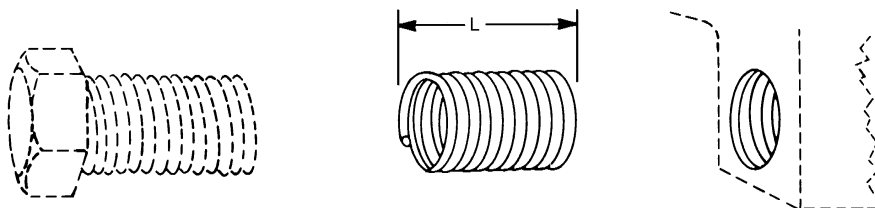


† I.D. Based in long axis providing free fit on normal screw.

Sold in packages of 10.

THREAD INSERTS

THREAD SIZE	TYPE	MATERIAL
#2-56 TO 1/4-20	FREE RUNNING OR LOCKING	STAINLESS STEEL



FREE RUNNING STOCK NO.	LOCKING STOCK NO.	THREAD SIZE	LENGTH L
Y12-S2-09	-	#2-56	.086
Y12-S2-13	Y13-S2-13		.129
Y12-S2-17	Y13-S2-17		.172
Y12-S2-22	-		.215
Y12-S4-11	-	#4-40	.112
Y12-S4-17	Y13-S4-17		.168
Y12-S4-22	Y13-S4-22		.224
Y12-S4-28	-		.280
Y12-S6-14	-	#6-32	.138
Y12-S6-21	Y13-S6-21		.207
Y12-S6-28	Y13-S6-28		.276
Y12-S6-35	-		.345
Y12-S8-16	-	#8-32	.164
Y12-S8-25	Y13-S8-25		.246
Y12-S8-33	Y13-S8-33		.328
Y12-S8-41	-		.410
Y12-S10-19	-	#10-24	.190
Y12-S10-29	Y13-S10-29		.285
Y12-S10-38	Y13-S10-38		.380
Y12-S10-48	-		.475
Y12-S11-19	-	#10-32	.190
Y12-S11-29	Y13-S11-29		.285
Y12-S11-38	Y13-S11-38		.380
Y12-S11-48	-		.475
Y12-S12-25	-	#1/4-20	.250
Y12-S12-38	Y13-S12-38		.375
Y12-S12-50	Y13-S12-50		.500
Y12-S12-63	-		.625

- Increased holding power
- Positive locking
- Eliminates stripping, seizing, corrosion
- Long life without thread wear
- Saves space, weight, material
- no more lock nuts, etc.

NOTE: SEE PAGE # F54 FOR DRILL SIZES AND TAPS

Also available

STOCK NO.	DESCRIPTION OF KIT
Y17-4	#4-40 THREAD INSERTS (24), (1) PRODUCTION STYLE INSERTING TOOL, (1) TAP, (1) DRILL BIT
Y17-6	#6-32 THREAD INSERTS (24), (1) PROTOTYPE STYLE INSERTING TOOL, (1) TAP, (1) DRILL BIT
Y17-8	#8-32 THREAD INSERTS (24), (1) PROTOTYPE STYLE INSERTING TOOL, (1) TAP, (1) DRILL BIT
Y17-10	#10-24 THREAD INSERTS (24), (1) PROTOTYPE STYLE INSERTING TOOL, (1) TAP, (1) DRILL BIT
Y17-11	#10-32 THREAD INSERTS (24), (1) PROTOTYPE STYLE INSERTING TOOL, (1) TAP, (1) DRILL BIT
Y17-12	1/4-20 THREAD INSERTS (24), (1) PROTOTYPE STYLE INSERTING TOOL, (1) TAP, (1) DRILL BIT



THREAD INSERT TAPS

THREAD SIZE	TYPE
#2-56 TO 1/4-20	BOTTOMING TAP AND PLUG TAP

BOTTOMING TAP STOCK NO.	PLUG TAP STOCK NO.	INSERT THREAD SIZE	DRILLING DATA		
			DRILL SIZE	HOLE SIZE	
				MIN.	MAX.
Y14-BT2	Y14-PT2	# 2-56	3/32	.0899	.0961
Y14-BT4	Y14-PT4	# 4-40	31	.1175	.1252
Y14-BT6	Y14-PT6	# 6-32	26	.1448	.1527
Y14-BT8	Y14-PT8	# 8-32	17	.1708	.1781
Y14-BT10	Y14-PT10	# 10-24	13/64	.1990	.2080
Y14-BT11	Y14-PT11	# 10-32	7	.1968	.2041
Y14-BT12	Y14-PT12	1/4-20	17/64	.2608	.2704



Taps can be used for limited production in steel by drilling to maximum tap hole size.

THREAD INSERT TOOL

THREAD SIZE	TYPE
#2-56 TO 1/4-20	PRODUCTION TOOL AND PROTOTYPE TOOL

PRODUCTION TOOL STOCK NO.	PROTOTYPE TOOL STOCK NO.	THREAD SIZE
Y15-P2	-	#2-56
Y15-P4	-	#4-40
Y15-P6	Y15-T6	#6-32
Y15-P8	Y15-T8	#8-32
Y15-P10	Y15-T10	#10-24
Y15-P11	Y15-T11	#10-32
Y15-P12	Y15-T12	1/4-20



Taps can be used for limited production in steel by drilling to maximum tap hole size.

TANG BREAK-OFF TOOL

THREAD SIZE
#2-56 TO 1/4-20



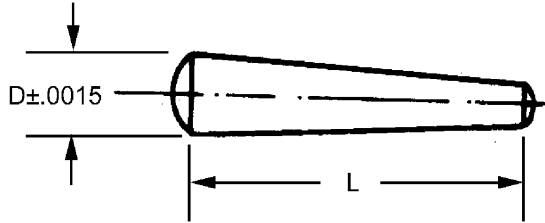
STOCK NO.	THREAD SIZE
Y16-T2	# 2-56
Y16-T4	# 4-40
Y16-T6	# 6-32
Y16-T8	# 8-32
Y16-T10	#10-24 10-32
Y16-T12	1/4-20

Remove tang to avoid interference with the screw.



PINS

TYPE	MATERIALS
TAPER ANSI-B18.2-1978 (R1995)	303 STAINLESS STEEL



STOCK NO.	TAPER PIN NO.	D	L
CP3-20*	#9/0	.031	1/4
CP3-22*			3/8
CP3-21*	#8/0	.047	1/4
CP3-1*			3/8
CP3-2*			1/2
CP3-24	#7/0	.0625	3/8
CP3-3			7/16
CP3-4			1/2
CP3-25			9/16
CP3-26			5/8
CP3-27			7/16
CP3-5	#6/0	.078	1/2
CP3-6			9/16
CP3-28			5/8
CP3-29			3/4
CP3-7			9/16
CP3-8	#5/0	.094	5/8
CP3-32			3/4
CP3-33			7/8
CP3-34			5/8
CP3-35	#4/0	.109	3/4
CP3-36			7/8
CP3-37			1
CP3-9			5/8
CP3-10	#3/0	.125	3/4
CP3-38			7/8
CP3-39			1
CP3-11			3/4
CP3-40	#2/0	.141	7/8
CP3-12			1
CP3-41			1 1/4

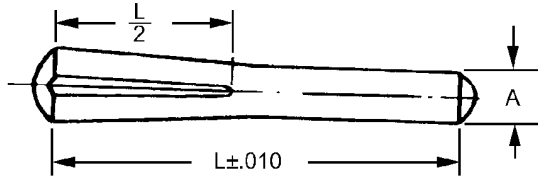
* ANSI B18.8.2-1978 (R1989) Does not apply.
Taper 1/4" per foot
Sold in packages of 10.

Also available

STOCK NO.	DESCRIPTION OF KIT
KIT-CP3	ASSORTED TAPER PIN KIT 240 PIECES

PINS

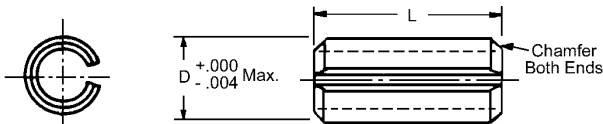
TYPE	MATERIALS
GROOVED HALF LENGTH TYPE B ANSI-B18.2-1978 (R1995)	303 STAINLESS STEEL



STOCK NO.	A	L	DRILL SIZE
CP4-1	.0469 +.0000 -.0010	3/8	3/64
CP4-2		1/2	
CP4-17		5/8	
CP4-3	.0625 +.0000 -.0010	3/8	1/16
CP4-4		1/2	
CP4-18		5/8	
CP4-5	.0781 +.0000 -.0010	3/8	5/64
CP4-6		1/2	
CP4-22		5/8	
CP4-7	.0938 +.0000 -.0010	3/8	3/32
CP4-8		1/2	
CP4-23	.0938 +.0000 -.0010	5/8	3/32
CP4-24		3/4	
CP4-25	.1250 +.0000 -.0020	1/2	1/8
CP4-9		5/8	
CP4-10		3/4	
CP4-26		1	
CP4-27	.1563 +.0000 -.0020	1/2	5/32
CP4-28		5/8	
CP4-11		3/4	
CP4-12		1	

Other sizes available on request.
Sold in packages of 10.

TYPE	MATERIALS
ROLL OR SPRING	420 STAINLESS STEEL



STOCK NO.	D	L (Inch)	DRILL SIZE	REF. SHAFT DIA.
CP5-2	.069	1/4	1/16	3/16
CP5-21		5/16		
CP5-3		3/8		
CP5-12		7/16		
CP5-10		1/2		
CP5-22	.086	9/16	5/64	1/4
CP5-23		5/8		
CP5-4	.103	9/16	3/32	1/4
CP5-24		3/8		
CP5-25	.103	7/16	3/32	1/4
CP5-26		1/2		
CP5-5	.135	5/8	1/8	3/8
CP5-13		3/8		
CP5-14		7/16		
CP5-15		1/2		
CP5-16		9/16		
CP5-17		5/8		
CP5-18	.167	11/16	5/32	1/2
CP5-6		3/4		
CP5-7		1		

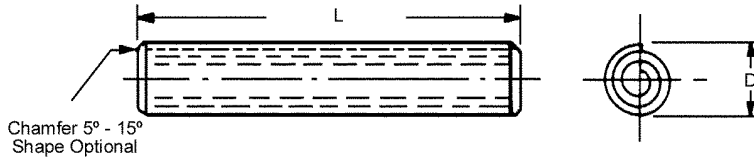


Sold in packages of 10.

F

PINS

TYPE	MATERIALS
SPIRAL STANDARD DUTY	302 STAINLESS STEEL



STOCK NO.	D	L	DRILL SIZE	(Ref.) SHAFT
CP6-17	.033	1/8	.031	3/32
CP6-18		3/16		
CP6-19		1/4		
CP6-20		5/16		
CP6-21		3/8		
CP6-23	.041	1/4	.039	1/8
CP6-24		5/16		
CP6-10		3/8		
CP6-25		7/16		
CP6-11	1/2			
CP6-26	.049	3/16	.047	1/8
CP6-27		1/4		
CP6-1		5/16		
CP6-29		3/8		
CP6-30		7/16		
CP6-31	1/2			
CP6-32	.054	3/16	.051	1/8
CP6-33		1/4		
CP6-34		5/16		
CP6-35		3/8		
CP6-36		7/16		
CP6-37	1/2			
CP6-38	.067	1/4	.061	3/16
CP6-39		5/16		
CP6-12		3/8		
CP6-2		7/16		
CP6-13		1/2		
CP6-41		9/16		
CP6-42	5/8			
CP6-3	.083	1/2	.077	1/4
CP6-43	.099	3/8	.093	1/4 & 5/16
CP6-44		7/16		
CP6-4		1/2		
CP6-15		9/16		
CP6-45		5/8		
CP6-46	11/16			
CP6-5	.114	3/4	.108	3/8
CP6-47	.124	3/8	.124	3/8 7/16 & 1/2
CP6-48		7/16		
CP6-49		1/2		
CP6-50		9/16		
CP6-51		5/8		
CP6-52		11/16		
CP6-53	3/4			
CP6-6		1		



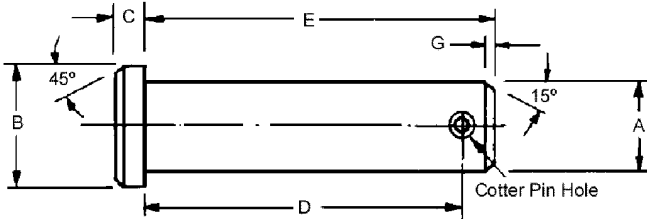
Sold in packages of 10.

Also available

STOCK NO.	DESCRIPTION OF KIT
KIT-CP5	ASSORTED SIZES ROLL, TAPER, & DOWEL PINS - 530 PIECES

PINS

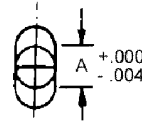
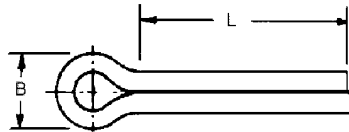
TYPE	MATERIALS
CLEVIS ANSI-B18-8.1-1972 (R 1983)	416 STAINLESS STEEL HARDENED ROCKWELL C28-32



STOCK NO.	A +.000 -.005	B	C	D +.000 -.020	E +.020 +.000	G	COTTER PIN HOLE H
CP2-1	.186	5/16	1/16	.504	19/32	3/64	5/64
CP2-2	.248	3/8	3/32	.692	51/64	3/64	5/64
CP2-3	.311	7/16	3/32	.832	31/32	1/16	7/64
CP2-4	.373	1/2	1/8	.958	1 1/16	1/16	7/64
CP2-5	.436	9/16	5/32	1.082	1 15/64	1/16	7/64
CP2-6	.496	5/8	5/32	1.223	1 27/64	5/64	9/64



TYPE	MATERIALS
COTTER ANSI-B18-8.1-1972 (R 1983)	STAINLESS STEEL



STOCK NO.	A	B MIN.	L (Inch)	HOLE SIZE
CP1-31	.032	1/16	3/8	3/64
CP1-32			1/2	
CP1-1			3/4	
CP1-34			1	
CP1-2	.048	3/32	1	1/16
CP1-35	.060	1/8	3/8	5/64
CP1-36			1/2	
CP1-37			3/4	
CP1-3			1	
CP1-9			1 1/2	
CP1-4	.076	5/32	1 1/4	3/32
CP1-10	.090	3/16	1/2	7/64
CP1-11			3/4	
CP1-12			1	
CP1-5			1 1/2	
CP1-14	.120	1/4	1/2	9/64
CP1-15			3/4	
CP1-16			1	
CP1-17			1 1/2	
CP1-7			2	
CP1-19	.150	5/16	3/4	11/64
CP1-20			1	
CP1-21			1 1/2	
CP1-22			2	
CP1-23	.176	3/8	1	13/64
CP1-24			1 1/2	
CP1-25			2	
CP1-26			2 1/2	
CP1-27	.225*	1/2	1 1/2	17/64
CP1-28			2	
CP1-29			2 1/2	

* Tolerance is +.000/-.005

SOLD IN PACKAGES OF 10.

Also available

STOCK NO.	DESCRIPTION OF KIT
KIT-CP1	COTTER PIN KIT, ASSORTED SIZES 3/8" TO 2" (280 PIECES)

PINS

TYPE	DIAMETER SIZE	MATERIALS
DOWEL SOFT PINS	1/32 TO 5/32	303 STAINLESS STEEL (NOT HARDENED)

DIAMETER = d						B
(1/32") .0312 STOCK NO.	(1/16") .0625 STOCK NO.	(5/64") .0780 STOCK NO.	(3/32") .0937 STOCK NO.	(1/8") .1250 STOCK NO.	(5/32") .1561 STOCK NO.	
D11-1	D12-1	D18-1	D13-1	D14-1	-	3/32
D11-2	D12-2	D18-2	D13-2	D14-2	-	1/8
D11-3	D12-3	D18-3	D13-3	D14-3	-	5/32
D11-4	D12-4	D18-4	D13-4	D14-4	D15-4	3/16
D11-5	D12-5	-	D13-5	D14-5	-	7/32
D11-6	D12-6	D18-6	D13-6	D14-6	D15-6	1/4
D11-7	D12-7	D18-7	D13-7	D14-7	D15-7	5/16
D11-8	D12-8	D18-8	D13-8	D14-8	D15-8	3/8
D11-9	D12-9	-	D13-9	D14-9	D15-9	7/16
D11-10	D12-10	-	D13-10	D14-10	D15-10	1/2
D11-11	D12-11	-	D13-11	D14-11	D15-11	5/8
D11-12	D12-12	-	D13-12	D14-12	-	3/4
D11-13	D12-13	-	D13-13	D14-13	-	7/8
D11-14	D12-14	-	D13-14	D14-14	-	1

Sold in packages of 10.

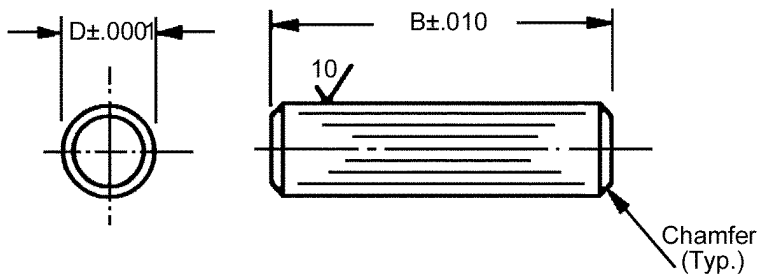
TYPE	DIAMETER SIZE	MATERIALS
DOWEL SOFT PINS	3/16 TO 1/2	303 STAINLESS STEEL (NOT HARDENED)

DIAMETER = d						B
(3/16") .1874 STOCK NO.	(7/32") .2186 STOCK NO.	(1/4") .2499 STOCK NO.	(5/16") .3124 STOCK NO.	(3/8") .3749 STOCK NO.	(1/2") .4999 STOCK NO.	
D16-6	-	-	-	-	-	1/4
D16-7	D19-7	-	-	-	-	5/16
D16-8	D19-8	D17-8	-	-	-	3/8
D16-9	D19-9	D17-9	D20-9	-	-	7/16
D16-10	D19-10	D17-10	D20-10	-	-	1/2
-	-	D17-20	D20-20	D21-20	-	9/16
D16-11	D19-11	D17-11	D20-11	D21-11	-	5/8
D16-12	D19-12	D17-12	D20-12	D21-12	D22-12	3/4
D16-13	D19-13	D17-13	D20-13	D21-13	D22-13	7/8
D16-14	D19-14	D17-14	D20-14	D21-14	D22-14	1
-	-	-	D20-15	D21-15	D22-15	1 1/4
-	-	-	-	D21-16	D22-16	1 1/2
-	-	-	-	-	D22-17	1 3/4
-	-	-	-	-	D22-18	2

Sold in packages of 10.

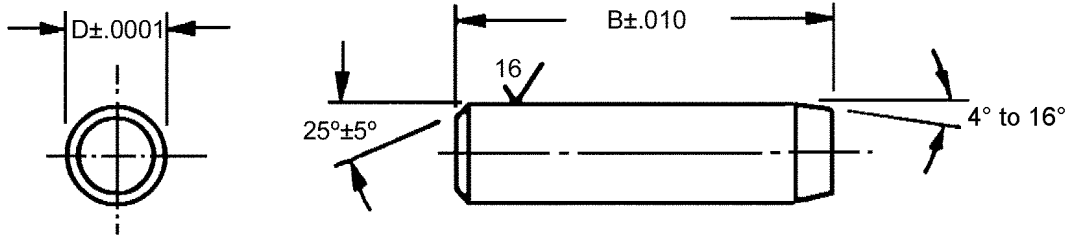
Also available

STOCK NO.	DESCRIPTION OF KIT
KIT-D11	DOWEL PIN KIT, ASSORTED SIZES 1/32" TO 1/4" DIA. (135 PIECES)



PINS

TYPE	DIAMETER SIZE	MATERIALS
DOWEL	1/16" TO 3/8"	416 STAINLESS STEEL ROCKWELL C36-42



Conforms to Mil. Standard MS16555.

DIAMETER = d								B
(1/16") .0627 STOCK NO.	(3/32") .0940 STOCK NO.	(1/8") .1252 STOCK NO.	(5/32") .1564 STOCK NO.	(3/16") .1877 STOCK NO.	(1/4") .2502 STOCK NO.	(5/16") .3127 STOCK NO.	(3/8") .3752 STOCK NO.	
D23-1	D24-1	-	-	-	-	-	-	3/16
D23-2	D24-2	D25-2	-	-	-	-	-	1/4
D23-15	D24-15	D25-15	-	-	-	-	-	5/16
D23-3	D24-3	D25-3	D26-3	D27-3	-	-	-	3/8
D23-17	D24-17	D25-17	D26-17	-	-	-	-	7/16
D23-4	D24-4	D25-4	D26-4	D27-4	D28-4	-	-	1/2
D23-5	D24-5	D25-5	D26-5	D27-5	D28-5	D29-5	-	5/8
D23-6	D24-6	D25-6	D26-6	D27-6	D28-6	D29-6	D30-6	3/4
D23-7	D24-7	D25-7	D26-7	-	-	-	-	7/8
D23-8	D24-8	D25-8	D26-8	D27-8	D28-8	D29-8	D30-8	1"
-	-	-	-	D27-9	D28-9	D29-9	D30-9	1-1/4
-	-	-	-	-	D28-10	D29-10	D30-10	1-1/2



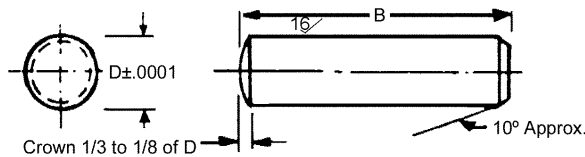
Sold in packages of 10.

F

Also available

STOCK NO.	DESCRIPTION OF KIT
KIT-D23	DOWEL PIN KIT, ASSORTED SIZES 1/16" TO 3/8" DIA. (135 PIECES)

TYPE	DIAMETER SIZE	MATERIALS
DOWEL	1/16" TO 3/8"	CARBON STEEL CARBONIZED ROCKWELL C58-62 CASE DEPTH .010 TO .020



D=.0627 STOCK NO.	D=.0940 STOCK NO.	D=.1252 STOCK NO.	D=.1877 STOCK NO.	D=.2502 STOCK NO.	D=.3127 STOCK NO.	D=.3752 STOCK NO.	B (Inch)
D1-1	-	-	-	-	-	-	3/16
D1-2	D2-2	-	-	-	-	-	1/4
D1-3	D2-3	D3-3	-	-	-	-	3/8
D1-4	D2-4	D3-4	D4-4	D5-4	D6-4	D7-4	1/2
D1-5	D2-5	D3-5	D4-5	D5-5	D6-5	D7-5	5/8
D1-6	D2-6	D3-6	D4-6	D5-6	D6-6	D7-6	3/4
D1-7	D2-7	D3-7	D4-7	D5-7	D6-7	D7-7	7/8
D1-8	D2-8	D3-8	D4-8	D5-8	D6-8	D7-8	1
-	-	D3-9	D4-9	D5-9	D6-9	D7-9	1 1/4
-	D2-10	D3-10	D4-10	D5-10	D6-10	D7-10	1 1/2

Sold in packages of 10.



TAPER PIN AND DOWEL PIN REAMERS

MATERIAL

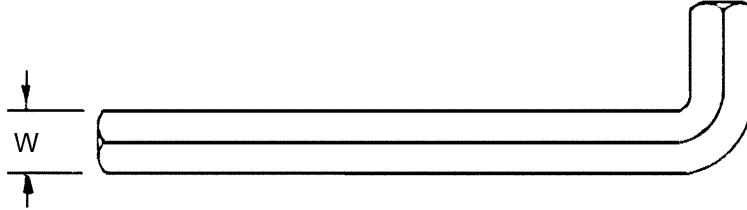
HIGH SPEED STEEL

TAPER PIN REAMERS (SPIRAL) HIGH SPEED STEEL	
STOCK NO.	SIZE
TR-24	#9/0
TR-1	8/0
TR-2	7/0
TR-25	6/0
TR-3	5/0
TR-26	4/0
TR-27	3/0
TR-28	2/0

DOWEL PIN REAMERS (STRAIGHT) HIGH SPEED STEEL	
STOCK NO.	SIZE
TR-4	1/32" DIA. (.0312)
TR-5	1/16" DIA. (.0625)
TR-6	3/32" DIA. (.0937)
TR-7	1/8" DIA. (.1250)
TR-29	5/32" DIA. (.1562)
TR-30	3/16" DIA. (.1875)
TR-31	1/4" DIA. (.2500)
TR-32	5/16" DIA. (.3125)
TR-33	3/8" DIA. (.3750)

HEX WRENCH

SET SCREW SIZE	MATERIALS
#0 TO 1/2	ALLOY STEEL



STOCK NO.	W ACROSS FLATS	CAP SCREW SIZE	SET SCREW SIZE
SC9-10	.028	-	#0
SC9-1	.035	-	#1 & 2
SC9-2	.050	#0	#3 & 4
SC9-3	1/16	#1	#5 & 6
SC9-4	5/64	#2 & 3	#8
SC9-5	3/32	#4 & 5	#10
SC9-11	7/64	#6	-
SC9-6	1/8	-	1/4
SC9-12	9/64	#8	-
SC9-7	5/32	#10	5/16
SC9-8	3/16	1/4	3/8
SC9-13	7/32	-	7/16
SC9-9	1/4	5/16	1/2
SC9-14	5/16	3/8	5/8
SC9-15	3/8	1/2	3/4

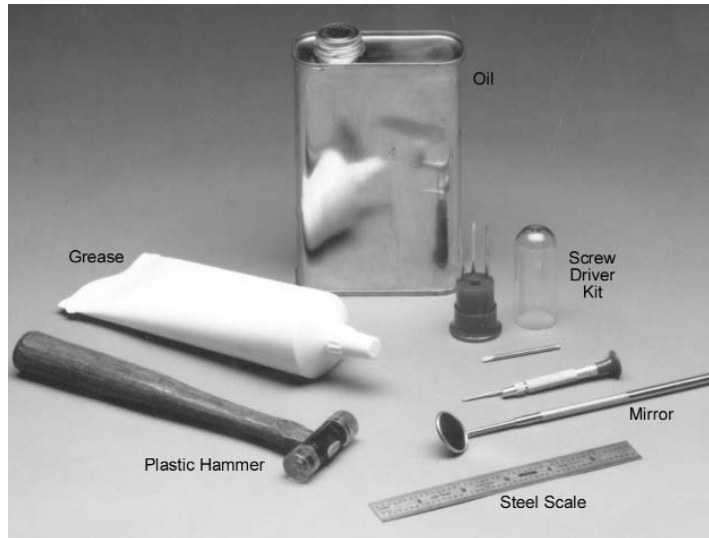


Also available

STOCK NO.	DESCRIPTION OF KIT
TR-35	HEX KEY SET WITH PLASTIC CASE - 8 KEYS (.050 TO 5/32")

F

MISCELLANEOUS ITEMS



STOCK NO.	ITEM	DESCRIPTION
TR-8 TR-34	GREASE	INSTRUMENT (-65°F TO +250°F) RECOMMENDED FOR GEAR MESHES & BALL BEARINGS. -MIL-G-23827 (-65°F TO +250°F) RECOMMENDED FOR GEAR MESHES & BALL BEARINGS
TR-9	OIL	-MIL-L-6085 (-65°F TO +250°F) RECOMMENDED FOR ALL PRECISION APPLICATIONS
TR-18 TR-19	INSP & ASSEMBLY MIRROR	3/4" DIAMETER MIRROR WITH HANDLE 3/4" DIAMETER MAGNIFYING MIRROR WITH HANDLE
TR-20	INSTR. SCREW DRIVERS	SET OF ASSTD. SMALL PRECISION INSTR. SCREW DRIVER IN PLASTIC CASE AND COVER
TR-21	PLASTIC HAMMER	INSTR. STYLE TO PREVENT MARKING FACES OF WORKING SURFACE
TR-22	STEEL SCALE	6" STAINLESS STEEL 1/32 & 1/64 GRAD'S WITH DECIMAL CHART

MISCELLANEOUS ITEMS

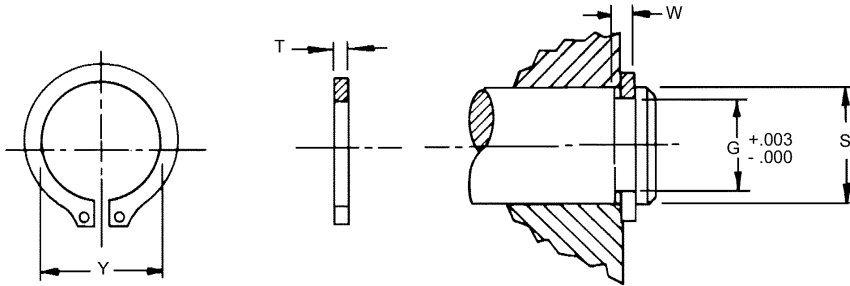


STOCK NO.	ITEM	DESCRIPTION
TR-35	HEX WRENCHES	PLASTIC CASE WITH 8 KEYS (.050 TO 5/32")
TR-23	TWEEZERS	STAINLESS STEEL FOR INSTR. PARTS HANDLING
TR-36	LOUPE	2.5 INCHES - 4X
TL-1	CABLE CUTTERS	CUTTER FOR UP TO 3/64" CABLE
TL-2	CABLE CUTTERS	CUTTER FOR UP TO 5/64" CABLE
CE-1	ADHESIVE	1 OZ. BOTTLE USE WHEN METAL IS ONE OR BOTH OF THE BONDED PARTS
CE-3		1 OZ. BOTTLE USE WHEN PLASTIC, RUBBER, CERAMIC OR GLASS IS TO BE BONDED
CE-24		1/3 OZ. CONTAINER
CE-6	LIQUID PIN	50 cc BOTTLE
CE-7		250 cc BOTTLE
CE-28	SOLVENT	12 OZ. CLEANER-SOLVENT SPRAY CAN
CE-10	LUBRICANT 12 OZ. CAN	SILICONE LUBRICANT & RELEASE AGENT NON TOXIC, NON FLAMMABLE & FOOD GRADE
CE-12	LUBRICANT 12 OZ. CAN	DRY LUBRICANT & ANTI STICK AGENT SLICK ACTION, CONTAINS NO OIL, NO GREASE, & NO SILICONE
CE-14	LUBRICANT 16 OZ. CAN	RUST INHIBITING LUBRICANT & PENETRANT ACTION LUBE, DISPLACES WATER, CLEANS AND PROTECTS
CE-16		INSTANT CLEANER & DEGREASER FOR CONTACTS, SWITCHES ETC. MAYBE APPLIED TO EQUIPMENT WHILE IN OPERATION



RETAINER RINGS

TYPE	MATERIALS
EXTERNAL LUG DESIGN	STAINLESS STEEL PH 15-7 MO (SS), CARBON STEEL PLATED (CP), BERYLLIUM COPPER (BC)



Retainer Ring Pliers. Order separately.

STOCK NO.	S SHAFT SIZE	G GROOVE DIA.	W GROOVE WIDTH	T	MATERIAL	Y RING I.D.	PLIERS
Q2-12	1/8	.117	.012	.010	BC	.112	S11-12P
Q2-15	5/32 & 4mm	.146	.012 +.002	.010	BC	.142	S11-12P
Q2-18	3/16	.175	.018 -.000	.015	BC	.168	S11-18P
Q2-23	6mm	.222	.018	.015	BC	.215	S11-18P
Q2-25	1/4	.230	.029	.025	SS	.225	S11-25P
Q2-31	5/16 & 8mm	.290	.029	.025	SS	.281	S11-25P
Q2-34	11/32	.321	.029	.025	SS	.309	S11-25P
Q2-37	3/8	.352	.029	.025	SS	.338	S11-25P
Q2-39	10mm	.369	.029	.025	SS	.354	S11-25P
Q2-50	1/2	.468	.039 +.003	.035	SS	.461	S11-25P
Q2-50-CP	1/2	.468	.039 -.000	.035 ±.002	CP	.461	S11-25P
Q2-62-P	5/8 & 16mm	.588	.039	.035	SS	.579	S11-25P
Q2-62-CP	5/8 & 16mm	.588	.039	.035	CP	.579	S11-25P
Q2-75	3/4 & 19mm	.704	.046	.042	SS	.693	S11-25P
Q2-87	7/8	.821	.046	.042	SS	.810	S11-25P
Q2-87-CP	7/8	.821	.046	.042	CP	.810	S11-25P
Q2-100	1	.940	.046	.042	SS	.925	S11-100P
Q2-112	1 1/8	1.059	.056	.050	SS	1.041	S11-100P
Q2-112-CP	1 1/8	1.059	.056	.050	CP	1.041	S11-100P
Q2-125	1 1/4 & 32mm	1.176	.056 +.004	.050	SS	1.156	S11-100P
Q2-125-CP	1 1/4 & 32mm	1.176	.056 -.000	.050	CP	1.156	S11-100P
Q2-156	1 9/16	1.468	.068	.062	SS	1.446	-
Q2-156-CP	1 9/16	1.468	.068	.062	CP	1.446	-
Q2-200-CP	2	1.886	.068	.062 ±.003	CP	1.850	-
Q2-237-CP	2 3/8	2.239	.086 +.005	.078	CP	2.197	-
Q2-300-CP	3	2.838	.103 -.000	.093	CP	2.775	-



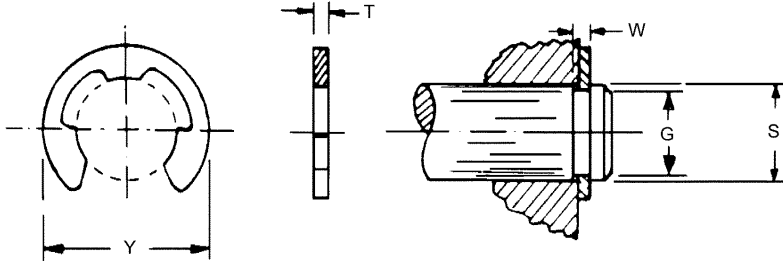
Sold in packages of 10.

Also available

STOCK NO.	DESCRIPTION OF KIT
KIT-Q2	RETAINER RINGS, STAINLESS STEEL, INTERNAL AND EXTERNAL, 1/8", 3/16" AND 1/4" SHAFTS (450 PIECES)

RETAINER RINGS

TYPE	MATERIALS
EXTERNAL SNAP ON DESIGN	STAINLESS STEEL PH 15-7 MO



Retainer Ring Pliers. Order separately.

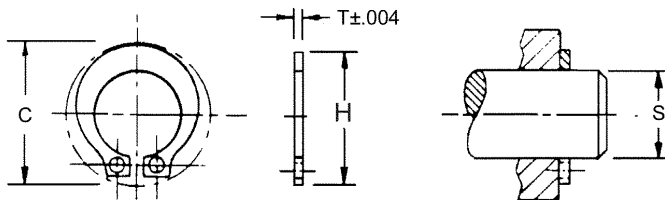
STOCK NO.	SHAFT SIZE S	GROOVE DIA. G	GROOVE WIDTH W	T RING THICKNESS	O.D. RING Y	APPLICATOR TOOL NO.
Q1-6	5/64 & 1/16	.052	.012	.010	.14	S10-6T
Q1-9	3/32	.074 +0.002	.018	.015	.19	S10-9T
Q1-12	1/8	.095 -.0000	.018	.015	.23	S10-12T
Q1-15	5/32 & 4mm	.116	.029	.025	.29	-
Q1-18	3/16	.147	.029	.025	.34	S10-18T
Q1-25	1/4	.210	.029	.025	.53	S10-25T
Q1-31	5/16 & 8mm	.250	.029	.025	.50	S10-31T
Q1-37	3/8	.303	.039	.035	.66	S10-37T
Q1-43	7/16 & 11mm	.343	.039	.035	.69	-
Q1-50	1/2	.396 +003	.046	.044	.80	S10-50T
Q1-62	5/8 & 16mm	.485 -.000	.046	.044	.94	S10-62T
Q1-75	3/4 & 19mm	.580	.056	.050	1.12	S10-75T
Q1-87	7/8	.675	.056	.050	1.30	S10-87T
Q1-98	1	.835	.056	.050	1.50	S10-98T



Sold in packages of 10.

F

TYPE	MATERIALS
EXTERNAL POWER GRIP DESIGN	STAINLESS STEEL PH 15-7 MO AMS 5520



Retainer Ring Pliers. Order separately.

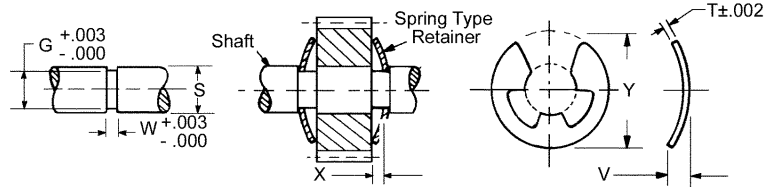
STOCK NO.	SHAFT SIZE S	T RING THICKNESS	H RING HEIGHT	CLEARANCE DIA. C	ASSEMBLY PLIER STOCK NO.
Q7-12	1/8	.025	.268	.33	S14-12P
Q7-15	5/32 & 4mm	.025	.307	.36	
Q7-18	3/16	.035	.364	.44	S14-25P
Q7-25	1/4	.035	.437	.49	
Q7-31	5/16 & 8mm	.042	.553	.68	S14-37P
Q7-37	3/8	.042	.620	.74	
Q7-43	7/16 & 11mm	.050	.701	.81	
Q7-50	1/2	.050	.768	.90	
Q7-62	5/8 & 16mm	.062	.948	1.06	
Q7-75	3/4 & 19mm	.062	1.115	1.32	



Sold in packages of 10.

RETAINER RINGS

TYPE	MATERIALS
EXTERNAL BOWED SNAP ON DESIGN	STAINLESS STEEL PH 15-7 MO

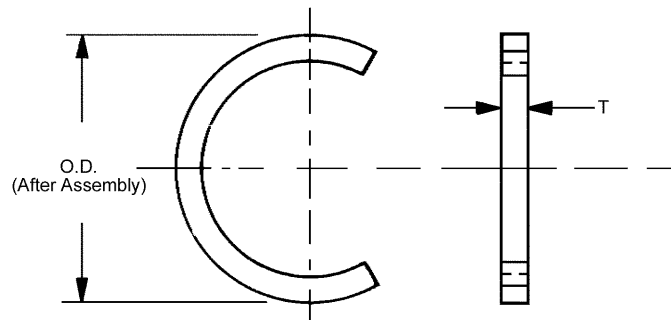


STOCK NO.	S SHAFT SIZE	Y	T	V	X MAX. TAKE UP	W	G
Q3-12	1/8	.230	.010	.025	.013	.022	.095
Q3-18	3/16	.335	.015	.033	.015	.030	.147
Q3-25	1/4	.527	.025	.052	.024	.049	.210
Q3-31	5/16 & 8mm	.500	.025	.050	.022	.047	.250
Q3-37	3/8	.660	.035	.060	.022	.060	.303
Q3-50	1/2	.800	.042	.075	.030	.073	.396
Q3-62	5/8 & 16mm	.940	.042	.080	.035	.077	.485
Q3-75	3/4 & 19mm	1.000	.050	.088	.035	.085	.625
Q3-98	1	1.500	.050	.088	.035	.085	.835



Sold in packages of 10.

TYPE	MATERIALS
EXTERNAL DESIGN	CARBON STEEL OR STAINLESS STEEL



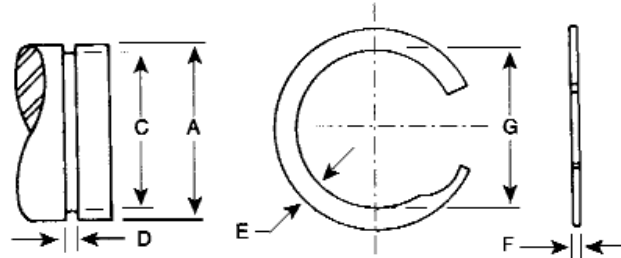
CARBON STEEL STOCK NO.	STAINLESS STEEL STOCK NO.	SHAFT SIZE	O.D.	T	GROOVE DIMENSIONS	
					WIDTH +.005 -.000	DIAMETER +.005 -.000
Q5-50-CP	Q5-50	1/2	.550	.035	.039	.468
Q5-62-CP	Q5-62	5/8	.673	.035	.039	.588
Q5-87-CP	Q5-87	7/8	.923	.042	.046	.821
Q5-112-CP	Q5-112	1 1/8	1.180	.050	.056	1.061
Q5-125-CP	Q5-125	1 1/4	1.301	.050	.056	1.176
Q5-156-CP	Q5-156	1 9/16	1.620	.062	.068	1.468
Q5-200-CP	-	2	2.040	.062	.068	1.886
Q5-237-CP	-	2 3/8	2.429	.078	.086	2.239



Sold in packages of 10.

RETAINER RINGS

TYPE	MATERIALS
INTERNAL	302 STAINLESS STEEL



STOCK NO.	A HOUSING DIA.		C GROOVE DIA.	D GROOVE WIDTH	F RING THICKNESS	G RING OUTER DIA.	E RADIAL WALL	THRUST LOAD BASED ON RING SHEAR	THRUST LOAD BASED ON GROOVE YIELD (45,000 P.S.I.)	MAX. CORNER RADIUS OR CHAMFER		WEIGHT lbs./M		
	INCHES	MM.								*X	*CH			
Q9-50	.500	12.7	.526	.030 +.003 -.000	.025 ±.002	.532	.045	2,000	405	.015	.012	.41		
Q9-51	.512	13.0	.538					2,050	420			.42		
Q9-53	.531	13.5	.557					2,130	455			.44		
Q9-56	.562	14.3	.588					2,250	495			.46		
Q9-59	.594	15.1	.619					2,380	535			.49		
Q9-62	.625	15.9	.651 ±.002					2,500	610			.52		
Q9-65	.656	16.7	.682					2,630	670			.55		
Q9-68	.687	17.5	.713					2,750	725			.58		
Q9-71	.718	18.3	.744					2,870	790			.61		
Q9-75	.750	19.0	.782					3,360	800			1.14		
Q9-77	.777	19.7	.808	3,480	835	.024	.019	1.19						
Q9-78	.781	19.8	.812	.036 +.003 -.000	.031 ±.002	.821	.065	3,500	840	.022	.018	1.20		
Q9-81	.812	20.6	.843					.853 +.013 -.000	915			1.25		
Q9-84	.843	21.4	.880					3,780	1,155			1.32		
Q9-86	.866	22.0	.903					3,880	1,250			1.35		
Q9-87	.875	22.2	.912 ±.003					3,920	1,250			1.36		
Q9-90	.906	22.9	.939					4,060	1,335			1.41		
Q9-93	.938	23.8	.975					4,200	1,430			1.48		
Q9-96	.968	24.4	1.015					4,340	1,950			.025	.020	2.11
Q9-98	.987	25.0	1.030					4,420	1,865			.026	.021	2.15
Q9-100	1.000	25.4	1.043					4,480	1,910					2.19

*For calculation of Groove Yield.

TYPE	MATERIALS
EXTERNAL	302 STAINLESS STEEL

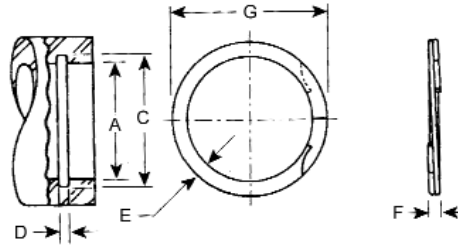
STOCK NO.	A HOUSING DIA.		C GROOVE DIA.	D GROOVE WIDTH	F RING THICKNESS	G RING OUTER DIA.	E RADIAL WALL	THRUST LOAD BASED ON RING SHEAR	THRUST LOAD BASED ON GROOVE YIELD (45,000 P.S.I.)	MAX. CORNER RADIUS OR CHAMFER		WEIGHT lbs./M		
	INCHES	MM.								*X	*CH			
Q11-50	.500	12.7	.474	.030 +.003 -.000	.025 ±.002	.467	.045	2,000	550	.015	.012	.44		
Q11-53	.531	13.5	.505 ±.002					2,130	640			.48		
Q11-55	.551	14.0	.525					2,210	700			.50		
Q11-56	.532	14.3	.536					2,250	730			.51		
Q11-59	.594	15.1	.569					2,380	740			.54		
Q11-62	.625	15.9	.594					2,500	970			.70		
Q11-65	.656	16.7	.625					2,630	1,020			.74		
Q11-66	.669	17.0	.638					2,680	1,040			.75		
Q11-68	.687	17.5	.656					2,750	1,060			.77		
Q11-71	.718	18.3	.687					2,870	1,110			.81		
Q11-75	.750	19.0	.719	.036 +.003 -.000	.031 ±.002	.710 +.000 -.013	.065	3,360	1,100	.024	.019	1.27		
Q11-78	.781	19.8	.750 ±.003					3,500	1,210			1.32		
Q11-81	.812	20.6	.781					3,640	1,260			1.38		
Q11-84	.843	21.4	.812					3,780	1,310			1.43		
Q11-87	.875	22.2	.838					3,920	1,620			1.48		
Q11-90	.906	23.0	.869					4,060	1,680			1.53		
Q11-93	.937	23.8	.900					4,200	1,740			1.57		
Q11-96	.968	24.4	.925					5,180	2,080			2.26		
Q11-98	.984	25.0	.941					5,260	2,120			.026	.021	2.31
Q11-100	1.000	25.4	.957					5,350	2,150			2.34		

*For calculation of Groove Yield.



RETAINER RINGS

TYPE	MATERIALS
INTERNAL	CARBON SPRING STEEL WITH OIL-DIP FINISH



STOCK NO.	A HOUSING DIA.		C GROOVE DIA.	D GROOVE WIDTH	F RING THICKNESS	G RING OUTER DIA.	E RADIAL WALL	THRUST LOAD BASED ON RING SHEAR	THRUST LOAD BASED ON GROOVE YIELD (45,000 P.S.I.)	MAX. CORNER RADIUS OR CHAMFER		WEIGHT lbs./M
	INCHES	MM.								*X	*CH	
Q9-50C	.500	12.7	.526	.030 +.003 -.000	.025 ±.002	.532	.045	2,000	405	.015	.012	.41
Q9-51C	.512	13.0	.538			.544		2,050	420			.42
Q9-53C	.531	13.5	.557			.564		2,130	455			.44
Q9-56C	.562	14.3	.588			.594		2,250	495			.46
Q9-59C	.594	15.1	.619			.626		2,380	535			.49
Q9-62C	.625	15.9	.651 ±.002			.658		2,500	610			.52
Q9-65C	.656	16.7	.682			.689		2,630	670			.55
Q9-68C	.687	17.5	.713			.720		2,750	725			.58
Q9-71C	.718	18.3	.744			.751		2,870	790			.61
Q9-75C	.750	19.0	.782			.790		3,360	800			1.14
Q9-77C	.777	19.7	.808	.817	3,480	835	.024	.019	1.19			
Q9-78C	.781	19.8	.812	.036 +.003 -.000	.031 ±.002	.821	.065	3,500	840	.022	.018	1.20
Q9-81C	.812	20.6	.843			.853 +.013 -.000		3,640	915			1.25
Q9-84C	.843	21.4	.880	.889	3,780	1,155	.025	.021	1.32			
Q9-86C	.866	22.0	.903	.913	3,880	1,250			1.35			
Q9-87C	.875	22.2	.912 ±.003	.922	3,920	1,250	.026	.021	1.36			
Q9-90C	.906	22.9	.939	.949	4,060	1,335			1.41			
Q9-93C	.938	23.8	.975	.986	4,200	1,430	1.48					
Q9-96C	.968	24.4	1.015	1.025	4,340	1,950	.026	.021	2.11			
Q9-98C	.987	25.0	1.030	1.041	4,420	1,865			2.15			
Q9-100C	1.000	25.4	1.043	1.054	4,480	1,910			2.19			

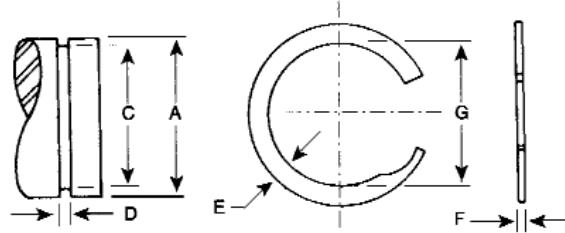
*For calculation of Groove Yield.

TYPE	MATERIALS
EXTERNAL	CARBON SPRING STEEL WITH OIL-DIP FINISH

STOCK NO.	A HOUSING DIA.		C GROOVE DIA.	D GROOVE WIDTH	F RING THICKNESS	G RING OUTER DIA.	E RADIAL WALL	THRUST LOAD BASED ON RING SHEAR	THRUST LOAD BASED ON GROOVE YIELD (45,000 P.S.I.)	MAX. CORNER RADIUS OR CHAMFER		WEIGHT lbs./M		
	INCHES	MM.								*X	*CH			
Q11-50C	.500	12.7	.474	.030 +.003 -.000	.025 ±.002	.467	.045	2,000	550	.015	.012	.44		
Q11-53C	.531	13.5	.505 ±.002			.498		2,130	640			.48		
Q11-55C	.551	14.0	.525			.518		2,210	700			.50		
Q11-56C	.532	14.3	.536			.529		2,250	730			.51		
Q11-59C	.594	15.1	.569			.561		2,380	740			.54		
Q11-62C	.625	15.9	.594			.585		2,500	970			.70		
Q11-65C	.656	16.7	.625			.617		2,630	1,020			.74		
Q11-66C	.669	17.0	.638			.629		2,680	1,040			.019	.015	.75
Q11-68C	.687	17.5	.656			.647		2,750	1,060					.77
Q11-71C	.718	18.3	.687			.679		2,870	1,110			.024	.019	.81
Q11-75C	.750	19.0	.719	.710 +.000 -.013	3,360	1,100	1.27							
Q11-78C	.781	19.8	.750 ±.003	.741	3,500	1,210	.022	.018	1.32					
Q11-81C	.812	20.6	.781	.771	3,640	1,260			1.38					
Q11-84C	.843	21.4	.812	.803	3,780	1,310	.026	.021	1.43					
Q11-87C	.875	22.2	.838	.828	3,920	1,620			1.48					
Q11-90C	.906	23.0	.869	.860	4,060	1,680	.026	.021	1.53					
Q11-93C	.937	23.8	.900	.889	4,200	1,740			1.57					
Q11-96C	.968	24.4	.925	.916	5,180	2,080			2.26					
Q11-98C	.984	25.0	.941	.930	5,260	2,120	.026	.021	2.31					
Q11-100C	1.000	25.4	.957	.946	5,350	2,150			2.34					

RETAINER RINGS

TYPE	MATERIALS
EXTERNAL	CARBON SPRING STEEL WITH OIL-DIP FINISH

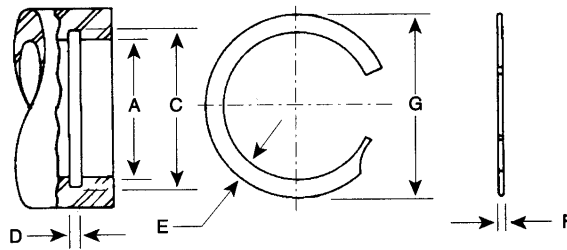


STOCK NO.	A HOUSING DIA.		C GROOVE DIA.	D GROOVE WIDTH	F RING THICKNESS	G RING OUTER DIA.	E RADIAL WALL	THRUST LOAD BASED ON RING SHEAR	THRUST LOAD BASED ON GROOVE YIELD (45,000 P.S.I.)	MAX. CORNER RADIUS OR CHAMFER		WEIGHT lbs./M
	INCHES	MM.								*X	*CH	
Q10-50	.500	12.7	.472	.022	.018 +/- .0015	.467	.045	1,300	380	.007	.005	.32
Q10-56	.562	14.3	.534	.022		.529		1,460	500			
Q10-62	.625	15.9	.597 +/- .002	.022 +.002		.591 +.000		1,630	630			
Q10-68	.687	17.5	.659	.022 -.000		.652 -.013		1,790	770			
Q10-75	.750	19.0	.722	.026	.021 +/- .0015	.715	.065	1,950	940	.011	.008	.48
Q10-81	.812	20.6	.770			.026 +.002		.762	2,460			
Q10-87	.875	22.2	.833	.026 -.000		.825		2,660	1,590			
Q10-93	.937	23.8	.895 +/- .003	.026		.886		2,840	1,840			
Q10-100	1.000	25.4	.958	.026	.949	3,030	2,100	1.05				
Q10-106	1.062	27.0	1.018	.031	.025	1.008 +.000 -.015	.088	3,500	1,820	.016	.012	1.94

*For calculation of Groove Yield.



TYPE	MATERIALS
INTERNAL	CARBON SPRING STEEL WITH OIL-DIP FINISH

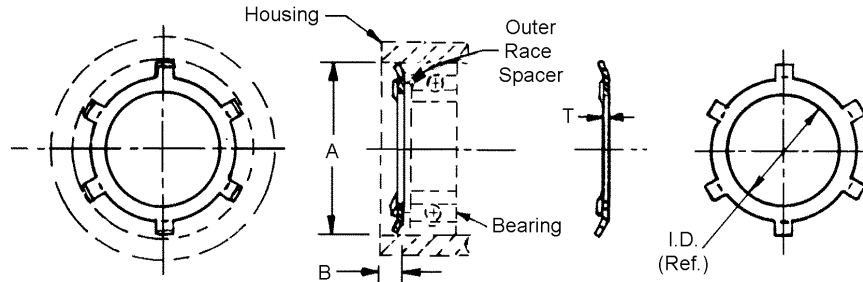


STOCK NO.	A HOUSING DIA.		C GROOVE DIA.	D GROOVE WIDTH	F RING THICKNESS	G RING OUTER DIA.	E RADIAL WALL	THRUST LOAD BASED ON RING SHEAR	THRUST LOAD BASED ON GROOVE YIELD (45,000 P.S.I.)	MAX. CORNER RADIUS OR CHAMFER		WEIGHT lbs./M
	INCHES	MM.								*X	*CH	
Q8-50	.500	12.7	.528	.022 +.002 -.000	.018	.531	.045	1,300	530	.007	.005	.28
Q8-56	.562	14.3	.590			.593		1,460	660			
Q8-62	.625	15.9	.653 ±.002			.656 +.013		1,630	810			
Q8-68	.687	17.5	.715			.719 -.000		1,790	960			
Q8-75	.750	19.0	.779	.026 +.002 -.000	±.0015	.783	.065	1,950	1,090	.011	.008	.46
Q8-81	.812	20.6	.854			.862		2,460	1,705			
Q8-87	.875	22.2	.917	.926		2,660		1,840				
Q8-93	.937	23.8	.979 ±.003	.989		2,840		1,970				
Q8-100	1.000	25.4	1.042 ±.003	.031	.025	1.052	.088	3,030	2,100	.016	.012	1.04
Q8-106	1.062	27.0	1.106 ±.004			1.117 +.015 -.000		3,500	2,340			

*For calculation of Groove Yield.

RETAINER RINGS

TYPE	HOUSING BORE SIZE	MATERIALS
BEARING INTERNAL PUSH IN DESIGN	3/8 TO 3	CARBON SPRING STEEL PLATED

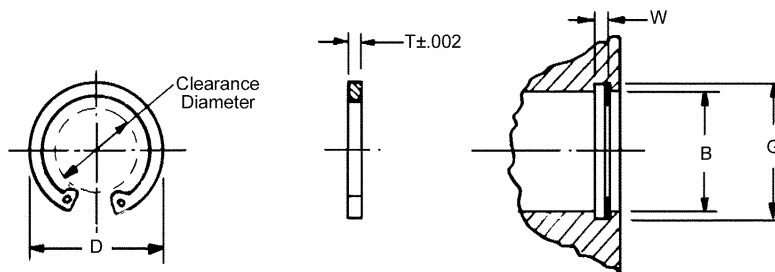


STOCK NO.	A HOUSING	B MIN. END SPACE	T±.002	I.D. (REF. ONLY)
Q6-37-CP	3/8	.040	.010	3/16
Q6-50-CP	1/2	.060	.010	1/4
Q6-61-CP	5/8	.060	.010	3/8
Q6-82-CP	7/8	.080	.015	5/8
Q6-125-CP	1 1/4	.080	.015	15/16
Q6-156-CP	1 9/16	.080	.015	1 1/8
Q6-200-CP	2	.080	.015	1 9/16
Q6-237-CP	2 3/8	.100	.015	1 7/8
Q6-300-CP	3	.100	.015	2 1/4

Sold in packages of 10.



TYPE	HOUSING BORE SIZE	MATERIALS
INTERNAL LUG DESIGN	1/4 TO 1	PH15-7 STAINLESS STEEL

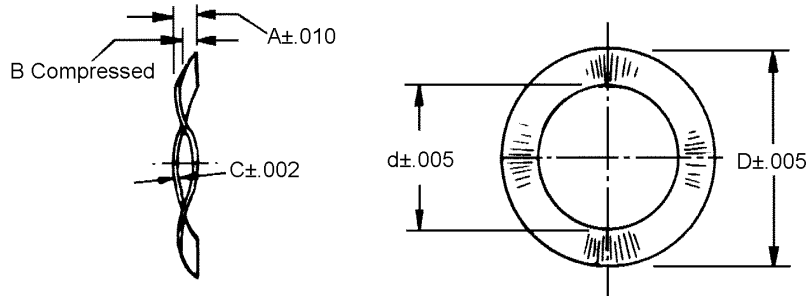


STOCK NO.	HOUSING BORE B	GROOVE DIA. G	GROOVE WIDTH W	RING THICKNESS T	FREE DIA. D	MAX. CLEAR. DIA.	PLIERS
Q4-25	1/4	.268	.020	.015	.280	.133	S13-25P
Q4-31	5/16	.330 ±.001	.020 ±.002	.015	.346	.191	S13-25P
Q4-37	3/8	.397	.029	.025	.415	.226	S13-37P
Q4-50	1/2	.530	.039	.035	.548	.290	S13-37P
Q4-62	5/8	.665 ±.002	.039 ±.003	.035	.694	.380	S13-37P
Q4-75	3/4	.796	.039	.035	.831	.490	S13-37P
Q4-87	7/8	.931	.046	.042	.971	.600	S13-37P
Q4-100	1	1.066 ±.003	.046	.042	1.111	.730	S13-37P
Q4-112	1 1/8	1.197 ±.004	.056 ±.004	.050	1.249	.815	S13-37P



SPRINGS

TYPE	MATERIALS
FOR OUTER RACE BALL BEARING PRE-LOAD	302 STAINLESS STEEL - SPRING TEMPERED



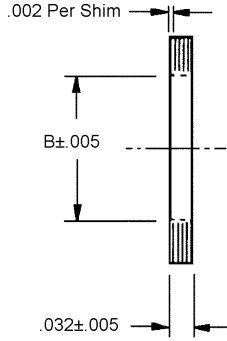
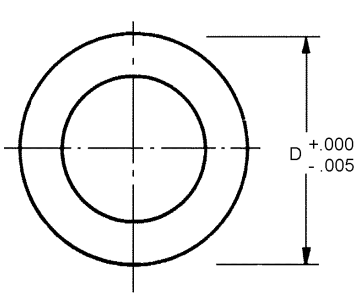
STOCK NO.	BEARING OUTSIDE DIA. (REF.)	D	d	A	B	C	LOAD IN (lbs.) TO DEFLECT TO B
SV-7	.375	.367	.265	.030	.015	.006	2-4
SV-8	.500	.492	.350	.035	.020	.007	3-5
SV-9	.625	.618	.440	.040	.025	.008	3-5
SV-4	.750	.734	.531	.050	.030	.009	4-7
SV-5	.875	.855	.650	.060	.030	.010	4-7
SV-6	1.125	1.102	.856	.075	.037	.012	9-13

Sold in packages of 10.
D & d dimensions before loading.



SPACERS

TYPE	SHAFT SIZE	MATERIALS
LAMINATED INNER RACE SHIM	1/8" TO 3/8"	BRASS - MIL-S-22499C COMP. 2 TYPE 1 CL.-1



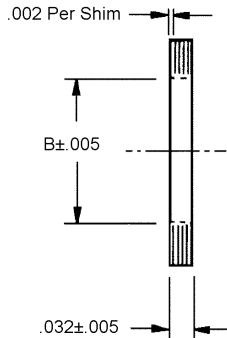
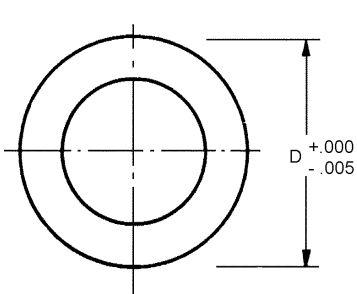
STOCK NO.	SHAFT SIZE	D	B
SS8-1	1/8	.234	.135
SS8-2	3/16	.375	.193
SS8-3	1/4	.500	.255
SS8-4	3/8	.625	.380

Sold in packages of 10.

The inner race spacer fits on shaft and pre-loads inner race of ball bearing.



TYPE	SHAFT SIZE	MATERIALS
LAMINATED OUTER RACE SHIM	1/8" TO 3/8"	BRASS - MIL-S-22499C COMP. 2 TYPE 1 CL.-1



STOCK NO.	D	B
SS7-1	.370	.312
SS7-2	.498	.375
SS7-3	.623	.437
SS7-4	.873	.687

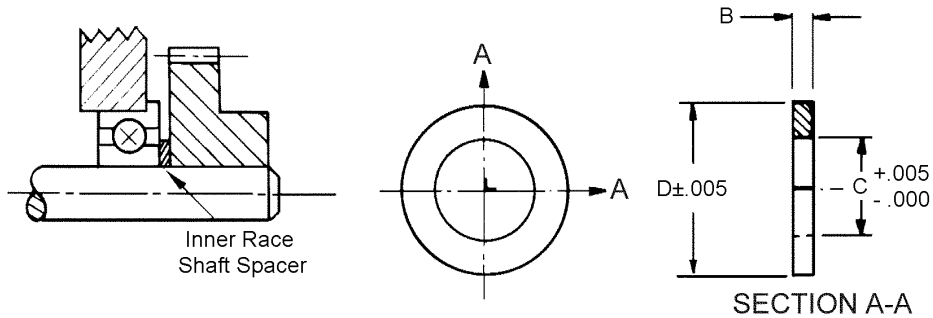
Sold in packages of 10.

The outer race spacer fits in housing and pre-loads outer race of ball bearing.



SHAFT SPACERS

TYPE	SHAFT SIZE	MATERIALS
INNER RACE SHAFT	5/64 TO 3/16	18-8 STAINLESS STEEL OR ANODIZED ALUMINUM



STOCK NO.	C	D	B	
SS1-49	.078	.164	.002	±.001
SS1-1			.004	
SS1-2			.006	
SS1-46			.008	
SS1-3	.078	.164	.010	±.002
SS1-47			.012	
SS1-48			.014	
SS1-4			.016	
SS1-50	.093	.203	.002	±.001
SS1-5			.004	
SS1-6			.006	
SS1-43			.008	
SS1-7	.093	.203	.010	±.002
SS1-44			.012	
SS1-45			.014	
SS1-8			.016	
SS1-51	.125	.187	.002	±.001
SS1-9			.004	
SS1-10			.006	
SS1-27			.008	
SS1-11	.125	.187	.010	±.002
SS1-28			.012	
SS1-29			.014	
SS1-12			.016	



Sold in packages of 10.

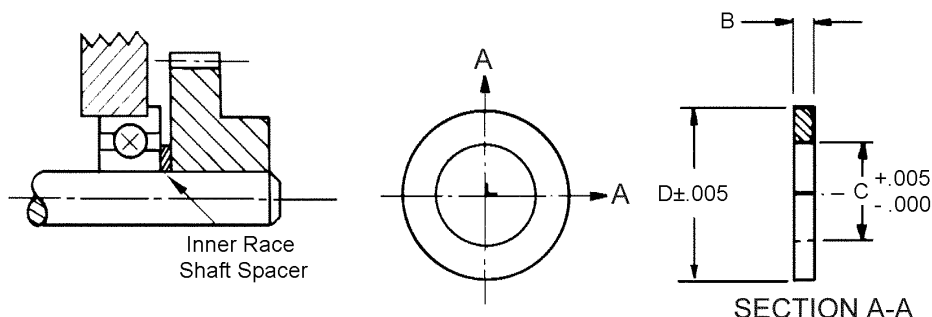
STAINLESS STOCK NO.	ALUMINUM STOCK NO.	C	D	B			
SS1-13	SS1-13-A	.125	.187	.031	±.003		
SS1-14	SS1-14-A			.063			
SS1-30	SS1-30-A			.094			
SS1-15	SS1-15-A			.125			
SS1-31	SS1-31-A			.188			
SS1-16	SS1-16-A			.250			
SS1-32	SS1-32-A			.375			
SS1-17	SS1-17-A		.500				
SS1-52	-	.187	.250	.002	±.001		
SS1-18	-			.004			
SS1-19	-			.006			
SS1-36	-			.008			
SS1-20	-			.010	±.002		
SS1-37	-			.012			
SS1-38	-			.014			
SS1-21	-			.016			
SS1-22	SS1-22-A			.187	.250	.031	±.003
SS1-23	SS1-23-A					.063	
SS1-40	SS1-40-A	.094					
SS1-24	SS1-24-A	.125					
SS1-41	SS1-41-A	.188					
SS1-25	SS1-25-A	.250					
SS1-42	SS1-42-A	.375					
SS1-26	SS1-26-A		.500				

Also available

STOCK NO.	DESCRIPTION OF KIT
KIT-SS1	STAINLESS STEEL SHAFT SPACERS, INNER RACE, 1/8, 3/16 AND 1/4" SHAFT SIZES (330 PIECES)

SHAFT SPACERS

TYPE	SHAFT SIZE	MATERIALS
INNER RACE SHAFT	1/4 TO 1/2	18-8 STAINLESS STEEL OR ANODIZED ALUMINUM



STAINLESS STOCK NO.	ALUMINUM STOCK NO.	C	D	B		
SS2-66	-	.250	.375	.002	±.001	
SS2-27	-			.004		
SS2-28	-			.006		
SS2-60	-			.008		
SS2-29	-			.010	±.002	
SS2-61	-			.012		
SS2-62	-			.014		
SS2-30	-			.016		
SS2-31	SS2-31-A			.031	±.003	
SS2-32	SS2-32-A			.063		
SS2-63	SS2-63-A			.094		
SS2-33	SS2-33-A			.125		
SS2-64	SS2-64-A			.188		
SS2-34	SS2-34-A			.250		
SS2-65	SS2-65-A	.375				
SS2-35	SS2-35-A	.500				
SS2-80	-	.313	.500	.002		±.001
SS2-81	-			.004		
SS2-82	-			.006		
SS2-83	-			.008		
SS2-36	-			.010	±.002	
SS2-84	-			.012		
SS2-85	-			.014		
SS2-37	-			.016		
SS2-38	-			.031	±.003	
SS2-39	-			.062		
SS2-40	-			.125		

STAINLESS STOCK NO.	ALUMINUM STOCK NO.	C	D	B		
SS2-67	-	.375	.562	.002	±.001	
SS2-68	-			.004		
SS2-69	-			.006		
SS2-70	-			.008		
SS2-41	-			.010	±.002	
SS2-71	-			.012		
SS2-72	-			.014		
SS2-42	-			.016		
SS2-43	SS2-43-A			.031	±.003	
SS2-44	SS2-44-A			.063		
SS2-73	SS2-73-A			.094		
SS2-45	SS2-45-A			.125		
SS2-74	SS2-74-A			.188		
SS2-75	SS2-75-A			.250		
SS2-76	SS2-76-A	.375				
SS2-77	SS2-77-A	.500				
SS2-90	-	.500	.750	.002		±.001
SS2-91	-			.004		
SS2-92	-			.006		
SS2-93	-			.008		
SS2-46	-			.010	±.002	
SS2-94	-			.012		
SS2-95	-			.014		
SS2-47	-			.016		
SS2-48	-			.031	±.003	
SS2-49	-			.062		
SS2-50	-			.125		

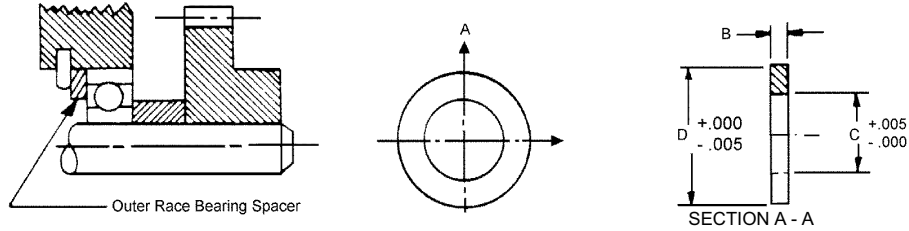
Sold in packages of 10.

Also available

STOCK NO.	DESCRIPTION OF KIT
KIT-SS1	STAINLESS STEEL SHAFT SPACERS, INNER RACE, 1/8, 3/16 AND 1/4" SHAFT SIZES (330 PIECES)

BEARING SPACERS

TYPE	SHAFT SIZE	MATERIALS
OUTER RACE	5/32 TO 1 1/8	18-8 STAINLESS STEEL OR ANODIZED ALUMINUM



STAINLESS STOCK NO.	ALUMINUM STOCK NO.	D	C	B			
SS3-51	-	.153	.088	.003	±.001		
SS3-52	-			.005			
SS3-53	-			.007			
SS3-54	-			.010	±.002		
SS3-55	-			.020			
SS3-56	-	.178	.123	.003	±.001		
SS3-57	-			.005			
SS3-58	-			.007			
SS3-59	-			.010	±.002		
SS3-60	-			.020			
SS3-50	-	.248	.167	.003	±.003		
SS3-1	-			.005			
SS3-32	-			.007			
SS3-2	-			.010	±.003		
SS3-71	-			.020			
SS3-33	-	.310	.206	.003	±.001		
SS3-3	-			.005			
SS3-34	-			.007			
SS3-4	-			.010	±.002		
SS3-72	-			.020			
SS3-35	-	.373	.253	.003	±.001		
SS3-5	-			.005			
SS3-36	-			.007			
SS3-6	-			.010	±.002		
SS3-7	-			.020			
SS3-8	SS3-8-A			.032		±.003	
SS3-9	SS3-9-A			.062			
SS3-10	SS3-10-A			.125			
SS3-41	SS3-41-A			.250			
SS3-42	SS3-42-A			.375			
SS3-43	SS3-43-A			.500			
SS3-37	-			.498	.378		.003
SS3-11	-					.005	
SS3-38	-	.007					
SS3-12	-	.010	±.002				
SS3-13	-	.020					
SS3-14	SS3-14-A	.498	.378	.032	±.003		
SS3-15	SS3-15-A			.062			
SS3-16	SS3-16-A			.125			
SS3-44	SS3-44-A			.250			
SS3-45	SS3-45-A			.375			
SS3-46	SS3-46-A			.500			
SS3-39	-			.623	.503	.003	±.001
SS3-17	-					.005	
SS3-40	-					.007	
SS3-18	-					.010	±.002
SS3-19	-	.020					
SS3-20	SS3-20-A	.685	.562	.032	±.003		
SS3-21	SS3-21-A			.062			
SS3-22	SS3-22-A			.125			
SS3-47	SS3-47-A			.250			
SS3-48	SS3-48-A			.375			
SS3-49	SS3-49-A	.500					
SS3-23	-	.873	.687	.016	±.002		
SS3-24	-			.032			
SS3-25	-			.062			
SS3-61	-			.003	±.001		
SS3-62	-			.005			
SS3-63	-	.007					
SS3-64	-	.010	±.002				
SS3-26	-	.016					
SS3-65	-	.020					
SS3-27	SS3-27-A	1.120	.937	.032	±.003		
SS3-28	SS3-28-A			.062			
SS3-67	SS3-67-A			.125			
SS3-68	SS3-68-A			.250			
SS3-69	SS3-69-A			.375			
SS3-70	SS3-70-A	.500					
SS3-29	-	1.120	.937	.016	±.002		
SS3-30	-			.032			
SS3-31	-			.062			

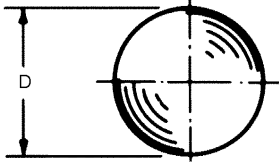
Sold in packages of 10.

Also available

STOCK NO.	DESCRIPTION OF KIT
KIT-SS3	STAINLESS STEEL BEARING SPACERS, OUTER RACE, 1/8, 3/16 AND 1/4" SHAFT SIZES (330 PIECES)

BALLS

TYPE	DIAMETER	MATERIALS
HARDENED STEEL	1/16" TO 1/2"	ROCKWELL C55 TO C62 440 STAINLESS STEEL AND 52100 CHROME STEEL



STAINLESS STEEL STOCK NO.	CHROME STEEL STOCK NO.	D DIA.
PT4-2	PT5-2	1/16
PT4-3	PT5-3	3/32
PT4-4	PT5-4	1/8
PT4-5	PT5-5	5/32
PT4-6	PT5-6	3/16
-	PT5-7	7/32
PT4-8	PT5-8	1/4
PT4-10	PT5-10	5/16
PT4-12	PT5-12	3/8
PT4-16	PT5-16	1/2

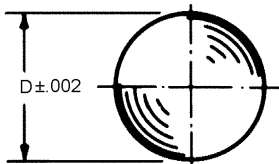
DIAMETER TOLERANCE:
440 Stainless Steel, Grade #50±.0002
52100 Chrome Steel, Grade #25±.0001

SPHERICITY TOLERANCE:
440 Stainless Steel, Grade #50±.000050
52100 Chrome Steel, Grade #25±.00025



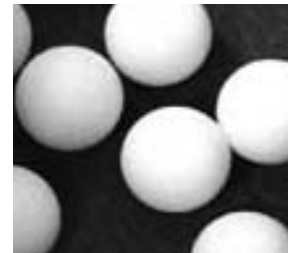
Sold in packages of 10.

TYPE	DIAMETER	MATERIALS
PLASTIC	1/16" TO 1/2"	NYLON, POLYURETHANE, AND TEFLON



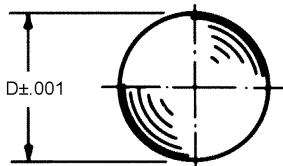
NYLON STOCK NO.	POLYURETHANE STOCK NO.	TEFLON STOCK NO.	D DIA.
PT1-2	-	-	1/16
PT1-3	-	-	3/32
PT1-4	-	PT3-4	1/8
PT1-6	-	PT3-6	3/16
PT1-8	PT2-8	PT3-8	1/4
PT1-12	PT2-12	PT3-12	3/8
PT1-16	PT2-16	PT3-16	1/2

- Ideal for float, check, relief valves
- Non-corrosive, quiet running and self lubricating



Sold in packages of 10.

TYPE	DIAMETER	MATERIALS
BRASS	1/8" TO 1/2"	BRASS HARDNESS 75-87 RB (TYP.)



STOCK NO.	SIZE	DIAMETER D
PT9-4	1/8	.125
PT9-5	5/32	.15625
PT9-6	3/16	.1875
PT9-7	7/32	.21875
PT9-8	1/4	.250
PT9-9	9/32	.28125
PT9-10	5/16	.3125
PT9-11	11/32	.34375
PT9-12	3/8	.375
PT9-14	7/16	.4375
PT9-16	1/2	.500

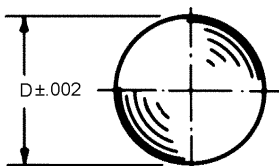
CHARACTERISTICS
Resistance to corrosion by water.
Electrical conductivity.

NOTE: Other sizes available upon request.
Brass surface finish 6-8 microfinish.

Sold in packages of 10.



TYPE	DIAMETER	MATERIALS
TITANIUM	1/8" TO 3/8"	TITANIUM 6A4V ELI PER ASTM F136



STOCK NO.	SIZE	DIAMETER D
PT8-4	1/8	.125
PT8-5	5/32	.15625
PT8-6	3/16	.1875
PT8-7	7/32	.21875
PT8-8	1/4	.250
PT8-10	5/16	.3125
PT8-12	3/8	.375

CHARACTERISTICS
Exceptional anti-corrosive properties.
Operates effectively under high temperatures.
High level of tension/compression strength.

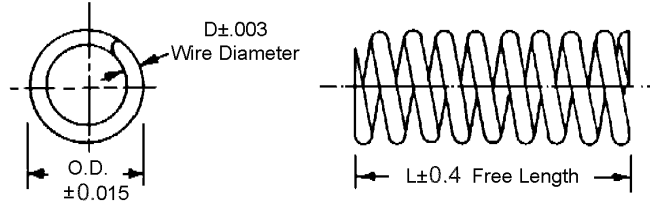
NOTE:
Other sizes available upon request.

Sold in packages of 10.



SPRINGS

TYPE	STYLE	MATERIALS
COMPRESSION	RIGHT HAND - OPEN WOUND ENDS SQUARED	302 STAINLESS STEEL SPRING TEMPERED



STOCK NO.	OUTSIDE DIA.	D	L	COILS	K $\pm 10\%$
SPR1-1	.057	.007	3/8	18	1.58
SPR9-1		.008	1/4	13	4.41
SPR9-2		.008	1/2	24	2.08
SPR9-3	.088	.010	1/4	9	4.16
SPR1-2		.010	1/2	17	1.91
SPR9-5		.012	3/8	14	5.41
SPR9-6		.012	3/4	24	2.66
SPR9-7	.120	.016	1/4	7	14.57
SPR9-8		.016	1/2	13	6.91
SPR9-9		.018	3/8	10	14.91
SPR1-3		.018	5/8	16	8.82
SPR9-10		.018	3/4	19	7.08
SPR9-11		.020	3/8	11	23.07
SPR9-12		.020	3/4	20	10.99
SPR9-13		.022	1/2	14	25.90
SPR9-14		.022	1	27	12.24
SPR9-15		.180	.018	1/2	8
SPR9-16	.018		1	14	2.66
SPR9-17	.020		1/2	8	8.08
SPR9-18	.020		1	15	3.83
SPR1-4	.022		1/2	8	11.82
SPR9-20		.022	1	16	5.41
SPR9-21	.180	.024	1/2	9	15.74
SPR9-22		.024	1	17	7.49
SPR9-23		.026	1/2	9	22.32
SPR9-24		.026	1	17	10.16
SPR9-25		.029	3/4	14	21.49
SPR9-26		.029	1 1/2	26	10.32
SPR9-27		.032	3/4	14	34.40
SPR9-28		.032	1 1/2	27	15.66
SPR9-29	.240	.026	1/2	6	17.40
SPR1-5		.026	5/8	8	10.57
SPR9-30		.026	1	12	6.16
SPR9-31		.035	1/2	8	40.40
SPR9-32		.035	1	14	18.65
SPR9-33		.038	3/4	10	38.40
SPR9-34		.038	1 1/2	20	17.82
SPR9-35		.040	1	14	32.48
SPR9-36	.040	2	27	15.57	
SPR1-6	.300	.032	5/8	6	5.16
SPR1-7	.360	.042	7/8	8	21.24
SPR1-8	.420	.045	1	7	16.66
SPR1-9	.480	.055	1 1/4	8	22.49
SPR1-10	.600	.063	1 1/2	8	19.99
SPR1-11	.720	.072	2	9	16.66

K = Average Spring Rate lbs./in.

Sold in packages of 10.

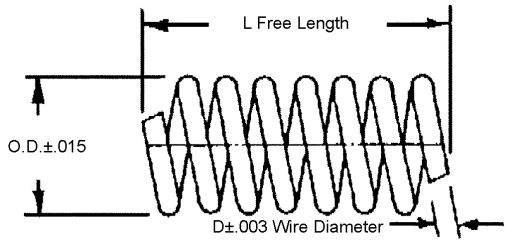
F

Also available

STOCK NO.	DESCRIPTION OF KIT
KIT-SPR9	COMPRESSION SPRING KIT - ASSORTED SIZES .057 TO .240 DIAMETER TO 2" LONG (141 PIECES)

SPRINGS

TYPE	LENGTHS	MATERIALS
EXPERIMENTAL	1 1/2 TO 2 1/2	302 STAINLESS STEEL SPRING TEMPERED



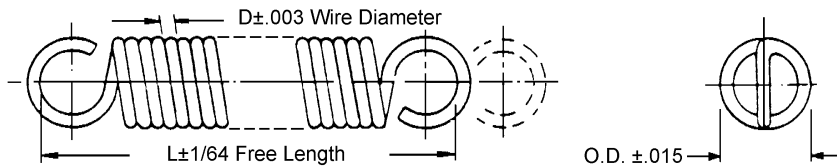
STOCK NO.	OUTSIDE DIA.	D	L	APPROX. NO. COILS	K ±10%
SPR7-1	.093	.016	1 1/2	32	5.98
SPR7-2	.125	.018	2	37	3.06
SPR7-7	.140	.016	11	17	3.32
SPR7-8	.172	.018	1 1/4	19	2.15
SPR7-3	.187	.023	2 1/2	37	2.26
SPR7-4	.250	.025	3	29	1.67
SPR7-9	.250	.023	1 1/2	22	1.59
SPR7-10	.328	.025	1 3/4	19	1.06
SPR7-11	.390	.032	2	16	2.11
SPR7-12	.468	.040	2 1/4	12	4.11
SPR7-13	.609	.047	2 1/2	15	2.43

- Cut you own length
- Ends can be ground or looped

K = Average Spring Rate lbs./in.

Sold in packages of 10.

TYPE	LENGTHS	MATERIALS
EXTENSION - FULL TWIST LOOPS CLOSE WOUND	1/4" TO 5"	302 STAINLESS STEEL SPRING TEMPERED

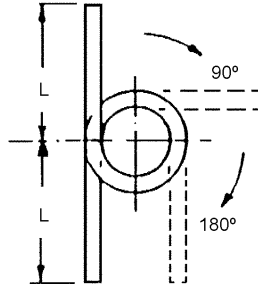
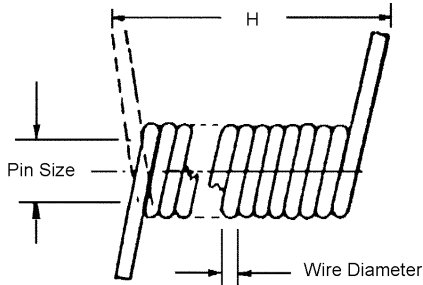


Sold in packages of 10.

STOCK NO.	OUTSIDE DIA.	D	L	K ± 10%
SPR10-1	.063	.008	1/4	1.7
SPR2-1	.063	.008	3/8	.9
SPR10-2	.063	.008	1/2	.6
SPR10-3	.093	.010	3/8	1.0
SPR2-2	.093	.012	1/2	1.7
SPR10-4	.093	.010	3/4	.3
SPR2-3	.120	.018	1	2.7
SPR10-5	.120	.016	3/4	2.5
SPR10-6	.120	.016	1 1/4	1.1
SPR10-7	.120	.020	3/4	6.9
SPR10-8	.120	.020	1 1/4	3.7
SPR2-4	.180	.026	1 1/4	4.2
SPR10-9	.180	.022	3/4	3.6
SPR10-10	.180	.022	1 1/4	1.7
SPR10-11	.180	.026	3/4	8.8
SPR10-13	.180	.031	3/4	22.5
SPR10-14	.180	.031	1 1/4	10.9
SPR2-5	.240	.031	1 1/2	3.5
SPR10-15	.240	.026	3/4	4.7
SPR10-16	.240	.026	1 1/4	1.7
SPR10-17	.240	.029	3/4	8.2
SPR10-18	.240	.029	1 1/4	3.2
SPR10-19	.240	.031	3/4	11.5
SPR10-20	.240	.031	1 1/4	4.4
SPR10-21	.240	.034	3/4	18.4
SPR10-22	.240	.034	1 1/4	7.4
SPR2-6	.360	.055	2	15.2
SPR10-27	.360	.031	1	2.7
SPR10-28	.360	.031	1 1/2	1.2
SPR10-29	.360	.037	1	6.6
SPR10-30	.360	.037	1 1/2	2.8
SPR10-31	.360	.045	1 1/4	11.3
SPR10-32	.360	.045	2	5.2
SPR10-33	.360	.055	1 1/4	32.2
SPR10-35	.500	.037	1 1/4	2.3
SPR10-36	.500	.037	2	.8
SPR2-7	.500	.055	2 1/2	4.2
SPR2-8	.650	.055	3	1.6
SPR2-9	.750	.063	4	1.4
SPR2-10	.580	.075	4 1/2	2.1
SPR2-11	1.000	.075	5	1.2

SPRINGS

TYPE	LENGTHS	MATERIALS
TORSION LEFT HAND WOUND	1/2" TO 2"	STAINLESS STEEL



STOCK NO.	WIRE DIA.	OUTSIDE DIA.	L	PIN SIZE	H	TORQUE IN.LBS. @ 180
SPR3-1	.012	.166	.50	.109	.059	.047
SPR3-2	.015	.183	.75	.109	.075	.093
SPR3-3	.018	.216	.75	.140	.109	.140
SPR3-4	.021	.247	1.00	.156	.127	.218
SPR3-5	.025	.304	1.00	.203	.151	.375
SPR3-6	.030	.394	1.00	.250	.181	.625
SPR3-7	.035	.450	1.25	.281	.212	1.000
SPR3-8	.040	.518	2.00	.343	.242	1.375
SPR3-9	.048	.618	2.00	.406	.292	2.500

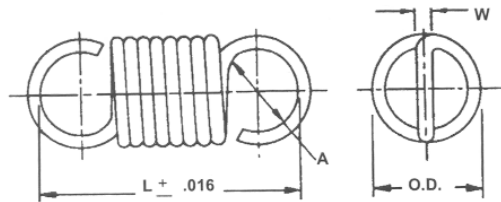
Special springs on request, send sketch.

Right hand wound on request.

Sold in packages of 10.

F

TYPE	LENGTHS	MATERIALS
ANTI-BACKLASH EXTENSION	3/8 TO 27/64	302 STAINLESS STEEL



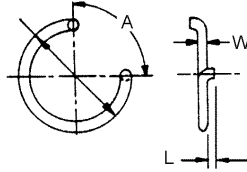
Extension Spring

STOCK NO.	OUTSIDE DIA.	W	NO. OF COILS	L	A	K LBS./IN.
SPR5-1	.105	.008	19	.375	.11	0.3
SPR5-9	.120	.010	17	.375	.10	0.5
SPR5-2	.105	.012	13	.375	.10	2.5
SPR5-6	.120	.012	14	.375	.09	1.4
SPR5-5	.090	.012	20	.375	.07	2.6
SPR5-3	.105	.015	11	.375	.09	7.7
SPR5-10	.120	.015	11	.350	.09	5.0
SPR5-3-A	.120	.016	11	.426	.12	6.5
SPR5-11	.120	.018	9	.350	.09	14.0
SPR5-4	.105	.020	10	.375	.09	32.0

Sold in packages of 10.

SPRINGS

TYPE	MATERIALS
ANTI-BACKLASH TORSION	302 STAINLESS STEEL

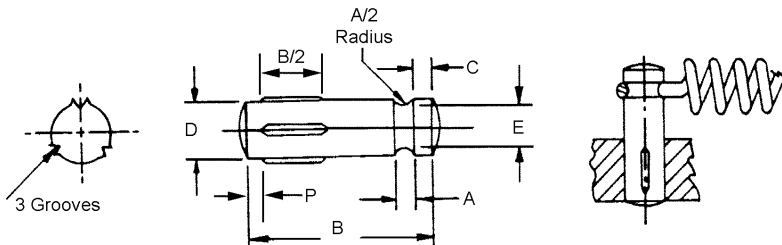


STOCK NO.	OUTSIDE DIA.	W	L	A	K LBS./IN.
SPR6-3	.37	.030	.045	90	7.6
SPR6-1	.51	.015	.045	90	0.3
SPR6-2	.51	.020	.045	90	1.0
SPR6-5	.53	.028	.045	90	4.0
SPR6-10	.55	.032	.045	90	6.3
SPR6-12	.62	.026	.031	135	2.5
SPR6-14	.65	.022	.045	135	1.3
SPR6-15	.65	.026	.045	135	2.4
SPR6-16	.72	.024	.031	135	1.5
SPR6-6	.81	.026	.062	135	2.0

Sold in packages of 10.

SPRING POSTS

DIAMETER	MATERIALS
1/8" TO 1/4"	CARBON STEEL - ZINC PLATED QQ-Z325 TYPE 1-C1.3



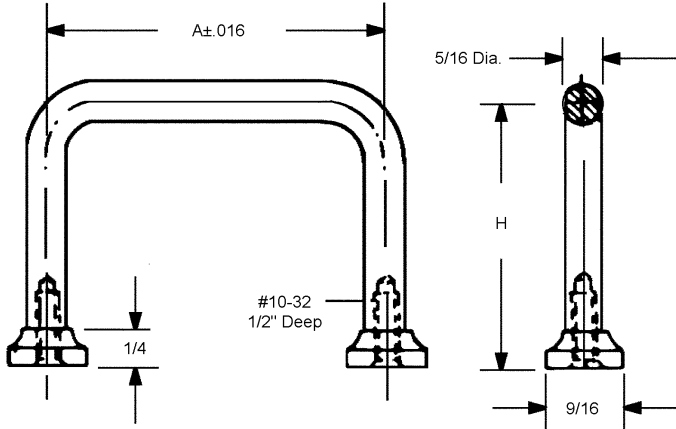
STOCK NO.	D	A	B	E	C	CROWN RADIUS	CROWN HEIGHT	P
CL-1	1/8	1/16	1/2	.083	1/32	5/32	.013	1/32
CL-2	3/16	1/16	5/8	.125	3/64	1/4	.018	1/16
CL-3	1/4	3/32	3/4	.167	1/16	5/16	.026	1/16



Sold in packages of 10.

CHASSIS HANDLES

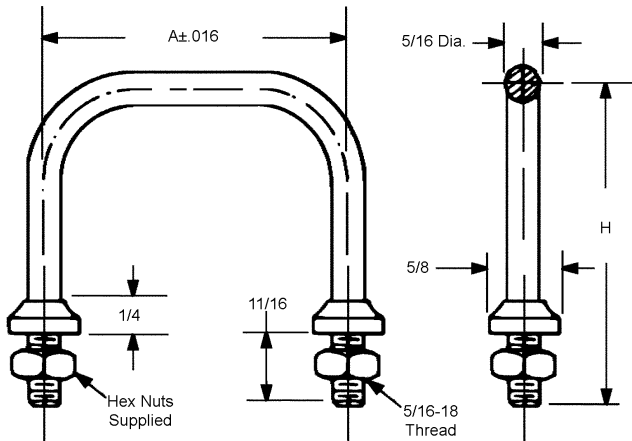
TYPE	MATERIALS
TAP	303 STAINLESS STEEL



STOCK NO.	A	H
HA-1	3.000	1 1/2
HA-2	4.500	1 1/2
HA-3	5.500	1 5/8
HA-4	6.500	1 3/4



TYPE	MATERIALS
STUD	303 STAINLESS STEEL



STOCK NO.	A	H
HB-1	3.000	1 1/2
HB-2	4.500	1 1/2
HB-3	5.500	1 5/8
HB-4	6.500	1 3/4



F

