



# MOTION TECHNOLOGIES PTY LTD

ABN 40 088 351 900

PO Box 2461  
Taren Point, NSW 2229  
Australia

24/22-30 Northumberland Rd  
Caringbah, NSW 2229  
Australia

Phone: + 61-2-9524-4782  
Fax: + 61-2-9525-3878  
Email: [sales@motiontech.com.au](mailto:sales@motiontech.com.au)  
Website: [www.motiontech.com.au](http://www.motiontech.com.au)



## PFAFF-Silberblau TRAPEZOIDAL SCREWS

### A) Screw Shafts (Standard Diameter Vs lead combinations)

Screw OD	Lead
14	4
18	4
18	6
20	4
22	5
24	5
26	6.28
30	6
35	8
36	6
40	7

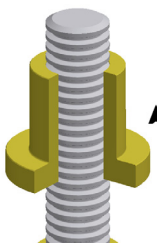
Screw OD	Lead
40	8
50	6
50	8
50	9
58	12
60	8
60	9
60	12
65	12
70	10
70	12

Screw OD	Lead
80	10
80	14
90	16
100	10
100	16
120	14
120	16
140	20
160	20
190	24
220	28
up to 320	as required

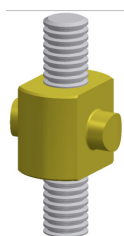
- Right Hand lead is standard (LH available)
- Carbon Steel to 17 metres long (in one piece) – (longer joined lengths available)
- Stainless Steel, DIN 1.4305 (AISI 303) or 1.4301 (AISI 304), to 3 metres long available (longer joined lengths available)
- Lead accuracy >50 µm/300mm
- Thread surface finish <= 0.8 µm
- Special surface finishes available eg: tuffrided (salt-bath nitrided), chrome plating
- Trapezoidal thread forms standard, other screw designs available
- Threads are manufactured by thread whirling which makes it possible to manufacture virtually any diameter and lead combination from above chart as well as intermediate sizes

### B) Nuts, to suit all above thread sizes in 5 standard configurations

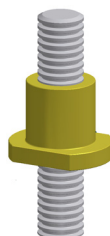
1. Standard Flange



2. Trunnion Mount



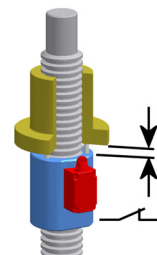
3. Nut with Flats



4. Spherical Support



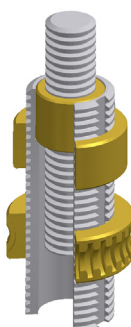
5. Safety Nut (with & without switch)



6. Hexagon Nuts

### C) Telescopic Screws

Using the above screw shaft thread forms in RH & LH combinations, Pfaff produce single and multi-stage telescopic screws to order.



Motion Technologies are the authorised exclusive Australian distributor for Pfaff-silberblau, Actuator Technics Div.

All data courtesy of Pfaff-silberblau Hebezeugfabrik GmbH & Co