



# MOTION TECHNOLOGIES PTY LTD

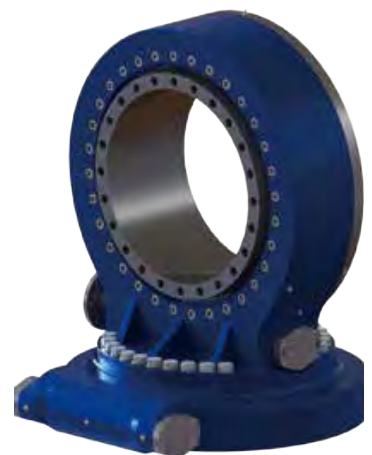
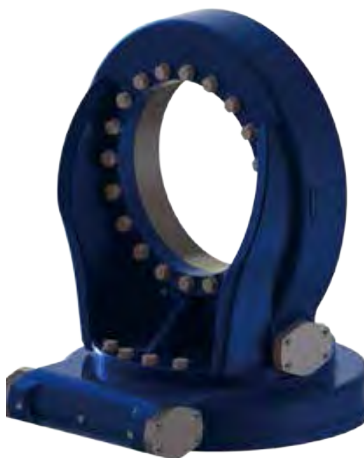
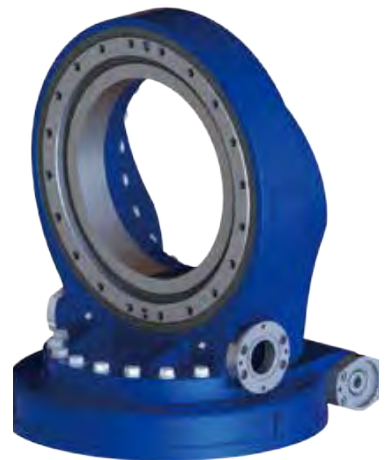
## DUAL AXIS DRIVE SLEW RINGS

Welding manipulators  
Materials handling  
Solar panels (Azimuth and Elevation)



- 3 Frame sizes
  - ✚ 400 Nm
  - ✚ 10,000 Nm
  - ✚ 20,000 Nm
- Very low backlash (to 10 arcmin, model dependent)
- Motorised to suit customer requirements:
  - ✚ Servo motor
  - ✚ Stepper motor (open or closed loop)
  - ✚ Brushed DC motors (open or closed loop)
  - ✚ Brushless low voltage DC motors (open or closed loop)
  - ✚ Hydraulic motors
  - ✚ Pneumatic motors

- Position feedback as required:
  - Incremental encoder
  - Absolute encoder
  - Resolver
  - Etc
- Dual axis motion control to customer requirements.

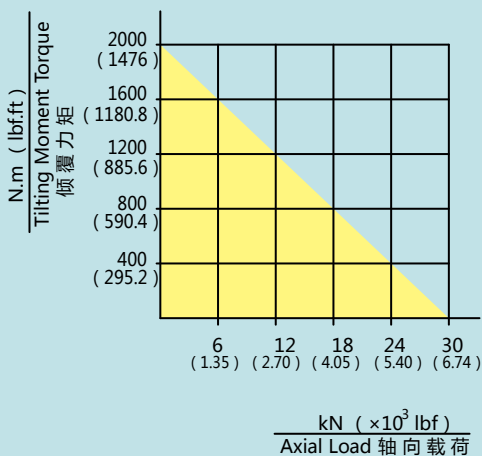




## WDE3 | Worm Drive Performance Parameters

Data 参数 Model 类型	Output Torque 输出转矩	Tilting Moment Torque 倾覆力矩	Holding Torque 保持力矩	Static Axial Rating 轴向静载荷	Static Radial Rating 径向静载荷	Gear Ratio 减速比	Tracking Precision 精度等级	Weight 重量
WDE3	400 N.m	2000 N.m	2000 N.m	30 kN	15 kN	62 : 1	≤ 0.1°	26kg
	295 lbf.ft	1475 lbf.ft	1475 lbf.ft	6744 lbf	3372 lbf			

**MOMENT LOAD CHART 承载力矩表**  
Axial Load & Tilting Moment  
轴向载荷 & 倾覆力矩



**NOTICE 注意**

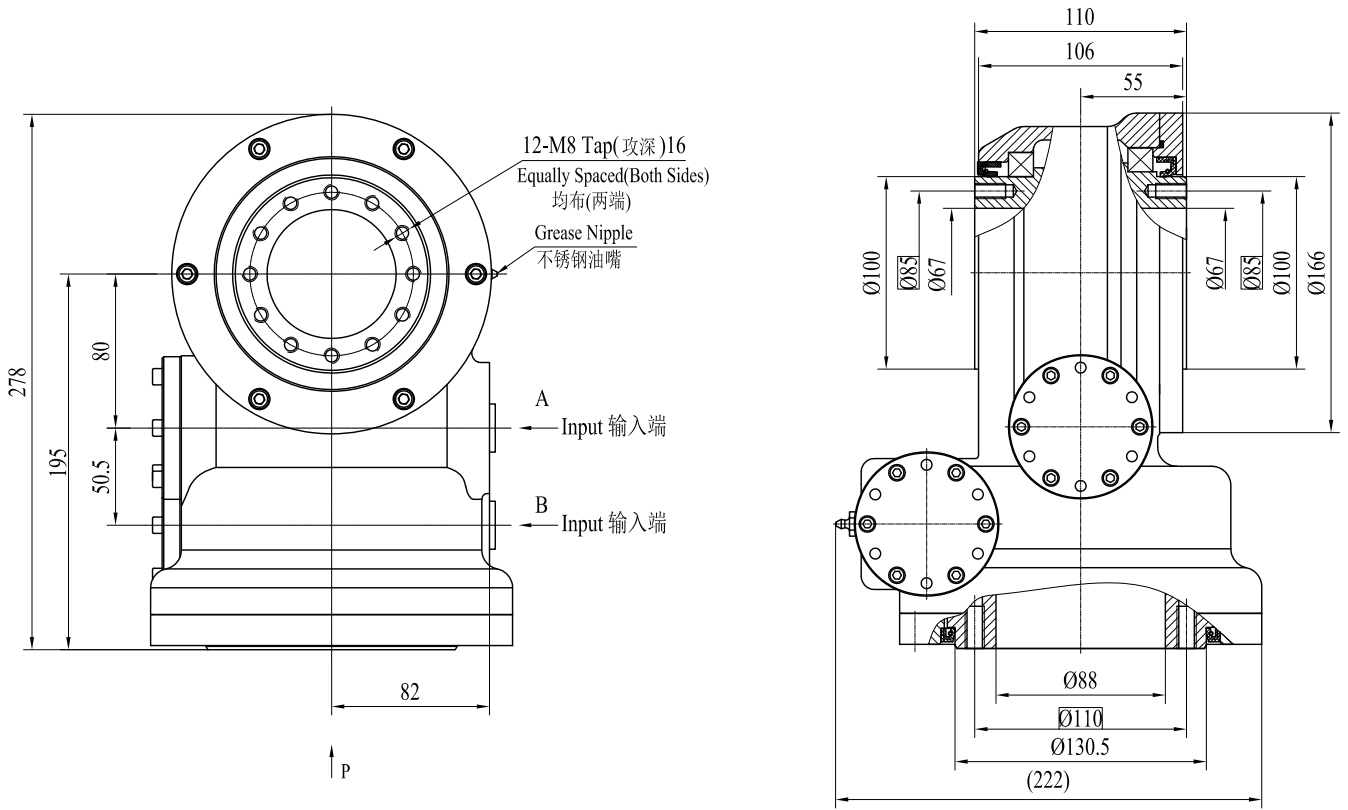
▲ PLEASE BE SURE TO REMAIN UNDER THIS CURVE  
选型时请确保实际载荷在曲线范围内

▲ This drawing is just for your reference  
以上图纸仅供参考

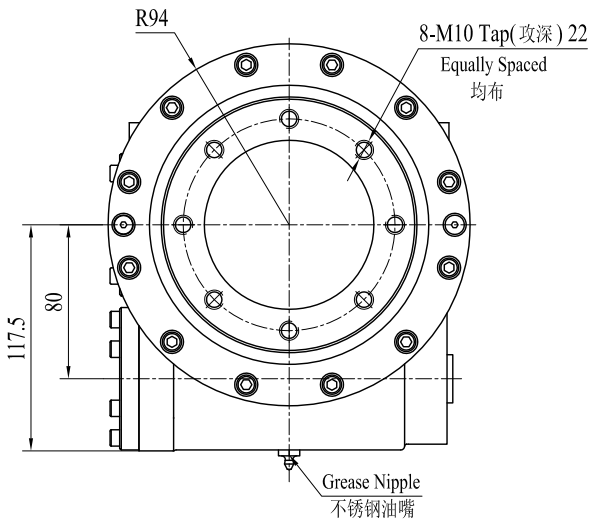
▲ The drawing is subject to change due to new design without prior notice  
本公司保留改进产品的权利而不再另行通知


# WDE3 | SLEWING DRIVE

## 回转式减速器

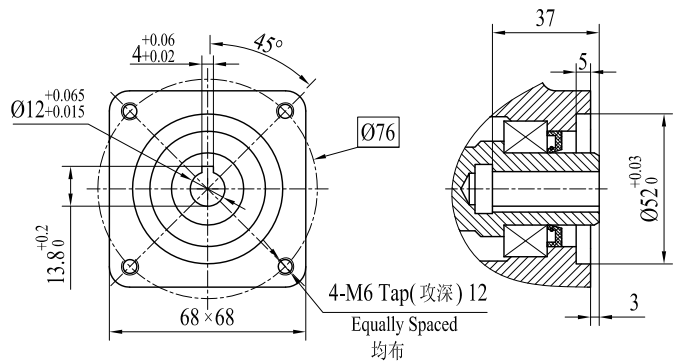


P View  
P 向

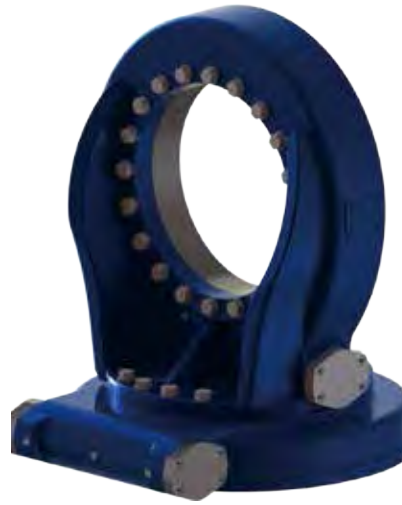
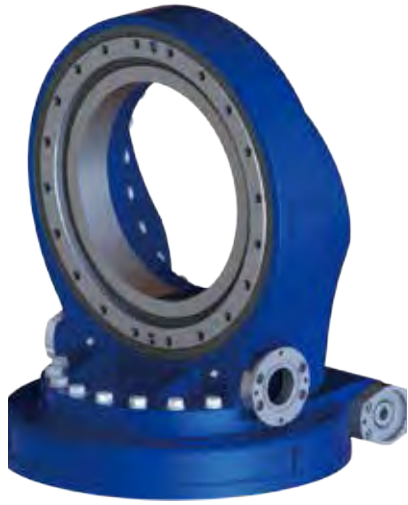


 26kg

VIEW A&B OPTION

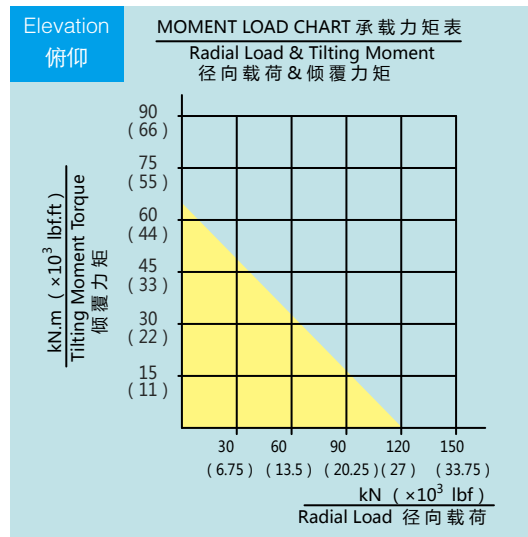
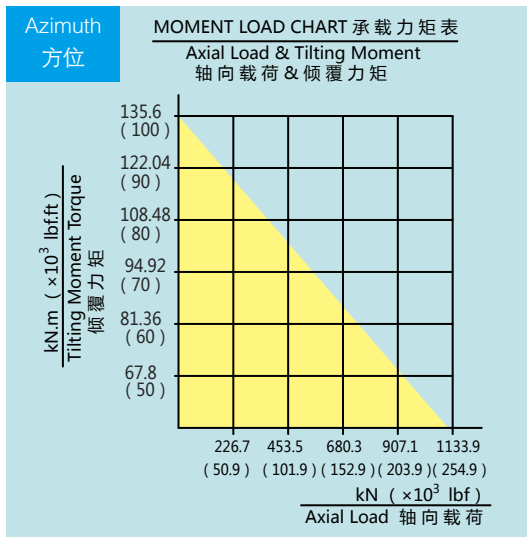


CUSTOMIZED ACCORDING TO REQUESTS



# SDE17/PDE17 | Worm Drive Performance Parameters

Model 类型	Data 参数	Output Torque 输出转矩	Tilting Moment Torque 倾覆力矩	Holding Torque 保持力矩	Static Axial Rating 轴向静载荷	Static Radial Rating 径向静载荷	Gear Ratio 减速比	Tracking Precision 精度等级		Weight 重量
								SDE17	PDE17	
Azimuth 方位		10 kN.m	135.6 kN.m	72.3 kN.m	970 kN	390 kN	102 : 1	≤ 0.15°	I : ≤ 0.03° II : ≤ 0.05° III : ≤ 0.07° IV : ≤ 0.09°	103.5kg
		7400 lbf.ft	100 × 10 <sup>3</sup> lbf.ft	53.4 × 10 <sup>3</sup> lbf.ft	218 × 10 <sup>3</sup> lbf	88 × 10 <sup>3</sup> lbf				
Elevation 俯仰		11 kN.m	65 kN.m	72.3 kN.m	50 kN	120 kN	102 : 1	≤ 0.15°	I : ≤ 0.03° II : ≤ 0.05° III : ≤ 0.07° IV : ≤ 0.09°	159.1kg
		8818 lbf.ft	47.97 × 10 <sup>3</sup> lbf.ft	53.35 × 10 <sup>3</sup> lbf.ft	11.2 × 10 <sup>3</sup> lbf	26.98 × 10 <sup>3</sup> lbf				



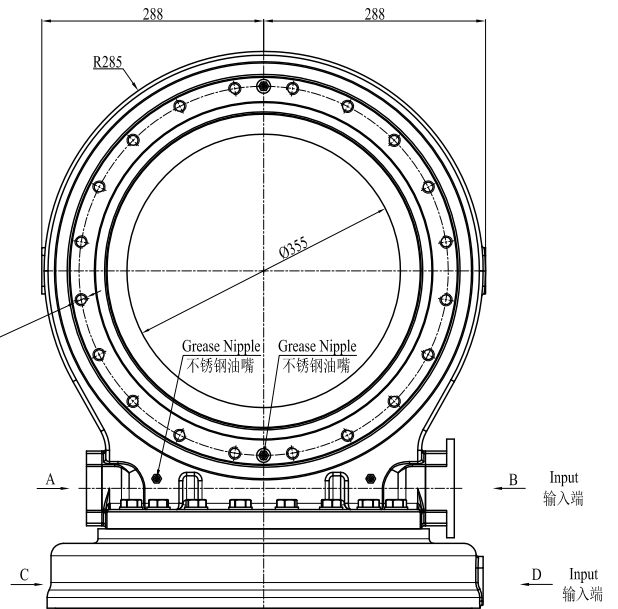
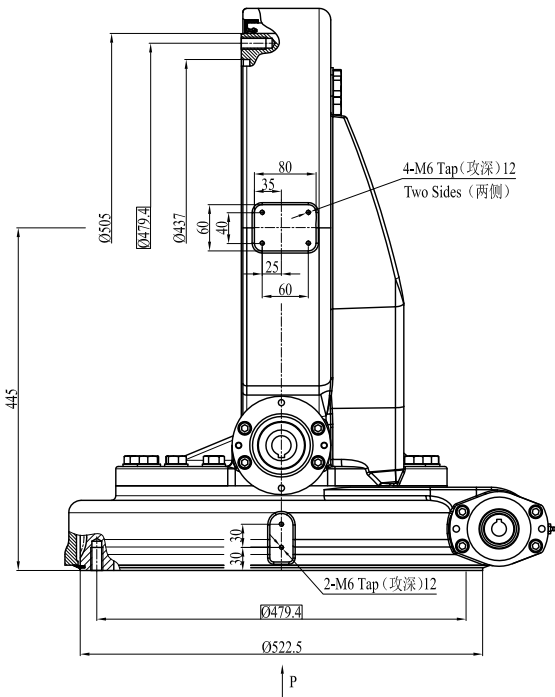
**NOTICE**

▲ This drawing is just for your reference

▲ PLEASE BE SURE TO REMAIN UNDER THIS CURVE  
选

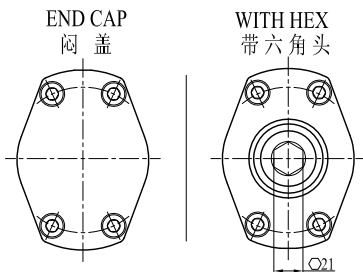
▲ The drawing is subject to change due to new design without prior notice


# SDE17/PDE17 | WORM DRIVE 回转式减速器



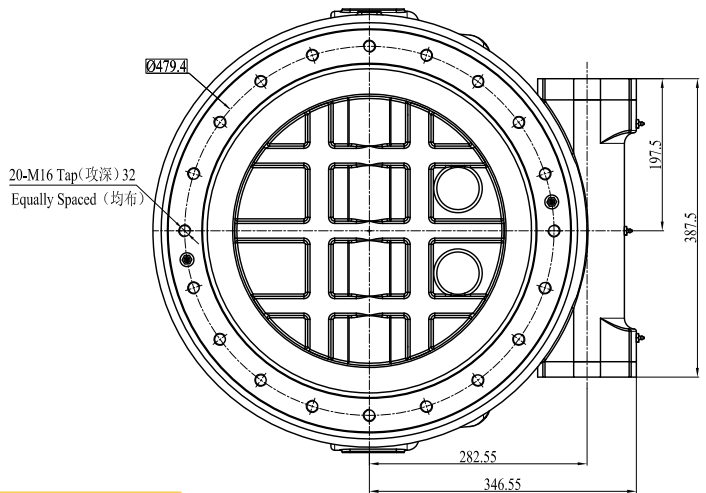
## VIEW A&C OPTION

"A" & "C" VIEW AS INPUT IS AVAILABLE

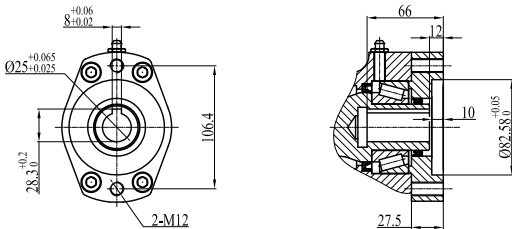


 265kg

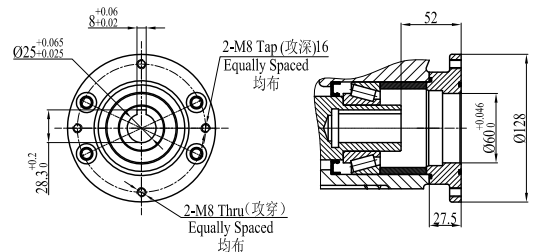
## VIEW B&D OPTION



VIEW D



VIEW B



Ø16 Ø19 Ø20 **Ø25**

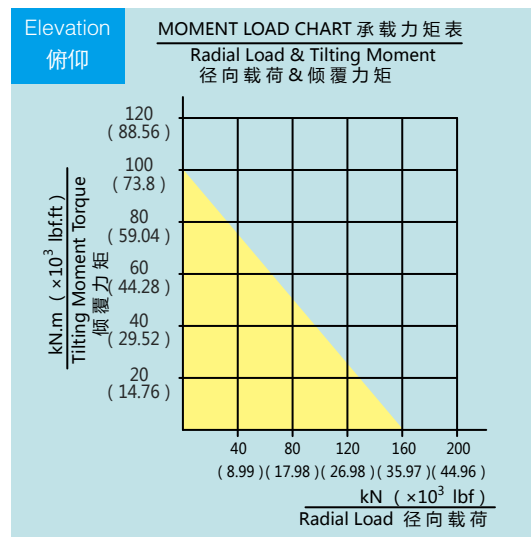
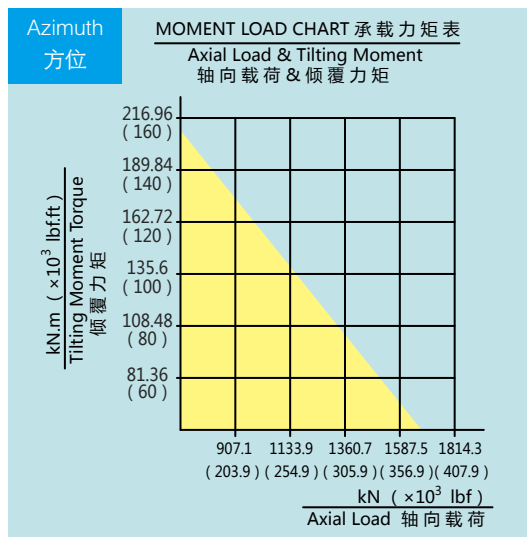
■ NORMAL

CUSTOMIZED UPON REQUESTS



# SDE21/PDE21 | Worm Drive Performance Parameters

Model 类型	Data 参数	Output Torque 输出转矩	Tilting Moment Torque 倾覆力矩	Holding Torque 保持力矩	Static Axial Rating 轴向静载荷	Static Radial Rating 径向静载荷	Gear Ratio 减速比	Tracking Precision 精度等级		Weight 重量
								SDE17	PDE17	
Azimuth 方位		15 kN.m	203 kN.m	105.8 kN.m	1598 kN	640 kN	125 : 1	≤ 0.15°	I : ≤ 0.03° II : ≤ 0.05° III : ≤ 0.07° IV : ≤ 0.09°	149kg
		11000 lbf.ft	150 × 10 <sup>3</sup> lbf.ft	78 × 10 <sup>3</sup> lbf.ft	359 × 10 <sup>3</sup> lbf	144 × 10 <sup>3</sup> lbf				
Elevation 俯仰		23 kN.m	100 kN.m	105.8 kN.m	80 kN	160 kN	125 : 1	≤ 0.15°	I : ≤ 0.05° II : ≤ 0.07° III : ≤ 0.09°	370kg
		16.97 × 10 <sup>3</sup> lbf.ft	73.8 × 10 <sup>3</sup> lbf.ft	78.08 × 10 <sup>3</sup> lbf.ft	17.98 × 10 <sup>3</sup> lbf	35.97 × 10 <sup>3</sup> lbf				



**NOTICE**

▲ PLEASE BE SURE TO REMAIN UNDER THIS CURVE  
选

▲ This drawing is just for your reference

▲ The drawing is subject to change due to new design without prior notice





# Other Motion Tech Products



Precision in the Extreme





**Distributors for Australia & New Zealand**  
**MOTION TECHNOLOGIES PTY LTD**

24/22-30 Northumberland Road  
Caringbah NSW 2229 Australia  
Phone: (02) 9524 4782  
Fax: (02) 9525 3878

[sales@motiontech.com.au](mailto:sales@motiontech.com.au)  
[www.motiontech.com.au](http://www.motiontech.com.au)

© 14/06/19