



Electric Cylinder

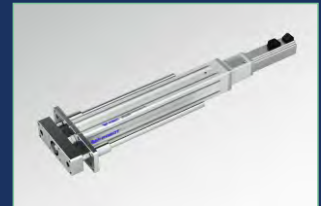
Standard Type



VZ5

Maximum Stroke 300mm
Maximum Payload 30KG216
Body Width 52mm

Standard Type



VZ5D

Maximum Stroke 300mm
Maximum Payload 30KG219
Body Width 52mm

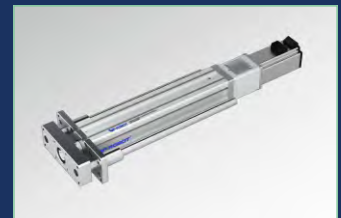
Standard Type



VZ6

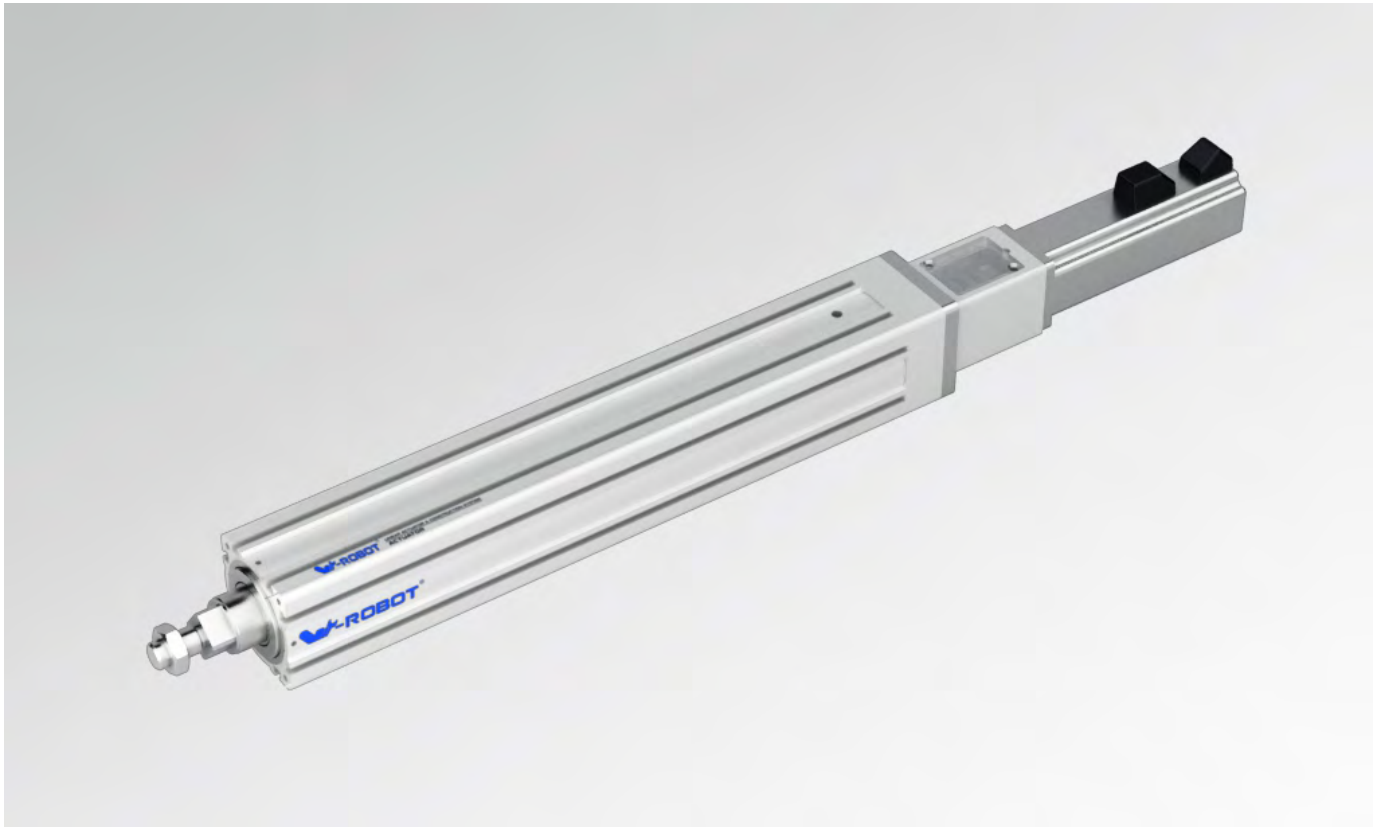
Maximum Stroke 500mm
Maximum Payload 100KG222
Body Width 65mm

Standard Type



VZ6D

Maximum Stroke 500mm
Maximum Payload 90KG225
Body Width 65mm



■ Motor direction



BC

BD

■ Guide for Model Selection

VZ5 — L10 — S100 — BC — ZP10B — MS3 —

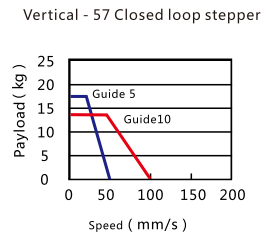
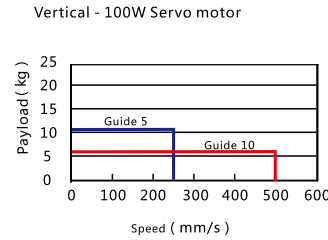
| Base Style | | Ball Screw Lead | | Stroke(mm) | Motor way | | Motor Type | | Motor power | | Original Sensor External | Sensor switch | | Sensor type | | Parts/Non-standard, d.c., | | |
|------------|--------------|-----------------|------|------------|-----------|-----------|------------|------------|-------------|-------|--------------------------|-----------------|------|-------------|---------------------------------------|---------------------------|---------------------------------|----------------------|
| VZ | VZ series | L5 | 5mm | 50-300 | BC | External | P | Panasonic | 10 | 100W | MS | Magnetic sensor | 1 | 1pcs | No | NPN | No | Standard type |
| 5 | Body width52 | L10 | 10mm | | BD | Down Side | M | Mitsubishi | 57 | 57-08 | | | 2 | 2pcs | P | PNP | A02 | With 2 pcs pedestals |
| | | | | | | Y | Yaskawa | Brakes | | 3 | | | 3pcs | | | D01 | Installation hole customization | |
| | | | | | | T | Delta | No | No brake | E | | No sensor | | M01 | Motor installation hole customization | | | |
| | | | | | | W | W-Robot | B | With brake | | | | | S01 | Stroke customization | | | |

*For Z: Motor is from clients

Specification

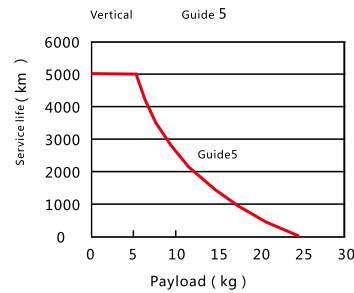
| | | |
|----------------------------------------------------|------------------------------|------------|
| Motor power AC (W) | 100W/57 Closed loop stepper | |
| BallScrewØ | (C7) | 12 |
| Repeatability | (C7) | ±0.01 |
| BallScrew Lead(mm) | 5 | 10 |
| MaximumSpeed(mm/sec) 3000 Motor Speed(rpm/mim) | 250/50 | 500/100 |
| Maximum Payload(kg) | Horizontal | 30/30 |
| | Vertical | 11/17 |
| Recommended acceleration | 1.5/0.5 | 3/1 |
| RatedThrust(N) | 330/_ | 170/_ |
| No rotating repeatability of the Electric cylinder | ±1° | |
| Coupling (mm) (Motor side) x (Ball Screw Side) | 8x8 (Length40mm) | |
| | 100W /57 Closed loop stepper | |
| Motor Output | 50~300 (50 interval) | |
| Home Sensor | Outside | DS1-HN-020 |

Speed - Payload



Service life

The lifetime of the below specifications are 5000km.

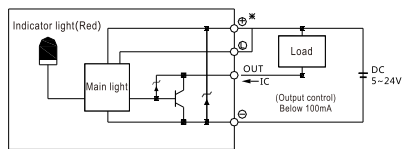


- Above repeatability is within strok 300mm,if logner travel needed,it will be lower.
- Please cooperate with external guide rail or guide rod and others guide device asured the Straight movements.
- Keep the electric cylinder sharft running without the radial loading , cooperated with external guide rail or guide rod and others guide device.
- Please note figure 2 motor size is same with table 1, or needed to replace coupler and motor holder.

Servo Motor Matches List

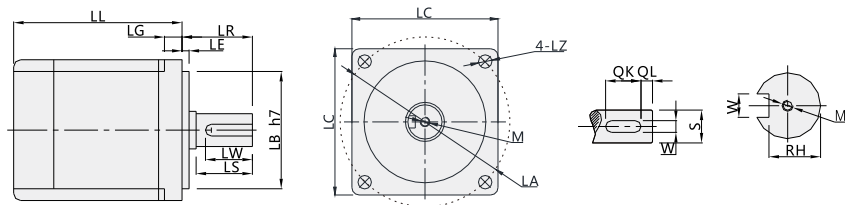
| Servo motor size | | | | | | | | | | | | | | | | | | | |
|------------------|------------|--------------|-------------------------|------------|-------|-------|-----|-----|------|-----|----|-----|-----|----|-----|--------|-------|----|---|
| Power(W) | Brand | Type | LL | LL(Brakes) | LA | LE | LZ | LC | LG | LW | RH | W | LR | S | LB | M | QK | QL | |
| 100W | Panasonic | MSMD012G1□ | V:With brake U:No brake | 92 | 122 | 45 | 3 | 3.4 | 38 | 6 | 14 | 6.2 | 3h9 | 25 | 8h6 | 30h7 | M3x6L | - | - |
| | Delta | ECMA-C2040□S | S:With brake R:No brake | 100.6 | 136.6 | 46 | 2.5 | 4.5 | 40 | 5 | 16 | 6.2 | 3 | 25 | 8h6 | 30h7 | M3x8L | - | - |
| | Mitsubishi | HC-KFS1□K | B:With brake □:No brake | 86.5 | 124.5 | 46 | 2.5 | 4.5 | 42 | 5 | - | - | - | 25 | 8h6 | 30h7 | - | - | - |
| 57stepper | W-ROBOT | W57S□ | B:With brake □:No brake | 81 | 97 | 66.67 | 1.6 | 4.5 | 56.4 | 4.8 | 15 | 7.2 | - | 21 | 8h6 | 38.1h7 | - | - | - |

Wiring drawing of inductor(original point and endpoint)



(Figure 1)

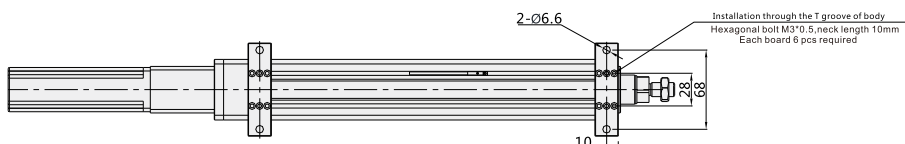
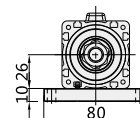
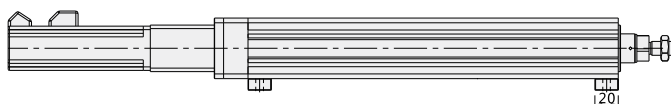
Motor size



(Figure 2)

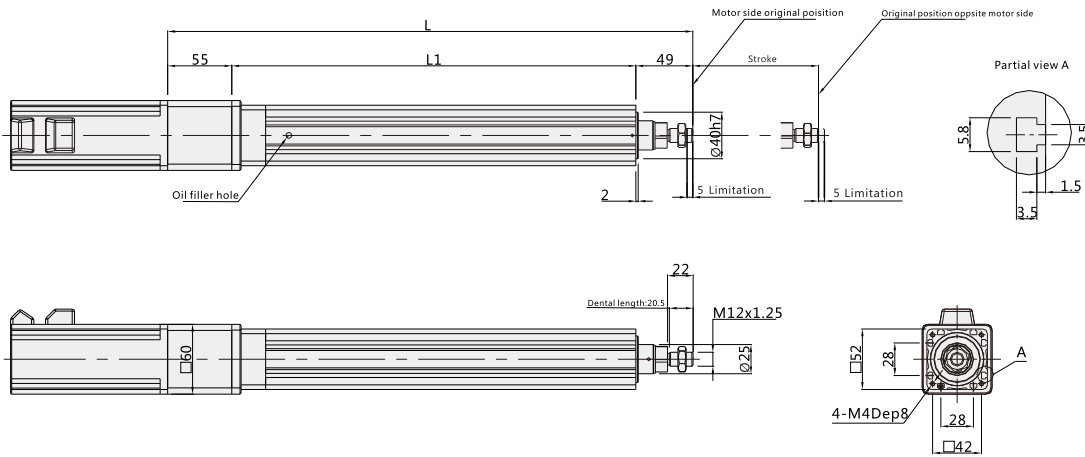
Optional accessories<Pedestal>

*optional parts: Two unit pedestals



BC: External

Unit (mm)

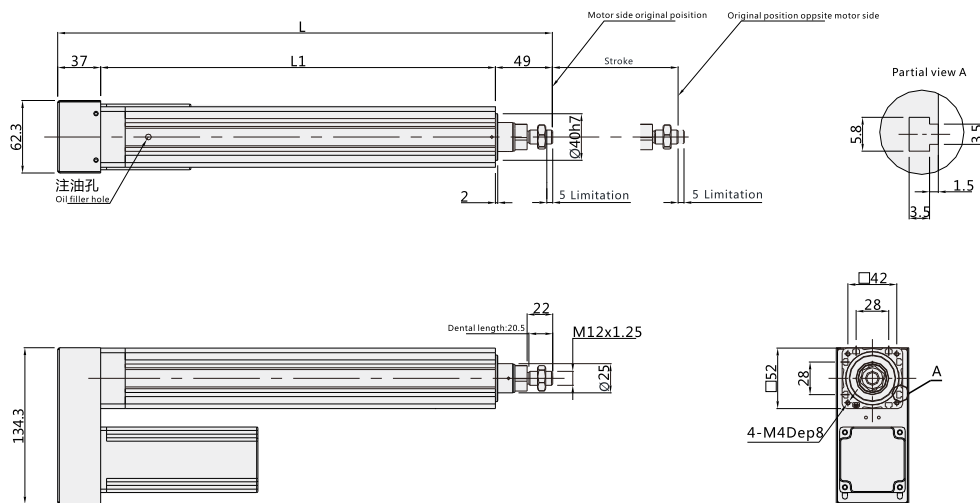


| Working Stroke | 50 | 100 | 150 | 200 | 250 | 300 |
|----------------|-----|-----|-----|-----|-----|-----|
| L1 | 197 | 247 | 297 | 347 | 397 | 447 |
| L | 301 | 351 | 401 | 451 | 501 | 551 |
| Weight KG | 2.1 | 2.4 | 2.7 | 3.0 | 3.3 | 3.6 |

Note: Not including motor weight. *In case special stroke please contact technical services.

BD: Down Side

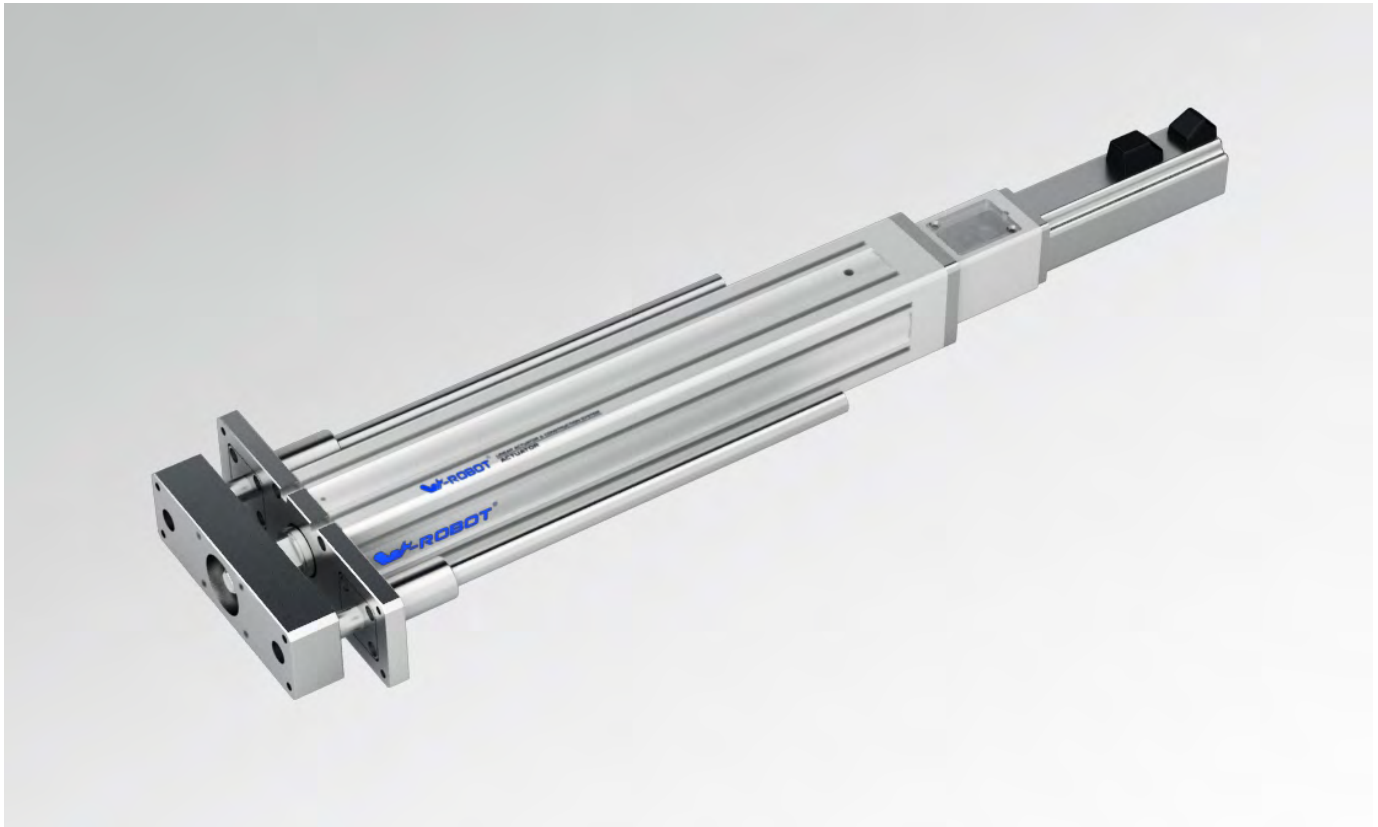
Unit (mm)



| Working Stroke | 50 | 100 | 150 | 200 | 250 | 300 |
|----------------|-----|-----|-----|-----|-----|-----|
| L1 | 189 | 239 | 289 | 339 | 389 | 439 |
| L | 275 | 325 | 375 | 425 | 475 | 525 |
| Weight KG | 2.5 | 2.8 | 3.1 | 3.4 | 3.7 | 4 |

Note: Not including motor weight. *In case special stroke please contact technical services.

VZ5D



■ Motor direction



■ Guide for Model Selection

VZ5D — L10 — S100 — BC — ZP10B — MS3

| Base Style | | Ball Screw Lead | | Stroke(mm) | Motor way | | Motor Type | | Motor power | | Original Sensor External | | Sensor switch | | Sensor type | | Parts/Non-standard, d.c., | |
|------------|-----------------|-----------------|------|------------|-----------|-----------|------------|------------|-------------|-------|--------------------------|-----------------|---------------|------|-------------|-----|---------------------------------------|----------------------|
| VZ | VZ series | L5 | 5mm | 50-300 | BC | External | P | Panasonic | 10 | 100W | MS | Magnetic sensor | 1 | 1pcs | No | NPN | No | Standard type |
| 5 | Body width52 | L10 | 10mm | | BD | Down Side | M | Mitsubishi | 57 | 57-Ø8 | | | 2 | 2pcs | P | PNP | A02 | With 2 pcs pedestals |
| D | With ball screw | | | | | Y | Yaskawa | Brakes | | 3 | | | 3pcs | | | D01 | Installation hole customization | |
| | | | | | | T | Delta | No | No brake | E | | No sensor | | | | M01 | Motor installation hole customization | |
| | | | | | | W | W-Robot | B | With brake | | | | | | | S01 | Stroke customization | |

*For Z: Motor is from clients

Ball Screw Drive Normal Environment
Timing Belt Drive Normal Environment
Ball Screw Drive Dust-free Environment
Timing Belt Drive Dust-free Environment
Timing Belt Drive Normal Environment
Dual Motors Series
Clipping Type robot
Electric Cylinder
Rotation Axis
Electric Gripper
Miniature
Linear Motor
Multi-axis Actuator
Cartesian 4-Axis Robot
Scara Robot
Six-Axis Robot

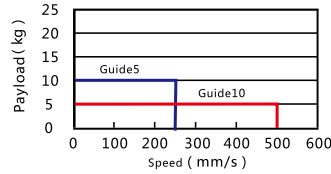
Specification

| | | |
|----------------------------------------------------|------------------------------|------------|
| Motor power AC (W) | 100W/57 Closed loop stepper | |
| BallScrew ϕ | (C7) | 12 |
| Repeatability | (C7) | ± 0.01 |
| BallScrew Lead(mm) | 5 | 10 |
| MaximumSpeed(mm/sec) 3000 Motor Speed(rpm/mim) | 250/50 | 500/100 |
| Maximum Payload(kg) | Horizontal | 30/30 |
| | Vertical | 10/16 |
| Recommended acceleration | 1.5/0.5 | 3/1 |
| RatedThrust(N) | 320/_ | 160/_ |
| No rotating repeatability of the Electric cylinder | $\pm 1^\circ$ | |
| Coupling (mm) (Motor side) x (Ball Screw Side) | 8x8 (Length40mm) | |
| | 100W /57 Closed loop stepper | |
| Motor Output | 50~300 (50 interval) | |
| Home Sensor | Outside | DS1-HN-020 |

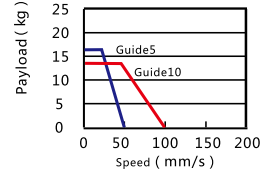
- Above repeatability is within strok 300mm,if logner travel needed,it will be lower.
- Please cooperate with external guide rail or guide rod and others guide device assured the Straight movements.
- Keep the electric cylinder sharft running without the radial loading , cooperated with external guide rail or guide rod and others guide device.
- Please note figure 2 motor size is same with table 1, or needed to replace coupler and motor holder.

Speed - Payload

Vertical - 100W Servo motor

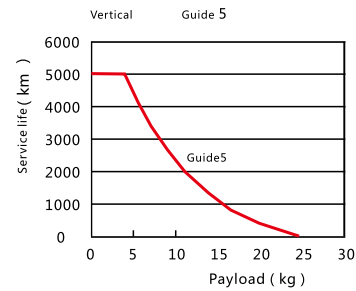


Vertical - 57 Closed-loop step by step



Service life

The lifetime of the below specifications are 5000km.

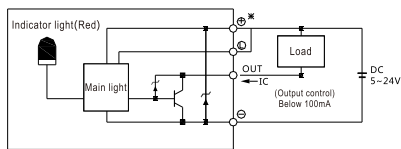


Servo Motor Matches List

(Table 1)

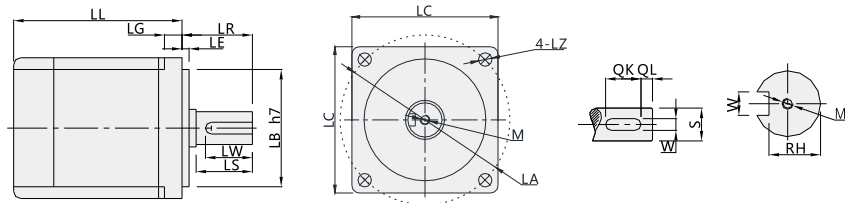
| Servo motor size | | | | | | | | | | | | | | | | | | | |
|------------------|------------|--------------|-------------------------|------------|-------|-------|-----|-----|------|-----|----|-----|-----|----|-----|--------|-------|----|---|
| Power(W) | Brand | Type | LL | LL(Brakes) | LA | LE | LZ | LC | LG | LW | RH | W | LR | S | LB | M | QK | QL | |
| 100W | Panasonic | MSMD012G1□ | V:With brake U:No brake | 92 | 122 | 45 | 3 | 3.4 | 38 | 6 | 14 | 6.2 | 3h9 | 25 | 8h6 | 30h7 | M3x6L | - | - |
| | Delta | ECMA-C2040□S | S:With brake R:No brake | 100.6 | 136.6 | 46 | 2.5 | 4.5 | 40 | 5 | 16 | 6.2 | 3 | 25 | 8h6 | 30h7 | M3x8L | - | - |
| | Mitsubishi | HC-KFS12□K | B:With brake □:No brake | 86.5 | 124.5 | 46 | 2.5 | 4.5 | 42 | 5 | - | - | - | 25 | 8h6 | 30h7 | - | - | - |
| 57stepper | W-ROBOT | W57S□ | B:With brake □:No brake | 81 | 97 | 66.67 | 1.6 | 4.5 | 56.4 | 4.8 | 15 | 7.2 | - | 21 | 8h6 | 38.1h7 | - | - | - |

Wiring drawing of inductor(original point and endpoint)



(Figure 1)

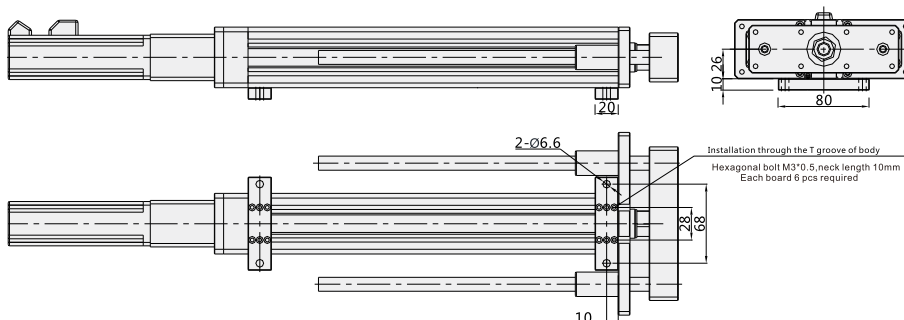
Motor size



(Figure 2)

Optional accessories<Pedestal>

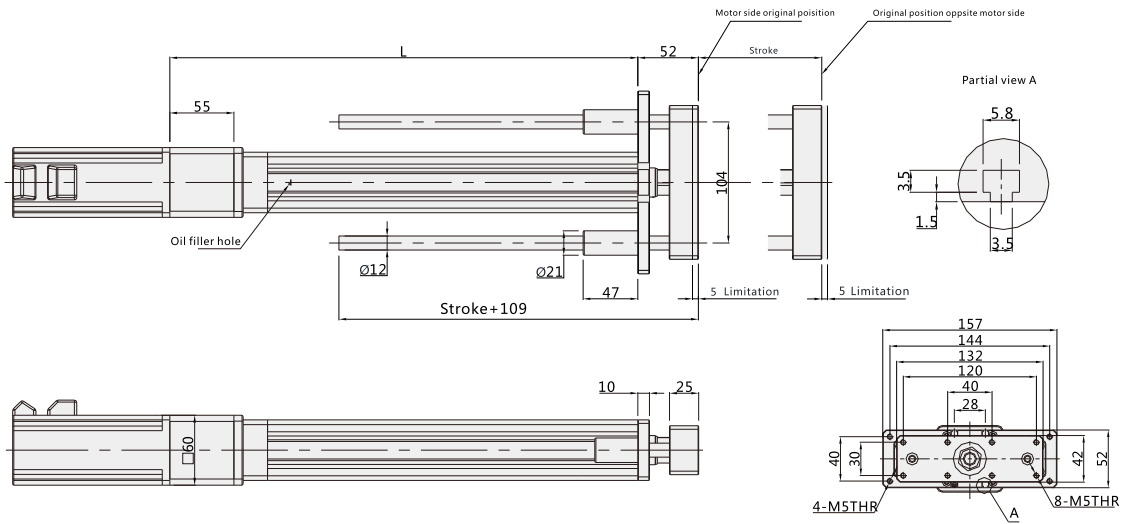
*optional parts: Two unit pedestals



Ball Screw Drive Normal Environment
Timing Belt Drive Normal Environment
Ball Screw Drive Dust-free Environment
Timing Belt Drive Dust-free Environment
Timing Belt Drive Normal Environment
Dual Motors Series
Gripping Type robot
Electric Cylinder
Rotation Axis
Electric Gripper
Miniature
Linear Motor
Multi-axis Actuator
Cartesian 4-Axes Robot
Scara Robot
Six-Axes Robot

BC: External

Unit (mm)

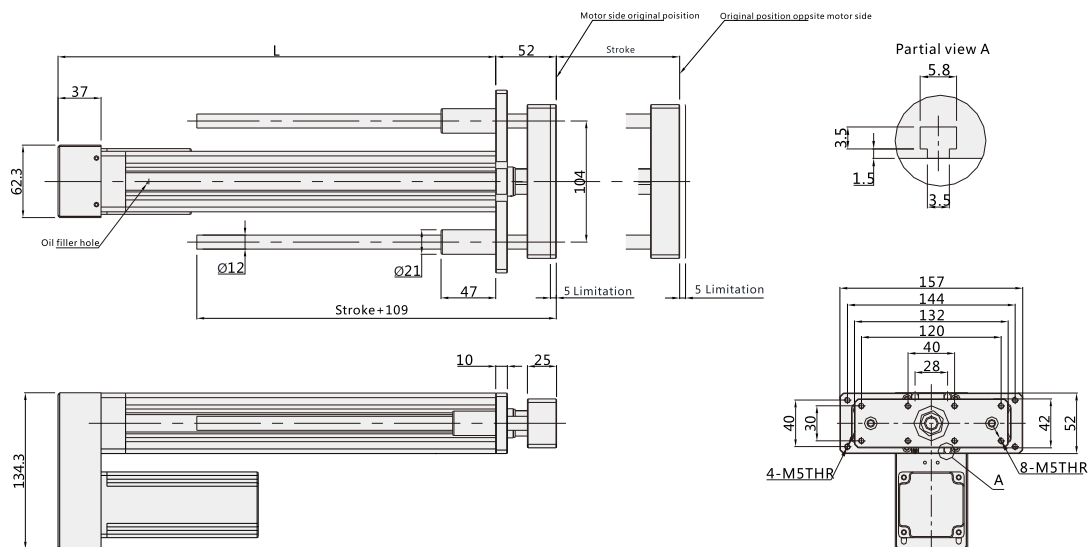


| | | | | | | |
|----------------|-----|-----|-----|-----|-----|-----|
| Working Stroke | 50 | 100 | 150 | 200 | 250 | 300 |
| L | 252 | 302 | 352 | 402 | 452 | 502 |
| Weight KG | 3.0 | 3.4 | 3.8 | 4.2 | 4.6 | 5.0 |

Note: Not including motor weight. *In case special stroke please contact technical services.

BD: Down Side

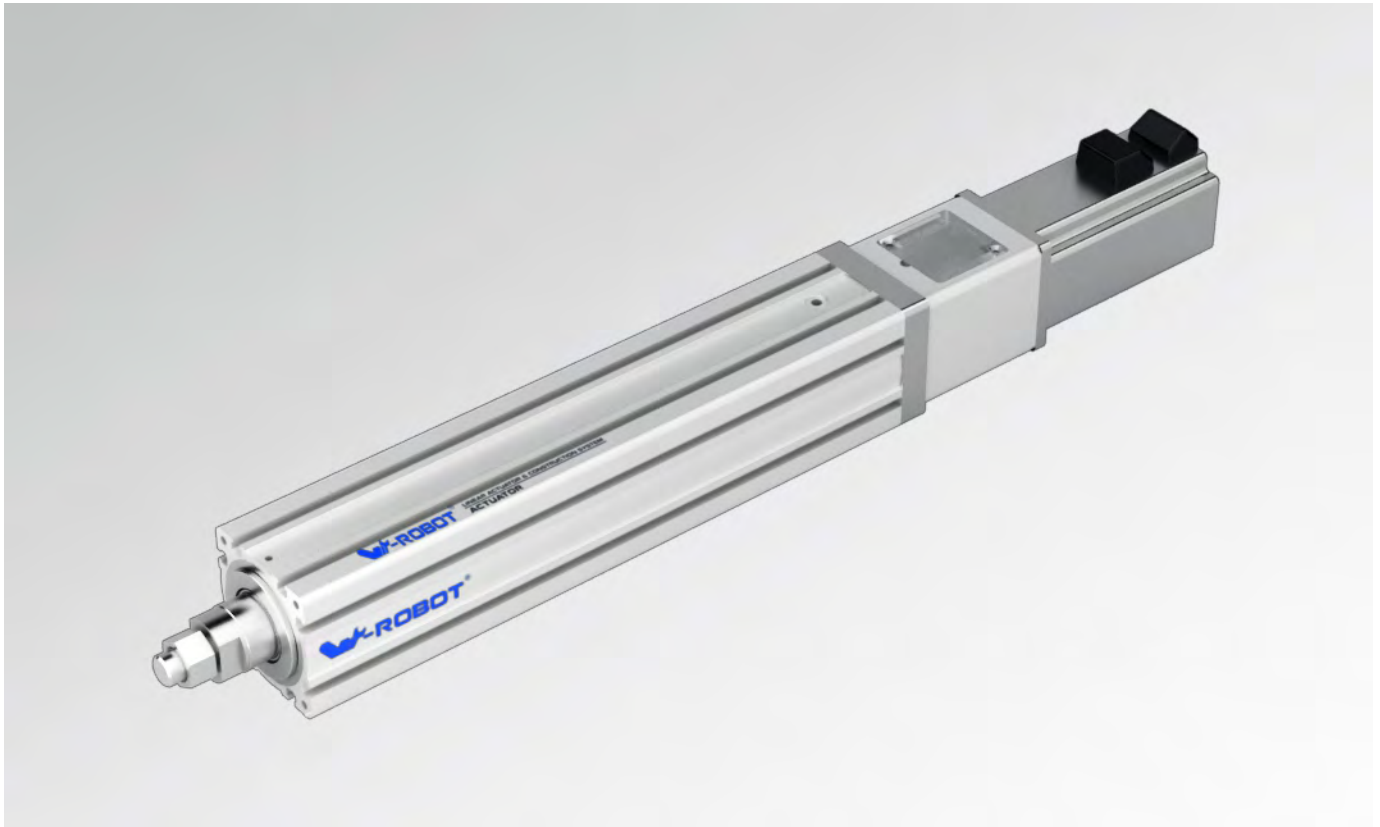
Unit (mm)



| | | | | | | |
|----------------|-----|-----|-----|-----|-----|-----|
| Working Stroke | 50 | 100 | 150 | 200 | 250 | 300 |
| L | 226 | 276 | 326 | 376 | 426 | 476 |
| Weight KG | 3.3 | 3.7 | 4.1 | 4.5 | 4.9 | 5.3 |

Note: Not including motor weight. *In case special stroke please contact technical services.

Ball Screw Drive Normal Environment
Timing Belt Drive Normal Environment
Ball Screw Drive Dust-free Environment
Timing Belt Drive Dust-free Environment
Timing Belt Drive Normal Environment
Dual Motors Series
Gripping Type robot
Electric Cylinder
Rotation Axis
Electric Gripper
Miniature
Linear Motor
Multi-axis Actuator
Cartesian 4-Axis Robot
Scara Robot
Six-Axis Robot



■ Motor direction



BC

BD

■ Guide for Model Selection

VZ6 — **L16** — **S100** — **BC** — **ZP40B** — **MS3** —

| Base Style | | Ball Screw Lead | | Stroke(mm) | Motor way | | Motor Type | | Motor power | | Original Sensor External | | Sensor switch | | Sensor type | | Parts/Non-standard, d.c. | |
|------------|--------------|-----------------|------|------------|-----------|-----------|------------|------------|-------------|----------|--------------------------|-----------------|---------------|------|----------------------|---------------------------------------|--------------------------|---------------------------------|
| VZ | VZ series | L5 | 5mm | 50-500 | BC | External | P | Panasonic | 40 | 400W | MS | Magnetic sensor | 1 | 1pcs | No | NPN | No | Standard type |
| 6 | Body width65 | L10 | 10mm | | BD | Down Side | M | Mitsubishi | 57 | 57-08 | | | 2 | 2pcs | P | PNP | A02 | With 2 pcs pedestals |
| | | L16 | 16mm | | | | Y | Yaskawa | Brakes | | | | 3 | 3pcs | | | D01 | Installation hole customization |
| | | L20 | 20mm | | | | T | Delta | No | No brake | E | | No sensor | | M01 | Motor installation hole customization | | |
| | | | | | | W | W-Robot | B | With brake | | | | | S01 | Stroke customization | | | |

* For Z: Motor is from clients

Ball Screw Drive Normal Environment
 Timing Belt Drive Normal Environment
 Ball Screw Drive Dust-free Environment
 Timing Belt Drive Dust-free Environment
 Timing Belt Drive Normal Environment
 Dual Motors Series
 Electric Cylinder Gripping Type robot
 Electric Gripper Rotation Axis
 Linear Motor Miniature
 Cartesian 4-Axis Robot
 Scara Robot
 Six-Axis Robot

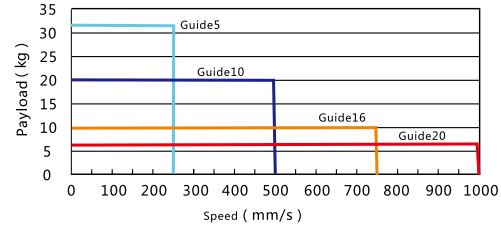
Specification

| | | | | | |
|----------------------------------------------------|-----------------------------|------------------------|---------|----------|-------|
| Motor power AC (W) | 400W/57 Closed loop stepper | | | | |
| BallScrew \varnothing | (C7) | 16 | | | |
| Repeatability | (C7) | ± 0.01 | | | |
| BallScrew Lead(mm) | 5 | 10 | 16 | 20 | |
| MaximumSpeed(mm/sec) 3000 Motor Speed(rpm/mim) | 250/50 | 500/100 | 800/160 | 1000/200 | |
| Maximum Payload(kg) | Horizontal | 100/70 | 80/48 | 43/30 | 35/20 |
| | Vertical | 32/25 | 20/15 | 10/8 | 8/6 |
| Recommended acceleration | 1.5/0.5 | 3/1 | 3/1 | 3/1 | |
| RatedThrust(N) | 1380/_ | 690/_ | 433/_ | 345/_ | |
| No rotating repeatability of the Electric cylinder | $\pm 1^\circ$ | | | | |
| Coupling (mm) (Motor side) x (Ball Screw Side) | 14x10 (Length40mm) | 8x10 (Length29mm) | | | |
| | 400W | 57 Closed loop stepper | | | |
| Motor Output | 50~500 (50 interval) | | | | |
| Home Sensor | Outside | DS1-EN-020 | | | |

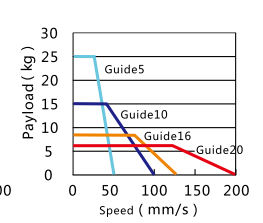
- Above repeatability is within strok 300mm,if logner travel needed,it will be lower.
- Please cooperate with external guide rail or guide rod and others guide device asured the Straight movements.
- Keep the electric cylinder shaft running without the radial loading , cooperated with external guide rail or guide rod and others guide device.
- Please note figure 2 motor size is same with table 1, or needed to replace coupler and motor holder.

Speed - Payload

Vertical - 400W Servo motor

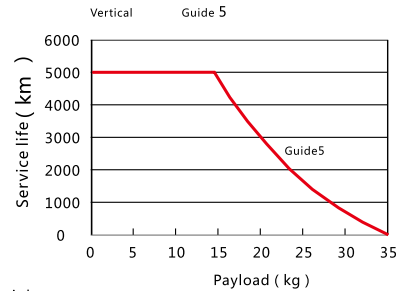


Vertical - 57 Closed loop stepper



Service life

The lifetime of the below specifications are 5000km.



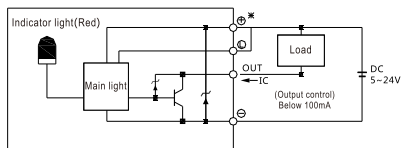
Servo Motor Matches List

(Table 1)

| Servo motor size | | | | | | | | | | | | | | | | | | | |
|------------------|------------|---------------|-------------------------|------------|-------|-------|-----|-----|------|-----|----|-----|-----|------|------|--------|--------|----|---|
| Power(W) | Brand | Type | LL | LL(Brakes) | LA | LE | LZ | LC | LG | LW | RH | W | LR | S | LB | M | QK | QL | |
| 400W | Panasonic | MSMJ042G1□ | V.With brake U.No brake | 99 | 135 | 70 | 3 | 4.5 | 60 | 6.5 | 20 | 11 | 5h9 | 30 | 14h6 | 50h7 | M5x10L | - | - |
| | Delta | ECMA-C20604□S | S:With brake R:No brake | 130.7 | 166.6 | 70 | 3 | 5.5 | 60 | 7.5 | 20 | 11 | 5 | 30 | 14h6 | 50h7 | M4x15L | - | - |
| | | ECMA-C20804□S | S:With brake R:No brake | 112.3 | 152.8 | 90 | 3 | 6.6 | 80 | 8 | 20 | 11 | 5 | 35 | 14h6 | 70h7 | M4x15L | - | - |
| | Mitsubishi | HC-KFS43□K | B:With brake □:No brake | 124.5 | 165.5 | 70 | 3 | 5.8 | 62 | 7 | - | - | 30 | 14h6 | 50h7 | - | - | - | |
| 57stepper | W-ROBOT | W57S□ | B:With brake □:No brake | 81 | 97 | 66.67 | 1.6 | 4.5 | 56.4 | 4.8 | 15 | 7.2 | 3h9 | 21 | 8h6 | 38.1h7 | - | - | - |

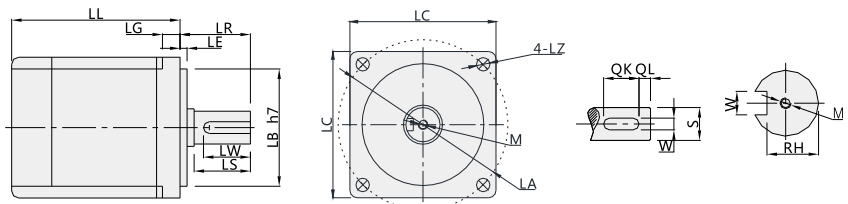
□ Stand for empty

Wiring drawing of inductor(original point and endpoint)



(Figure 1)

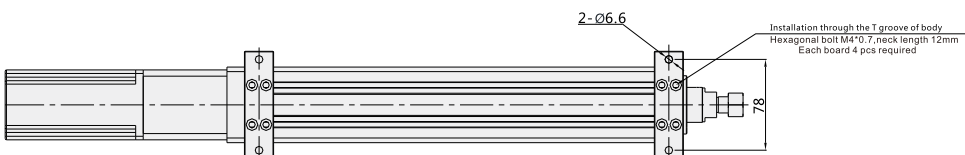
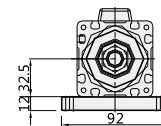
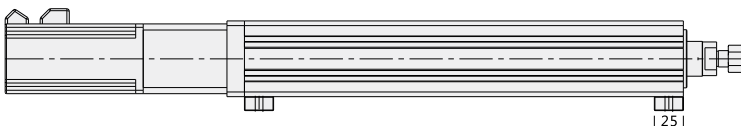
Motor size



(Figure 2)

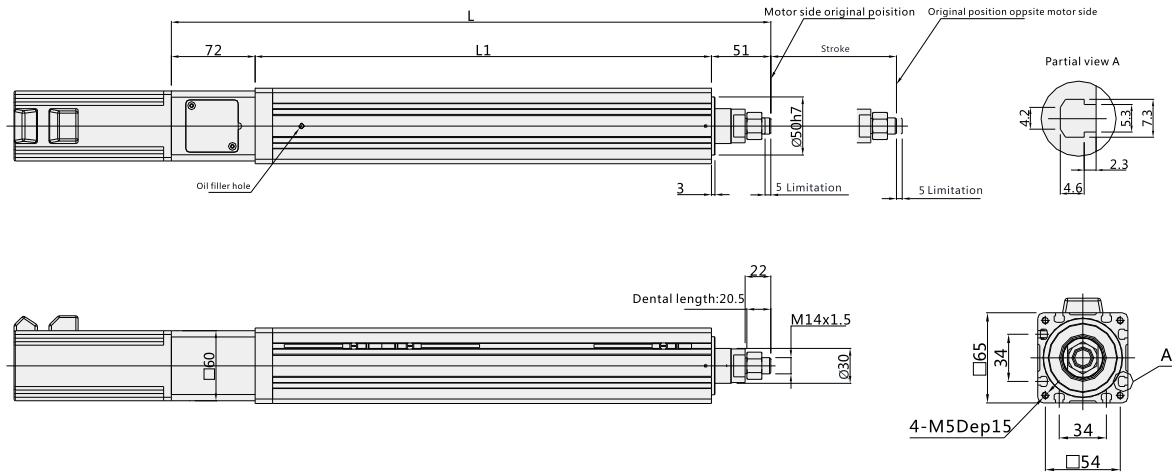
Optional accessories<Pedestal>

*optional parts: Two unit pedestals



BC: External

Unit (mm)

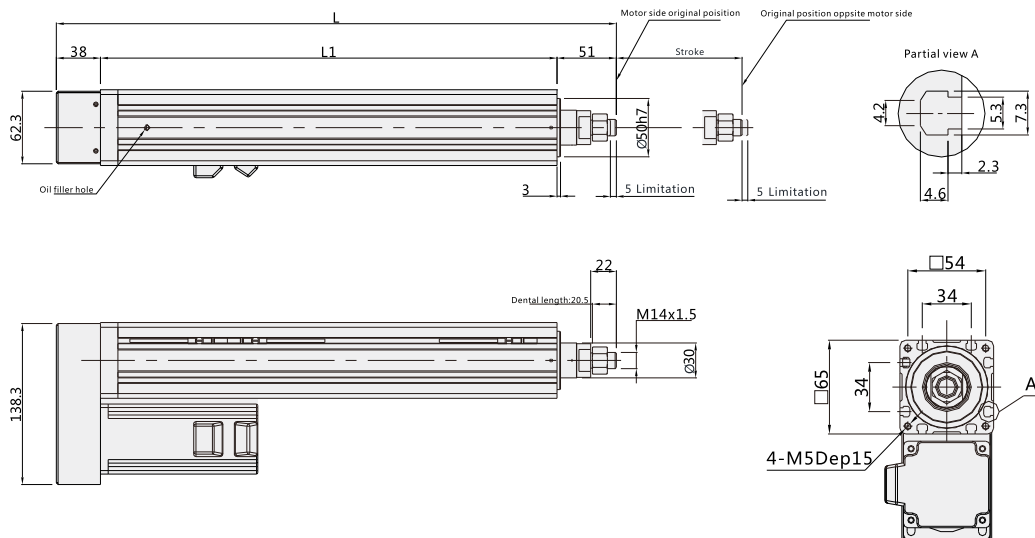


| Working Stroke | 50 | 100 | 150 | 200 | 250 | 300 | 350 | 400 | 450 | 500 |
|----------------|-----|-----|-----|-----|-----|-----|-----|-----|-----|-----|
| L1 | 192 | 242 | 292 | 342 | 392 | 442 | 492 | 542 | 592 | 642 |
| L | 315 | 365 | 415 | 465 | 515 | 565 | 615 | 665 | 715 | 765 |
| Weight KG | 1.9 | 2.4 | 2.9 | 3.4 | 3.9 | 4.4 | 4.9 | 5.4 | 5.9 | 6.4 |

Note: Not including motor weight. *In case special stroke please contact technical services.

BD: Down Side

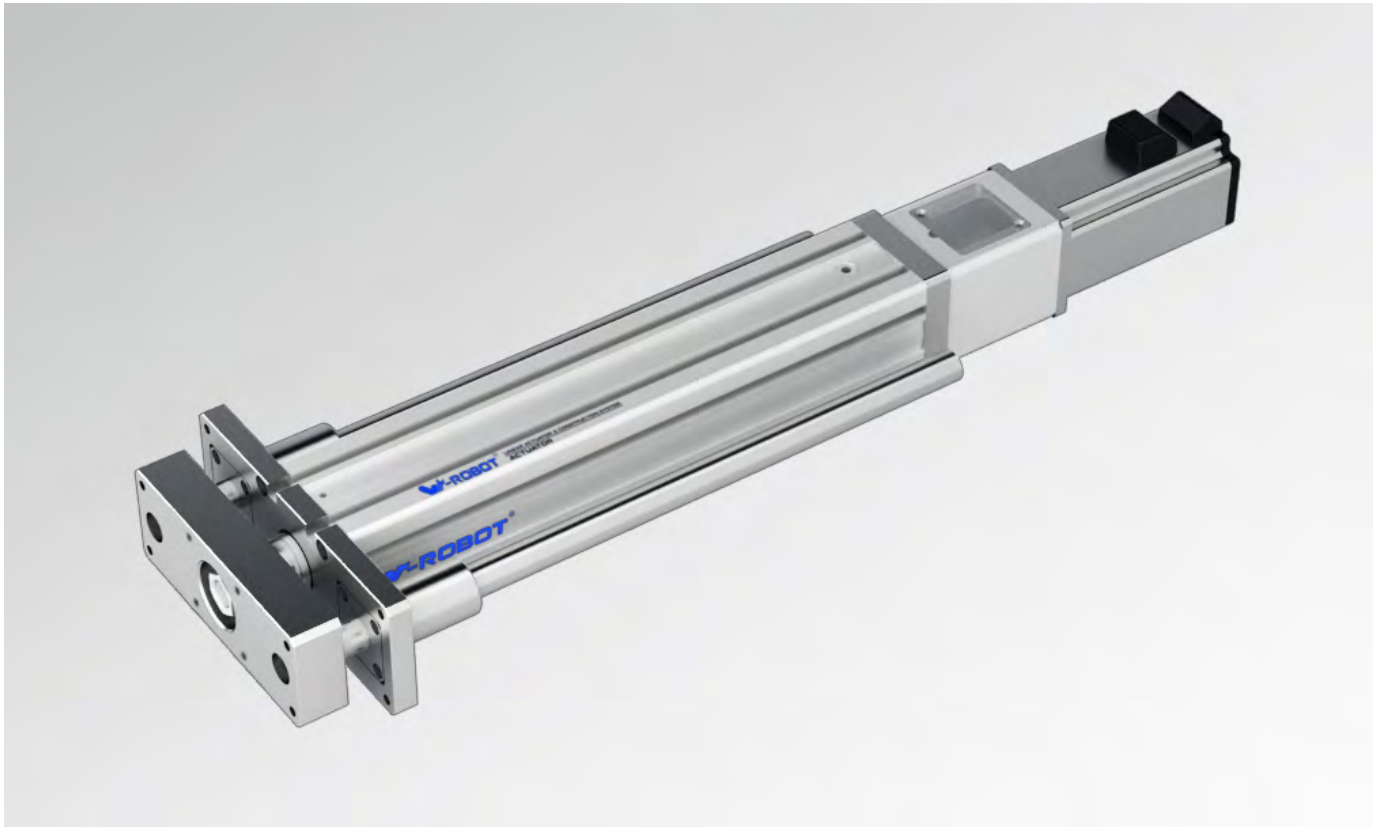
Unit (mm)



| Working Stroke | 50 | 100 | 150 | 200 | 250 | 300 | 350 | 400 | 450 | 500 |
|----------------|-----|-----|-----|-----|-----|-----|-----|-----|-----|-----|
| L1 | 192 | 242 | 292 | 342 | 392 | 442 | 492 | 542 | 592 | 642 |
| L | 281 | 331 | 381 | 431 | 481 | 531 | 581 | 631 | 681 | 731 |
| Weight KG | 2.2 | 2.7 | 3.2 | 3.7 | 4.2 | 4.7 | 5.2 | 5.7 | 6.2 | 6.7 |

Note: Not including motor weight. *In case special stroke please contact technical services.

VZ6D



■ Motor direction

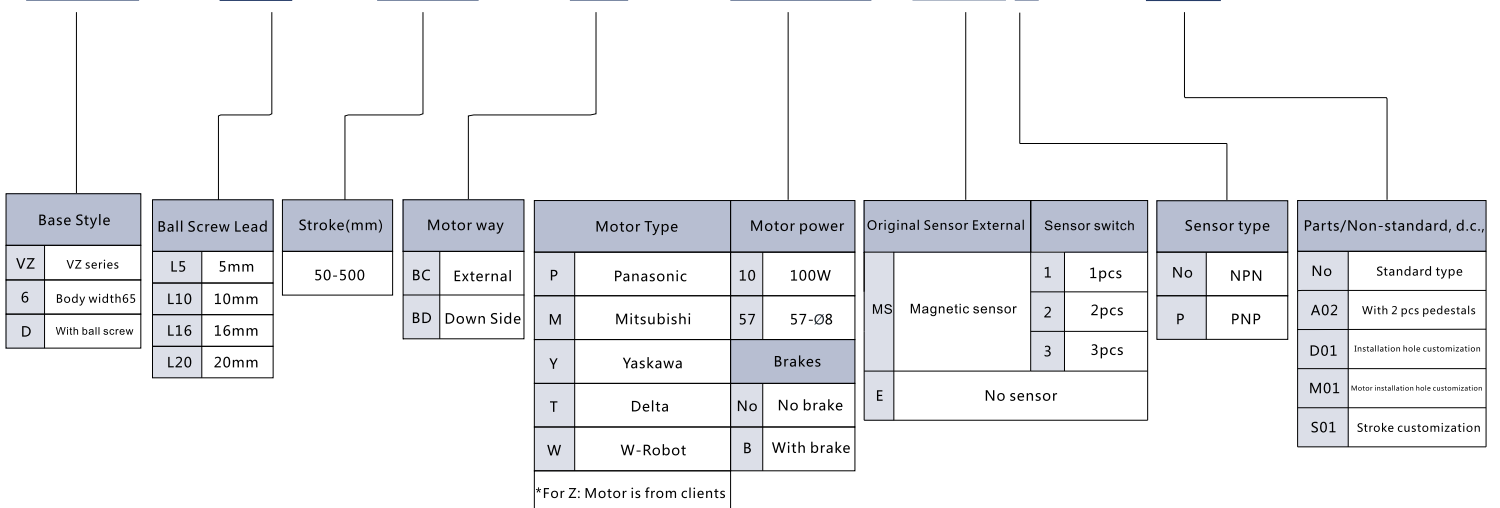


BC

BD

■ Guide for Model Selection

VZ6D — **L16** — **S100** — **BC** — **ZP40B** — **MS3** —



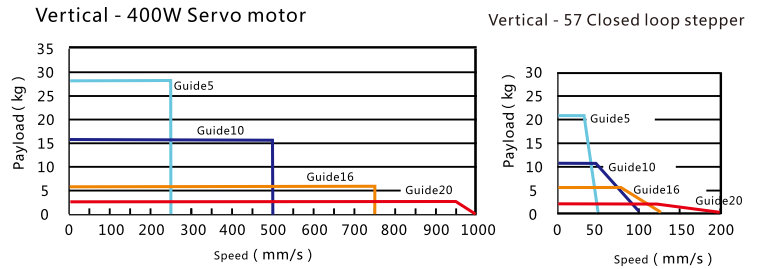
Ball Screw Drive Normal Environment
Timing Belt Drive Normal Environment
Ball Screw Drive Dust-free Environment
Timing Belt Drive Dust-free Environment
Timing Belt Drive Normal Environment
Dual Motors Series
Clipping Type robot
Electric Cylinder
Rotation Axis
Electric Gripper
Miniature
Linear Motor
Multi-axis Actuator
Cartesian 4-Axis Robot
Scara Robot
Six-Axis Robot

Specification

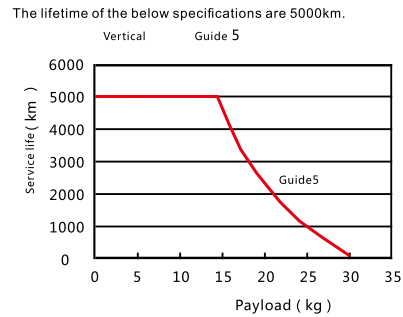
| | | | | | |
|----------------------------------------------------|-----------------------------|------------------------|---------|----------|-------|
| AC (W) Motor power AC (W) | 400W/57 Closed loop stepper | | | | |
| BallScrewØ | (C7) | 16 | | | |
| Repeatability | (C7) | ±0.01 | | | |
| BallScrew Lead(mm) | 5 | 10 | 16 | 20 | |
| MaximumSpeed(mm/sec) 3000 Motor Speed(rpm/mim) | 250/50 | 500/100 | 800/160 | 1000/200 | |
| Maximum Payload(kg) | Horizontal | 90/60 | 70/38 | 33/20 | 23/15 |
| | Vertical | 28/21 | 16/11 | 6/5 | 3/2 |
| Recommended acceleration | 1.5/0.5 | 3/1 | 3/1 | 3/1 | |
| RatedThrust(N) | 1380/_ | 690/_ | 433/_ | 345/_ | |
| No rotating repeatability of the Electric cylinder | ±1° | | | | |
| Coupling (mm) (Motor side) x (Ball Screw Side) | 14x10 (Length40mm) | 8x10 (Length29mm) | | | |
| | 400W | 57 Closed loop stepper | | | |
| Motor Output | 50~500 (50interval) | | | | |
| Home Sensor | Outside | DS1-EN-020 | | | |

- Above repeatability is within strok 300mm,if logner travel needed,it will be lower.
- Please cooperate with external guide rail or guide rod and others guide device assured the Straight movements.
- Keep the electric cylinder sharfit running without the radial loading , cooperated with external guide rail or guide rod and others guide device.
- Please note figure 2 motor size is same with table 1, or needed to replace coupler and motor holder.

Speed - Payload



Service life



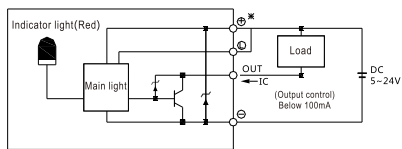
Servo Motor Matches List

(Table 1)

| | | Servo motor size | | | | | | | | | | | | | | | | | |
|-----------|------------|------------------|-------------------------|------------|-------|-------|-----|-----|------|-----|----|-----|-----|----|------|--------|--------|----|---|
| Power(W) | Brand | Type | LL | LL(Brakes) | LA | LE | LZ | LC | LG | LW | RH | W | LR | S | LB | M | QK | QL | |
| 400W | Panasonic | MSMJ042G1□ | V:With brake U:No brake | 99 | 135 | 70 | 3 | 4.5 | 60 | 6.5 | 20 | 11 | 5h9 | 30 | 14h6 | 50h7 | M5x10L | - | - |
| | Delta | ECMA-C20604□S | S:With brake R:No brake | 130.7 | 166.6 | 70 | 3 | 5.5 | 60 | 7.5 | 20 | 11 | 5 | 30 | 14h6 | 50h7 | M4x15L | - | - |
| | | ECMA-C20804□S | S:With brake R:No brake | 112.3 | 152.8 | 90 | 3 | 6.6 | 80 | 8 | 20 | 11 | 5 | 35 | 14h6 | 70h7 | M4x15L | - | - |
| | Mitsubishi | HC-KFS43□K | B:With brake □:No brake | 124.5 | 165.5 | 70 | 3 | 5.8 | 62 | 7 | - | - | - | 30 | 14h6 | 50h7 | - | - | - |
| 57stepper | W-ROBOT | W57S□ | B:With brake □:No brake | 81 | 97 | 66.67 | 1.6 | 4.5 | 56.4 | 4.8 | 15 | 7.2 | 3h9 | 21 | 8h6 | 38.1h7 | - | - | - |

□ Stand for empty

Wiring drawing of inductor(original point and endpoint)

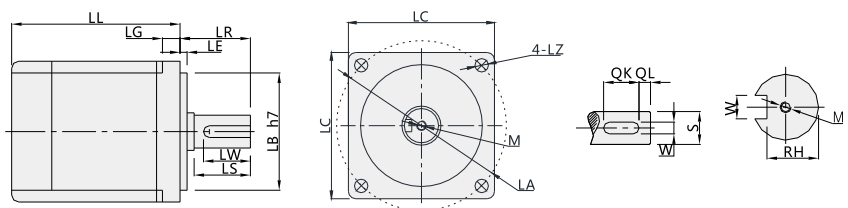


(Figure 1)

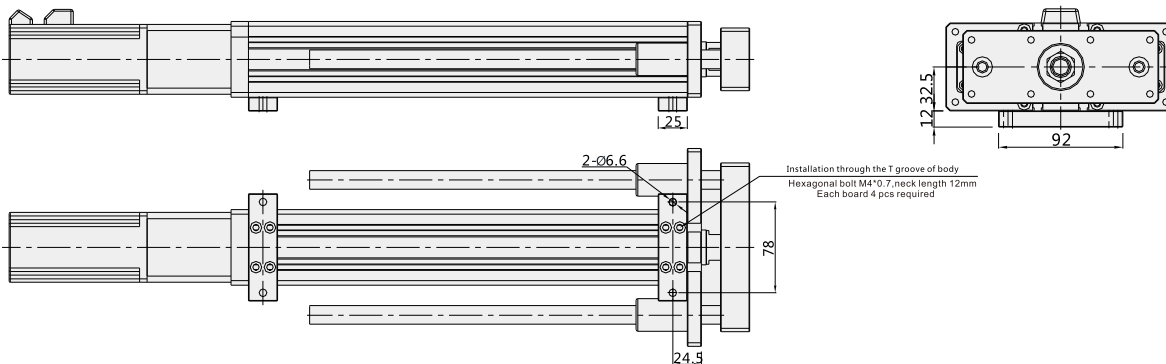
Optional accessories<Pedestal>

*optional parts: Two unit pedestals

Motor size



(Figure 2)

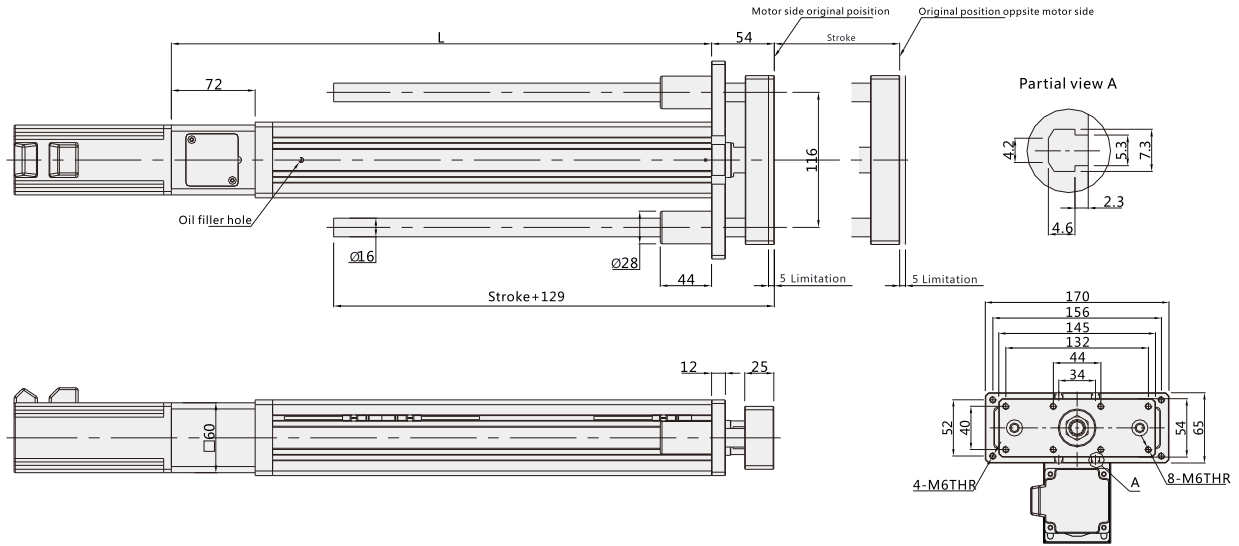


Ball Screw Drive Normal Environment
Timing Belt Drive Normal Environment
Ball Screw Drive Dust-free Environment
Timing Belt Drive Dust-free Environment
Timing Belt Drive Normal Environment
Dual Motors Series
Grinding Type robot
Electric Cylinder
Rotation Axis
Electric Gripper
Linear Motor
M Inertia
Linear Motor
Multi-axis Actuator
Cartesian 4-Axes Robot
Scara Robot
Six-Axes Robot

VZ6D

BC: External

Unit (mm)

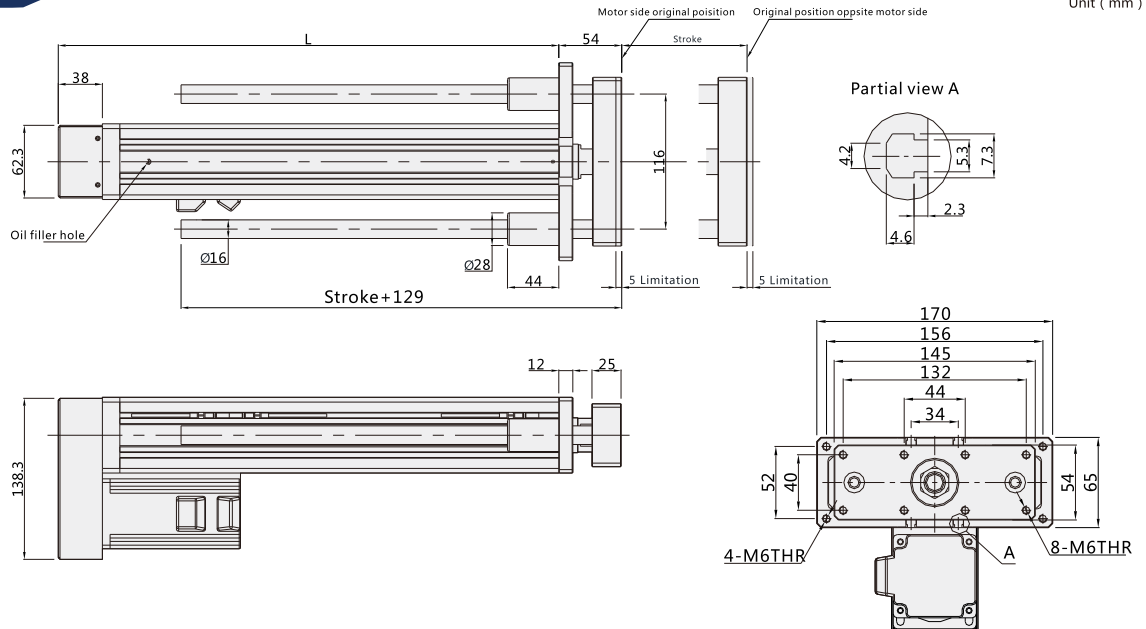


| | | | | | | | | | | |
|----------------|-----|-----|-----|-----|-----|-----|-----|-----|------|------|
| Working Stroke | 50 | 100 | 150 | 200 | 250 | 300 | 350 | 400 | 450 | 500 |
| L | 264 | 314 | 364 | 414 | 464 | 514 | 564 | 614 | 664 | 714 |
| Weight KG | 4.6 | 5.3 | 6.0 | 6.7 | 7.4 | 8.1 | 8.8 | 9.5 | 10.2 | 10.9 |

Note: Not including motor weight. *In case special stroke please contact technical services.

BD: Down Side

Unit (mm)



| | | | | | | | | | | |
|----------------|-----|-----|-----|-----|-----|-----|-----|-----|------|------|
| Working Stroke | 50 | 100 | 150 | 200 | 250 | 300 | 350 | 400 | 450 | 500 |
| L | 230 | 280 | 330 | 380 | 430 | 480 | 530 | 580 | 630 | 680 |
| Weight KG | 4.9 | 5.6 | 6.3 | 7.0 | 7.7 | 8.4 | 9.1 | 9.8 | 10.5 | 11.2 |

Note: Not including motor weight. *In case special stroke please contact technical services.

Ball Screw Drive Normal Environment
Timing Belt Drive Normal Environment
Ball Screw Drive Dust-free Environment
Timing Belt Drive Dust-free Environment
Timing Belt Drive Normal Environment
Dual Motors Series
Gripping Type robot
Electric Cylinder
Rotation Axis
Electric Gripper
Miniature
Linear Motor
Multi-axis Actuator
Cartesian 4-Axis Robot
Scara Robot
Six-Axis Robot



Distributors for Australia & New Zealand

MOTION TECHNOLOGIES PTY LTD

24/22-30 Northumberland Road
Caringbah NSW 2229 Australia
Phone: (02) 9524 4782

sales@motiontech.com.au
www.motiontech.com.au

© 09/11/2020