



MOTION TECHNOLOGIES PTY LTD

HOISTING & LIFTING EQUIPMENT



Model ST-W
with adjustable lifting claw



Model SW-SG
Capacity 1500 kg



Model SW-W-SG
Capacity 1500 kg

Index

Manual winches

Console-mounted winch	2
Wall-mounted winch	4~7
Console-mounted aluminium rope winch	8~10
Sheave block	11

Electric & Pneumatic winches

Electric winch SW-E BETA Proline	12~14
Sheave block	15
Electric winch BETA Silverline	16

Rack & Pinion Jack	18~21
--------------------	-------



Model LB, zinc-plated version
Capacity 1.200 kg

Model LB, zinc-plated version
Capacity 350 kg

Console-mounted winch model LB

Capacity 150 - 1200 kg

Originally developed as offroad winch the console-mounted winch model LB is used today for a variety of lifting and pulling applications.

Features

- Light weight robust stamped steel housing.
- Spur gear drive for optimal efficiency and comfortable handling.
- Automatic load pressure brake for safe holding of the load in any position. An unintentional brake release is prevented.
- All parts are zinc-plated for increased corrosion protection, drum with additional special coating.
- Easy and quick mounting to consoles, even under lifting conditions.

Options

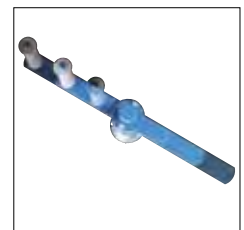
- Stainless steel version (mat. 1.4301) for increased corrosion protection.
- Free wheeling device for a quick manual unrolling of the unloaded rope.
- Variable crank with adjustable crank handle.
- Foldable crank with tiltable handle for use in confined spaces.



Model LB-VA, stainless steel version
Capacity 900 kg



Option: Foldable crank
with tiltable handle for use
in confined spaces.



Option: Variable crank
with adjustable crank
handle.

Technical data model LB

Model	Art.-No. Zinc-plated version	Art.-No. Free wheeling device	Art.-No. Stainless steel version	Capacity 1 st layer kg	Capacity top layer kg	Rope diameter mm	Useable rope length 1 st layer m	Useable rope length max. m	Lift per crank rotation mm	Required crank effort daN	Weight without rope kg
LB 150 VZ	030239016	-	-	150	75	4*	0.8	11	125	17	4.2
LB 350 VZ	030239015	-	-	350	170	4*	1.8	20	125	25	4.8
LB 650 VZ	040239004	-	-	650	290	6*	1	20	55	22	7.3
LB 900 VZ/ARA	040239006	040239007	-	900	400	7*	0.8	14	58	24	10
LB 1200 VZ/ARA	040239008	040239009	-	1200	430	7**	1	26	45	24	12.1
LB 250 VA	-	-	030239017	250	125	4*	1.8	19.5	125	20	4.8
LB 650 VA	-	-	040239012	650	290	6*	1	20	55	22	7.6
LB 900 VA	-	-	030239013	900	320	7*	1	26	45	24	12.1

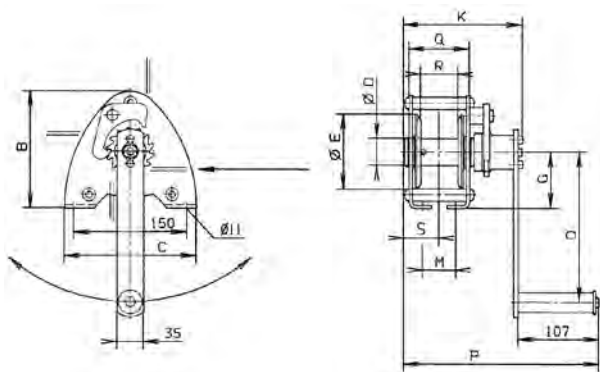
*recommended rope: DIN 3060 FE-znk 1770 sZ-spa

**recommended rope: DIN 3060 SE-znk 2160 sZ-spa

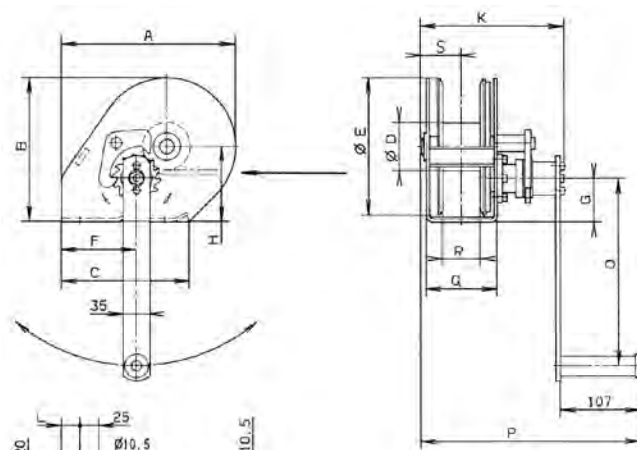
Dimensions model LB

Model	LB 150 VZ	LB 350 VZ	LB 650 VZ	LB 900 VZ LB 900 ARA	LB 1200 VZ LB 1200 ARA	LB 250 VA	LB 650 VA	LB 900 VA
Art.-No. Zinc-plated version	030239016	030239015	040239004	040239006	040239008	-	-	-
Art.-No. Free wheeling device	-	-	-	040239007	040239009	-	-	-
Art.-No. Stainless steel version	-	-	-	-	-	030239017	040239012	030239013
A, mm	-	-	232	232	273	-	232	273
B, mm	155	155	192	192	266	155	192	266
C, mm	175	175	210	210	240	175	210	240
Ø D, mm	36	36	63.5	63.5	63.5	36	63.5	63.5
Ø E, mm	100	100	183	183	255	100	183	255
F, mm	-	-	100	100	78	-	100	78
G, mm	75	75	58	58	75	75	58	75
H, mm	-	-	100	100	138	-	100	138
K, mm	159	189	192	192/226*	192/226*	191.5	190	190
L, mm	-	-	25	25	35	-	25	35
M, mm	45	75	38	38	30	75	38	30
N, mm	-	-	-	-	53	-	-	53
O, mm	200	320	250	320	320	320	250	250
P, mm	260	290	293	293/303*	293/303*	292.5	291	291
Q, mm	81	111	95	95	95	111	95	95
R, mm	50	80	50	50	50	80	50	50
S, mm	48	63	55	55	55	65.5	55	55

*Free wheeling device



Model LB 150 - 350 kg



Model LB 650 - 1200 kg



Wall-mounted winch model SW-W

Capacity 80 - 750 kg

Wall-mounted rope winches of the SW-W model range are intended for fixed stationary mounting inside a building. The steel wire rope is guided to the required suspension point of the load by means of deflection sheaves.

Features

- Robust aluminium housing for models SW-W 80 and SW-W 125, proven steel plate design for models SW-W 300 - 750.
- Spur gear drive for optimal efficiency and comfortable handling. Direct drive for loads up to 125 kg.
- The low-noise safety spring brake safely holds the load in every position.
- Removable hand crank for models SW-W 80 and SW-W 125, foldable crank for models SW-W 300 - 750.
- Easy and quick mounting onto walls.

Options

- Safety retaining spring with removable hand crank.

Technical data model SW-W

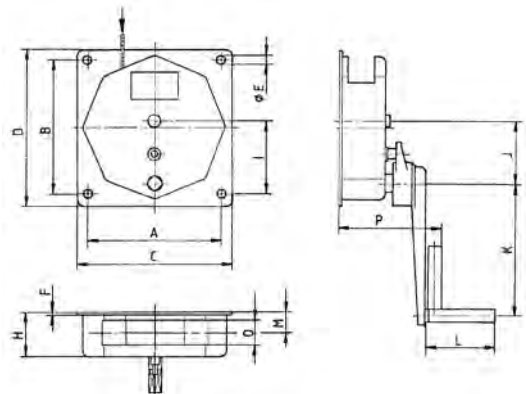
Model	Art.-No.	Capacity 1 st layer kg	Capacity top layer kg	Drum diameter mm	Rope diameter mm	Useable rope length 1 st layer m	Useable rope length top layer m	Lift per crank rotation mm	Required crank effort daN	Weight without rope kg
SW-W 80	040271017	80	45	51	3*	2.4	30	170	12	3
SW-W 125	040271008	125	65	40	4*	2	12	138	13	3
SW-W 300	030271001	300	220	108	5**	2.1	15	68	15	10
SW-W 500	030271136	500	350	108	6**	2.4	15	35	13	11
SW-W 750	030271019	750	550	108	7**	2	10	35	20	11

*recommended rope: DIN 3055 FE-znk 1770 sZ-spa

**recommended rope: DIN 3060 FE-znk 1770 sZ-spa

Dimensions model SW-W

Model	SW-W 80	SW-W 125	SW-W 300	SW-W 500	SW-W 750
Art.-No.	040271017	040271008	030271001	030271136	030271019
A, mm	110	110	250	250	250
B, mm	110	110	250	250	250
C, mm	130	130	290	290	290
D, mm	130	130	290	290	290
Ø E, mm	9	9	14.5	14.5	14.5
F, mm	15	15	2	2	2
H, mm	121	121	85	85	85
I, mm	55	55	138	138	138
J, mm	-	-	117	117	117
K, mm	250	250	250	250	250
L, mm	130	130	130	130	130
M, mm	68	68	39	39	39
O, mm	60	60	50	50	50
P, mm	275	275	192	192	192



Wall-mounted winch model SW-W ALPHA

Capacity 300 - 1000 kg

A versatile wall-mounted winch for an easy lifting of loads.

Features

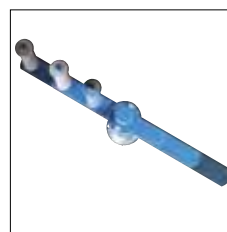
- Light weight robust stamped steel housing and compact design.
- Spur gear drive for optimal efficiency and comfortable handling.
- Rope lead-offs to all directions.
- All parts are zinc-plated for increased corrosion protection, drum with additional special coating.
- Integrated crank with load pressure brake for safe holding of the load.
- Easy and quick mounting onto walls.

Options

- Foldable crank with tiltable handle for use in confined spaces.
- Variable crank with adjustable crank handle.



Option: Foldable crank with tiltable handle for use in confined spaces.



Option: Variable crank with adjustable crank handle.

Technical data model SW-W ALPHA

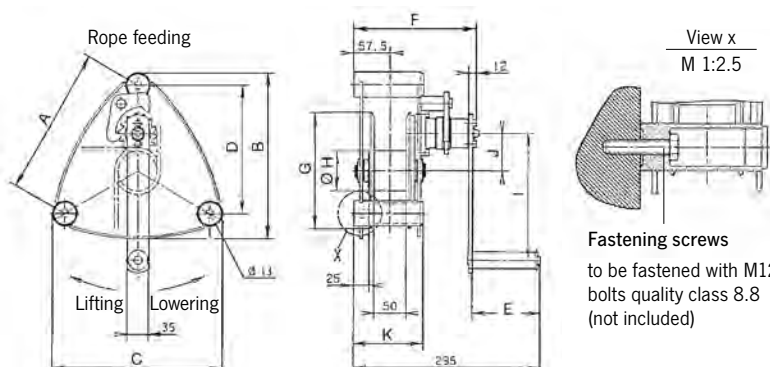
Model	Art.-No.	Capacity 1 st layer kg	Capacity top layer kg	Drum length mm	Rope diameter* mm	Useable rope length 1 st layer m	Useable rope length top layer m	Lift per crank rotation mm	Required crank effort daN	Weight without rope kg
ALPHA 300	030272006	300	130	50	5	1.3	28	57	13	10
ALPHA 500	030272005	500	230	50	6	1	20	55	17	10
ALPHA 750	030272002	750	270	50	7	1	26	45	17	16
ALPHA 1000	030272001	1000	360	50	7	1	26	45	18	16

*recommended rope: DIN 3060 FE-znk 1770 sZ-spa

Dimensions model SW-W ALPHA

Model	ALPHA 300	ALPHA 500	ALPHA 750	ALPHA 1000
Art.-No.	030272006	030272005	030272002	030272001
A, mm	234	234	306	306
B, mm	262	262	337	337
C, mm	274	274	357	357
D, mm	203	203	265	265
E, mm	107	107	107	107
F, mm	194	194	194	194
G, mm	183	183	255	255
H Ø, mm	63	63	63.5	63.5
I, mm	200	250	250	320
J, mm	58.6	58.6	92.5	92.5
K, mm	109.5	109.5	107	107

! For a better guiding of the rope to the suspension point we recommend the use of sheaves or sheave blocks, see page 89.





Wall-mounted winch with worm gear drive model SW-W-SGG

Capacity 250 - 750 kg

The robust manual rope winches with enclosed worm gear are used in the agricultural industry and in the marine sector.

Features

- Winch housing with enclosed worm gear and additional load pressure brake of solid casting design for a long service life.
- The oil bath lubricated worm gear ensures quiet running characteristics.
- Easy and quick mounting.
- The crank arm is adjustable and makes it possible to work faster with small loads.

Options

- Special paint finish for improved corrosion protection
- Foldable crank with tiltable handle for use in confined spaces.
- Grease lubrication – for modified mounting position
- Grooved rope drum for improved guidance of the rope.
- Drum with separation web for operation with several ropes.

Technical data model SW-W-SGG

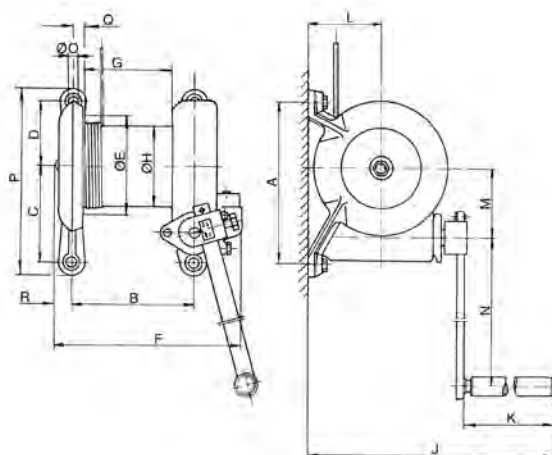
Model	Art.-No.	Capacity 1 st layer kg	Capacity top layer kg	Drum diameter mm	Rope diameter* mm	Useable rope length 1 st layer m	Useable rope length top layer m	Lift per crank rotation mm	Required crank effort daN	Weight without rope kg
SGG 250	030242004	250	210	96	5	4.8	17.9	20	9.2	12
SGG 500	030243000	500	425	125	6	8.1	28.8	26	14.5	22
SGG 750	030244007	750	624	150	8	9.2	48	20	16	43

*recommended rope: DIN 3060 FE-znk 1770 sZ-spa

Technical data model SW-W-SGG

Model	SGG 250	SGG 500	SGG 750
Art.-No.	030242004	030243000	030244007
A, mm	205	250	330
B, mm	137	190	243
C, mm	120	150	205
D, mm	85	100	125
Ø E, mm	135	182	240
F, mm	219	282	350
G, mm	94	138	182
Ø H, mm	96	125	150
J, mm	310	476	576
K, mm	108	238	238
L, mm	96	112	160
M, mm	79	101	146
N, mm	295	430	440
Ø O, mm	12	14	20
P, mm	237	290	390
Q, mm	13	18	20
R, mm	21	25	32

Fall arrest blocks for the transportation of persons, see page 277.



Wall-mounted winch with worm gear drive model SW-W-SGO

Capacity 250 - 5000 kg

Wall-mounted winch with worm gear drive and load pressure brake for efficient lifting of heavy loads.

Features

- Housing and rope drums made out of robust steel plate.
- Worm gear drive with additional load pressure brake for safe holding of the load.
- Roller bearings ensure smooth running of the rope and increased lifetime of the winch.
- Second speed for fast lifting of smaller loads, resulting in lowest possible handle effort and rapid winding of the rope (for capacities of 2000 kg and above).
- Large drum capacity with two rope outlets.
- Variable crank with adjustable crank handle for capacities up to 1500 kg.
- Easy and quick mounting.



Model SW-W-SGO
Capacity 1500 kg

Options

- Corrosion resistant version
- Drum with separation web for operation with several ropes.
- Grooved rope drum for improved guidance of the rope.

Technical data model SW-W-SGO

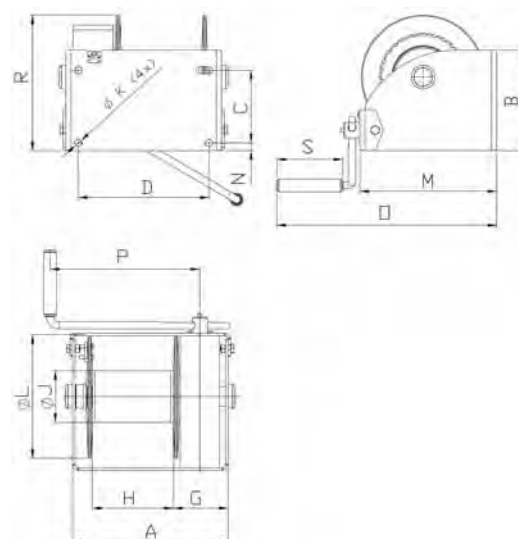
Model	Art.-No.	Capacity	Capacity	Rope diameter*	Useable rope length 1 st layer m	Useable rope length top layer m	Lift per crank rotation mm	Required crank effort daN	Weight without rope kg
		1 st layer kg	top layer kg						
SGO 250	040251003	250	100	5	2.3	44	29	6	13
SGO 500	040252026	500	238	6	3.7	54	30	11	16
SGO 1000	040253006	1000	500	9	4.5	46	21	10.6	26
SGO 1500	040253000	1500	850	10	4.5	38	18	16	28
SGO 2000	030254002	2000	1100	13	4	37	8/16**	9/18**	60
SGO 3000	030255009	3000	2000	16	5	34.5	7/14**	12/24**	78
SGO 5000	030256013	5000	3300	20	4.5	33.8	8/16**	25.2/50.4**	105

*recommended rope: DIN 3060 FE-znk 1770 sZ-spa

**1st/2nd speed

Dimensions model SW-W-SGO

Model	SGO 250	SGO 500	SGO 1000	SGO 1500	SGO 2000	SGO 3000	SGO 5000
Art.-No.	040251003	040252026	040253006	040253000	030254002	030255009	030256013
A, mm	238	269	302	302	410	436	436
B, mm	145	160	195	250	310	365	425
C, mm	100	115	141	178	196	251	316
D, mm	192	223	254	254	360	386	386
G, mm	106	107	110	111	137	137	137
H, mm	102	131	160	160	176	204	200
J Ø, mm	48	70	102	102	133	165	219
K Ø, mm	14	14	17	17	25	25	25
L Ø, mm	160	190	240	240	312	376	437
M, mm	191	221	266	278	383	443	495
N, mm	15	15	15	15	45	47	60
O, mm	354	384	429	441	-	-	-
P, mm	280	325	350	350	380	380	380
R, mm	171	192	264	306	420	527	604
S, mm	130	130	130	130	220	220	220





Model SW-K GAMMA
Capacity 800 kg

Pfaff winches are not designed for passenger elevation applications and must not be used for this purpose.



Model SW-K GAMMA
Capacity 500 kg

Console-mounted aluminium rope winch model SW-K GAMMA

Capacity 200 - 800 kg

Due to its rugged design, the aluminium rope winch is suitable for operation outdoors.

Features

- Compact aluminium housing and enclosed sprocket wheel drive. From a capacity of 500 kg with speed increasing ratio for small loads and quicker winding and unwinding of the unloaded rope.
- Spur gear drive for optimal efficiency and comfortable handling.
- Enclosed gear for the protection of parts inside, also for arduous applications.
- Low-friction shaft sliding bearings for improved rope lead-off and a longer service life of the winch.
- Wide rope drum for a large rope capacity with two rope attachment points.
- Easy and quick mounting.
- With integrated safety spring brake system and removable crank. The winches can be operated from either side.

Options

- Increased corrosion protection owing to additional paint finish.
- Drum separation web for double rope operation

Technical data model SW-K GAMMA

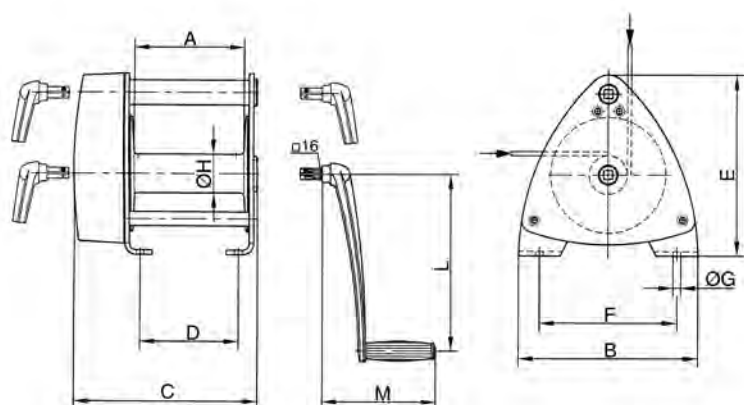
Model	Art.-No.	Capacity 1 st layer	Capacity top layer	Rope diameter*	Useable rope length 1 st layer	Useable rope length top layer	Lift per crank rotation	Required crank effort	Ratio	Weight without rope
		kg	kg	mm	m	m	mm	daN		kg
GAMMA 200	040270004	200	110	4	3.6	40	195	19	-	6
GAMMA 500	040270001	500	200	6	4.2	50	60/400**	12	6.57:1	14
GAMMA 800	040270006	800	350	7	5.3	78	36/280**	18	7.57:1	16

*recommended rope: DIN 3060 FE-znk 1770 sZ-spa

**load/speed increasing ratio

Dimensions model SW-K GAMMA

Model	GAMMA 200	GAMMA 500	GAMMA 800
Art.-No.	040270004	040270001	040270006
A, mm	120	120	200
B, mm	160	220	326
C, mm	192	330	336
D, mm	152	100	180
E, mm	165	267	327
F, mm	135	125	250
G Ø, mm	9.5	11	14
H Ø, mm	50	60	70
L, mm	320	250	320
M, mm	207	165	207



Compact aluminium rope winch with free-wheeling device model SW-KAL

Capacity 750 - 1120 kg

Console-mounted rope winches are used for superstructures on vehicles and trailers and when lifting and lowering loads.

Features

- Self-locking worm gear, free-wheeling device for ease of operation.
- Enclosed gear for the protection of internal parts, also for arduous applications.
- Low-friction shaft bearings for a longer service life of the winch.
- Easy and quick mounting.

Options

- Increased corrosion protection owing to additional paint finish.
- Mirror-image design.
- Design without free-wheeling device.
- Removable crank.



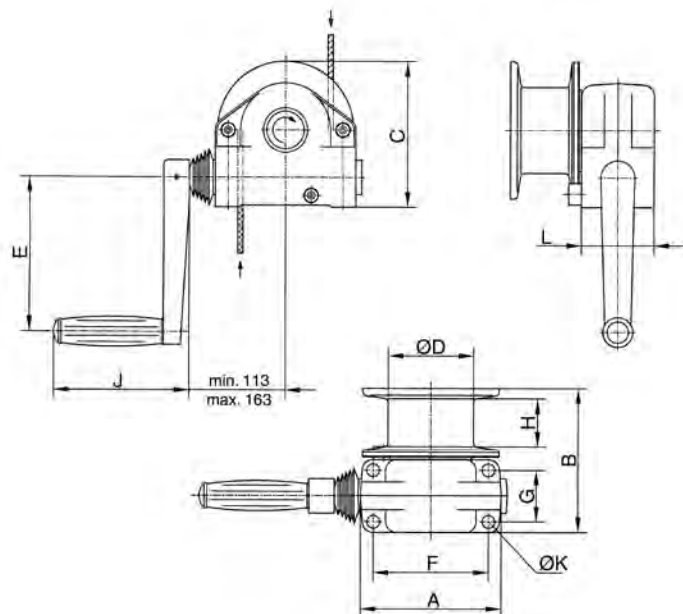
Technical data model SW-KAL

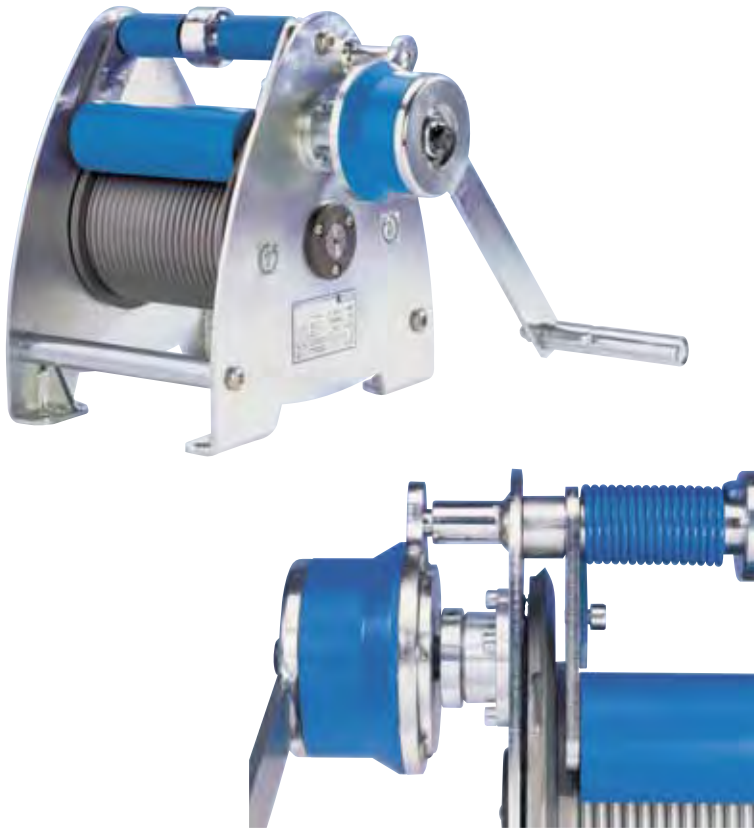
Model	Art.-No.	Capacity 1 st layer kg	Capacity top layer kg	Drum diameter mm	Rope diameter* mm	Useable rope length 1 st layer m	Useable rope length max. m	Lift per crank rotation 1 st layer mm	Lift per crank rotation top layer mm	Required crank effort daN	Weight without rope kg
KAL 750	030207004	750	600	100	6	1.3	10	15	17	20	7
KAL 1120	030208000	1120	600	63	7	0.5	10	11	16	22	7

*recommended rope: DIN 3060 SE-znk 1770 sZ-spa

Dimensions model SW-KAL

Model	KAL 750	KAL 1120
Art.-No.	030207004	030208000
A, mm	165	165
B, mm	168	168
C, mm	170	170
Ø D, mm	100	63
E, mm	180	180
F, mm	135	135
G, mm	60	60
H, mm	56	50
J, mm	160	160
Ø K, mm	13	13
L, mm	85	85





Console-mounted rope winch model SW-K LAMBDA (BGVC1)

Capacity 300 kg

The compact rope winch for applications on stages, in studios, theatres, etc.

Features

- State-of-the-art design with galvanized side sections for easy handling.
- Grooved drum for single-layer winding of the steel rope. An 18:1 ratio between drum and rope diameter increases the service life of the rope substantially.
- With spring-loaded rope pressure roller to prevent the unloaded rope from jumping off the drum.
- Gear rated for twice the nominal load.
- Spur gear drive for optimal efficiency and comfortable handling.
- The fitted safety crank with two spring brakes acting independently of each other for safe holding of the load in any position.
- Complies with the latest accident prevention regulations BGV C1 (DIN 56925) as well as the prototype and safety test (GS-test – tested safety) of the German committee for lifting equipment.

Options

- Drum extension for a larger rope capacity.
- Special grooves (several ropes)

Pfaff winches are not designed for passenger elevation applications and must not be used for this purpose.

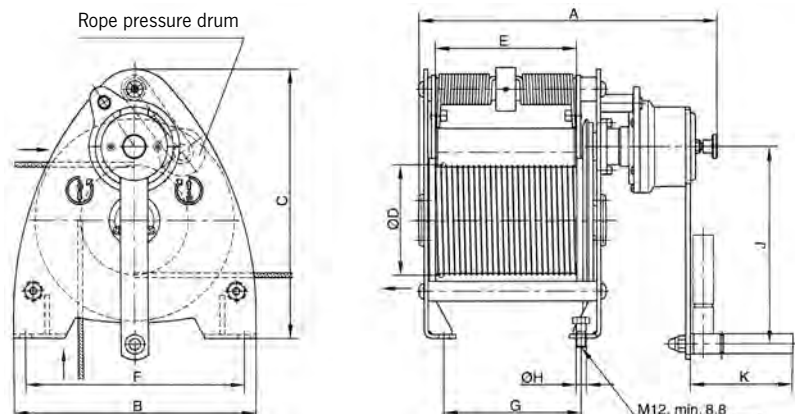
Technical data model Lambda (BGVC1)

Art.-No.	Capacity kg	Rope diameter* mm	Useable rope length 1 st layer mm	Lift per crank rotation mm	Required crank effort daN	Ratio	Weight without rope kg
030272015	300	6	10	50	18	8.83:1	30
030272017	300	6	15	50	18	8.83:1	36

*recommended steel rope: 6 DIN 3069 SE-znk 1960 sZ-spa, (breaking load of the rope min. 30,4 kN)

Dimensions model Lambda (BGVC1)

Art.-No.	030272015	030272017
A, mm	379	469
B, mm	310	310
C, mm	340	340
Ø D, mm	139.4	139.4
E, mm	180	270
F, mm	280	280
G, mm	175	265
Ø H, mm	13	13
J, mm	250	250
K, mm	130	130



Sheave block for rope guidance, equipped with ball bearings model DSRB S

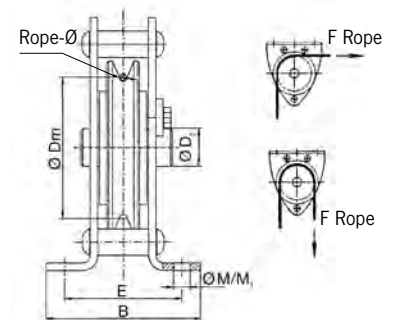
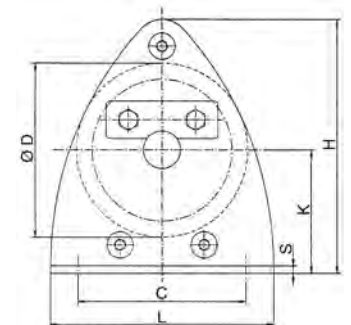
Technical data model DSRB

Model	Art.-No.	Classification FEM/ISO	Pulling force in kg at deflection 90°	Pulling force in kg at deflection 180°	Rope diameter mm
DSRB S 90/4	033447103	2m/M5	700	500	3-4
DSRB S 90/6	033447413	1Dm/M1	700	500	5-6
DSRB S 145/7	033447106	1Am/M4	1100	800	7
DSRB S 185/8	033447107	2m/M5	2300	1630	8
DSRB S 270/12	033447111	2m/M5	2500	1800	9-12
DSRB S 400/16	033447113	3m/M6	5000	3800	13-16
DSRB S 490/20	033447115	3m/M6	8000	6000	20

All sheaves are available as an individual component on request.

Dimensions model DSRB

Model	DSRB S 90/4	DSRB S 90/6	DSRB S 145/7	DSRB S 185/8	DSRB S 270/12	DSRB S 400/16	DSRB S 490/20
Art.-No.	033447103	033447413	033447106	033447107	033447111	033447113	033447115
B, mm	85	85	125	138	191	302	313
C, mm	90	90	160	195	290	430	580
Ø D, mm	90	90	145	185	270	400	490
Ø D1, mm	20	25	25	30	40	50	65
Ø Dm, mm	80	78	126	160	246	368	450
E, mm	62	62	88	106	138	212	220
H, mm	134	134	224	273	407	612	694
K, mm	65	65	110	135	202	310	340
L, mm	120	120	200	245	360	530	650
Ø M/M1, mm	9/9	9/9	11.5/13	13.5/15	18/20	26/30	34/40
S, mm	4	6	6	8	10	15	16



Standard ropes for Pfaff-silberblau manual winches

According to DIN 3060

Article-numbers

Rope diameter	Breaking load of rope min. kN	Useable rope length 5 m	Useable rope length 10 m	Useable rope length 15 m	Useable rope length 20 m	Capacity clevis end kg
4 mm - DIN 3060	10.1	033600405	033600410	033600415	033600420	500
5 mm - DIN 3060	15.8	033600505	033600510	033600515	033600520	1000
6 mm - DIN 3060	22.8	033600605	033600610	033600615	033600620	1000
7 mm - DIN 3060	31.0	033600705	033600710	033600715	033600720	1000
7 mm - DIN 3069*	43.9	-	-	033601715	-	1600

*Rope with increased breaking load for model LB 1200 kg

Additional accessories available on request.



In compliance with accident prevention regulations BGV C1, also available for application on stages and in studios.

Options

- Various drum designs e.g. extended for a larger rope capacity, special rope drums for operation with several ropes.
- Rope pressure rollers to prevent the unloaded rope from jumping off the drum.
- Adjustable gear limit switch for limiting the rope path in both directions.
- Slack rope switch for automatically stopping the winch when the rope tension eases or when the load is set down.
- Frequency inverter for infinitely variable speed control.
- External operation via cable/radio
- Other operating voltages
- Other motor protection
- Absolute or incremental encoder
- Pole-changing motors
- Special preservation

Electric winch model SW-E BETA PROLINE

Capacity 250 - 7000 kg

Electric winches of the BETA PROLINE range are used for lifting, towing and positioning of loads under demanding conditions. All models are based on a modular system; a high degree of flexibility ensures tailor-made solutions owing to a large number of options.

The application of high-quality components and gear motors ensure safety and a long service life.

Features

- The electrically released spring pressure disc brake safely holds the load also in the event of a power failure.
- Powerful three-phase AC drives for multi-range voltage 380 - 420 V, 50 Hz or 440 - 460 V, 60 Hz. Motor type of enclosure IP 55, duty factor 40 % ED.
- Electronic overload protection from 1000 kg lifting load as standard.
- The maintenance-free, oil lubricated gearbox has quiet running characteristics due to milled and ground gears with helical teeth.
- All parts with high-quality two component paint (RAL 5015, coat thickness approx. 120 µm), rope drum zinc-plated in addition.
- Standard rope drum of grooved design, with large rope capacity.
- Variable rope lead-in due to two rope attachment points (left and right).
- Increased operating safety due to 42 V contactor control.
- Complies with accident prevention regulations BGV D 8.

For determining the required rope length, please take into account that at least 2 to 3 windings must remain on the drum!

Technical data model SW-E BETA PROLINE

Art.-No.	Size	Capacity	Capacity	Lifting	Lifting	Rope diameter*	Recom- mended rope tensile strength N/mm ²	Motor	Classifi- cation	Useable	Useable	Weight without rope
		1 st layer	top layer	speed 1 st layer	speed top layer					rope length 1 st layer	rope length top layer	
		kg	kg	m/min	m/min	mm		kW	FEM/ISO	m	m	kg
031148012	1	250	212	9.5	11.2	5	1770	0.42	2m/M5	16.2	77.8	62
031148018	1	250	212	13.8	16.4	5	1770	0.60	2m/M5	16.2	77.8	63
031148024	1	250	212	19.0	23.0	5	1770	0.93	2m/M5	16.2	77.8	64
031148007	1	320	272	6.0	7.1	5	1960	0.32	2m/M5	16.2	77.8	63
031148013	1	320	272	9.6	11.3	5	1960	0.54	2m/M5	16.2	77.8	63
031148019	1	320	272	13.8	16.4	5	1960	0.77	2m/M5	16.2	77.8	64
031148025	1	320	272	21.3	25.8	5	1960	1.19	2m/M5	16.2	77.8	67
031148077	1	500	343	8.5	12.6	6	1960	0.75	1Am/M4	8.4	58.5	64
031148208	2	500	414	10.3	12.5	8	1770	0.91	2m/M5	17.1	85.5	104
031148209	2	630	522	10.3	12.5	8	1770	1.14	2m/M5	17.1	85.5	104
031148219	2	630	522	20.3	24.8	8	1770	2.25	2m/M5	17.1	85.5	111
031148205	2	800	663	4.8	5.7	8	1960	0.67	2m/M5	17.1	85.5	101
031148210	2	800	663	10.3	12.5	8	1960	1.45	2m/M5	17.1	85.5	104
031148220	2	800	663	20.5	25.0	8	1960	2.87	2m/M5	17.1	85.5	114
031148259	2	980	689	7.5	10.7	9	1960	1.28	1Am/M4	11	77.4	104
031148403	3	1250	1066	5.2	6.2	12	1770	1.15	2m/M5	16.3	61.3	165
031148406	3	1250	1066	11.5	13.6	12	1770	2.41	2m/M5	16.3	61.3	174
031148441	3	1600	1100	8.5	12.5	12	1960	2.28	1Am/M4	12.1	87.7	174
031148444	3	1600	1100	11.5	17.0	12	1960	3.50	1Am/M4	12.1	87.7	173
031148504	3.5	2000	1667	7.6	9.6	14	1770	2.66	2m/M5	13.8	53.9	221
031148507	3.5	2000	1667	10.6	12.9	14	1770	3.89	2m/M5	13.8	53.9	234
031148510	3.5	2000	1667	16.3	20.3	14	1770	5.72	2m/M5	13.8	53.9	246
031148505	3.5	2500	2083	7.6	8.9	14	1770	3.35	2m/M5	13.8	53.9	224
031148502	3.5	2500	2083	5.5	6.5	14	1770	2.40	2m/M5	13.8	53.9	221
031148511	3.5	2500	2083	16.3	20.3	14	1770	7.15	2m/M5	13.8	53.9	246
031148530	3.5	3200	2354	4.5	6.1	14	2160	2.52	1Am/M4	11.4	64.5	221
031148536	3.5	3200	2354	8.7	12.0	14	2160	5.10	1Am/M4	11.4	64.5	234
031148620	4	3200	2647	22.1	27.2	18	1770	12.19	2m/M5	15.6	62	503
031148644	4	4000	2664	5.7	8.7	18	1960	4.38	1Am/M4	12.7	98.3	435
031148652	4	4000	2664	11.2	17.2	18	1960	7.85	1Am/M4	12.7	98.3	468
031148802	5	5000	4207	3.9	4.6	20	1960	3.66	2m/M5	20.3	79.2	1047
031148804	5	5000	4207	8.1	9.7	20	1960	7.58	2m/M5	20.3	79.2	1019
031148823	5	6300	4690	3.4	4.3	20	2160	3.72	1Am/M4	16.4	93.4	1047
031148825	5	6300	4690	6.5	8.8	20	2160	7.71	1Am/M4	16.4	93.4	1019
031148840	5	7500	4810	5.3	8.3	20	2160	7.44	1Bm/M3	13.4	104.8	1019
031148842	5	7500	4810	10.4	16.4	20	2160	13.46	1Bm/M3	13.4	104.8	1098

*recommended rope: DIN 3069 SE-znk 1960, non-rotating



! Pfaff winches are not designed for passenger elevation applications and must not be used for this purpose.

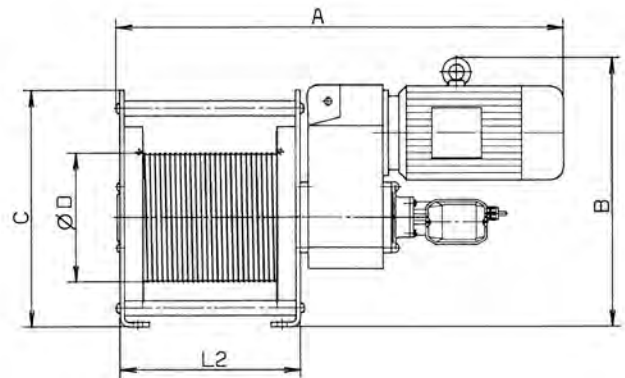
Dimensions model SW-E BETA PROLINE

Art.-No.	031148012	031148018	031148024	03118007	031148013	031148019	031148025	031148077	031148208
A, mm	695	725	725	710	725	725	780	725	907
B, mm	333	343	343	333	343	343	352	343	490
C, mm	325	325	325	325	325	325	325	325	444
D Ø, mm	175	175	175	175	175	175	175	108	242
L2, mm	264	264	264	264	264	264	264	264	338

Art.-No.	031148209	031148219	031148205	031148210	031148220	031148259	031148403	031148406	031148441
A, mm	907	940	852	907	940	907	1014	1065	1065
B, mm	490	490	490	490	490	490	614	614	614
C, mm	444	444	444	444	444	444	547	547	547
D Ø, mm	242	242	242	242	242	175	295	295	218
L2, mm	338	338	338	338	338	338	406	406	406

Art.-No.	031148444	031148504	031148507	031148510	031148505	031148502	031148511	031148530	031148536
A, mm	1037	1091	1147	1258	1091	1091	1258	1091	1147
B, mm	614	684	684	684	684	684	684	684	684
C, mm	547	547	547	547	547	547	547	547	547
D Ø, mm	218	295	295	295	295	295	295	242	242
L2, mm	406	406	406	406	406	406	406	406	406

Art.-No.	031148620	031148644	031148652	031148802	031148804	031148823	031148825	031148840	031148842
A, mm	1408	1265	1374	1549	1549	1549	1549	1549	1617
B, mm	826	826	826	1046	1046	1046	1046	1046	1046
C, mm	687	687	687	844	844	844	844	844	844
D Ø, mm	364	295	295	451	451	364	364	295	295
L2, mm	480	480	480	568	568	568	568	568	568



Pfaff winches are not designed for passenger elevation applications and must not be used for this purpose.

Sheave block for rope guidance, equipped with ball bearings model DSRB S

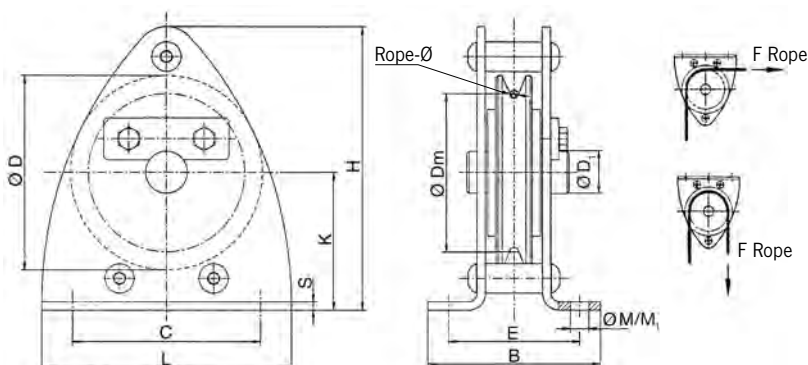
Technical data model DSRB S

Model	Art.-No.	Classification FEM/ISO	Pulling force in kg at deflection 90°	Pulling force in kg at deflection 180°	Rope diameter mm
DSRB S 90/4	033447103	2m/M5	700	500	4
DSRB S 145/5	033447104	4m/M6	1100	800	5
DSRB S 145/6	033447105	2m/M5	1100	800	6
DSRB S 185/8	033447107	2m/M5	2300	1630	8
DSRB S 185/9	033447108	1Am/M4	2300	1630	9
DSRB S 270/12	033447111	2m/M5	2500	1800	12
DSRB S 325/14	033447117	2m/M5	4500	3200	14
DSRB S 400/16	033447113	3m/M6	5000	3800	16
DSRB S 400/18	033447114	2m/M5	5000	3800	18
DSRB S 490/20	033447115	3m/M6	8000	6000	20



Dimensions model DSRB S

Model	DSRB S 90/4	DSRB S 145/5	DSRB S 145/6	DSRB S 185/8	DSRB S 185/9	DSRB S 270/12	DSRB S 325/14	DSRB S 400/16	DSRB S 400/18	DSRB S 490/20
Art.-No.	033447103	033447104	033447105	033447107	033447108	033447111	033447117	033447113	033447114	033447115
B, mm	85	125	125	138	138	191	260	302	302	313
C, mm	90	160	160	195	195	290	350	430	430	580
Ø D, mm	90	145	145	185	185	270	325	400	400	490
Ø D1, mm	20	25	25	30	30	40	50	50	50	65
Ø Dm, mm	80	125	125	160	162	246	297	368	364	450
E, mm	62	88	88	106	106	138	180	212	212	220
H, mm	134	224	224	273	273	407	490	612	612	694
K, mm	65	110	110	135	135	202	242	310	310	340
L, mm	120	200	200	245	245	360	440	530	530	650
Ø M/M1, mm	9/9	11,5/13	11,5/13	13,5/15	13,5/15	18/20	22/25	26/30	26/30	34/40
S, mm	4	6	6	8	8	10	12	15	15	16





For determining the required rope length, please take into account that at least 2 to 3 windings must remain on the drum!

Electric winch model BETA SILVERLINE

Capacity 125 - 3200 kg

Electric winches of the BETA SILVERLINE range are used for lifting, towing and positioning of loads. The proven technology and specified equipment features make the winch the ideal product for standard applications.

Features

- The electrically released spring pressure disc brake safely holds the load also in the event of a power failure.
- Powerful three-phase AC drives for multi-range voltage 380 - 420V, 50 Hz or 440 - 460V, 60 Hz. Motor type of enclosure IP 55, duty factor 40% ED.
- Electronic overload protection from 1000 kg lifting load as standard.
- The maintenance-free, oil lubricated gearbox has quiet running characteristics due to milled and ground gears with helical teeth.
- All parts with high-quality two component paint (RAL 5015, coat thickness approx. 120 µm), rope drum zinc-plated in addition.
- Standard rope drum of grooved design, with large rope capacity.
- Variable rope lead-in due to two rope attachment points (left and right).
- The winches feature either direct or contactor control (incl. gear limit switch).
- Complies with accident prevention regulations BGV D8.

Pfaff winches are not designed for passenger elevation applications and must not be used for this purpose.

Technical data model BETA SILVERLINE

Art.-No. Direct control	Art.-No. Contactor control	Size	Capacity 1 st layer kg	Capacity top layer kg	Lifting speed 1 st layer m/min	Lifting speed top layer m/min	Rope diameter* mm	Motor kW	Classification FEM/ISO	Useable rope length 1 st layer m	Useable rope length top layer m	Weight without rope kg
031140004	-	Mini	125	85	4.7	7.3	4	0.25	1Bm/M3	7	46.7	22
031140000	-	Mini	250	170	2.5	3.9	4	0.25	1Bm/M3	7	46.7	25
031140001	031140006	Mini	250	170	4.7	7.3	4	0.37	1Bm/M3	7	46.7	25
031140005**	031140015**	Mini	250	170	3.7	5.7	4	0.55	1Bm/M3	7	46.7	25
031148065	031149065	Size 1	500	348	3.5	5.5	6	0.37	1Am/M4	8.4	58.5	65
041148077	031149077	Size 1	500	348	8.5	12.6	6	0.75	1Am/M4	8.4	58.5	65
031148129	-	Size 1	630	400	6.8	11.0	6	0.75	1Bm/M3	6.7	48.9	60
031148254	031149254	Size 2	980	697	3.4	4.9	9	0.75	1Am/M4	11	77.5	114
041148259	031149259	Size 2	980	697	7.5	10.8	9	1.1	1Am/M4	11	77.5	120
-	031149302	Size 2	1250	814	5.9	9.2	9	1.1	1Bm/M3	8.7	64.1	125
-	031149438	Size 3	1600	1115	3.9	5.7	12	1.1	1Am/M4	12.1	87.8	204
-	031149441	Size 3	1600	1115	8.5	12.5	12	2.2	1Am/M4	12.1	87.8	210
-	031149533	Size 3.5	3200	2354	6.0	8.3	14	3	1Am/M4	11.4	64.5	224

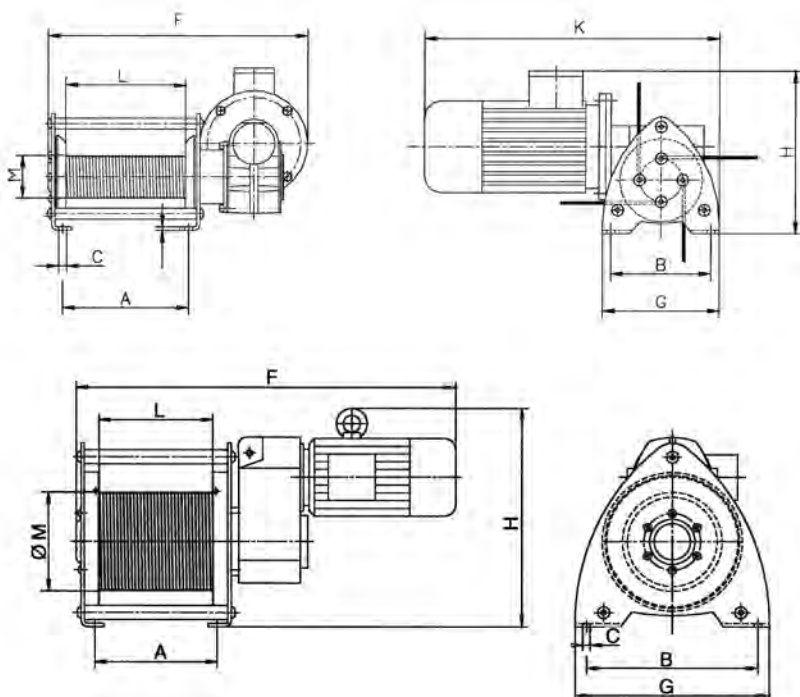
*recommended rope: DIN 3069 FE-znk 1960 sZ-spa

**A.C. motor drive 230V

Dimensions model BETA SILVERLINE

Art.-No. Direct	031140004	031140000	031140001	031140005*	031148065	041148077	031148129	031148254	041148259	-	-	-	-
Art.-No. Contactor	-	-	031140006	031140015*	031149065	031149077	-	031149254	031149259	031149302	031149438	031149441	031149533
A, mm	185	185	185	185	215	215	215	270	270	270	320	320	320
B, mm	170	170	170	170	300	300	300	400	400	400	510	510	510
Ø C, mm	12	12	12	12	13,5	13,5	13,5	18	18	18	22	22	22
F, mm	379	389	389	389	710	746	731	852	912	907	1014	1073	1101
G, mm	200	200	200	200	200	340	200	200	465	200	200	570	200
H, mm	222	241	241	241	333	319	343	490	487	490	614	599	684
K, mm	422	432	432	-	-	-	-	-	-	-	-	-	-
L, mm	180	180	180	180	200	200	200	250	250	250	300	300	300
Ø M, mm	64	64	64	64	108	108	86	175	175	138	218	218	242

*A.C. motor drive 230V



Pfaff winches are not designed for passenger elevation applications and must not be used for this purpose.

Steel jacks acc. to DIN 7355 -with adjustable lifting claw model STW-V

Capacity 3000 - 10000 kg

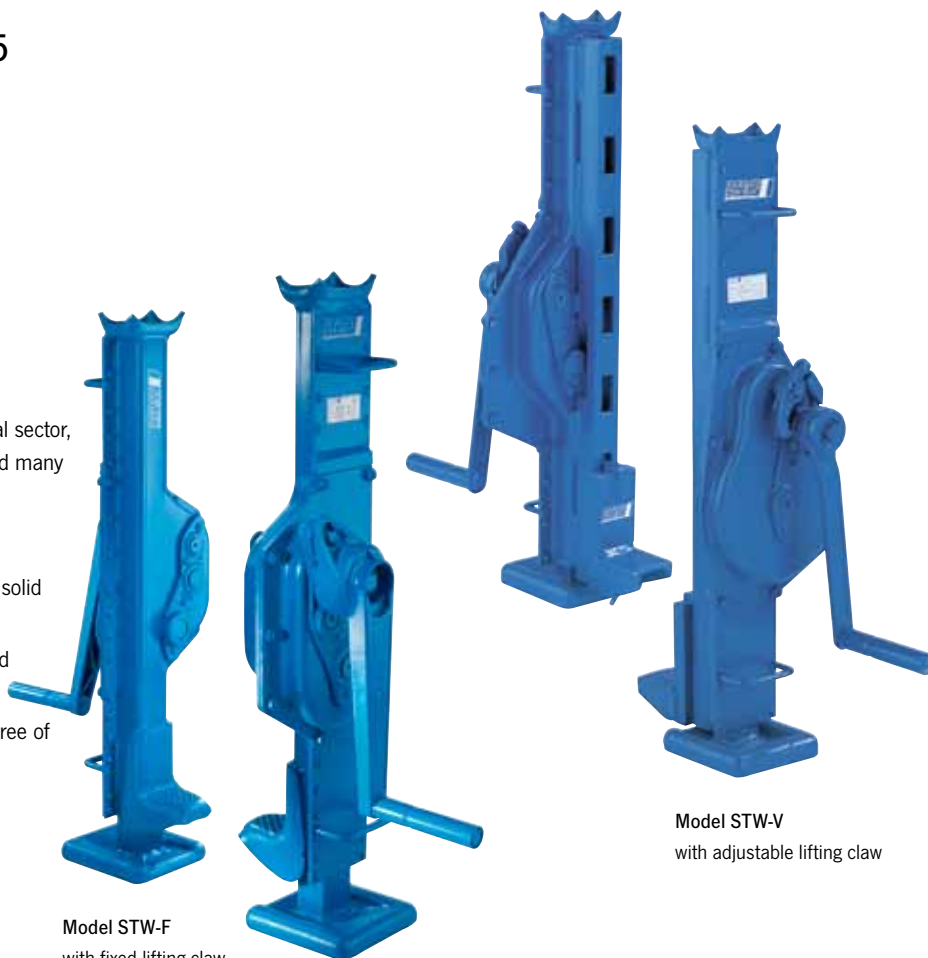
-with fixed lifting claw model STW-F

Capacity 1500 - 10000 kg

Steel jacks are traditional hoisting equipment for universal application in the forest and agricultural sector, in the industrial sector for assembly activities and many other fields of application.

Features

- The robust steel design and a toothed rack of solid material increase the service life of the jack.
- Low wear owing to hardened gearing parts and precisely machined teething.
- The precisely machined gears with a high degree of efficiency guarantees low crank forces.
- The load is supported either on the claw or the head of the steel jack.
- Robust base plate for a high level of stability.

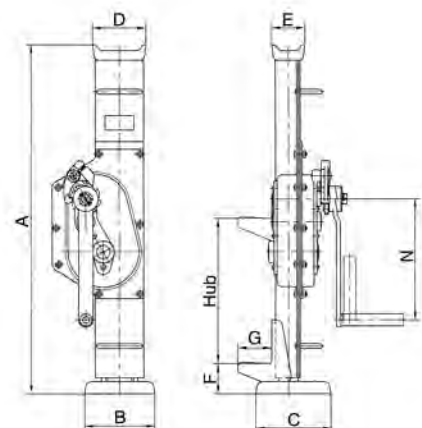


Option

- Different crank versions

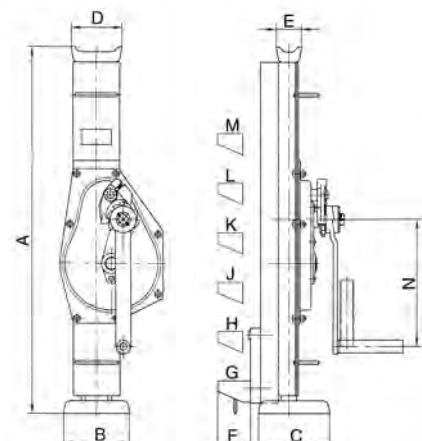
Technical data model STW-V and model STW-F

Art.-No. Sifeku	Art.-No. Siku	Art.-No. Raku	Capacity/Type kg	Height mm	Lift mm	Weight kg
030008133	030008001	030008028	3000/V	720	350	25
030009156	030009008	030009016	5000/V	720	300	30
-	030010006	030010014	10000/V	792	300	48
030001139	030001007	030001015	1500/F	720	350	12
030002135	030002003	030002011	3000/F	720	350	21
030003131	030003069	030003018	5000/F	720	300	26
-	030004006	030004014	10000/F	792	300	42



Dimensions model STW-V and model STW-F

Art.-No. Sifeku	030008133	030009156	-	030001139	030002135	030003131	-
Art.-No. Siku	030008001	030009008	030010006	030001007	030002003	030003069	030004006
Art.-No. Raku	030008028	030009016	030010014	030001015	030002011	030003018	030004014
A, mm	720	720	792	720	720	720	792
B, mm	130	145	145	130	130	145	145
C, mm	140	155	155	140	140	155	155
D, mm	100	110	125	90	90	110	125
E, mm	50	68	80	50	50	68	80
F, mm	65	65	70	60	61	62	85
G, mm	69	62	85	60	65	70	85
H, mm	166	159	191	-	-	-	-
J, mm	263	256	297	-	-	-	-
K, mm	360	353	403	-	-	-	-
L, mm	457	450	509	-	-	-	-
M, mm	554	547	615	-	-	-	-
N, mm	250	250	300	250	250	250	300





Model ZWW
Capacity 250 kg



Model ZWW
Capacity 1000 kg



Model ZWW
Capacity 1500 kg



Model ZWW
Capacity 10000 kg

Wall-mounted rack and pinion jacks model ZWW

Capacity 250 - 10000 kg

Wall-mounted rack and pinion jacks are used for lifting, lowering, pulling and pushing of loads.

Features

- Robust steel design with precisely machined worm and spur gears for smooth and easy manual operation.
- Solid steel rack with additional bore hole for fastening of the load.
- Low wear owing to hardened gearing parts and precisely machined teething.
- Suitable for a lifting load of up to 5000 kg for pushing and pulling loads.
- Rigid wall mounting.

Options

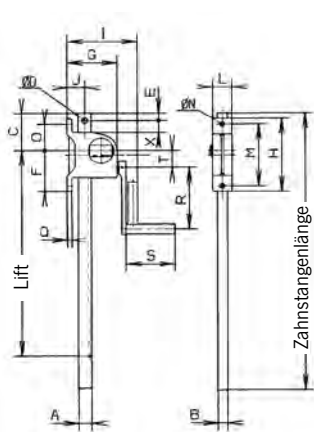
- Rack extensions
- Special fastening arrangements for shaft and rack
- Improved corrosion protection owing to zinc-plating, nickel-plating
- Spring loaded safety lock with removable crank (up to 5000 kg)

Technical data model ZWW

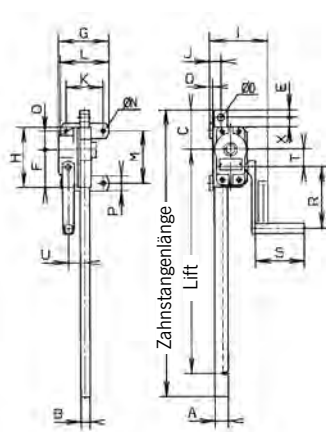
Art.-No.	Gear type	Load safety	Capacity kg	Lift per crank rotation mm	Crank effort daN	Rack length mm	Lift mm	Weight kg
030052000	Worm gear	self-locking	250	11	11	740	550	9
030053007	Worm gear	self-locking	500	11	16.5	895	700	10
030054003	Worm gear	self-locking	1000	3.8	22	765	600	11
030055131	Spur gear	Sifeku	1500	14	28	1090	800	11
030056138	Spur gear	Sifeku	3000	8.6	28	975	565	19
030057134	Spur gear	Sifeku	5000	4.5	28	1170	700	28
030058009	Spur gear	Siku	10000	3.2	40	1240	700	55

Dimensions model ZWW

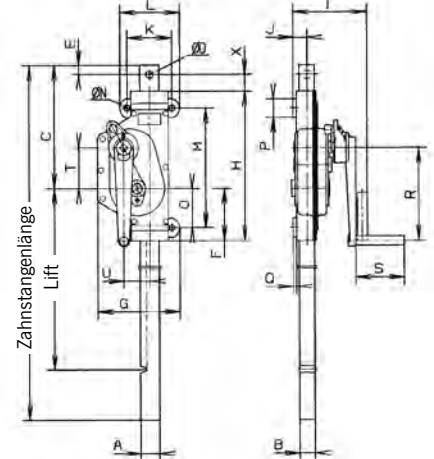
Art.-No.	030052000	030053007	030054003	030055131	030056138	030057134	030058009
A, mm	35	35	35	35	45	50	60
B, mm	25	25	25	25	30	40	50
C, mm	100	100	105	215	280	330	380
D Ø, mm	16	16	21	21	21	21	30
E, mm	20	20	20	20	25	25	30
F, mm	109.5	109.5	100	135	165	140	160
G, mm	133	133	134	151	212	219	269
H, mm	195	195	160	310	395	400	480
I, mm	188	188	155	168	179	197	200
J, mm	47.5	47.5	29.5	26	31	37	39.5
K, mm	-	-	100	100	120	120	140
L, mm	52	52	130	130	160	160	180
M, mm	165	165	140	260	305	320	410
N Ø, mm	12.5	12.5	12.5	12.5	14.5	17	21
O, mm	70.5	70.5	50	110	120	105	125
P, mm	-	-	40	40	50	50	60
Q, mm	12	12	8	8	10	10	10
R, mm	165	220	165	250	250	250	300
S, mm	130	130	130	130	130	130	250
T, mm	44.5	44.5	46.8	42.4	86.25	109.1	150.4
U, mm	-	-	44	43.3	53.1	69.5	88.3
X, mm	32	32	25	20	25	45	30



Model ZWW
Capacity 250 - 500 kg



Model ZWW
Capacity 1000 kg



Model ZWW
Capacity 1500 - 10000 kg

Safety ratchet crank (Raku)

- For use in confined spaces.
- Lifting by moving the ratchet upwards and downwards.
- Lifting or lowering movement adjustable by turning a lever.
- The load is held safely at every height.
- With folding handle

Arm length 250 mm

- Square drive 17 mm
- Max. drive torque 60 Nm (braking torque)

Arm length 300 mm

- Square drive 17 mm
- Max. drive torque 120 Nm (braking torque)



Safety crank (Siku)

- With one-sided braking effect
- The load is held safely at every height.
- With folding handle

Arm length 250 mm

- Square drive 17 mm
- Max. drive torque 60 Nm (braking torque)

Arm length 300 mm

- Square drive 17 mm
- Max. drive torque 120 Nm (braking torque)



Spring loaded safety crank (Sifeku)

For particularly safe application

- Without pawl
- Silent
- Recoil proof
- Maintenance-free
- Totally enclosed
- Weather and temperature resistant
- Braking effect at both ends
- The load is held safely at every height, in the pushing and pulling direction.
- Approved by the TÜV as an independent crank
- With folding handle

Arm length 250 mm

- Square drive 17 mm
- Max. drive torque 60 Nm (braking torque)



Also Available



Other Motion Tech Products



Precision in the Extreme



Kinavo



Distributors for Australia & New Zealand

MOTION TECHNOLOGIES PTY LTD

24/22-30 Northumberland Road
Caringbah NSW 2229 Australia
Phone: (02) 9524 4782
Fax: (02) 9525 3878

sales@motiontech.com.au
www.motiontech.com.au

© 19/09/19