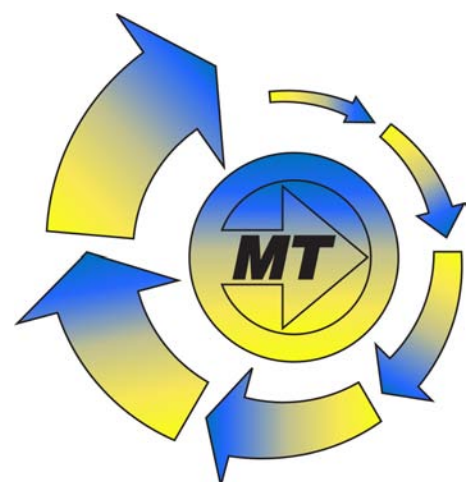


# JTA

## Aluminum Alloy Bevel Gearbox

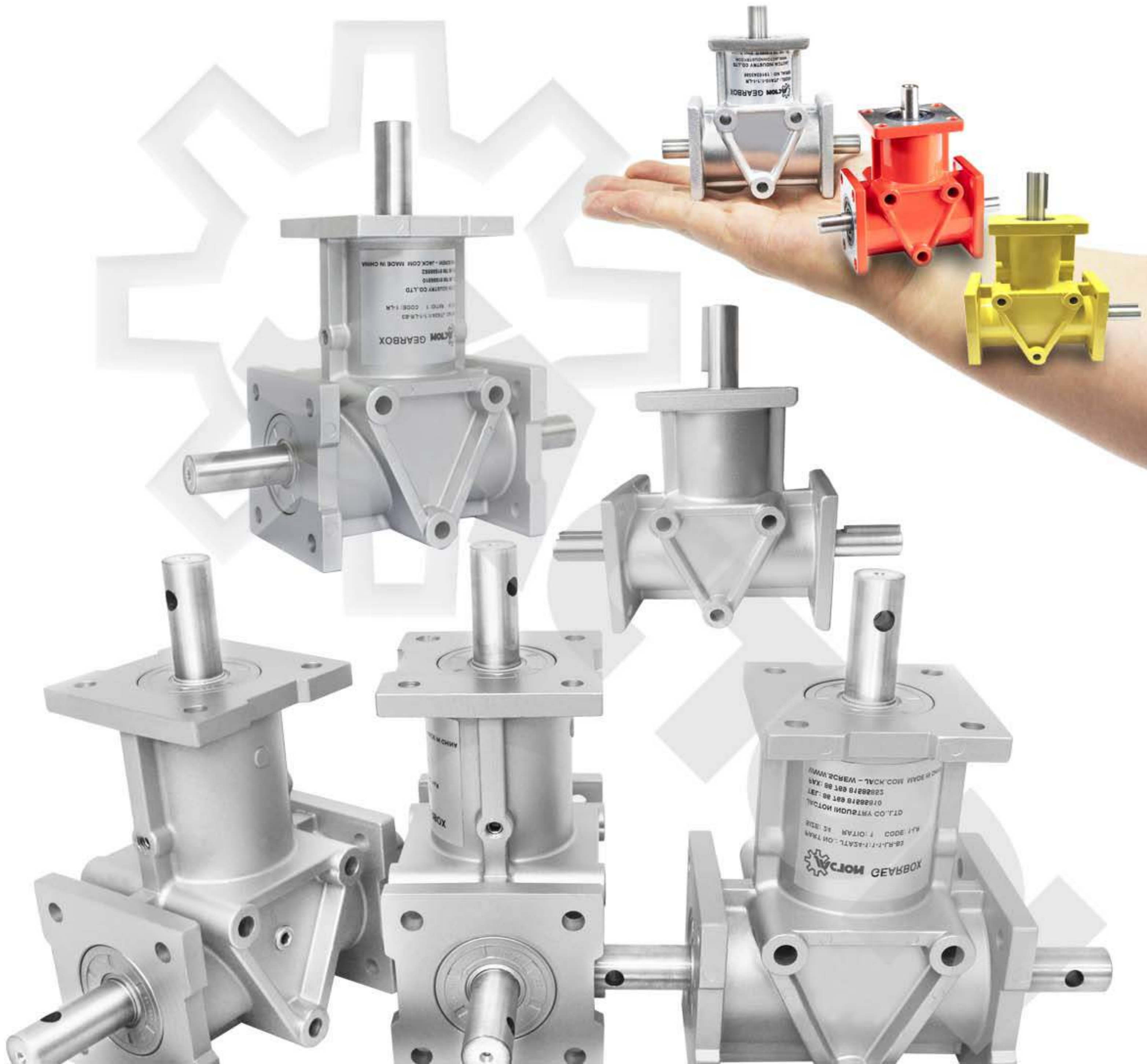
### Contents

Product Description .....	001
Sample Part Number .....	001
Dimensions .....	002



[www.motiontech.com.au](http://www.motiontech.com.au)

2D/3D  
CAD





## Product Description

**JACTON JTA Series Aluminum Alloy Bevel Gearbox** is a small-sized, ultra-lightweight type of our miter gear box. These units are lubricated for life to assure trouble free service. High-performance spiral bevel gear is used to enable silent and high transmission operations. Universal mounting type that can be mounted in any direction. 1:1 and 2:1 ratios, with two or three shafts orientations. 4 sizes are available to suit your needs in a compact, maintenance free, ready to use package.

### ● Features:

- \* Compact design, Small sizes, Ultra light weight.
- \* Gears ratios of 1:1, 2:1 are actual ones.
- \* Power range from 0.02kw to 4.94kw, Torque range from 2Nm to 40Nm.
- \* Gear transmission average efficiency up to 94%.
- \* 2-shafts and 3-shafts Configurations. Allows both horizontal and vertical shafts.
- \* High efficiency, low backlash, noiseless operation, low running temperature and long service life.

### ● Structures and Materials:

- \* Spiral bevel gears: High purity rugged alloy steel 20CrMnTiH, carburizing and quenching, case hardened and lapped in pairs for intersecting shafts, low noise with grinded spiral teeth, high torque with milled teeth, high rigidity and wear resistance.
- \* Housings(Gearboxes): Aluminum alloy.
- \* Input and output shafts: Hardened and tempered alloy steel material, hanging heavy load capacity With key and key way. Custom corrosion resistant stainless steel shafts, or other corrosion resistance painting shafts, spline shaft, shaft without key and key way.
- \* Bearings: Heavy duty tapered roller bearing. Custom reinforced bearings for higher radial and axial load. Custom corrosion resistant stainless steel bearings.

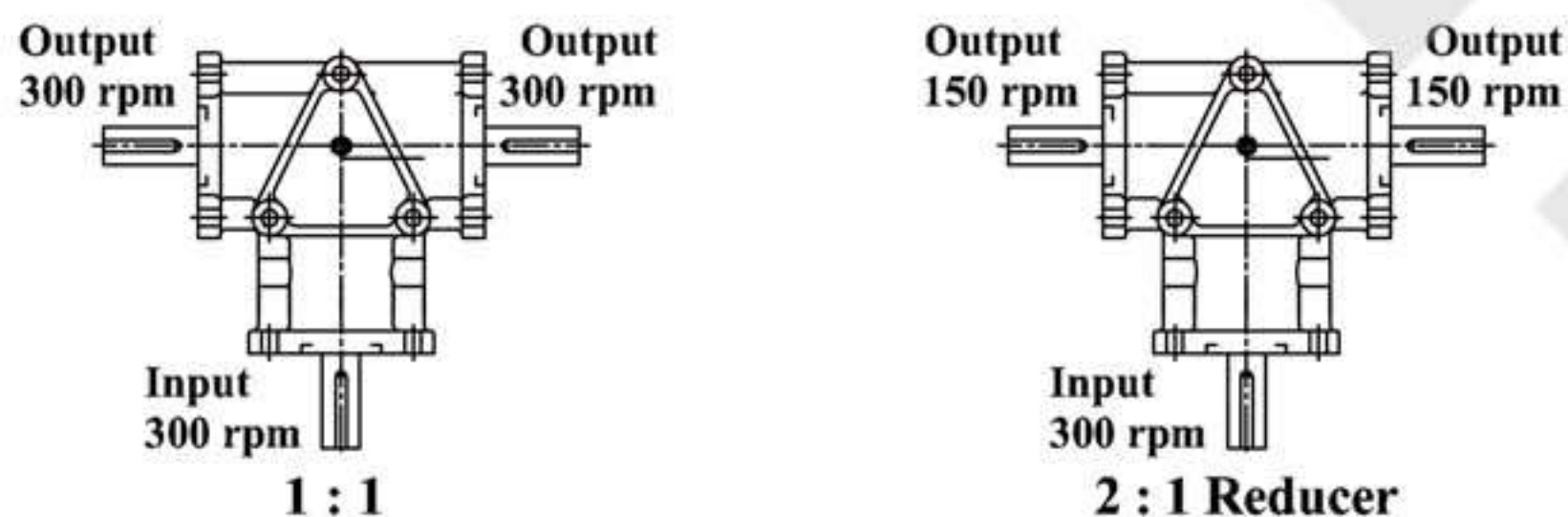
## Sample Part Number

Sample Part Number: JTA10 - 1:1 - 100R - 100R - 1-LR - B3  
 (1) (2) (3) (4) (5) (6)

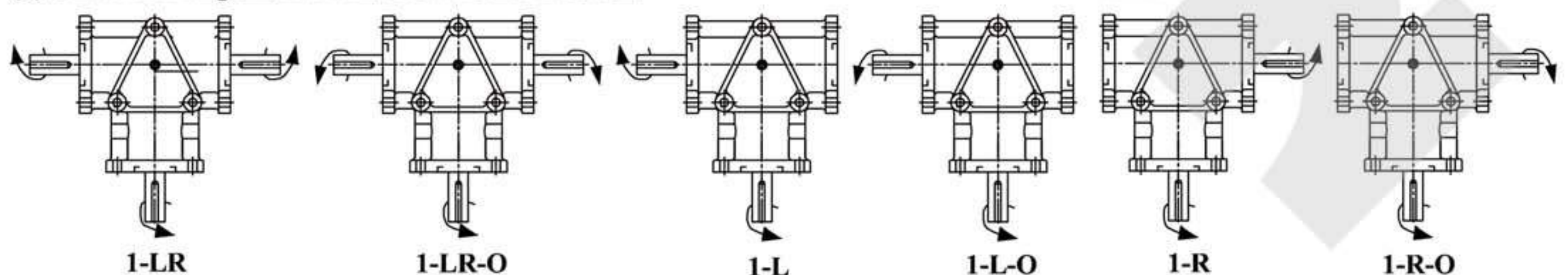
### (1) Model & (2) Gear Ratios

Model	JTA10	JTA15	JTA20	JTA24
Drive Shafts Dia. (mm)	10	15	20	24
Gear Ratios	1:1	1:1 2:1	1:1 2:1	1:1 2:1
Max. Torque (N.m)	3.72	7.15	17.74	46.8
Max. Power (kW)	0.31	1.11	1.92	4.94

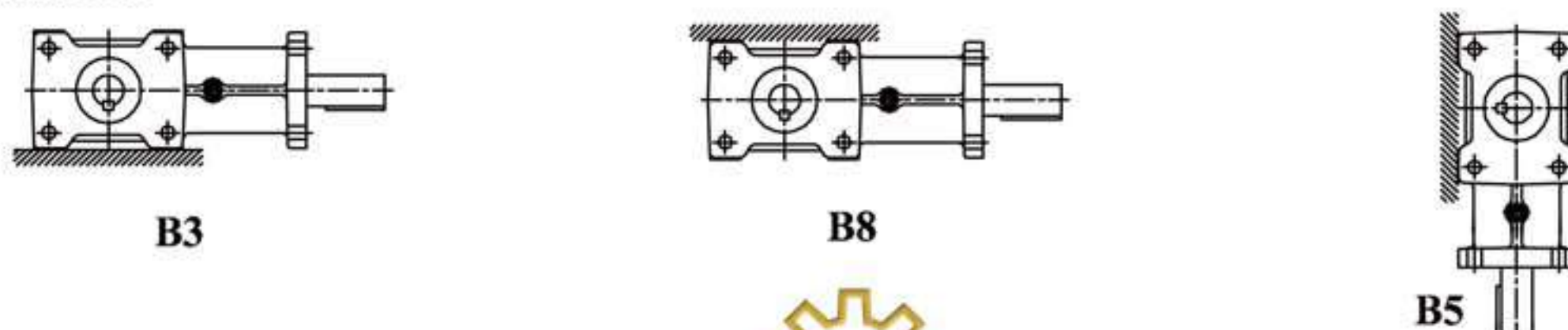
### (3) Input Speed & (4) Output Speed, Below is Sample



### (5) Shaft Arrangements And Rotation Directions



### (6) Mounting Positions

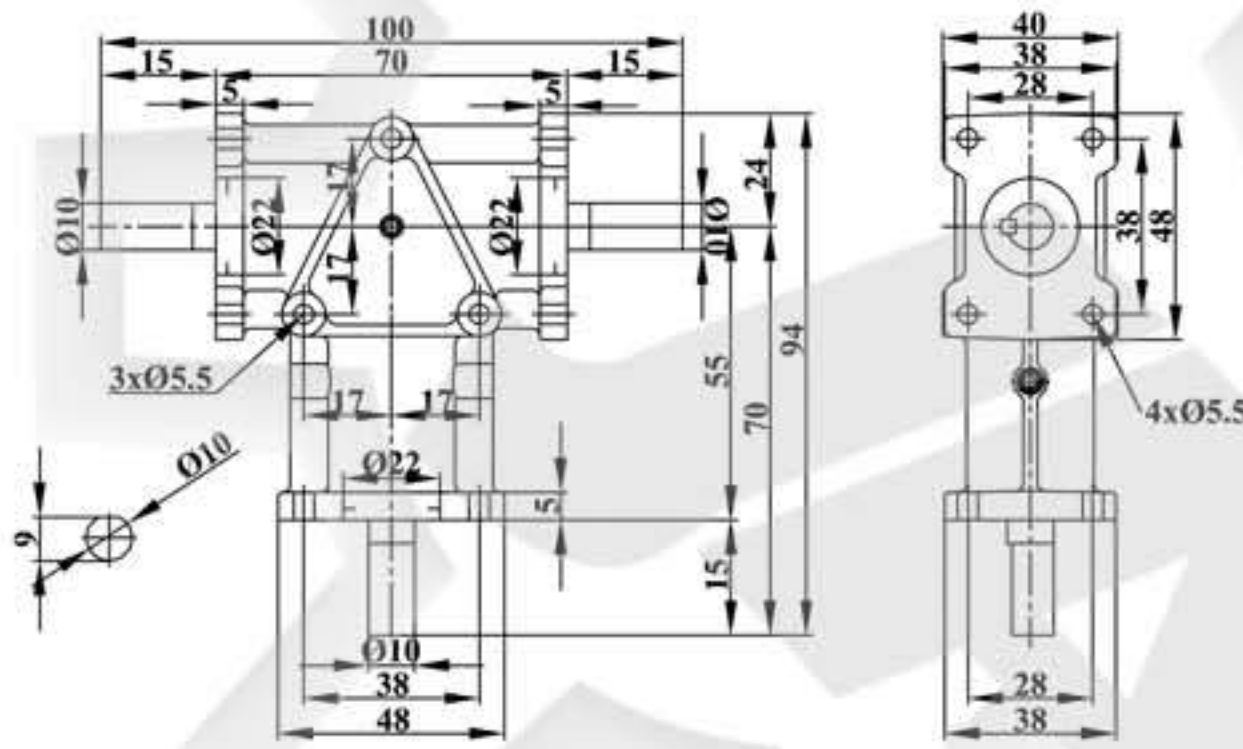




**Dimensions**

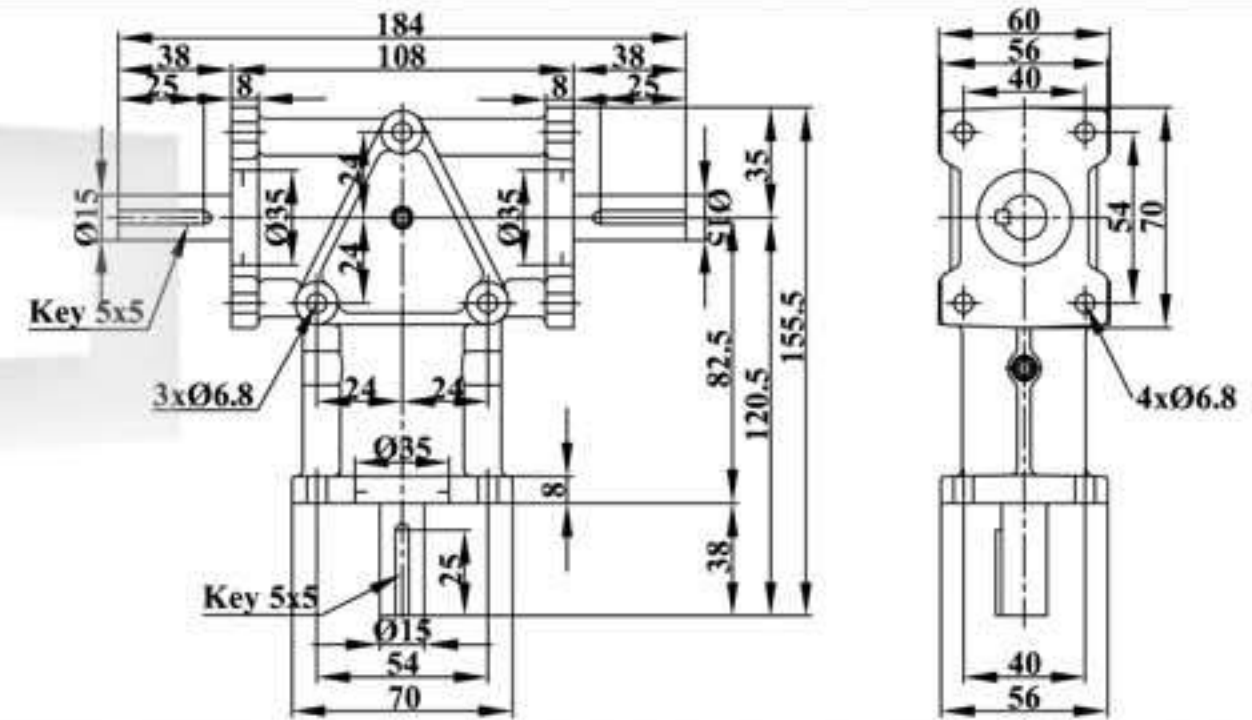
**JTA10**

Net Weight (Kg)	0.45									
Input Speed (rpm)	1450	1150	870	580	400	300	200	150	100	50
Gear Ratio	1 : 1									
Output Speed (rpm)	1450	1150	870	580	400	300	200	150	100	50
Torque (N.m)	1.96	2.25	2.55	2.94	3.23	3.72	3.72	3.72	3.72	3.72
Power (Kw)	0.31	0.28	0.24	0.18	0.14	0.12	0.08	0.06	0.04	0.02



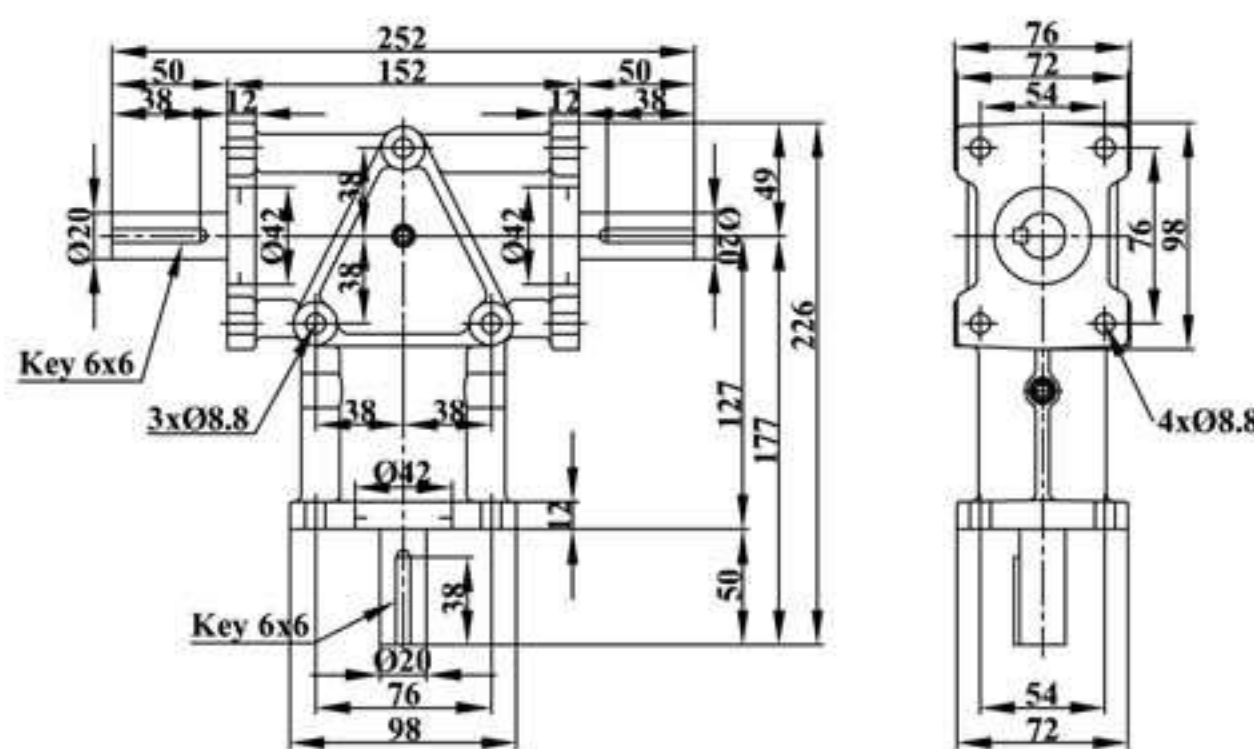
**JTA15**

Net Weight (Kg)	1.5									
Input Speed (rpm)	1450	1150	870	580	400	300	200	150	100	50
Gear Ratio	1 : 1									
Output Speed (rpm)	1450	1150	870	580	400	300	200	150	100	50
Torque (N.m)	7.15	7.15	7.15	7.15	7.15	7.15	7.15	7.15	7.15	7.15
Power (Kw)	1.11	0.88	0.66	0.44	0.3	0.23	0.15	0.11	0.08	0.04
Gear Ratio	2 : 1									
Output Speed (rpm)	725	575	435	290	200	150	100	75	50	25
Torque (N.m)	6.95	6.95	6.95	6.95	6.95	6.95	6.95	6.95	6.95	6.95
Power (Kw)	0.55	0.43	0.33	0.22	0.15	0.11	0.075	0.056	0.038	0.018



**JTA20**

Net Weight (Kg)	3.5									
Input Speed (rpm)	1450	1150	870	580	400	300	200	150	100	50
Gear Ratio	1 : 1									
Output Speed (rpm)	1450	1150	870	580	400	300	200	150	100	50
Torque (N.m)	12.25	14.01	15.78	17.74	17.74	17.74	17.74	17.74	17.74	17.74
Power (Kw)	1.92	1.73	1.47	1.1	0.76	0.57	0.38	0.28	0.19	0.095
Gear Ratio	2 : 1									
Output Speed (rpm)	725	575	435	290	200	150	100	75	50	25
Torque (N.m)	11.96	11.96	11.96	11.96	11.96	11.96	11.96	11.96	11.96	11.96
Power (Kw)	0.94	0.74	0.56	0.37	0.26	0.19	0.13	0.1	0.064	0.032



**JTA24**

Net Weight (Kg)	5.5									
Input Speed (rpm)	1450	1150	870	580	400	300	200	150	100	50
Gear Ratio	1 : 1									
Output Speed (rpm)	1450	1150	870	580	400	300	200	150	100	50
Torque (N.m)	31.9	34.1	37.2	39.5	40.2	40.5	41.2	41.8	41.9	43.2
Power (Kw)	4.94	4.19	3.46	2.45	1.72	1.30	0.88	0.67	0.448	0.231
Gear Ratio	2 : 1									
Output Speed (rpm)	725	575	435	290	200	150	100	75	50	25
Torque (N.m)	42.8	43.4	43.8	44.4	45.1	45.5	46.1	46.4	46.6	46.8
Power (Kw)	3.32	2.67	2.4	1.38	0.964	0.729	0.492	0.372	0.249	0.125

