

Jupiter Servo Drives (JMD-STD-PDS)

Supply range : 17A(34A) to 90A(180A) for 230Vac version
8.5A(17A) to 57A(114A) for 400Vac version



- Designed with leading Dual 32 bit DSP chip and manufactured by adopting high quality component
- High bandwidth and Full digital regulation.
- Fast response and high precision
- Excellent Performance and Features
- Multi-Functionality
- Advanced Operation Software and Monitor Tool
- Wide range from rated current 06A to ultimate 100A.



www.motiontech.com.au

Jupiter Servo Drives (JMD-STD-PDS)

Specifications

Power Input		Three-Phase 230V & 400V AC, 50/60Hz
Power output		Three-Phase 0 ~ Input Power Voltage
Sinusoidal PWM		IGBT Sinusoidal Pulse-Width-Modulation (10Khz)
Encoder type		Incremental
Control mode		Torque, Speed, Position control modes & Embedded Motion Profiles
Modes :	P-command Mode	1. Pulse input : A/B phase, CW/CCW or Clock/Direction 2. Bit rate : ~ 1M bps 3. Gear ratio : 50000 ~ 1/50000
	SP2P mode	1. 16 independent position/Length 2. 4 selectable velocity profile 3. Mixed Absolute/Incremental mode 4. Metric number setting 5. Multi-mode Home-Search
	Speed Control mode	1. Control Range 30000 : 1 2. 8 Preset Speed, by 3-bits DIX 3. 4 Torque Limit setting, by 2-bits DIX
	Torque Control mode	Settable Speed Droop range
Protection		Over-Potential, Over-Current, Over-Load, Over-Speed, Encoder-Fault
Encoder Simulated Output		1/N (N=1,2,4,8,16,32), or Fixed Frequency : 250K, 125K, 62.5K
Control Power		External +24V DC power supply
Digital Input DI (x)		8 Standard bi-directional photo-isolated inputs (DI1 ~ D18) 2 Fast Digital Inputs X/Y Clock input Mark & Cut Capture inputs
Digital Outputs DO (x)		Bi-directional Photo-isolated outputs (DO1 ~ DO4)
Analog Input		12bits resolution A/D inputs : AI1 & AI2 2.5Khz sampling rate
Analog Output		12bits resolution D/A outputs : AO1 & AO2 2.5Khz refreshing rate
Communication		RS-232, RS-485, Modbus (~ 115200bps), CAN Open (Option)
Environment	Temperature	0 ~ 50°C
	Humidity	~ 85% RH
	Vibration	~ 0.5G
Ventilation		Forced cooling

Jupiter Servo Drives (JMD-STD-PDS)

Model Number

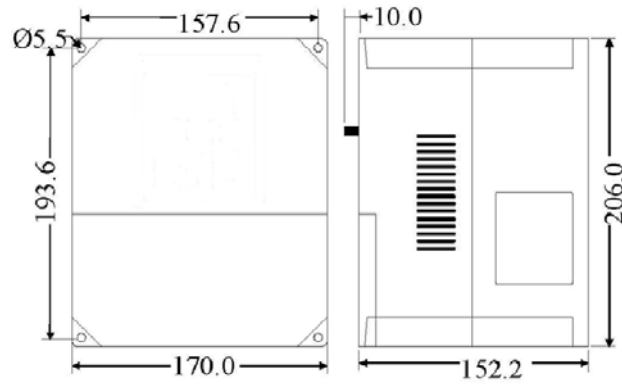
Model No.	Power Supply	Rated Output Current	Peak Output Current
JMD-STD-2037D	Three Phase 230V	17A	34A
JMD-STD-2055D	Three Phase 230V	24A	48A
JMD-STD-2075D	Three Phase 230V	33A	66A
JMD-STD-2110D	Three Phase 230V	46A	92A
JMD-STD-2150D	Three Phase 230V	61A	122A
JMD-STD-2225D	Three Phase 230V	90A	180A
JMD-STD-4022D	Three Phase 400V	5.5A	11A
JMD-STD-4037D	Three Phase 400V	8.5A	17A
JMD-STD-4055D	Three Phase 400V	12A	24A
JMD-STD-4075D	Three Phase 400V	17A	34A
JMD-STD-4110D	Three Phase 400V	23A	46A
JMD-STD-4150D	Three Phase 400V	31A	62A
JMD-STD-4225D	Three Phase 400V	45A	90A
JMD-STD-4300D	Three Phase 400V	57A	114A

Main Features

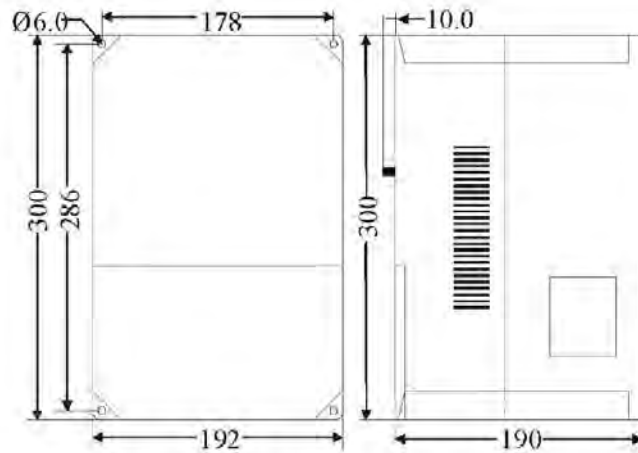
- ⊙ Dual 32bit DSP design, Embedded Motion controller with Servo Drive
- ⊙ Multi-Functionality : Torque mode, Speed mode, Position mode, Smart Point to Point
- ⊙ 100us sampling rate & calculation loop
- ⊙ 1 Mbit/sec, High speed pulse command input (A/B phase, CW/CCW, CK/DIR)
- ⊙ 2 fast digital inputs for High-Speed signal capture
- ⊙ 8 multi-functional bi-directional digital inputs
- ⊙ Simulation encoder output (N=1, 1/2, 1/4,, 1/64), or fixed frequency output 250K, 125K and 62.5K
- ⊙ 4 multi-functional digital outputs (both PNP/NPN compatible)
- ⊙ Analog input 2 channels, 12bit resolution
- ⊙ Analog output 2 channels, 12bit resolution
- ⊙ RS485/RS232, Modbus RTU protocol, 9600 ~ 115200bps, CAN Open (OPTIONAL)
- ⊙ Direct Metric number conversion system, high resolution setting 0 ~ 1,000,000.000(mm)
- ⊙ SP2P (Smart Point to Point) mode, 16 Length/Position data selectable
- ⊙ All sinusoidal acceleration and deceleration velocity profile
- ⊙ Special E-CAM Switch, Shift-Register, and auxiliary Timer, Counter
- ⊙ Advanced Commissioning/Monitoring software : What you see, what you get !
- ⊙ Optional Function : Rotary Cut; Flying Cut; Print mark registration

Jupiter Servo Drives (JMD-STD-PDS)

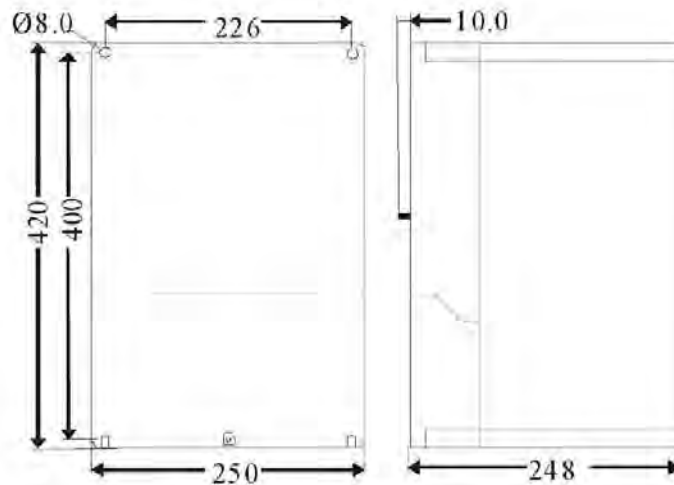
Mechanical Dimension Size



JMD-STD-2022D,2037D,4022D,4037D



JMD-STD-2055D,2075D,4055D,4075D

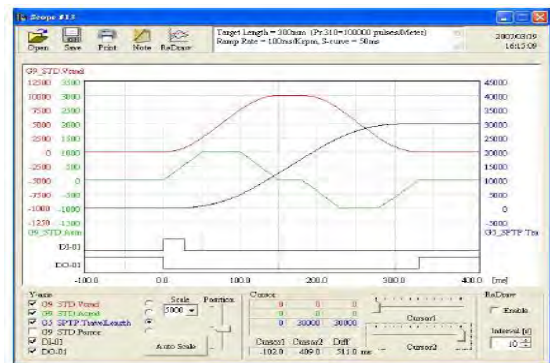
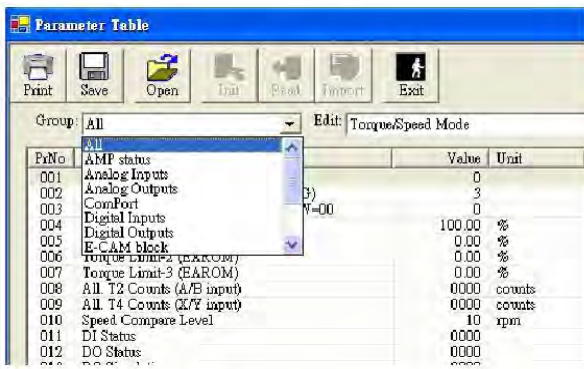


JMD-STD-2110D,2150D,2225D,4110D,4150D,4225D

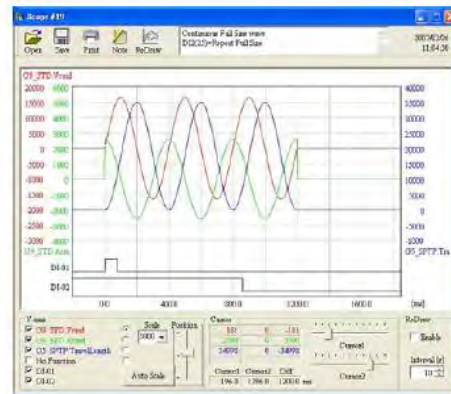
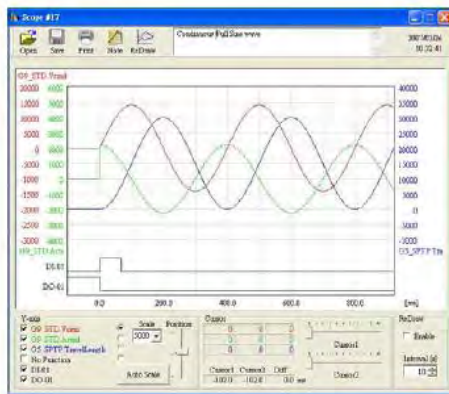
Jupiter Servo Drives (JMD-STD-PDS)

Operation Software

- Friendly "Servo Win" commissioning software is capable for easy read/write parameters, monitoring system and may keep the application project in file.
- Standard S-Curved trapezoidal motion Profile provide smooth Auto point to point Motion control.



- Auxiliary Soft-Scope Tool enable user to Observe system performance



Distributors for Australia & New Zealand MOTION TECHNOLOGIES PTY LIMITED

24/22-30 Northumberland Road
Caringbah NSW 2229 Australia
Phone: (02) 9524 4782

sales@motiontech.com.au
www.motiontech.com.au