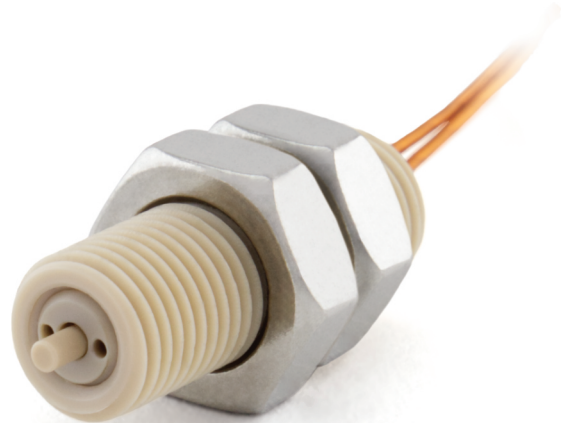


VLS1 UHV Compatible Limit Switch

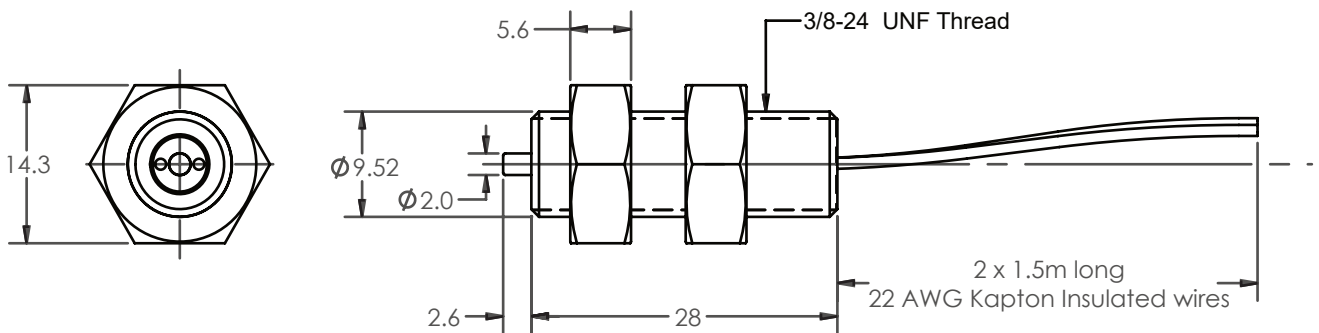
Ultra High Vacuum Compatible Limit Switch

The VLS1 limit switch is used for repeatable limit detection for in-vacuum motion systems. The switch is normally-closed (NC) and can be connected directly to an SMD3 or SMD4 stepper motor drive.

- UHV-compatible material construction
- Suitable for use to 1.3×10^{-10} mBar (1×10^{-10} Torr)
- Repeatability: $\pm <1\mu\text{m}$
- Overtravel: 2 mm
- Minimum actuation force: 0.55 N
- Switching current: 50 mA
- Switching voltage: 30 Vdc
- High temperature - bakeable to 250 °C
- Minimum temperature: -65 °C
- Mass (not including nuts): 15 g
- 22 AWG polyimide insulated wires
- 3/8-24 UNF external thread with 2 matching nuts



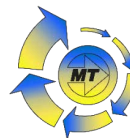
DIMENSIONS



ORDERING INFORMATION

Order Code	
VLS1	UHV Compatible Limit Switch

Related Products	
VSM17-X-xxx	Translation Stage, 5 μm (xxx = travel in mm)
VSM17-Z-xxx	Vertical Translation Stage, 1 μm (xxx = travel in mm)
VSM17-R-xxx	Rotation Stage (xxx steps per full rotation)
VSM17-G-xxx	Goniometer Stage (xxx mm to rotation centre)



Distributors for Australia & New Zealand
MOTION TECHNOLOGIES PTY LIMITED



24/22-30 Northumberland Road
Caringbah NSW 2229 Australia
Phone: (02) 9524 4782

sales@motiontech.com.au
www.motiontech.com.au

28/11/2025

AML pursues a policy of continuous improvement and reserves the right to make detail changes to specifications without consultation. E and OE.